

# Installation Instructions

## 1802225 Adjustable Tri-Ball Hitch

### Ball Capacities:

1-7/8"	6,000 lbs.
2"	7,500 lbs.
2-5/16"	10,000 lbs.

### Bill of Materials

ITEM NO.	PART NO.	QTY.	DESCRIPTION
1	3001724	1	Support Assembly, Adjustable Tri-Ball
2	3001727	1	Mount Weldment, Adjustable Tri-Ball
3	3020620	1	Hitch, Adjustable Chrome Tri-Ball
	HP6253WC	1	Pin, 5/8" Hitch w/Cotter
4		1	Pin, 5/8" Hitch
5		1	Cotter, Hairpin
	3001949	1	Hardware Kit, Adjustable Tri-Ball
6	3001919	3	Pin, Ring 5/8" x 3-1/8"
7	3001953	1	Pin, Assembly 1/4" Snapper
8	FCS050013100	1	Screw, HHC 1/2-13 x 1 Gr. 5 Zn.

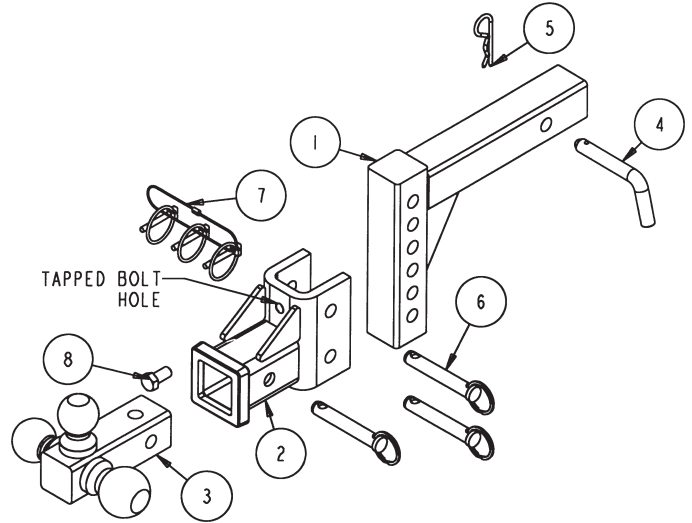
### Assembly

**1.** Insert the solid, L-shaped support assembly (item 1) into your 2" x 2" receiver hitch, and secure with the 5/8" hitch pin and hairpin cotter supplied (items 4 & 5). The short leg of the "L" can be oriented in the upward or downward position to achieve desired hitch height.

**2.** Assemble Tri-Ball Mount (item 2) to the support assembly using two 5/8" ring pins (item 6) and two 1/4" snapper pins (item 7). The Tri-Ball Mount can be mounted with the bolt hole on top or bottom to achieve desired hitch height.

**3.** Assemble Adjustable Tri-Ball Hitch (item 3) into the 2" x 2" tube on the Tri-Ball Mount, with the desired ball size on top. Secure with a 5/8" ring pin (item 6) and a 1/4" snapper pin (item 7).

**4.** Once the desired height is achieved, insert the 1/2" bolt (item 8) into the tapped hole in the Tri-Ball Mount. Tighten bolt to remove any slack between the Tri-Ball support and mount.



**WARNING:** Do not exceed the rating of the lowest-rated component in your towing package.

**WARNING:** Maintain adequate vertical (tongue) load to properly control the trailer (generally 10%), but do not exceed the above-rated capacities.

**Inspect hitch before each use.** Replace any worn or damaged parts. Always use safety chains when towing.