

# Installation Instructions

## 1801000 Class 2, Multifit Trailer Hitch

### Capacity

#### Weight Carrying

Gross Load: 3500 lbs.

Tongue Load: 350 lbs.

- Fits most Full-size SUV's, Vans and Trucks
- Telescoping Assembly
- 1-1/4" Square Receiver
- Corrosion Resistant Black Powder Coat Finish
- Easy to Install – Fits Many Pre-existing Holes Where Available
- Includes Grade 8 Hardware for Mounting to Frame
- Ball not included

### Contents

- Center Section
- DS Mounting Bracket
- PS Mounting Bracket
- (6) 1/2" x 1-1/2" Bolts
- (6) 1/2" Flat Washers
- (8) 1/2" Lock Washers
- (8) 1/2" Nuts
- (2) 1/2" x 3 1/2" Bolts
- Wire
- Spring

### Tools needed for assembly

- Drill
- 9/16" Drill Bit
- 3/4" Open Box-end Wrench
- 3/4" Socket
- Torque Wrench
- Marking Device (to transfer holes)

### Measure The Width Of The Frame

(as shown in figure 1.)

1. Use this measurement to determine which holes to

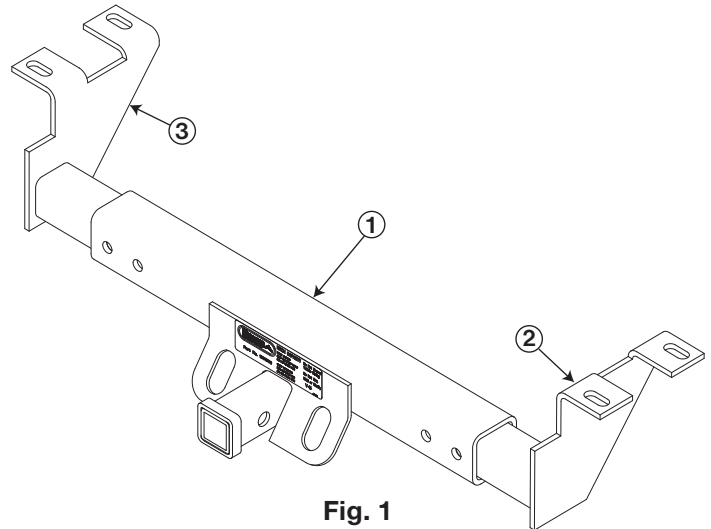


Fig. 1

set the frame mounting brackets to.

- i) For 31"-33 1/2" frame use holes 1 and 4.
- ii) For 35" frame use holes 2 and 4.
- iii) For 37 1/2" frame use holes 1 and 3.
- iv) For 39" frame use holes 1 and 3.
- v) For 41" frame use holes 2 and 3.

### Assembly Instructions

**1.** Remove items 1, 2, 3 from box and rearrange as shown in fig. 1 -- Hitch cannot be installed or used as packaged.

**2.** To fit hitch to your vehicle's frame, see listing on page 2 for appropriate hole pattern diagrams (A), (B), (C), (D), (E), (F). If not indicated, use best set of holes that allows left & right ear to be as close as possible to frame.

**3.** Bolt item 1 & item 2 to item 3, using 1/2" x 3 1/2" bolts, lock washers and nuts as shown in fig. 2. Tighten to 125 ft. lbs.

**4.** Hold hitch up to frame & bolt using 1/2" x 1 1/2" bolts, flat washers, lock washers and 1/2" nuts as shown in fig. 5. Tighten to 125 ft. lbs.

*Note: Drilling may be required on some vehicles. Hold hitch up to frame, mark and drill using 9/16" drill bit.*

## Determining Proper Frame Mounting Holes for Application (Reference Fig. 3)

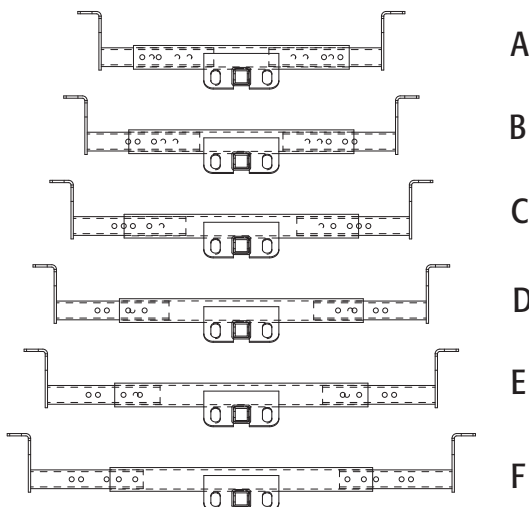
1. Use the following chart to find your vehicle and determine which holes to use to mount the hitch to the truck's frame.

### Mounting Holes for 1801000

MAKE OF VEHICLE	DIAGRAM
<b>Chevrolet</b>	
S-10 Blazer	D
Full-size Trucks	B
Suburban	C
Full-size Vans	B
Astro Van	F
<b>Dodge</b>	
Caravan	D
Dakota	E
Ram Charger	C
<b>Ford</b>	
Bronco	C
Full-size Trucks	C
Ranger, 8' bed	A
Full-size Vans	E
<b>Toyota</b>	
Full-size Trucks, 8' bed	E
<b>Nissan</b>	
Full-size Trucks, 8' bed	E

FIGURE 3

DIAGRAM



When bolting together, the inside face of the center section tube and the outside face of the frame mounting brackets must be drawn together so that they contact each other. This metal to metal contact is necessary for the hitch to function as rated.

### C. Mount The Hitch To The Frame

1. Hold the hitch to the frame to obtain the proper location for drilling the mounting holes. (It may be helpful to clamp the hitch in position to help mark the hole locations for drilling)

- Some frames have one or two existing holes to help locate the hitch. If available, use these holes to help line up the hitch.
- On some vehicles, mostly Ford, the frame may have a rivet interfering with the installation. If this is the case, remove the rivet. You may reuse that hole to bolt the hitch to the frame.
- For Chevy and GMC full-size vans (not mini-vans), remove the bumper bracket before installing the hitch.
- For Chevy and GMC minivans, place the frame mounting brackets between the bumper bracket and the frame.
- On some models the spare tire and/or spare tire bracket must be removed before mounting the hitch.

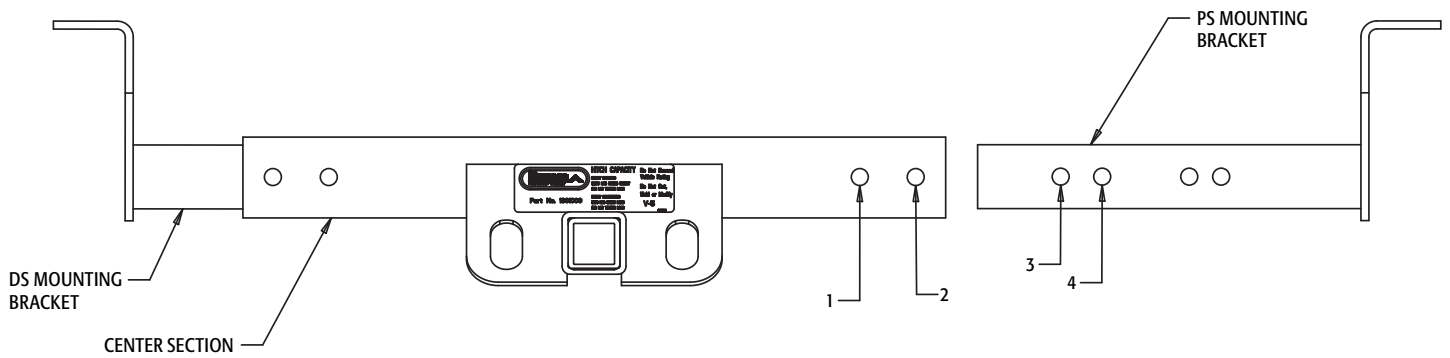
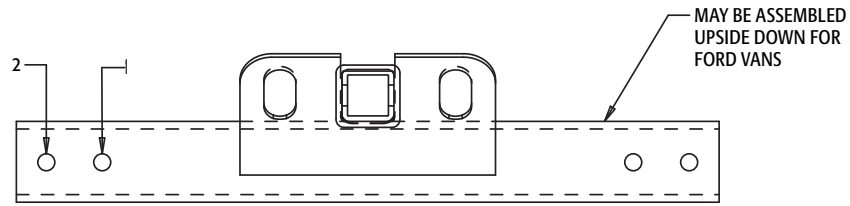
2. Transfer hole locations and drill necessary holes.

3. Bolt hitch to the frame as shown in Figures 5, 6 and 7.

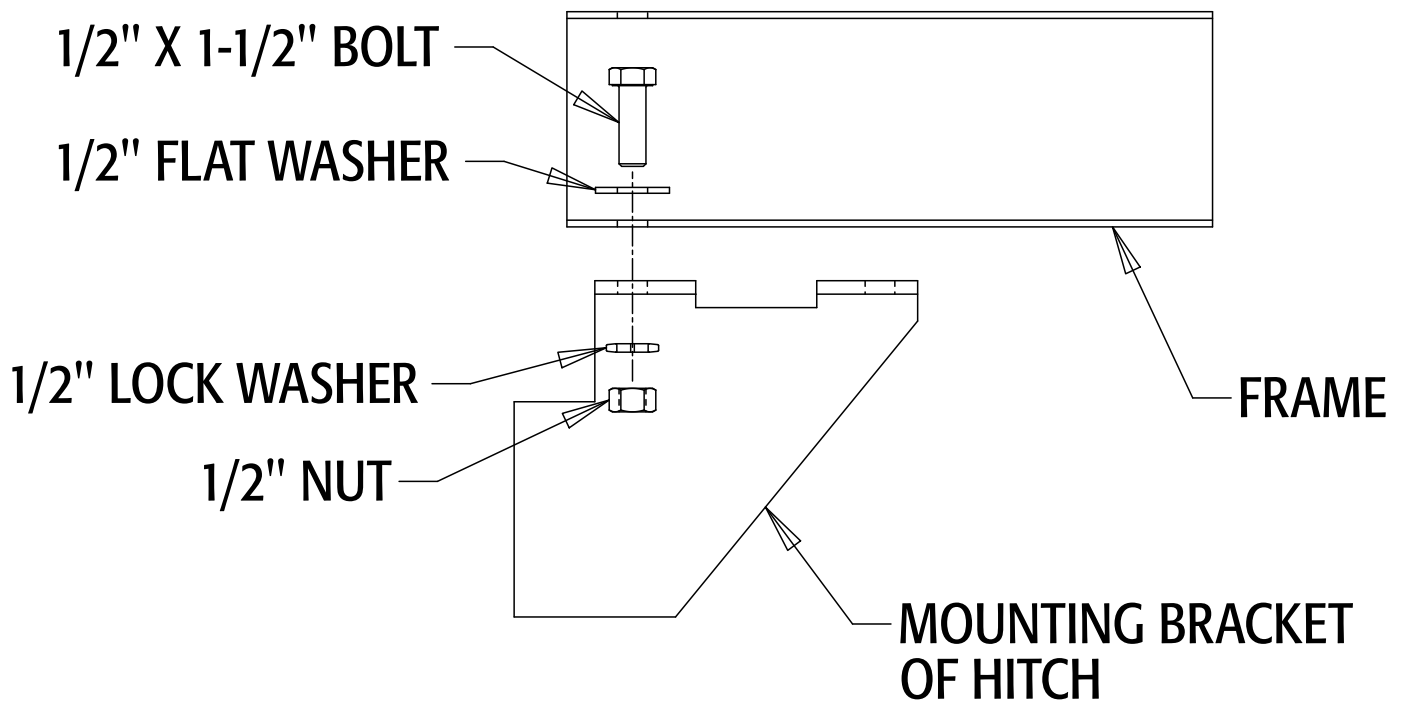
- Bolt Driver's Side Mounting Bracket to frame as shown in Figure 4.
  - Slide Center Section over Driver's Side Mounting Bracket and bolt together.
  - Slide Passenger's Side Mounting Bracket into Center Section and bolt together.
  - Bolt Passenger's Side Mounting Bracket to Frame as shown in Figure 3.
4. For Enclosed Frames the wire and spring must be used to position the bolts in the proper holes. Refer to Figure 6 for details.

5. Torque all bolts and nuts to 125 ft/lbs.

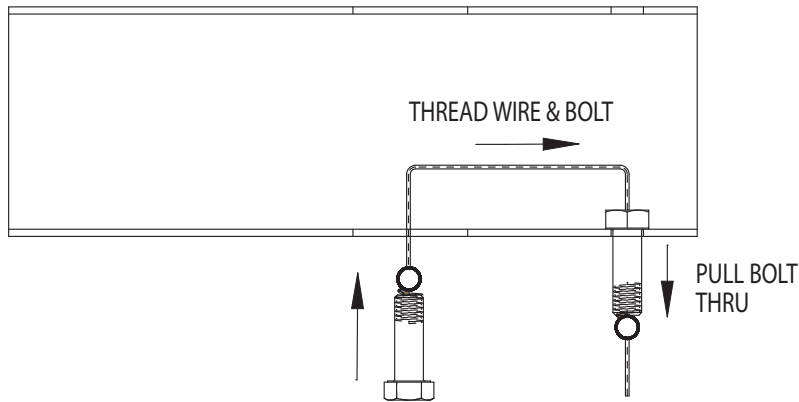
(The best way to ensure a quick, complete tightening is to use an Impact Wrench).



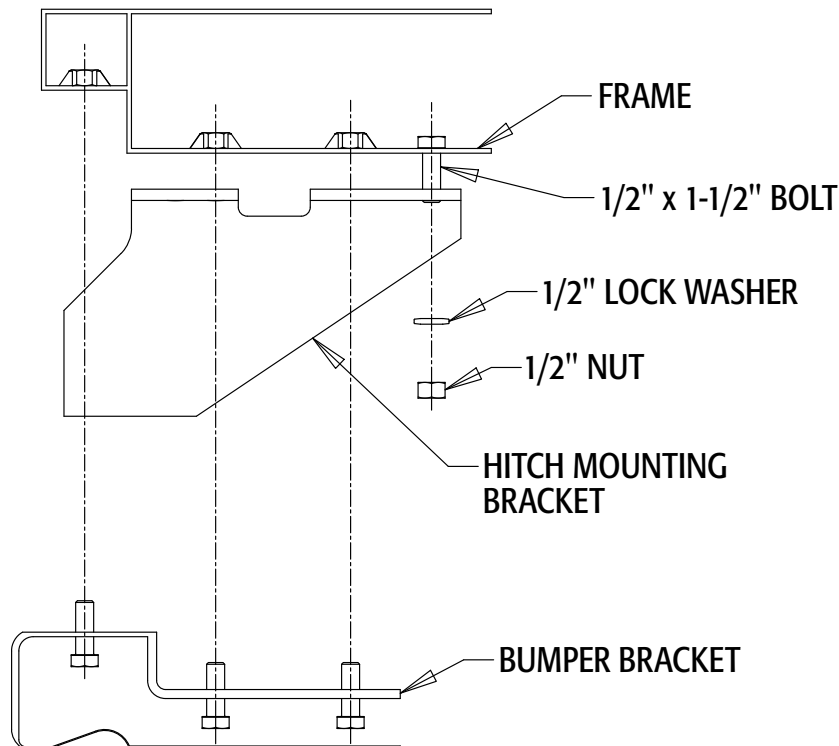
**Fig. 4**



**Fig. 5**



**Fig. 6 Enclosed Frames**



**Fig. 7 Chevy Astrovan**

**Warranty**

Buyers Products Co. warrants all truck/trailer hardware manufactured or distributed by it, to be free from defects in material and workmanship for a period of one year from date of shipment. Parts must be properly installed and used under normal conditions. Any product which has been altered, including modification, misuse, accident or lack of maintenance will not be considered under warranty. Normal wear is excluded. The sole responsibility of Buyers Products Co. under this warranty is limited to repairing or replacing any part or parts which are returned, prepaid, and are found to be defective by Buyers Products Co. Authorization from Buyers Products Co. must be obtained before returning any part. No charges for transportation or labor performed on Buyers' products will be allowed under this warranty.