

2014 Chevrolet Silverado 1500 Crew Cab Trail Armor® Rocker Panel & Sill Plate Combo Set

Set Part #14065
BW14065 Rev-0 12-22-2016

STEP 1 - PRIOR TO INSTALLATION

- A)** Bushwacker only approves installing the Trail Armor according to these written instructions with the hardware provided. **WARNING:** Failure to install according to these instructions will invalidate the warranty. This includes, but is not limited to using alternative installation methods, hardware, or materials. **DO NOT USE:** Loctite, Super-Glue, or similar products on the hardware or the flares.

NOTE: Ambient temperature and part temperature must be at least 60°F (16°C) for proper adhesion.

- B) Fit:** Verify the fit of the Trail Armor to vehicle. (Some filing, sanding, or cutting may be necessary to ensure proper fit.)
- C) Painting:** (Optional) if paint is desired it must be done prior to installing Trail Armor on vehicle. Clean outer surface with a good grade degreaser. **DO NOT USE LACQUER THINNER OR ENAMEL REDUCER AS A DEGREASER.** Wipe outer surface thoroughly with a tack rag prior to paint. Application of plastic adhesion promoter for TPO plastic as per your paint system manufacturer's recommendations is required. Paint Trail Armor using a high quality enamel, or polyurethane automotive paint. If painting edge trim (not recommended), use a flex additive.

TOOLS FOR EASY INSTALLATION:

- Cleaning Cloth

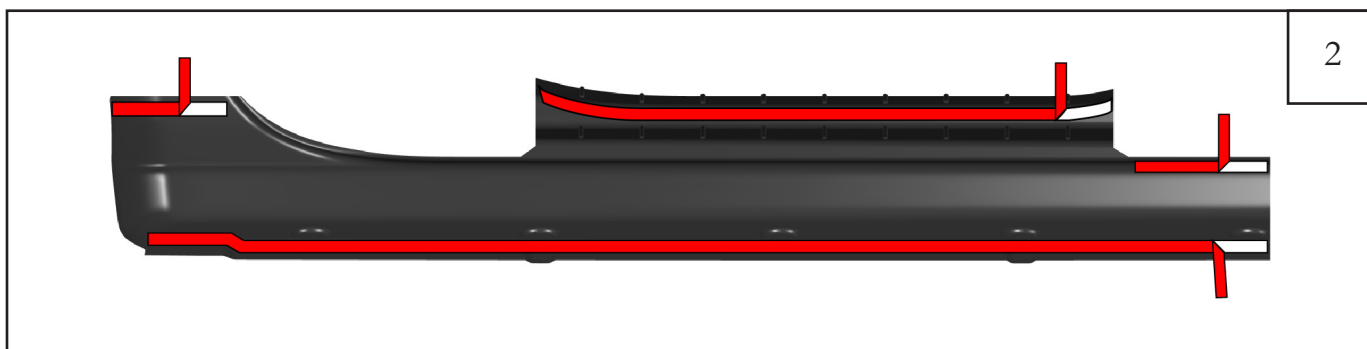
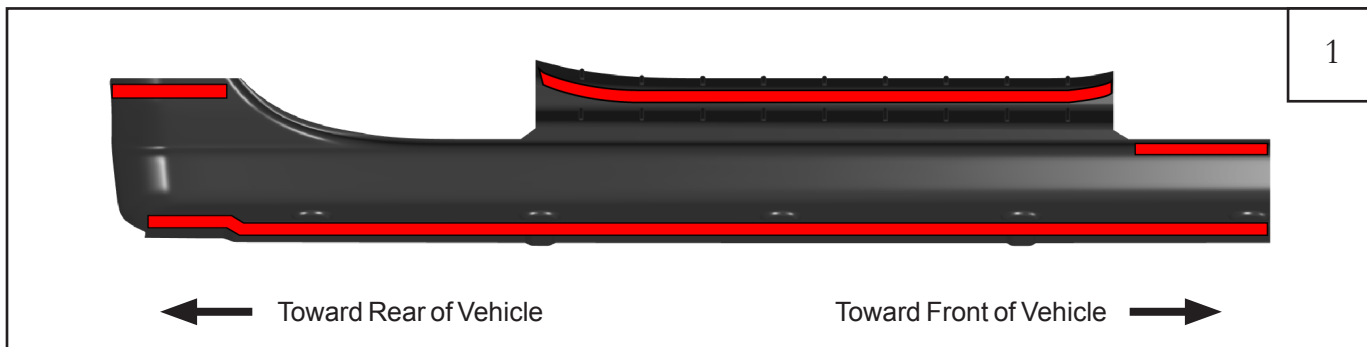
Included in Hardware Kit:

1.



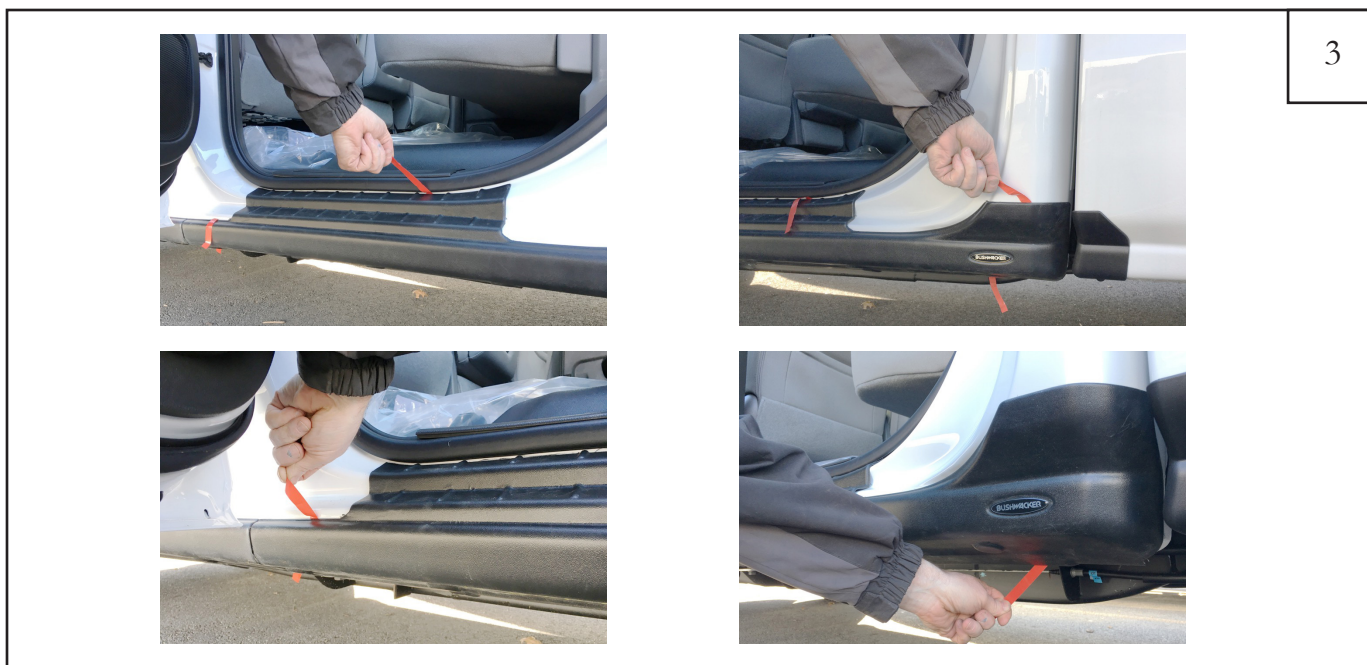
ALCOHOL
PREP
PAD
8 pcs.

Rear Side Panel Installation Procedure (Driver's Side)



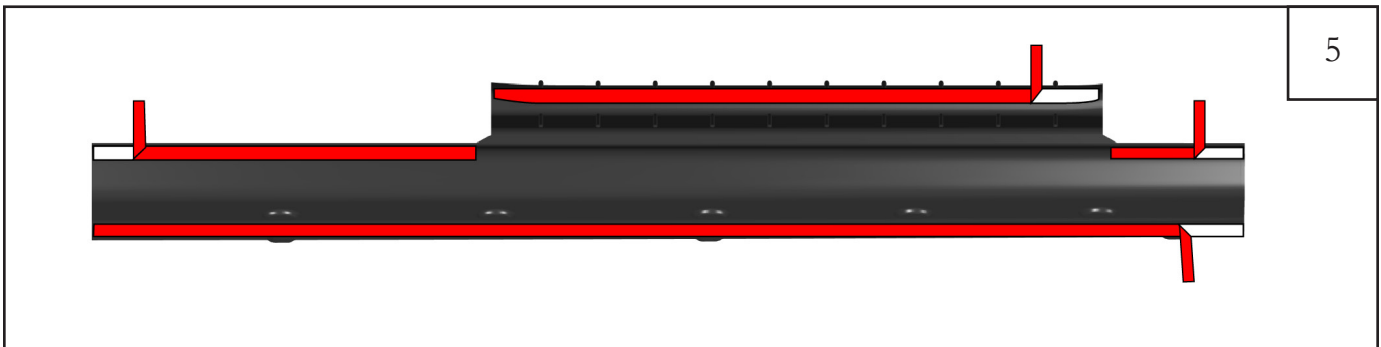
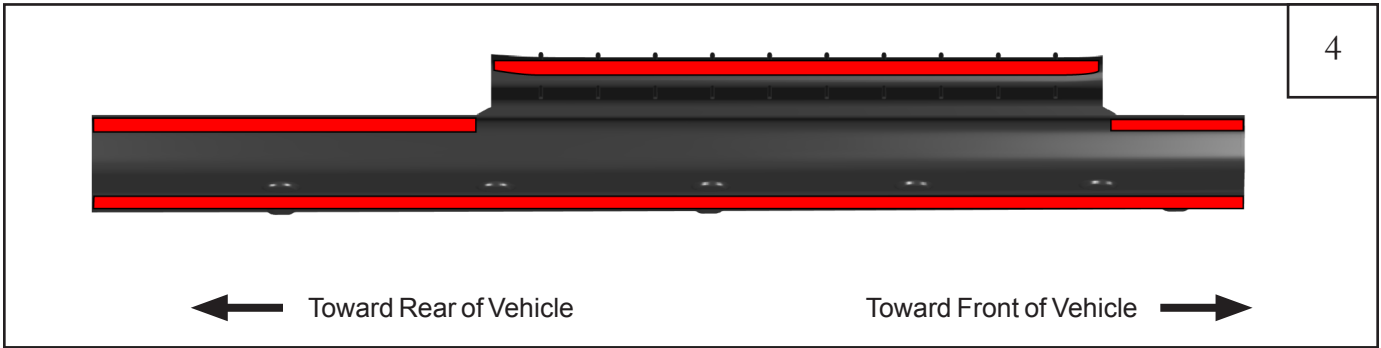
Open vehicle doors. Clean all dirt and debris from vehicle door sills and rocker panel. Use supplied alcohol wipes where part will attach.

Peel back roughly 3" of red tape liner from the pieces of tape on the back side of rear part. Make sure red tape liner will be accessible when part is attached to truck.



Set part in place on vehicle. Remove all red tape liners. Apply **FIRM** pressure to mounting locations to affix to truck.

Front Side Panel Installation Procedure (Driver's Side)



Peel back roughly 3" of red tape liner from the pieces of tape on the back side of rear part. Make sure red tape liner will be accessible when part is attached to truck.



Set part in place on vehicle. Remove all red tape liners. Apply **FIRM** pressure to mounting locations to affix to truck.

Repeat steps 1-6 for passenger side of truck