

NISSAN FRONTIER SHORT BED Set Part # 71906-02



Step 1:

Prior to Installation:

- A) Bushwacker only approves installing the flares according to these written instructions with the hardware provided. **WARNING:** Failure to install according to these instructions will invalidate the warranty. This includes, but is not limited to using alternative installation methods, hardware, or materials. **DO NOT USE:** Loctite, SuperGlue, or similar products on the hardware or the flares.
- B) **Fit:** Verify the fit of the flares to vehicle. **(Some filing, sanding, or cutting may be necessary to ensure proper fit).**
- C) **Painting:** (Optional) if paint is desired it must be done prior to installing flares on the vehicle clean outer surface with a good grade degreaser. **DO NOT USE LACQUER THINNER OR ENAMEL REDUCER AS A DEGREASER.** Wipe outer surface thoroughly with a tack rag prior to paint.
Paint flares using a high quality enamel, or polyurethane automotive paint. (Application of a primer coat is optional)
If painting edge trim (not recommended) use a flex additive.
- D) **Performance:** Using larger Tires may increase the area required to turn the vehicle. Some Tire/Rim combinations may require lowering bump stops and or installing steering stops to prevent tire from contacting flare.
- E) **Exhaust System:** Modifications may be necessary to maintain a minimum 4" clearance between flares and exhaust pipes.
(Exhaust gases should **not vent directly onto flares**)
- F) **Chrome Decals:** On Front fenders, pry off V, 8 and Endurance decals with a non-marring plastic putty knife. (Decals may be put back on after flare install is complete. New double stick foam tape will be required.)

TOOLS FOR EASY INSTALLATION

- #2 Stubby Philips Screw Driver
- Pry Tool or Flat-Bladed Screw Driver
- Grease Pencil
- Electric Drill with 5/16" bit

HARDWARE LIST

- Edge Trim (279")
- Stainless Steel Screw (29 pcs)
- Washer (29 pcs)
- Nyloc Nut (29 pcs)
- Clip (12 pcs)
- Kit Supplied Screws (12 pcs)
- Primer Ampoule (2 pcs)
- Screw Bit Driver (1 pc)

FLARE INSTALLATION PROCEDURES

Step 2: Edge Trim Installation (See Illustration #1)

- A) Peel two to three inches of red vinyl backing away from edge trim tape. Applying the adhesive side of the edge trim to the inner side of the flare, affix the edge trim to the top edge of the flare (the portion that comes in contact with the vehicle).
(See Illustration #1)
- B) Press edge trim into place along the top edge of the flare in one-foot increments, pulling red vinyl backing free as you continue to work your way around the top edge of the flare.
- C) See Page 4 for additional note about edge trim application on rear flare.

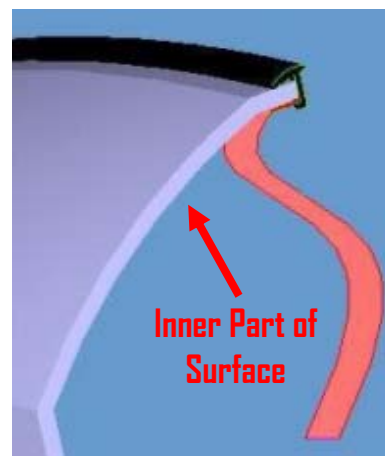


Illustration #1
Flare and Edge Trim

**STEP 3: (Front and Rear Flares)
Screw Installation (See Illustration #2)**

- A) Insert stainless steel screw and washer into front of flare, secure with nyloc nut, using a T45 Torx bit and 1/2" Socket. (See Illustration #2)

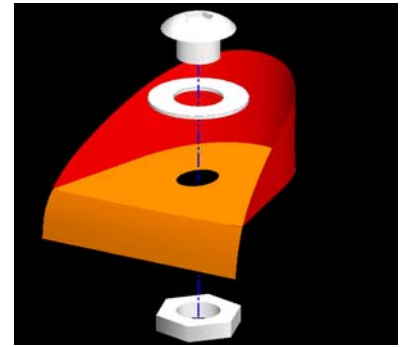
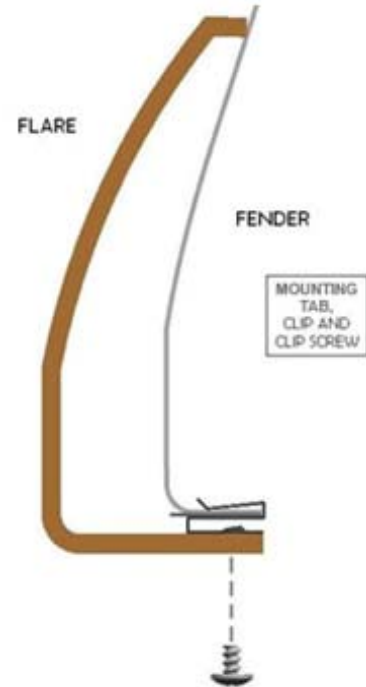


Illustration #2 Pocket Hardware

**Step 4: Front Flare Installation
(See Illustrations #3-9)**

- A) Remove factory mud flaps. (Save screws). (See Illustration #4)
- B) Hold flare in position on fender and, using a grease pencil, mark the three clip locations. Remove flare. (See Illustration #6)
- C) Apply primer to underside of the fender at the forward side of the vehicle. (See Illustration #4)
- D) Apply three black tabs centered over the marks. These should be flush even with the inner lip of the fender. (See Illustration #3 & #6)
- E) Attach three of the clips over the tabs. (See Illustration #3 & #6)
- F) Peel two inches of red liner from the tape to leave a tab exposed for later use.
- G) Position flare on fender. Apply moderate pressure and install one factory screw in the second highest hole in rear of flare inside the wheel well (circle on the left). Do not tighten. (See Illustration #7)

NOTE: THE TAPE ALONG THE FORWARD EDGE OF FLARE SHOULD NOT CONTACT UNDERSIDE LIP OF FENDER AT THIS POINT OR THE CLIPS MAY NOT STAY ON.



**Illustration #3
Cross Section of Flare and Fender
With Tab, Clip (Front & Rear) and Screw**



**Illustration #4
Front Passenger Fender**



**Illustration #5
Front Passenger Fender**

- H) At the front of the flare, the tape tab is still between the fender and bumper and **not** in contact with the fender. Install one serrated head screw in the flare hole second closest to the front (circle on the right). Do not tighten. (See Illustration #7)
- I) Install the remaining two serrated head screws in the remaining two upper holes and the two factory screws in lowest rear hole and the hole under the body. Once all screws are in position, tighten. (See Illustration #7)
- J) Peel the tape liner. Then pulling out and up, adhere the tape to the underside of the fender. Hold for thirty seconds. (See Illustration #8 & #9)



Illustration #6
Front Passenger Side Flare



Illustration #7
Front Passenger Side Flare



Illustration #8
Front Passenger Side Flare



Illustration #9
Front Passenger Side Flare



Completed Installation

Step 5: Rear Flare Installation
(See Illustrations # 3 & 10-12)

EDGE TRIM NOTE: SEE ILLUSTRATION #11. DO NOT APPLY EDGE TRIM BEYOND INDICATED POINT. DO NOT WRAP DOWN AROUND CURVE TOWARD THE GAP BETWEEN THE CAB AND THE BED.

- A) Remove two factory screws from the mud flap. (Save factory screws.) **(See Illustration #6)**
- B) Hold flare in position on fender and, using grease pencil, mark where the holes in the flare are. **(See Illustration #11)**
- C) Place three mounting tabs at the marks on the vehicle. These should be flush with the inner lip of the fender. **(See Illustration #3 & #11)**
- D) Place three clips over the mounting tabs. **(See Illustration #3)**
- E) Hold flare in position on fender using moderate pressure. Line up upper screw hole in inner wheel well of the rear of flare with the supplied kit screw and start. Do not tighten. **(See Illustration #12)**
- F) Start supplied screws in the other two clip locations and start the two factory screws at rear of flare. Do not tighten. **(See Illustration #12)**
- G) Ensuring the flare is properly located on fender, apply moderate pressure to outside surface of flare, and tighten screws with a Phillips screwdriver, beginning with the screw in the upper hole of the inner wheel well and working toward the front of the fender flare then going back to the two factory screws at rear of flare. **(See Illustration #12)**

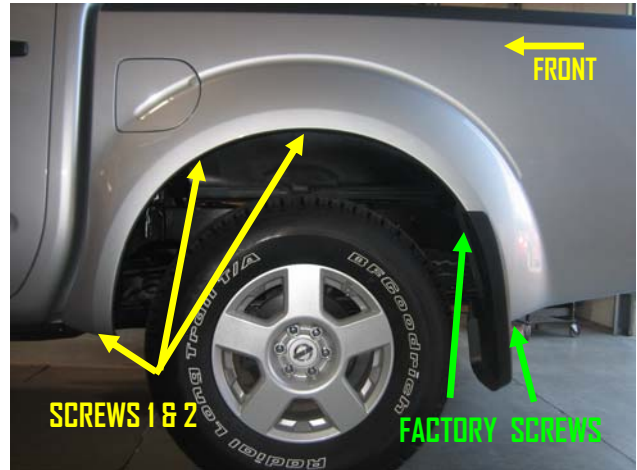


Illustration #10
Rear Driver Side Fender



Illustration #11
Rear Driver Side Flare

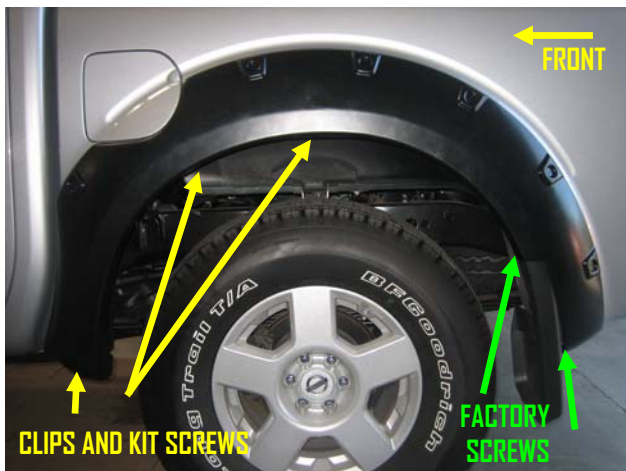


Illustration #12
Rear Driver Side Flare



Completed Installation