

Nissan Titan Rear Pair w/Storage Door

Set Part #70014-02

STEP 1 – PRIOR TO INSTALLATION

- A)** Bushwacker only approves installing the flares according to these written instructions with the hardware provided. **WARNING:** Failure to install according to these instructions will invalidate the warranty. This includes, but is not limited to using alternative installation methods, hardware, or materials. **DO NOT USE:** Loctite, SuperGlue, or similar products on the hardware or the flares.
- B) Fit:** Verify the fit of the flares to vehicle. (Some filing, sanding, or cutting may be necessary to ensure proper fit).
- C) Painting:** (Optional) if paint is desired it must be done prior to installing flares on vehicle. Clean outer surface with a good grade degreaser. **DO NOT USE LACQUER THINNER OR ENAMEL REDUCER AS A DEGREASER.** Wipe outer surface thoroughly with a tack rag prior to paint. Application of plastic adhesion promoter for ABS plastic as per your paint system manufacturer's recommendations is required. Paint flares using a high quality enamel, or polyurethane automotive paint. If painting edge trim (not recommended), use a flex additive.
- D) Performance:** Using larger Tires may increase the area required to turn the vehicle. Some Tire/Rim combinations may require lowering bump stops and or installing steering stops to prevent tire from contacting flare.
- E) Exhaust System:** Modifications may be necessary to maintain a minimum 4" clearance between flares and exhaust pipes. (Exhaust gases should not vent directly onto flares)
- F) Metal Protection:** All exposed fasteners and bare metal should be treated with rust resistant paint **BEFORE** installing flares. Spray inner fender wells with undercoating **AFTER** flare attachments have been completed.
- G) Decals:** Flares may interfere with existing decals on vehicle. If you wish, remove decals prior to installation of flares.



TOOLS FOR EASY INSTALLATION:

- Utility Knife
- Vinyl or Plastic Putty Knife
- Automotive Trim Pry Tool
- #2 Right Angle Ratcheting Screwdriver
- Socket Wrench
- 1/2" Socket

LIMITED LIFETIME WARRANTY AGAINST ANY MANUFACTURING DEFECTS

- To claim a warranty, you must provide Proof of Purchase.

Included in Hardware Kit:

- | | | | | | | | | | | | | | |
|----|---|----|---|-----|---|-----|---|----|--|----|---|----|---|
| 1. |  | 2. |  | 3. |  | 4. |  | 5. |  | 6. |  | 7. |  |
| | CL1-0005,
Dacromet "U"
Spring Clip,
11 pcs | | SW1-0050,
10 x 5/16 Phillips
Truss Screw,
11 pcs | | GR1-0001,
#14 Screw Nylon
Grommet,
3 pcs | | SW1-0057,
#14 x 3/4" Phillips
Truss Tap Screw,
2 pcs | | SP1-0004,
1/2" x .257" x 1/2"
Nylon Spacer,
1 pc | | SW1-0034,
14 x 1-3/4" Phillips
Truss Tap Screw,
1 pc | | SW1-0059,
5/16 x 18 x 3/8"
SS Torx Screw,
20 pcs |
| 8. |  | 9. |  | 10. |  | 11. |  | | | | | | |
| | WA1-0012,
.320 x .700 x .03
SS Washer,
20 pcs | | NU1-0019,
5/16-18 Jam Fin.
Nylock Nut,
20 pcs | | SW1-0052,
T-45 Torx Bit,
1 pc | | GP1-0001,
Small Wiper Style
Edge Trim,
180 in | | | | | | |

STEP 2 - EDGE TRIM INSTALLATION

- A) Peel two to three inches of red vinyl backing away from Edge Trim (GP1-0001) tape. Applying the adhesive side of the edge trim to the inner side of the flare, affix the edge trim to the top edge of the flare (the portion that comes in contact with the vehicle).
- B) Press edge trim into place along the top edge of the flare in one-foot increments, pulling red vinyl backing free as you continue to work your way around the top edge of the flare.



Flare Pocket Hardware Installation



Put a Washer (WA1-0012) on each Bolt (SW1-0059).

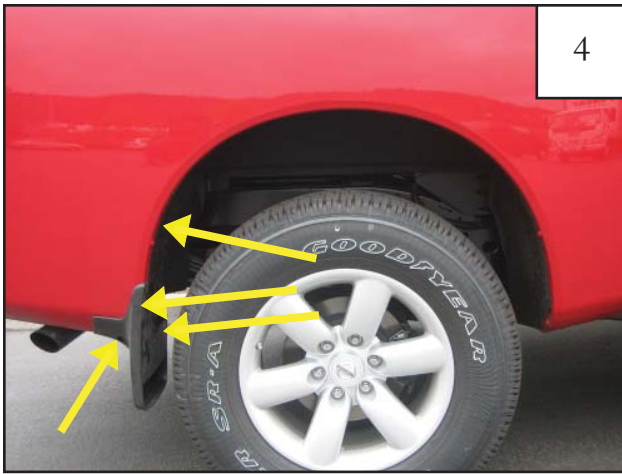


Put each Bolt/Washer combination through a pocket hole in the flare, Bolt head and Washer on the outside.



Place a Nut (NU1-0019) over the end of each Bolt and tighten, using a 1/2" wrench for the Nut and the supplied Torx Bit (SW1-0052) for the Bolt. Repeat for remaining pockets.

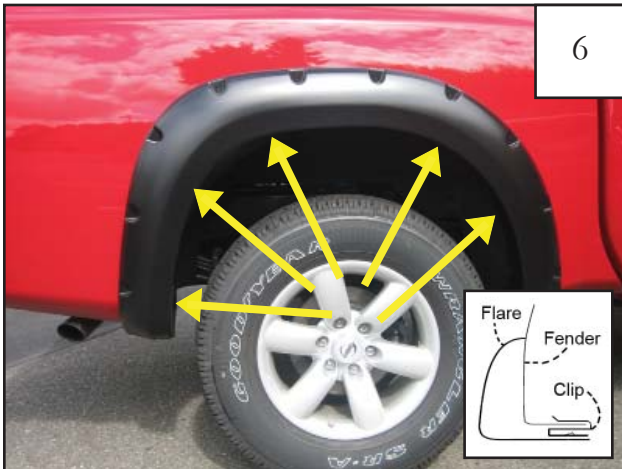
Rear Flare Installation Procedures



Passenger Side Flare: Remove factory mud flaps if installed, and one extra unpainted screw above mud flap. *Save for reinstallation.*



Passenger Side Flare: Hold (RR) flare in position on fender with moderate pressure. Line up the lowest hole in fender with the hole in flare and start the factory screw. *Do not fully tighten screws.*



Passenger Side Flare: Install four Clips (CL1-0005) over fender lip, lining up the hole in Clips with the holes in flare. Start Screws (SW1-0050) in each Clip. *Do not fully tighten screws.*



Passenger Side Flare: Insuring the flare is properly located on fender, apply moderate pressure to outside surface of flare, tighten all screws, beginning with the factory screw working toward the front of the fender flare.



Passenger Side Flare: Completed rear flare installation.

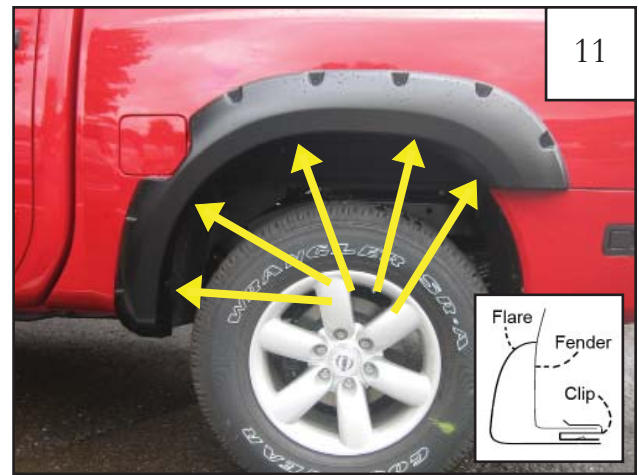


Driver Side Flare: Remove factory mud flaps if installed, and one extra unpainted screw above mud flap.



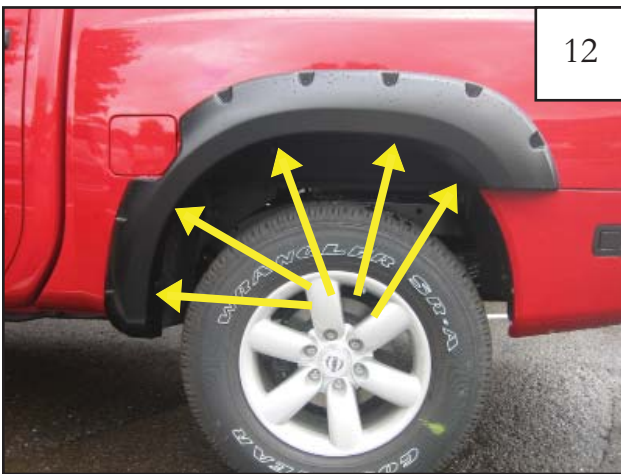
10

Driver Side Flare: Hold (LR) flare in position on fender with moderate pressure. Ensure the notch in the flare is positioned correctly with the gas door.



11

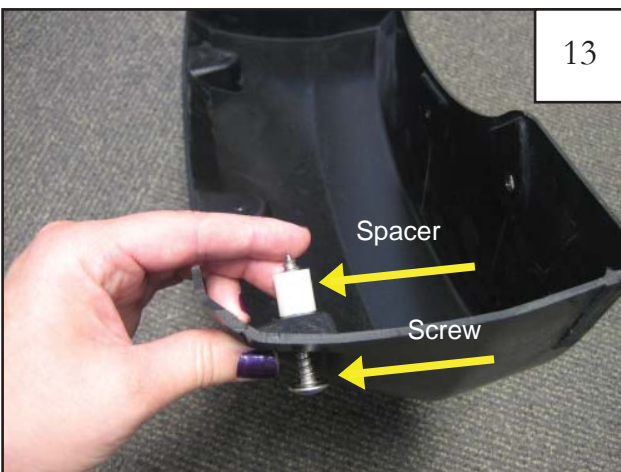
Driver Side Flare: Install five Clips (CL1-0005) over fender lip, lining up the hole in clips with the holes in flare. Start Screws (SW1-0050) in each Clip. *Do not fully tighten screws.*



12

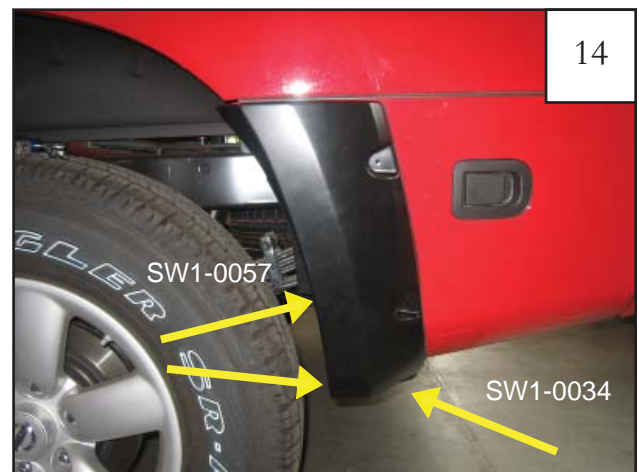
Driver Side Flare: Insuring the flare is properly located on fender, apply moderate pressure to outside surface of flare, and tighten screws, beginning with the lower front screw working toward the access door.

Access Door Installation Without Mud Flap



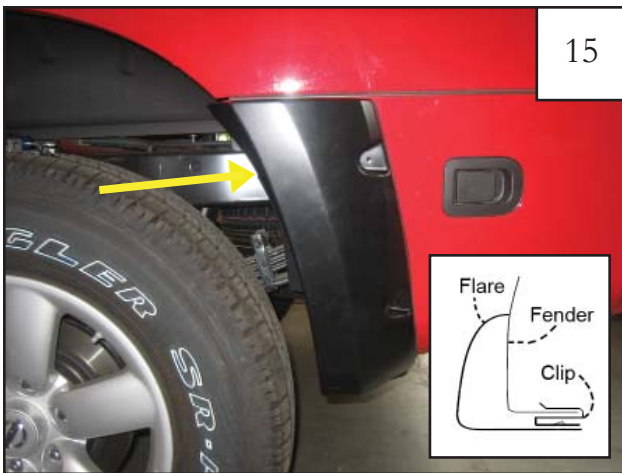
13

On the bottom of the door, pry out the Christmas Tree fastener. Open access door. Remove edge protector from door lip and discard. Insert two plastic grommets into the square holes on the edge of the door and one into the Christmas tree hole. Insert the supplied Screw (SW1-0034) through bottom hole in flare, and slide the supplied Spacer (SP1-0004) onto Screw on inside of flare



14

Hold the door piece flare up to the door and line up the holes in the flare with the three factory holes. Start the Screw (SW1-0034) into the bottom grommet first, then move onto the Screw (SW1-0057). *Do not fully tighten screws.*



15

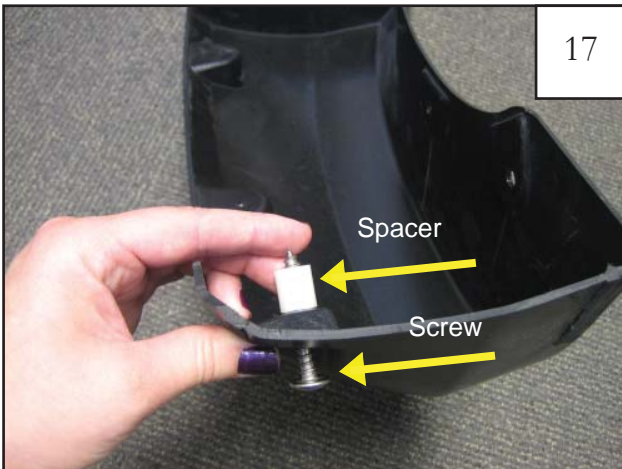
Slide a Clip (CL1-0005) over the door lip at the top of the door where the indent in the flare is. (The clip will be at a slight angle). Start Screw (SW1-0050). *Do not fully tighten screws.*



16

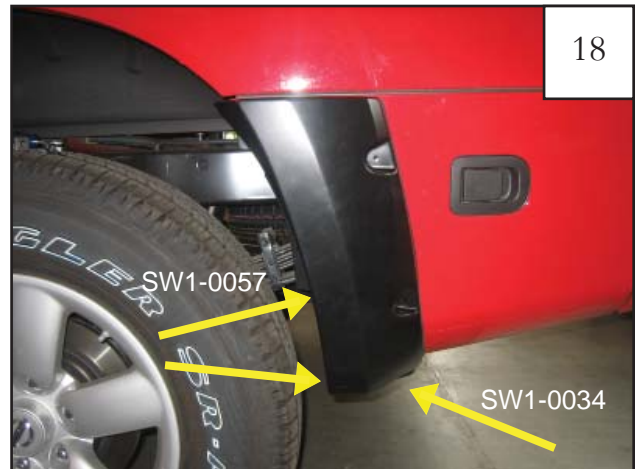
Insuring the door piece is properly located on door, apply moderate pressure to outside surface of flare, and tighten all screws, starting with the lowermost screw and moving up the part.

Access Door Installation With Mud Flap



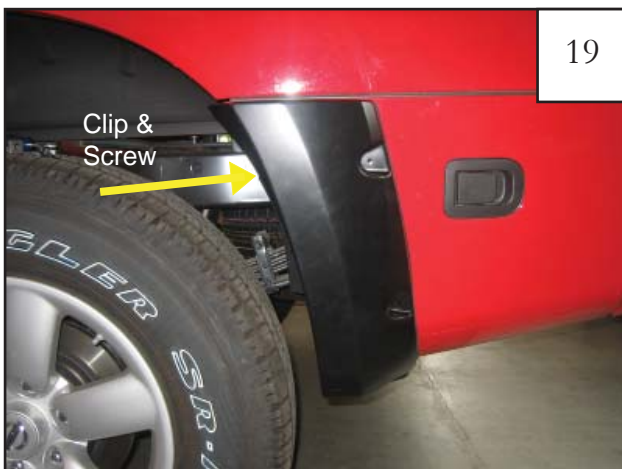
17

Remove factory mudflap and save the hardware (Step 9). Pry out the factory grommet on the lower surface of the door and install a supplied grommet. Open access door. Remove edge protector from door lip and discard. Insert the supplied Screw (SW1-0034) through bottom hole in flare, and slide the supplied Spacer (SP1-0004) onto Screw on inside of flare



18

Hold the door piece flare up to the door and line up the holes in the flare with the three factory holes. Start the Screw (SW1-0034) into the bottom grommet first, then move onto the Screw (SW1-0057). *Do not fully tighten screws.*



19

Slide a Clip (CL1-0005) over the door lip at the top of the door where the indent in the flare is. (The clip will be at a slight angle). Start Screw (SW1-0050). *Do not fully tighten screws.*



20

Insuring the door piece is properly located on door, apply moderate pressure to outside surface of flare, and tighten all screws, starting with the lowermost screw and moving up the part.