

Dodge Dakota

Quad Cab

Set Part # 51908

Step 1:

Prior to Installation:

- A) **Fit:** Verify the fit of the flares to vehicle. (Some filing, sanding, or cutting may be necessary to ensure proper fit). **DO NOT USE:** Loctite, SuperGlue, or similar products on the hardware or the flares.
- B) **Painting:** (Optional) if paint is desired it must be done prior to installing flares on the vehicle clean outer surface with a good grade degreaser. **DO NOT USE LACQUER THINNER OR ENAMEL REDUCER AS A DEGREASER.** Wipe outer surface thoroughly with a tack rag prior to paint. Paint flares using a high quality enamel, or polyurethane automotive paint. (Application of a primer coat is optional) If painting edge trim (not recommended), use a flex additive.
- C) **Performance:** Using larger Tires may increase the area required to turn the vehicle. Some Tire/Rim combinations may require lowering bump stops and or installing steering stops to prevent tire from contacting flare.
- D) **Exhaust System:** Modifications may be necessary to maintain a minimum 4" clearance between flares and exhaust pipes. (Exhaust gases should not vent directly onto flares)
- E) **Metal Protection:** All exposed fasteners and bare metal should be treated with red oxide primer BEFORE installing flares. Spray inner fender wells with undercoating AFTER flare attachments have been completed.



TOOLS FOR EASY INSTALLATION

- #2 Phillips Screwdriver (Stubby or Right-Angle)
- Grease Pencil
- Awl (to help center holes)
- Trim Tool (for part removal)

FLARE INSTALLATION PROCEDURES

Step 2: Edge Trim Installation (See Illustration #1)

- A) Peel two to three inches of red vinyl backing away from edge trim tape. Applying the adhesive side of the edge trim to the inner side of the flare, affix the edge trim to the top edge of the flare (the portion that comes in contact with the vehicle). **See Illustration #1**
- B) Press edge trim into place along the top edge of the flare in one-foot increments, pulling red vinyl backing free as you continue to work your way around the top edge of the flare.
- C) **NOTE:** For the Front Flare – Install the edge trim from the front edge of the flare to the indent along the back edge and trim flush. **See Photo #1.**



Illustration #1



1



8

Slide two supplied "S" Clips over factory holes located in rear of wheel well as shown.



9

Slide a supplied "U" Clip onto factory hole in Splash Guard.



10

Hold the flare on the fender. Start a supplied #8 Truss-Head Screw through the lower rear hole in the flare and into the "U" Clip installed in Step 9.



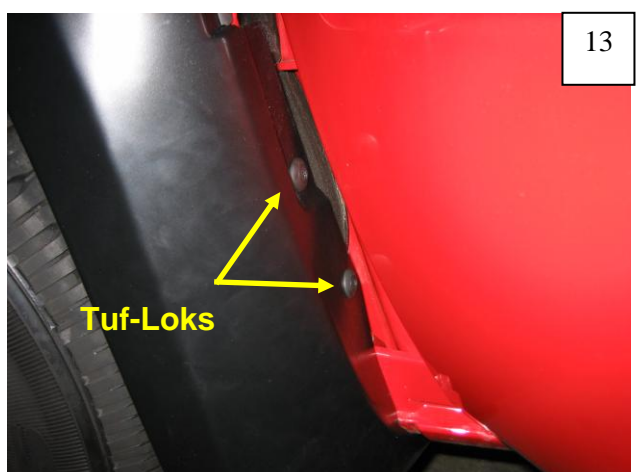
11

Use an awl if necessary to locate and align holes in flare and clips.



12

Start supplied Serrated-Flange Screws through the three upper holes in the flare and into the threaded holes in the clips. Tighten all screws.



13

Open the door. Insert supplied Tuf-Loks through existing holes in flare and into holes in fender (2 places).

Step 4: Rear Fender Flare Installation (See Photos #14 through #21)



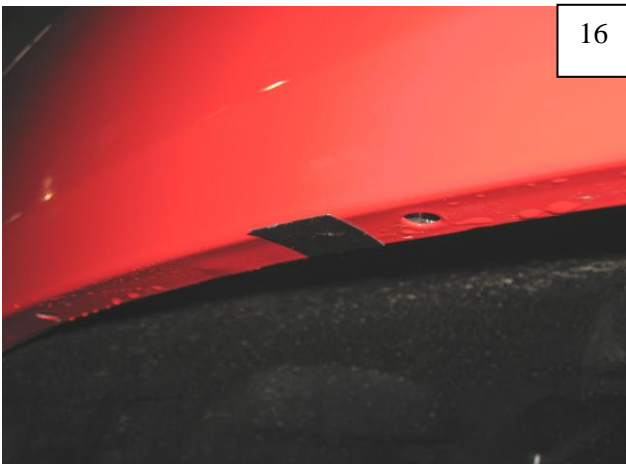
14

Hold the flare in position on fender. Using the holes in the flare as a guide, mark hole locations on the fender lip with a grease pencil (6 places).



15

Clip Hole locations.



16

Apply supplied Plastic Tabs along the edge of the fender, centering the tabs on the marks made in Step 4. Tabs should be flush to inner edge.



17

Slide the supplied "S" Clips over the Plastic Tabs on the fender lip (6 places).



18

Use an awl if necessary to locate and align holes in flare and clips.



19

Start supplied Serrated-Flange Screws through the holes in the flare and into the threaded holes in the clips. Tighten all screws.

20



Using supplied Edge Trim Tool, seat edge trim against vehicle by hooking curved end under edge trim at one end of flare and slide around outer edge of flare to the other end.

21



Using flat end of supplied Edge Trim Tool, seat edge trim against flare by inserting straight end between edge trim and flare at one end and slide around entire edge to the other end.