



## STEP 1 – PRIOR TO INSTALLATION

- A) Bushwacker only** approves installing the flares according to these written instructions with the hardware provided. **WARNING:** Failure to install according to these instructions will invalidate the warranty. This includes, but is not limited to using alternative installation methods, hardware, or materials. **DO NOT USE:** Loctite, SuperGlue, or similar products on the hardware or the flares.
- B) Fit:** Verify the fit of the flares to vehicle. (Some filing, sanding, or cutting may be necessary to ensure proper fit).
- C) Painting:** (Optional) if paint is desired it must be done prior to installing flares on vehicle. Clean outer surface with a good grade degreaser. **DO NOT USE LACQUER THINNER OR ENAMEL REDUCER AS A DEGREASER.** Wipe outer surface thoroughly with a tack rag prior to paint. Application of plastic adhesion promoter for ABS plastic as per your paint system manufacturer's recommendations is required. Paint flares using a high quality enamel, or polyurethane automotive paint. If painting edge trim (not recommended), use a flex additive.
- D) Performance:** Using larger Tires may increase the area required to turn the vehicle. Some Tire/Rim combinations may require lowering bump stops and or installing steering stops to prevent tire from contacting flare.
- E) Exhaust System:** Modifications may be necessary to maintain a minimum 4" clearance between flares and exhaust pipes. (Exhaust gases should not vent directly onto flares)
- F) Metal Protection:** All exposed fasteners and bare metal should be treated with rust resistant paint **BEFORE** installing flares. Spray inner fender wells with undercoating **AFTER** flare attachments have been completed.
- G) Decals:** Flares may interfere with existing decals on vehicle. If you wish, remove decals prior to installation of flares.

# RAM Pocket Style® Fender Flares Set of 4

Set Part #50915-XX  
Rev-11 4/21/2015

## TOOLS FOR EASY INSTALLATION:

- Socket Wrench
- T-15 Torx Bit
- #2 Phillips Screwdriver
- Grease Pencil
- Measuring Tape / Ruler
- Pry Tool
- Awl (Optional)
- Right Angle Ratchet (Optional)

## LIMITED LIFETIME WARRANTY AGAINST ANY MANUFACTURING DEFECTS

- To claim a warranty, you must provide Proof of Purchase.

## Included in Hardware Kit:

- |   |  |  |  |  |   |  |
|---|--|--|--|--|---|--|
| 1. <br>CL1-0022,<br>#10 "U" Clip,<br><br>6 pcs                   | 2. <br>ET1-0002,<br>Edge Trim Tool,<br><br>1 pc               | 3. <br>GP1-0005,<br>Large Wiper Style<br>Edge Trim,<br>315 inches | 4. <br>NU1-0019,<br>5/16-18 Jam Fin.<br>Nylock Nut,<br>34 pcs | 5. <br>SW1-0052,<br>T-45 Torx Bit,<br><br>1 pc | 6. <br>SW1-0056,<br>#8 x 3/4"<br>PH Screw,<br>24 pcs | 7. <br>MT1-0014,<br>1" x1.5" x.01"<br>Black Mylar Tab,<br>6 pcs |
| 8. <br>SW1-0067,<br>5/16 x 18 x 3/8"<br>SS Torx Screw,<br>34 pcs | 9. <br>WA1-0012,<br>.320 x .700 x .03<br>SS Washer,<br>34 pcs |  |  |  |   |  |

**If your flares already have the edge trim and pocket hardware installed, skip to Front Flare Installation Step 4.**

## STEP 2 - EDGE TRIM INSTALLATION

A. Peel two to three inches of red vinyl backing away from Edge Trim (GP1-0005) tape. Applying the adhesive side of the edge trim to the inner side of the flare, affix the edge trim to the top edge of the flare (the portion that comes in contact with the vehicle).

B. Press edge trim into place along the top edge of the flare in one-foot increments, pulling red vinyl backing free as you continue to work your way around the top edge of the flare.

**C. FRONT FLARES ONLY:** The edge trim must be cut to prevent bunching and stretching at the forward end of the part where the flare goes along the headlight. Refer to pictures A and B.



Start at the rearward end of the front flare and work toward the front. At the outward, right angle curve in the flare, cut a V out of the edge trim so when you wrap around the part, the edge trim doesn't bulge.



At the inward, right angle curve in the flare, cut a notch in the edge trim so when you along the part, the edge trim doesn't stretch.

## Pocket Hardware Installation:



Put a Washer (WA1-0012) on each Bolt (SW1-0067).



Put each Bolt/Washer combination through a pocket hole in the flare, Bolt head and Washer on the outside.



Place a Nut (NU1-0019) over the end of each Bolt and tighten, using a 1/2" wrench for the Nut and the supplied Torx Bit (SW1-0052) for the Bolt. Repeat for remaining pockets.

## Front Flare Installation Procedures (Passenger's Side):



This vehicle has two types of front bumpers, metal and plastic. Installation of this flare is not affected by which bumper the vehicle has. Pictured here is the metal bumper.



(OPTIONAL) If an emblem interferes with proper installation of flare, remove it. Apply adhesive remover to the emblem for ease of removal. Using a plastic putty knife, carefully remove it, taking caution not to scratch the paint.



Remove three factory installed screws with 8mm socket wrench.



**2011-12 Models Only (Optional):** If you encounter a fit problem, remove inner piece at bottom rear of wheel well. Remove screws using an 8mm socket



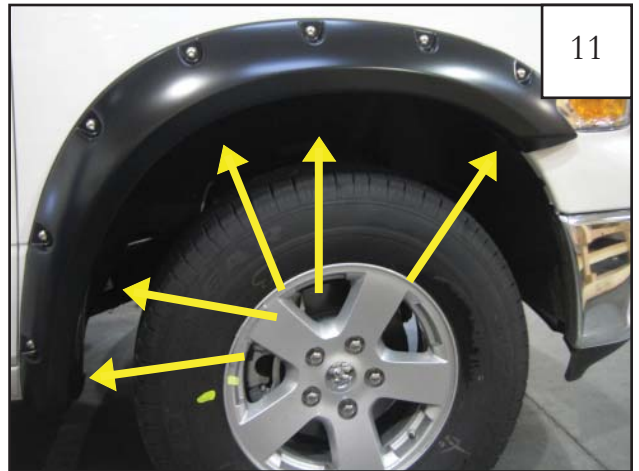
Install Clips (CL1-0022) at these locations. See Steps 9-10.



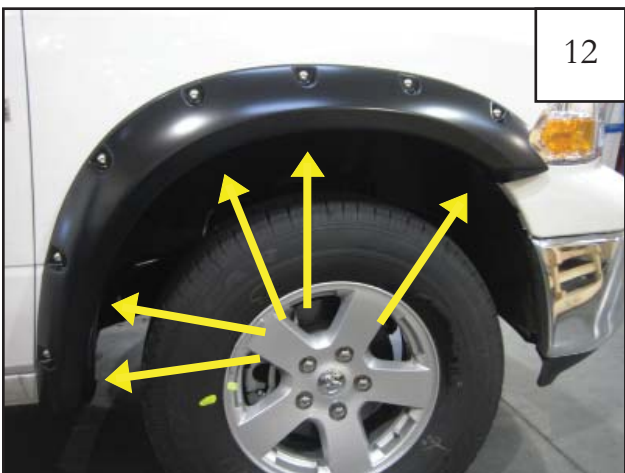
Install two tabs (MT1-0002) over factory holes. *There are two factory holes near the rearward arrow. The correct hole for install is the one more toward the front of the vehicle.*



Install Clip (CL1-0022) over existing factory holes. There are two holes at the top center location. The hole for proper installation is the one toward the front of the vehicle. *NOTE: The clip may fit over the lip loosely. This can be fixed by pinching the clip more tightly to the vehicle.*



Hold flare to vehicle and start supplied Screws (SW1-0056) with a Phillips screwdriver. *Do not tighten.*



Press firmly on flare and tighten all screws.



Completed front flare installation.

# Rear Flare Installation Procedures (Passenger's Side):



**2012 Models Only (Optional):** If you encounter a fit problem, remove inner piece at bottom rear and front of wheel well.



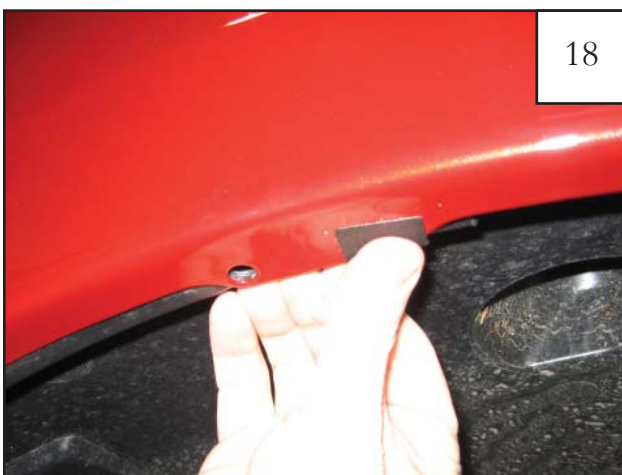
**2012 Models Only (Optional):** Remove inner piece at bottom rear of wheel well using a pry tool.



Remove these six factory installed screws using an 8mm socket wrench. X's indicate a factory screw that will not be removed.



Install Clip (CL1-0022) in this location. See step 19.



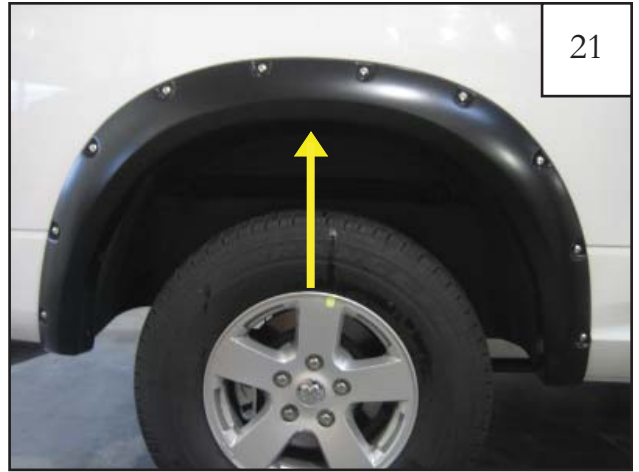
Install plastic tab over existing factory hole.



Install Clip (CL1-0022) over existing hole.



Using an awl or similar pointed tool, poke a hole through plastic tab using the speed clip hole as a guide.



Start Screw (SW1-0056) using a Phillips Head Screwdriver. *Do not tighten.*



Hold flare in place start six supplied screws using an Phillips Head Screwdriver. *Do not tighten.*

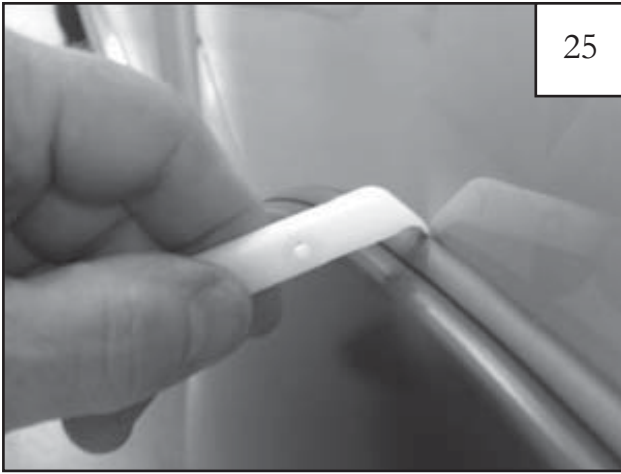


Press firmly on flare and tighten all screws.

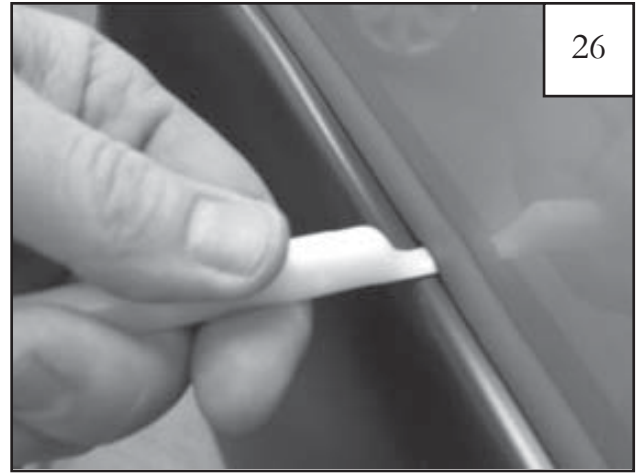


Completed rear flare installation.

## Edge Trim Tool Procedures:



Using supplied Edge Trim Tool (ET1-0002), seat edge trim against vehicle by hooking curved end under edge trim at one end of flare. Next, slide around outer edge of flare to the other end.



Using flat end of supplied Edge Trim Tool (ET1-0002), seat edge trim against flare by inserting straight end between edge trim and flare at one end. Next, slide around entire edge to the other end.