



STEP 1 – PRIOR TO INSTALLATION

- A) Bushwacker only** approves installing the flares according to these written instructions with the hardware provided. **WARNING:** Failure to install according to these instructions will invalidate the warranty. This includes, but is not limited to using alternative installation methods, hardware, or materials. **DO NOT USE:** Loctite, SuperGlue, or similar products on the hardware or the flares.
- B) Fit:** Verify the fit of the flares to vehicle. (Some filing, sanding, or cutting may be necessary to ensure proper fit).
- C) Painting:** (Optional) if paint is desired it must be done prior to installing flares on vehicle. Clean outer surface with a good grade degreaser. **DO NOT USE LACQUER THINNER OR ENAMEL REDUCER AS A DEGREASER.** Wipe outer surface thoroughly with a tack rag prior to paint. Application of plastic adhesion promoter for ABS plastic as per your paint system manufacturer's recommendations is required. Paint flares using a high quality enamel, or polyurethane automotive paint. If painting edge trim (not recommended), use a flex additive.
- D) Performance:** Using larger Tires may increase the area required to turn the vehicle. Some Tire/Rim combinations may require lowering bump stops and or installing steering stops to prevent tire from contacting flare.
- E) Exhaust System:** Modifications may be necessary to maintain a minimum 4" clearance between flares and exhaust pipes. (Exhaust gases should not vent directly onto flares)
- F) Metal Protection:** All exposed fasteners and bare metal should be treated with rust resistant paint **BEFORE** installing flares. Spray inner fender wells with undercoating **AFTER** flare attachments have been completed.
- G) Decals:** Flares may interfere with existing decals on vehicle. If you wish, remove decals prior to installation of flares.

RAM "OE" Style® Fender Flares Front Pair

Front Part #50049-02
Rev-3 10/10/2013

TOOLS FOR EASY INSTALLATION:

- Utility Knife
- #2 Phillips Driver
- Socket Wrench
- 8 mm Socket
- 3/8" Wrench

LIMITED LIFETIME WARRANTY AGAINST ANY MANUFACTURING DEFECTS

- To claim a warranty, you must provide Proof of Purchase.

Included in Hardware Kit:

- | | | | | | | | | | | | | | |
|----|---|----|---|----|---|----|---|----|--|----|---|----|---|
| 1. |  | 2. |  | 3. |  | 4. |  | 5. |  | 6. |  | 7. |  |
| | CL1-0022,
#10 "U" Clip,
8 pcs | | SW1-0056,
#8 x 3/4"
PH Screw,
16 pcs | | SW1-0003,
10-24 x 3/4"
Phillips PH Screw,
2 pcs | | NU1-0004,
10-24 Nylock Nut,
2 pcs | | SP1-0002,
1/2" x .260" x 1/8"
Nylon Spacer,
2 pcs | | GP1-0005,
Large Wiper Style
Edge Trim,
170 inches | | ET1-0002,
Edge Trim Tool,
1 pc |

STEP 2 - EDGE TRIM INSTALLATION

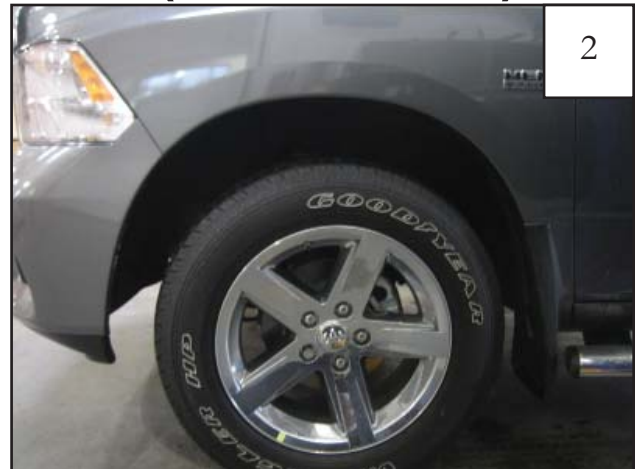
- A) Peel two to three inches of red vinyl backing away from Wiper Style Edge Trim (GP1-0005) tape. Applying the adhesive side of the edge trim to the inner side of the flare, affix the edge trim to the top edge of the flare (the portion that comes in contact with the vehicle).
- B) Press edge trim into place along the top edge of the flare in one-foot increments, pulling red vinyl backing free as you continue to work your way around the top edge of the flare.



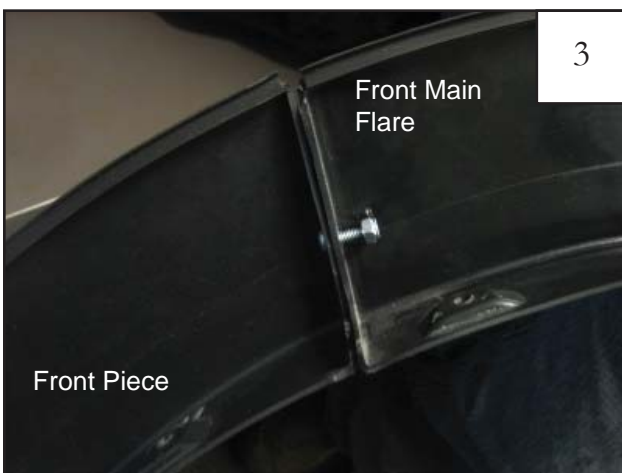
Front Flare Installation Procedures (Driver's Side):



Determine which bumper your vehicle has, metal or plastic. For the metal bumper, use the shorter of the two front pieces. Pictured here is the metal bumper. Refer to step 10 for image of shorter front piece length.



OPTIONAL BUMPER PIECE: This vehicle comes with different bumper sizes. If installing the optional bumper piece, verify which piece to use by holding it up to the bumper and making sure it lines up with factory edges and hole locations. After identifying bumper piece, apply edge trim along outer surface. Pictured here is the plastic bumper. Refer to step 11 for longer front piece length.



Bolt front main flare and front pieces together with #10-24x3/4" Phillips Pan Machine Screw (SW1-0003) and #10-24x3/8" Nylock Nut (NU1-0004). Use a 3/8" wrench to hold #10-24x3/8" Nylock Nut in place.



Remove four factory installed screws with 8mm socket wrench.



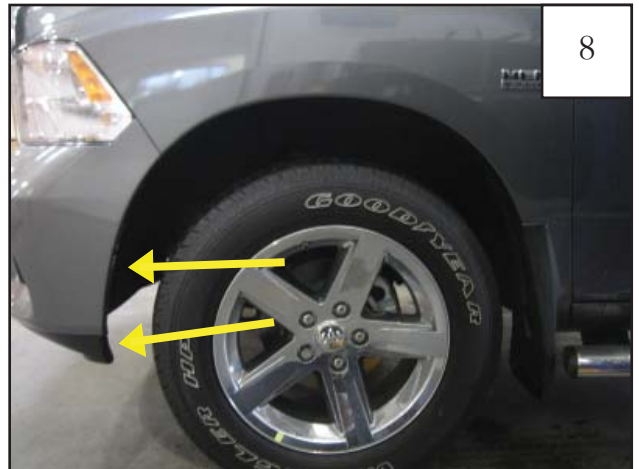
2011-up Models Only (Optional): If you encounter a fit problem, remove inner piece at bottom of front and rear wheel well.



PLASTIC BUMPER ONLY: Remove two factory installed tufflocks.



Install #10 U-Clips (CL1-0022) at these locations. See step 9. *NOTE: There are two factory holes near the rearward arrow. The correct hole for install is the one more toward the front of the vehicle.*



PLASTIC BUMPER ONLY: Install #10 U-Clips (CL1-0022) at these locations. See step 9.



Install #10 U-Clip (CL1-0022) over existing factory holes.

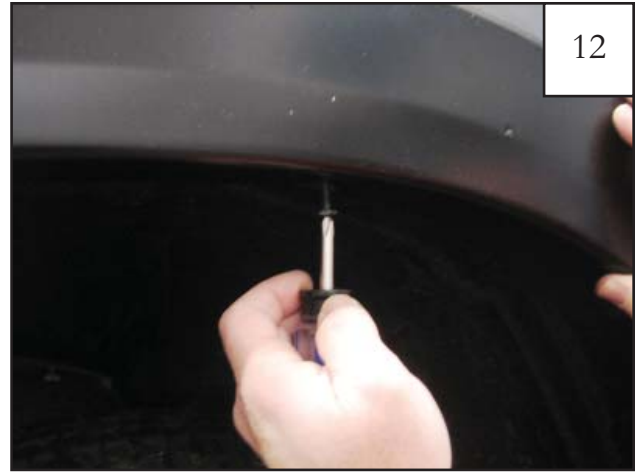


Supplied screws locations.



11

PLASTIC BUMPER ONLY: Additional supplied screw locations.



12

Hold flare to vehicle and start the supplied #8x3/4" Washer Panhead Screws (SW1-0056) with a Phillips screwdriver at locations show in steps 10 & 11. *Do not tighten.*



13

2011 Models Only (Ignore Spacer for other model years, just install screw): For rearmost lower factory screw location, slide factory screw through hole in flare, install supplied Nylon Spacer (SP1-0002) over factory screw, and start factory screw with an 8mm Socket Wrench. *Do not tighten.*



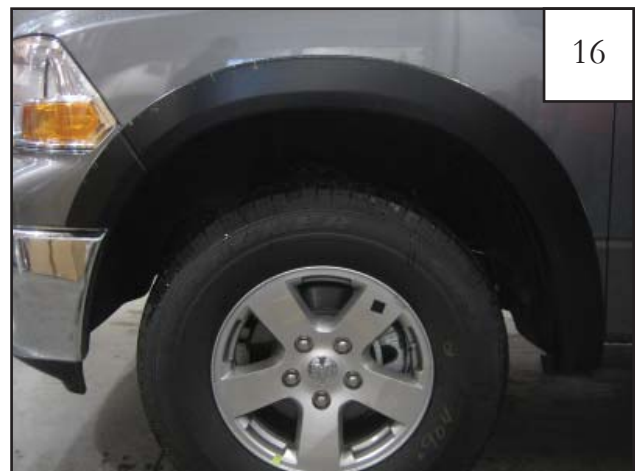
14

METAL BUMPER ONLY: Press firmly on flare and tighten all screws.



15

PLASTIC BUMPER ONLY: Press firmly on flare and tighten all screws.



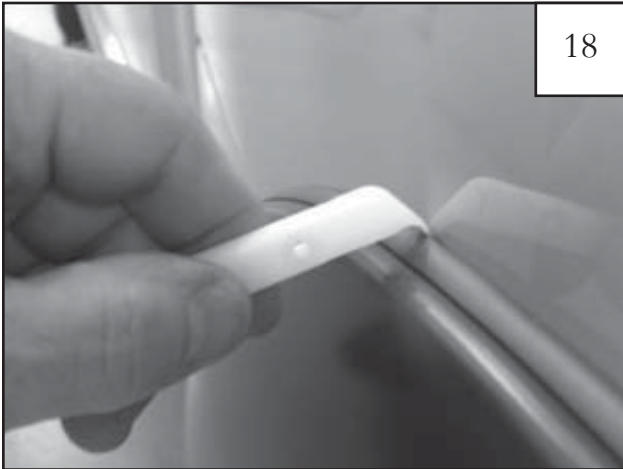
16

METAL BUMPER ONLY: Completed front flare installation.



PLASTIC BUMPER ONLY: Completed front flare installation.

Edge Trim Tool Procedures:



Using supplied Edge Trim Tool (ET1-0002), seat Wiper Style Edge Trim against vehicle by hooking curved end under edge trim at one end of flare. Next, slide around outer edge of flare to the other end.



Using flat end of supplied Edge Trim Tool (ET1-0002), seat edge trim against flare by inserting straight end between edge trim and flare at one end. Next, slide around entire edge to the other end.