

# Chevy Colorado

Rear Pair # 41028



## TOOLS FOR EASY INSTALLATION

- Utility Knife or Scissors (for Edge Trim)
- Screw Driver or Mallet

ITEM No.	COMPONENT	QTY.
1	Left Rear Flare	1
2	Right Rear Flare	1
3	Edge Trim	178"
4	Plastic Retainer	12



## Step 1: Prior to Installation

- A) **Fit:** Verify that the parts are correct.
- B) **Painting:** (Optional) if paint is desired it must be done prior to installing flares on the vehicle clean outer surface with a good grade degreaser. **DO NOT USE LACQUER THINNER OR ENAMEL REDUCER AS A DEGREASER.** Wipe outer surface thoroughly with a tack rag prior to paint. Paint flares using a high quality enamel, or polyurethane automotive paint. (Application of a primer coat is optional) If painting edge trim (not recommended), use a flex additive.
- C) **DO NOT USE:** Loctite, SuperGlue, or similar products on the hardware or the flares.

## FLARE INSTALLATION PROCEDURES

### Step 2: Preparing the Work Area

- A) Using a clean, damp towel, clean the areas of the vehicle to which the fender flares will be installed.
- B) Inspect the vehicle for damage before installation of fender flares.
- C) Remove factory installed mudflaps, trim pieces, fasteners, and molding when necessary.

### Step 3: Edge Trim Installation (See Illustration #1)

- A) Peel two to three inches of red vinyl backing away from edge trim tape. Applying the adhesive side of the edge trim to the inner side of the flare, affix the edge trim to the top edge of the flare (the portion that comes in contact with the vehicle. Leave a small overhang (approximately 1/4") to be trimmed once edge trim installation is complete.  
(See illustration #1)
- B) Press edge trim into place along the top edge of the flare in one-foot increments, pulling red vinyl backing free as you continue to work your way around the top edge of the flare.
- C) After edge trim is in place, trim ends flush.

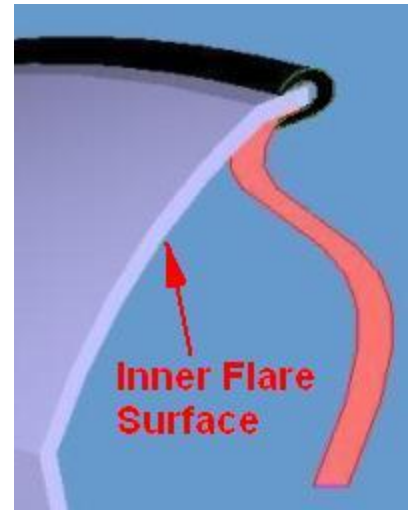
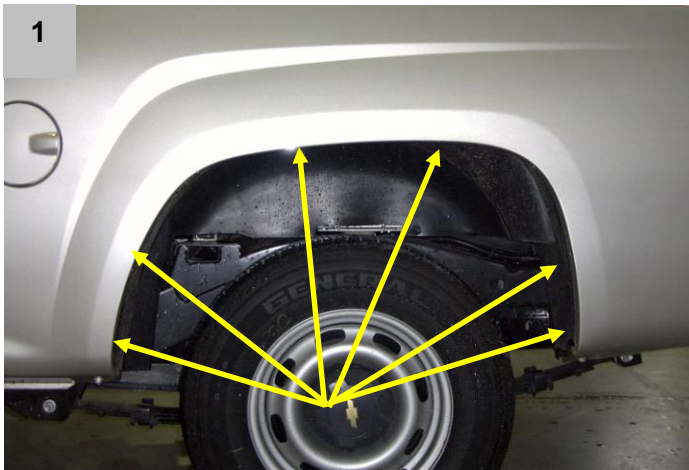


Illustration #1

### Step 4: Rear Flare Installation (See Images #1 through #4)



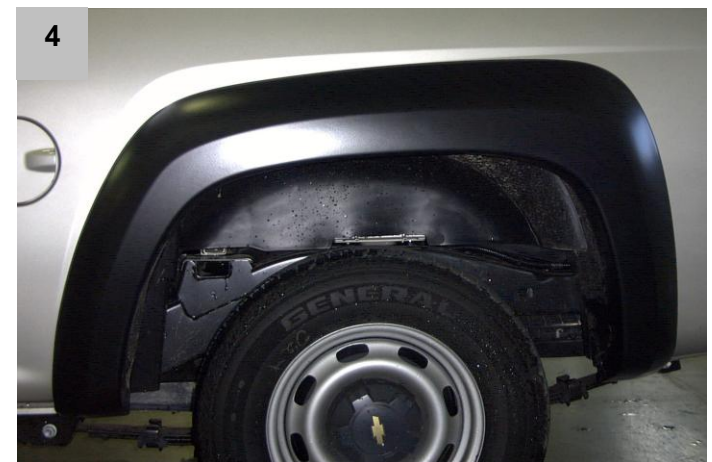
There are six factory holes located at intervals along the edge of the wheel well that will be used to attach the flare.



Using moderate pressure, hold the Rear Flare in place on the fender, aligning the holes in the flare with the holes in the fender. Starting with the two middle holes, insert a plastic retainer into each hole.



With your thumb, the handle of a screw driver, or a mallet, gently press or tap the head of the plastic retainer until seated.



Continue until all six supplied plastic retainers have been inserted through the holes in the flare and into the holes in the fender.