



# Toyota Pocket Style® Fender Flares Set of 4

Set Part #30918-XX

Rev-6 10/21/2014

## STEP 1 – PRIOR TO INSTALLATION

- A) Bushwacker only** approves installing the flares according to these written instructions with the hardware provided. **WARNING:** Failure to install according to these instructions will invalidate the warranty. This includes, but is not limited to using alternative installation methods, hardware, or materials. **DO NOT USE:** Loctite, SuperGlue, or similar products on the hardware or the flares.
- B) Fit:** Verify the fit of the flares to vehicle. (Some filing, sanding, or cutting may be necessary to ensure proper fit).
- C) Painting:** (Optional) if paint is desired it must be done prior to installing flares on vehicle. Clean outer surface with a good grade degreaser. **DO NOT USE LACQUER THINNER OR ENAMEL REDUCER AS A DEGREASER.** Wipe outer surface thoroughly with a tack rag prior to paint. Application of plastic adhesion promoter for ABS plastic as per your paint system manufacturer's recommendations is required. Paint flares using a high quality enamel, or polyurethane automotive paint. If painting edge trim (not recommended), use a flex additive.
- D) Performance:** Using larger Tires may increase the area required to turn the vehicle. Some Tire/Rim combinations may require lowering bump stops and or installing steering stops to prevent tire from contacting flare.
- E) Exhaust System:** Modifications may be necessary to maintain a minimum 4" clearance between flares and exhaust pipes. (Exhaust gases should not vent directly onto flares)
- F) Metal Protection:** All exposed fasteners and bare metal should be treated with rust resistant paint **BEFORE** installing flares. Spray inner fender wells with undercoating **AFTER** flare attachments have been completed.
- G) Decals:** Flares may interfere with existing decals on vehicle. If you wish, remove decals prior to installation of flares.

## TOOLS FOR EASY INSTALLATION:

- Utility Knife
- #2 Phillips Screwdriver
- Flathead Screwdriver
- #2 Phillips Bit
- Socket Wrench
- 10mm Socket
- Soft Wiping Cloth

## LIMITED LIFETIME WARRANTY AGAINST ANY MANUFACTURING DEFECTS

- To claim a warranty, you must provide Proof of Purchase.

## Included in Hardware Kit:

- |    |   |    |   |    |   |    |   |    |  |    |   |    |   |
|----|---|----|---|----|---|----|---|----|--|----|---|----|---|
| 1. |  | 2. |  | 3. |  | 4. |  | 5. |  | 6. |  | 7. |  |
|    | SW1-0036,<br>M6-.3 x 20mm Hex<br>Magni Black Screw,<br>34 pcs                       |    | RV1-P009,<br>8x15x20mm<br>Retainer,<br>2 pcs  |    | GP1-0005,<br>Large Wiper Style<br>Edge Trim,<br>324 inches                          |    | ET1-0002,<br>Edge Trim Tool,<br>1 pc  |    | SW1-0067,<br>5/16 x 18 x 3/8"<br>SS Torx Screw,<br>34 pcs                            |    | WA1-0012,<br>.320 x.700 x.03<br>SS Washer,<br>34 pcs                                  |    | NU1-0019,<br>5/16-18 Jam Fin.<br>Nylock Nut,<br>34 pcs                                |
| 8. |  |    |   |    |   |    |   |    |  |    |   |    |   |
|    | SW1-0052,<br>T-45 Torx Bit,<br>1 pc   |    |   |    |   |    |   |    |  |    |   |    |   |

## Components List:



Driver Side x1

Passenger Side x1



Driver Side x1

Passenger Side x1



Brackets x2

*If your flares already have the edge trim and pocket hardware installed, skip to Front Flare Installation Step 4.*

### EDGE TRIM INSTALLATION

A. Peel two to three inches of red vinyl backing away from Edge Trim (GP1-0005) tape. Applying the adhesive side of the edge trim to the inner side of the flare, affix the edge trim to the top edge of the flare (the portion that comes in contact with the vehicle).

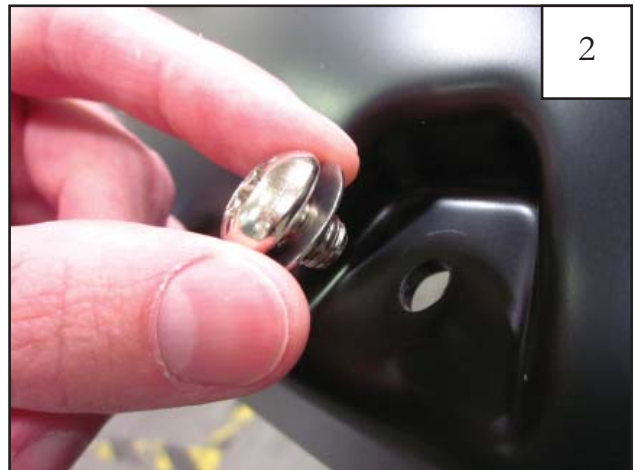
B. Press edge trim into place along the top edge of the flare in one-foot increments, pulling red vinyl backing free as you continue to work your way around the top edge of the flare.



### Pocket Hardware Installation Procedures:



Put a Washer (WA1-0012) on each Bolt (SW1-0059).



Put each Bolt/Washer combination through a pocket hole in the flare, Bolt head and Washer on the outside.



Place a Nut (NU1-0019) over the end of each Bolt and tighten, using a 1/2" wrench for the Nut and the supplied Torx Bit (SW1-0052) for the Bolt. Repeat for remaining pockets.

## Front Flare Installation Procedures (Driver's Side):



Using a 10mm socket, remove two factory fasteners from front of wheel well.



Using a 10mm socket, remove two factory screws from factory mud guard as shown.



Remove push retainer from underside of factory mud guard. Remove Mud Guard from Vehicle.



Using two supplied 20mm Hex Screws (SW1-0036), attach bracket to factory holes with a 10mm socket.



8

Place flare on fender, aligning holes with clips on the bracket. Start two supplied 20mm Hex Screws (SW1-0036) through two holes on the top of the flare and into clips.



9

Start three supplied 20mm Hex Screws (SW1-0036) through three rear holes in flare and into factory holes in rear of wheel well.



10

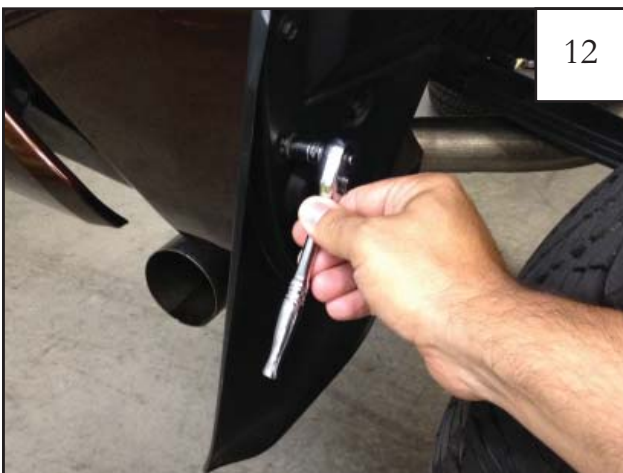
Start two supplied 20mm Hex Screws through forward most holes in flare and into factory hole locations.



11

Ensure flare is properly positioned and tighten all screws. (Repeat for other side of vehicle)  
Installation Complete.

## Rear Flare Installation Procedures (Passenger Side):



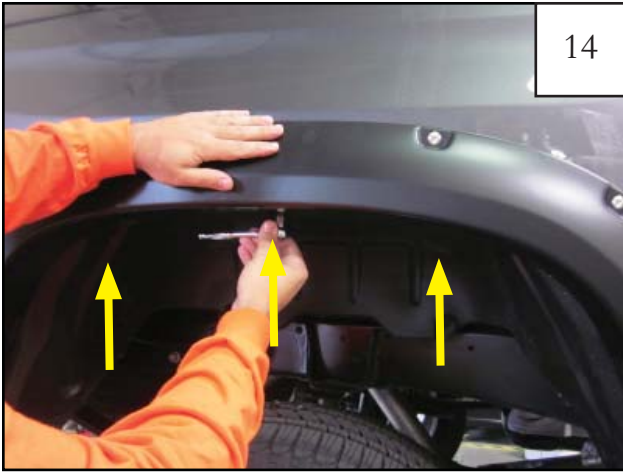
12

Using a socket wrench with a 10mm socket, factory screw second from the top of the mud guard.



13

Remove push retainer from underside of factory mud guard and remove mud flap.



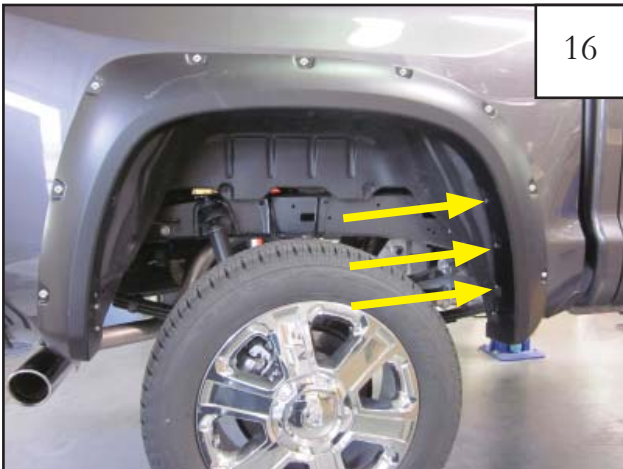
14

Hold the flare firmly on the fender. Start three supplied 20mm Hex Screws (SW1-0036) through the top center holes of the flare and into factory holes in fender.



15

Start two supplied 20mm Hex Screws through the rearward most holes of flare and into the factory hole in fender.



16

Using 10mm socket, start three supplied 20mm Hex Screws through the forward most holes of flare and into factory holes in fender.



17

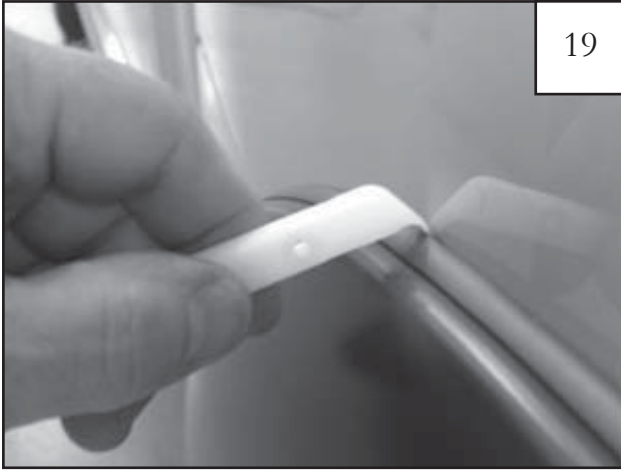
Install supplied Push Retainer (RV1-P009) into factory hole on underside of flare.



18

Ensure flare is properly positioned and tighten all screws. (Repeat for other side of vehicle)  
Installation complete.

## Edge Trim Tool Procedures:



Using supplied Edge Trim Tool (ET1-0002), seat edge trim against vehicle by hooking curved end under edge trim at one end of flare. Next, slide around outer edge of flare to the other end.



Using flat end of supplied Edge Trim Tool (ET1-0002), seat edge trim against flare by inserting straight end between edge trim and flare at one end. Next, slide around entire edge to the other end.