

Toyota Tundra

B-Cab, D-Cab, CrewMax

Set Part # 30909



Step 1:

Prior to Installation:

- A) Bushwacker only approves installing the flares according to these written instructions with the hardware provided. **WARNING:** Failure to install according to these instructions will invalidate the warranty. This includes, but is not limited to using alternative installation methods, hardware, or materials. **DO NOT USE:** Loctite, SuperGlue, or similar products on the hardware or the flares.
- B) **Fit:** Verify the fit of the flares to vehicle. **(Some filing, sanding, or cutting may be necessary to ensure proper fit).**
- C) **Painting:** (Optional) if paint is desired it must be done prior to installing flares on the vehicle clean outer surface with a good grade degreaser. **DO NOT USE LACQUER THINNER OR ENAMEL REDUCER AS A DEGREASER.** Wipe outer surface thoroughly with a tack rag prior to paint. Paint flares using a high quality enamel, or polyurethane automotive paint. (Application of a primer coat is optional) If painting edge trim (not recommended), use a flex additive.
- D) **Performance:** Using larger Tires may increase the area required to turn the vehicle. Some Tire/Rim combinations may require lowering bump stops and or installing steering stops to prevent tire from contacting flare.
- E) **Exhaust System:** Modifications may be necessary to maintain a minimum 4" clearance between flares and exhaust pipes. (Exhaust gases should not vent directly onto flares)
- F) **Metal Protection:** All exposed fasteners and bare metal should be treated with red oxide primer BEFORE installing flares. Spray inner fender wells with undercoating AFTER flare attachments have been completed.

TOOLS FOR EASY INSTALLATION

- Socket Wrench
- 10mm Socket
- #2 Phillips Screwdriver
- Flat Head Screwdriver
- Grease Pencil

HARDWARE INCLUDED IN KIT

- 6- S Clip (CL1-0005)
- 324" - Edge Trim (GP1-0005)
- 6 - 1" Black Tab (MT1-0002)
- 2 - U Spring Nut (NU1-0013)
- 18 - Hex Magni Screw (SW1-0036)
- 6 - 5/16 Truss Hd Screw (SW1-0050)
- 2 - 3/4" Truss Tap Screw (SW1-0057)

FLARE INSTALLATION PROCEDURES

Step 2: Edge Trim Installation (See Illustration #1)

- A) Peel two to three inches of red vinyl backing away from edge trim tape. Applying the adhesive side of the edge trim to the inner side of the flare, affix the edge trim to the top edge of the flare (the portion that comes in contact with the vehicle). **See Illustration #1**
- B) Press edge trim into place along the top edge of the flare in one-foot increments, pulling red vinyl backing free as you continue to work your way around the top edge of the flare.



Illustration #1

Step 3: Front Flare Installation (See Photos #1 through #12)



1

Using a Phillips screwdriver, remove plastic fastener from front of wheel well. Note: For the Limited version, a flat head screw driver will be needed.



2

Using a socket wrench with a 10mm socket, remove top screw from factory mud guard as shown. Note: Do not remove Mudflap. This screw hole will be used for installing flare.



3

Using a socket wrench with 10mm socket, remove screw from underside of factory mud guard. Note: If vehicle is equipped with running boards, running boards may need to be removed in order to access this screw. Do not remove Mudflap. This screw hole will be used for installing flare.



4

Hold the flare firmly on the fender. Starting with the second hole from the front of the flare, mark three clip locations with a grease pencil.



5

Clip locations.



6

Remove flare from fender. Center a supplied Black Tab (MT1-0002) over each mark made in Step 4.



Slide a supplied "S" Clip (CL1-0005) over each Tab.



Slide a supplied "U" Spring Nut (NU1-0013) over the fender lip, aligning with forward-most hole in fender. Note: For the Limited version, skip this



Replace flare on fender, aligning holes with holes in clips. Start three supplied Serrated-Flange Screws (SW1-0050) through three holes in flare and into "S" Clips installed in Step 7.



Start three supplied Hex Magni (SW1-0036) Screws through three rear holes in flare into the rear of wheel well. The bottom two holes should align with the screw holes in the mudflap. (refer to steps 2 &3).



Hex Magni Screw (SW1-0036) fastening locations. Bottom two screw hole locations should fasten through flare and mudflap.



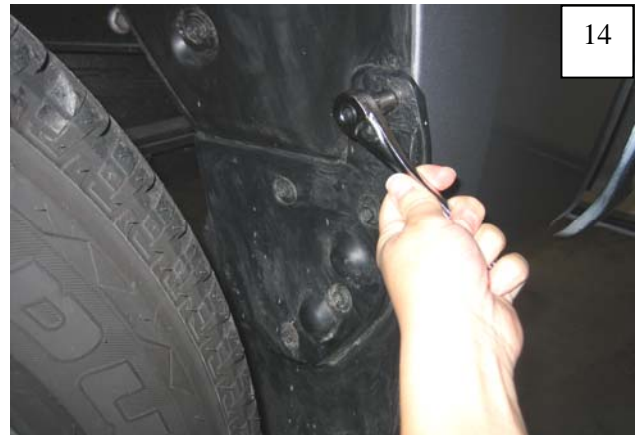
Start a supplied Truss Head Screw (SW1-0057) through forward-most hole in flare and into "U" Clip installed in Step 8. Note: For the Limited version, install this screw directly into hole in fender. Ensure flare is properly positioned and tighten all screws.

Step 4: Rear Fender Flare Installation (See Photos #13 through #17)



13

Using a socket wrench with a 10mm socket, remove lower screw from front of rear wheel well as shown.



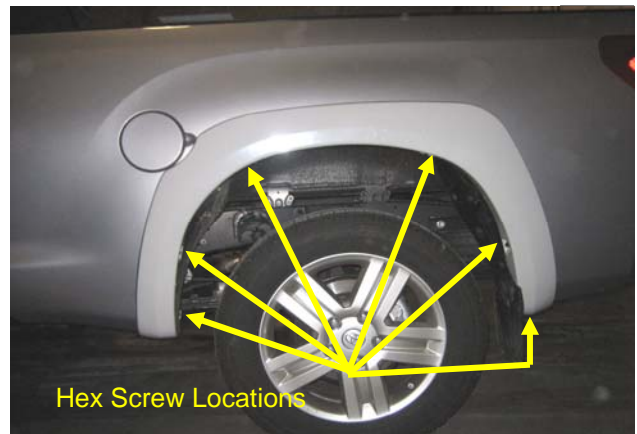
14

Using a socket wrench with a 10mm socket, remove top screw from factory mud guard as shown. *Note: Do not remove Mudflap. This screw hole will be used for installing flare.*



15

Using a socket wrench with 10mm socket, remove screw from underside of factory mud guard. *Note: Do not remove Mudflap. This screw hole will be used for installing flare.*



Hex Screw Locations

Hold the flare firmly on the fender. Start a supplied Hex Magni Screw (SW1-0036) through each hole in flare and into hole in fender (six places). Bottom two rear screw hole locations should fasten through flare and mudflap.



17

Ensure Flare is properly positioned and tighten all screws.