



Toyota Highlander Fronts

Set Part #30029-02

STEP 1 – PRIOR TO INSTALLATION

- A) Bushwacker only** approves installing the flares according to these written instructions with the hardware provided. **WARNING:** Failure to install according to these instructions will invalidate the warranty. This includes, but is not limited to using alternative installation methods, hardware, or materials. **DO NOT USE:** Loctite, SuperGlue, or similar products on the hardware or the flares.
- B) Fit:** Verify the fit of the flares to vehicle. (Some filing, sanding, or cutting may be necessary to ensure proper fit).
- C) Painting:** (Optional) if paint is desired it must be done prior to installing flares on vehicle. Clean outer surface with a good grade degreaser. **DO NOT USE LACQUER THINNER OR ENAMEL REDUCER AS A DEGREASER.** Wipe outer surface thoroughly with a tack rag prior to paint. Application of plastic adhesion promoter for ABS plastic as per your paint system manufacturer's recommendations is required. Paint flares using a high quality enamel, or polyurethane automotive paint. If painting edge trim (not recommended), use a flex additive.
- D) Performance:** Using larger Tires may increase the area required to turn the vehicle. Some Tire/Rim combinations may require lowering bump stops and or installing steering stops to prevent tire from contacting flare.
- E) Exhaust System:** Modifications may be necessary to maintain a minimum 4" clearance between flares and exhaust pipes. (Exhaust gases should not vent directly onto flares)
- F) Metal Protection:** All exposed fasteners and bare metal should be treated with rust resistant paint **BEFORE** installing flares. Spray inner fender wells with undercoating **AFTER** flare attachments have been completed.
- G) Decals:** Flares may interfere with existing decals on vehicle. If you wish, remove decals prior to installation of flares.



TOOLS FOR EASY INSTALLATION:

- 3mm Allen Wrench
- 10mm Socket Wrench
- #2 Phillips Driver
- Awl
- Pry Tool

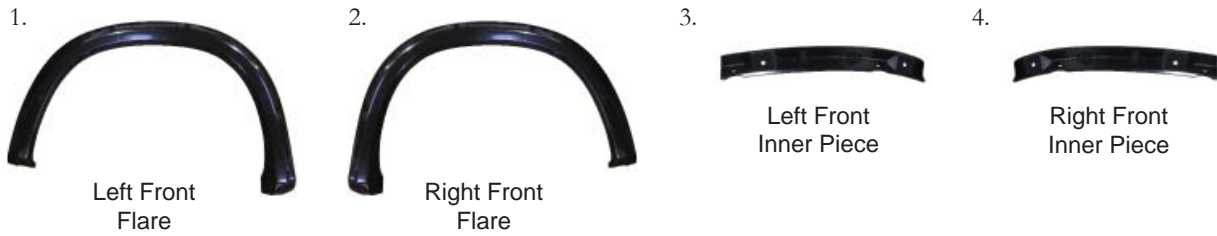
LIMITED LIFETIME WARRANTY AGAINST ANY MANUFACTURING DEFECTS

- To claim a warranty, you must provide Proof of Purchase.

Included in Hardware Kit

- | | | | | | | |
|--|--|--|--|---|--|--|
| 1.  | 2.  | 3.  | 4.  | 5.  | 6.  | 7.  |
| CL1-0022,
#10 "U" Clip,
8 pcs | MT1-0014,
1" x 1.5" x .01"
Black Tab,
4 pcs | SW1-0058,
#10 x 5/8" Phillips
SS Truss Screw,
8 pcs | SW1-0057,
#14 x 3/4" Phillips
Truss Tap Screw,
4 pcs | RV1-P001,
1/4" Black Nylon
Retainer,
2 pcs | ET1-0002,
Edge Trim Tool,
1 pc | GP1-0001,
Small Wiper Style
Edge Trim,
158 in |

Component List



STEP 2 - EDGE TRIM INSTALLATION

- A) Peel two to three inches of red vinyl backing away from Edge Trim (GP1-0001) tape. Applying the adhesive side of the edge trim to the inner side of the flare, affix the edge trim to the top edge of the flare (the portion that comes in contact with the vehicle).
- B) Press edge trim into place along the top edge of the flare in one-foot increments, pulling red vinyl backing free as you continue to work your way around the top edge of the flare.



Front Flare Installation Procedures (Driver's Side)



Using a 10mm socket wrench, remove factory bolt at front underside of wheel well. *Save for reinstallation.*



Factory bolt location.



Using a pry tool, remove two plastic factory fasteners.



Factory fastener locations.



Using a 3 mm Allen Wrench, remove two factory screws from rear of wheel well. *Save for reinstallation.*



Two factory screw locations.



Using a pry tool, remove plastic factory fastener at lower rear of wheel well.



Use these two locations for the next five steps.



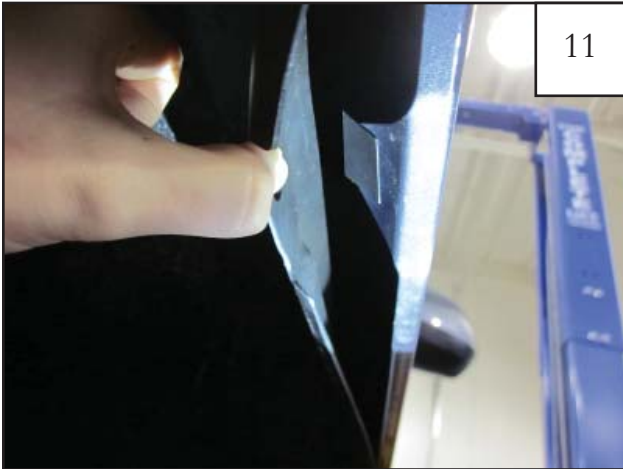
9

Using a pry tool, remove two plastic factory fasteners. Reference Step 8 for locations.



10

Pull wheel well liner out from behind fender lip.



11

Install Tab (MT1-0014) over factory hole locations behind wheel well liner. Reference Step 8 for locations.



12

Slide Clip (CL1-0022) over factory hole locations behind wheel well liner over tab installed in previous step. Two locations. Reference Step 8 for locations.



13

Using awl to poke hole through Tab using Clip installed in Step 12 as a guide. With Clip installed, tuck liner back in. Two locations.



14

Identify left side and right side Front Inner Pieces. Parts are marked with an "L" for left side and an "R" for right side.



15

Install Clips (CL1-0022) at two locations on Front Inner Piece.



16

Two locations.



17

Hold front flare inner piece in wheel well with angled hole locations aligned with clips installed on wheel well lip in Step 12. Using a #2 Phillips Screwdriver, install Screws (SW1-0058) through front flare inner piece, through wheel well liner, and into Clip. Make sure that the corners of the Front Inner Piece are mounted flush with the sheet metal.



18

Hold flare to vehicle. Start Screws (SW1-0058) through two uppermost locations with #2 Phillips Screwdriver. *Do not tighten.*



19

Using a #2 Phillips Screwdriver, install Screws (SW1-0057) through two frontward locations inside wheel well. *Do not tighten.*



20

Start factory screws removed in Step 5 using a 3mm Allen Wrench. *Do not tighten.*



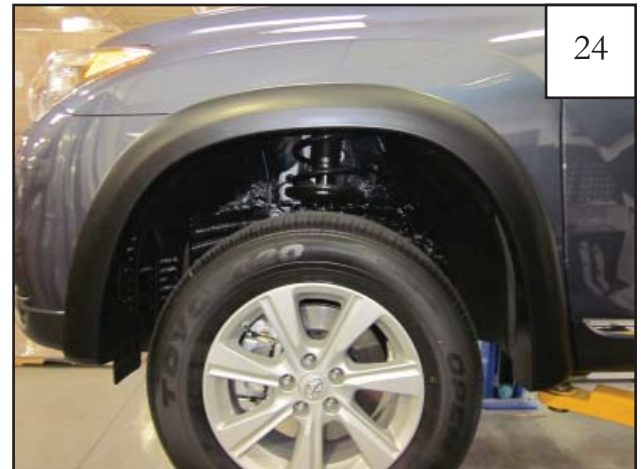
Using a 10 mm socket wrench, reinstall factory bolt removed in Step 1 by threading through flare.



Install a Tuflock (RV1-P001) through flare and into sheet metal of wheel well where rear and lowermost plastic factory fastener was removed in Step 7.

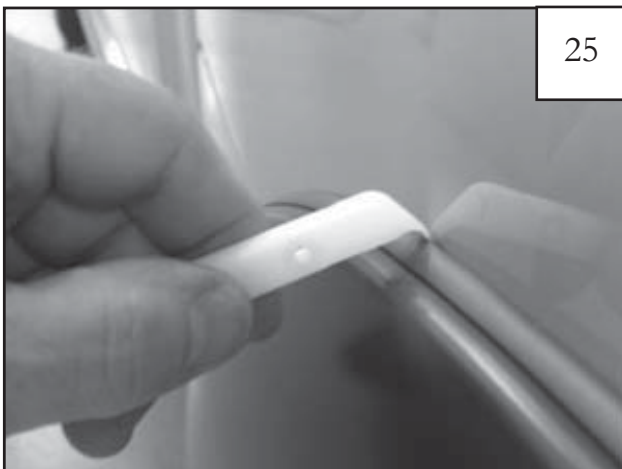


Once all hardware is started, check flare for proper positioning. Apply pressure at each fastening point and tighten all screws and bolts.



Completed Front Flare installation.

Edge Trim Tool Procedures



Using supplied Edge Trim Tool (ET1-0002), seat edge trim against vehicle by hooking curved end under edge trim at one end of flare. Next, slide around outer edge of flare to the other end.



Using flat end of supplied Edge Trim Tool (ET1-0002), seat edge trim against flare by inserting straight end between edge trim and flare at one end. Next, slide around entire edge to the other end.

Flare Height & Tire Coverage (Passenger's Side)

