



# Toyota Tundra, B- & D-Cab, CrewMax Front Pair

Set Part #30023-02

## STEP 1 – PRIOR TO INSTALLATION

- A)** Bushwacker only approves installing the flares according to these written instructions with the hardware provided. **WARNING:** Failure to install according to these instructions will invalidate the warranty. This includes, but is not limited to using alternative installation methods, hardware, or materials. **DO NOT USE:** Loctite, SuperGlue, or similar products on the hardware or the flares.
- B) Fit:** Verify the fit of the flares to vehicle. (Some filing, sanding, or cutting may be necessary to ensure proper fit).
- C) Painting:** (Optional) if paint is desired it must be done prior to installing flares on vehicle. Clean outer surface with a good grade degreaser. **DO NOT USE LACQUER THINNER OR ENAMEL REDUCER AS A DEGREASER.** Wipe outer surface thoroughly with a tack rag prior to paint. Application of plastic adhesion promoter for ABS plastic as per your paint system manufacturer's recommendations is required. Paint flares using a high quality enamel, or polyurethane automotive paint. If painting edge trim (not recommended), use a flex additive.
- D) Performance:** Using larger Tires may increase the area required to turn the vehicle. Some Tire/Rim combinations may require lowering bump stops and or installing steering stops to prevent tire from contacting flare.
- E) Exhaust System:** Modifications may be necessary to maintain a minimum 4" clearance between flares and exhaust pipes. (Exhaust gases should not vent directly onto flares)
- F) Metal Protection:** All exposed fasteners and bare metal should be treated with rust resistant paint **BEFORE** installing flares. Spray inner fender wells with undercoating **AFTER** flare attachments have been completed.
- G) Decals:** Flares may interfere with existing decals on vehicle. If you wish, remove decals prior to installation of flares.



## TOOLS FOR EASY INSTALLATION:

- Socket Wrench
- 10mm Socket
- 1/2" Socket
- #2 Phillips Screwdriver
- Grease Pencil
- Awl (Optional)

## LIMITED LIFETIME WARRANTY AGAINST ANY MANUFACTURING DEFECTS

- To claim a warranty, you must provide Proof of Purchase.

## Included in Hardware Kit

- |  |  |   |  |  |  |  |  |
|--|--|---|--|--|--|--|--|
| 1. <br>SW1-0036,<br>M6-.3 x 20mm Hex<br>Magni Black Screw,<br>6 pcs | 2. <br>CL1-0005,<br>Dacromet "U"<br>Spring Clip,<br>6 pcs | 3. <br>GR1-0001,<br>#14 Screw Nylon<br>Grommet,<br>2 pcs       | 4. <br>SW1-0050,<br>10 x 5/16 Phillips<br>Truss Screw,<br>6 pcs | 5. <br>SW1-0059,<br>5/16 x 18 x 3/8"<br>SS Torx Screw,<br>14 pcs | 6. <br>WA1-0012,<br>.320 x .700 x .03<br>SS Washer,<br>14 pcs | 7. <br>NU1-0019,<br>5/16-18 Jam Fin.<br>Nylock Nut,<br>14 pcs |  |
| 8. <br>MT1-0002,<br>1" x 1" x .017"<br>Black Tab,<br>6 pcs          | 9. <br>SW1-0052,<br>T-45 Torx Bit,<br>1 pc                | 10. <br>GP1-0005,<br>Large Wiper Style<br>Edge Trim,<br>134 in | 11. <br>ET1-0002,<br>Edge Trim Tool,<br>1 pc                    |  |  |  |  |

## STEP 2 - EDGE TRIM INSTALLATION

- A) Peel two to three inches of red vinyl backing away from Edge Trim (GP1-0005) tape. Applying the adhesive side of the edge trim to the inner side of the flare, affix the edge trim to the top edge of the flare (the portion that comes in contact with the vehicle).
- B) Press edge trim into place along the top edge of the flare in one-foot increments, pulling red vinyl backing free as you continue to work your way around the top edge of the flare.



## Pocket Hardware Installation Procedures



Put a Washer (WA1-0012) on each Bolt (SW1-0059).



Put each Bolt through a pocket hole in the flare, bolt head on the outside.

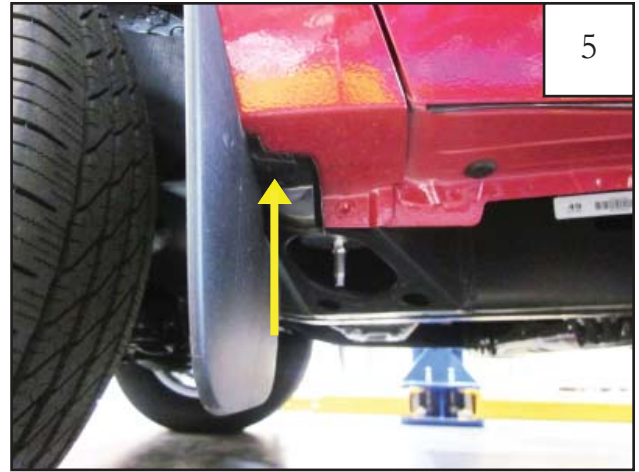


Place a Nut (NU1-0019) over the end of each Bolt and tighten, using a 1/2" wrench for the Nut and the supplied Torx Bit (SW1-0052) for the Bolt. Repeat for remaining pockets.

# Front Flare Installation Procedures (Driver's Side)



Remove three hex bolts from factory mud flap, using a 10mm socket.



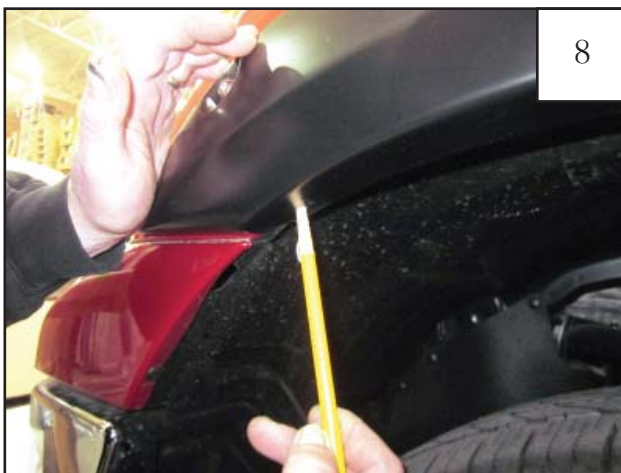
Remove one hex bolt from underside of mud flap using a 10mm socket. Discard mud flap



Start supplied Screw (SW1-0036) through top rear hole in flare and into factory hole in rear of wheel well. *Do not tighten.*



Screw (SW1-0036) location.



Hold front of the flare firmly on the fender. Mark three Clip (CL1-0005) locations using the holes in the flare as a guide.



Three marked Clip (CL1-0005) locations.



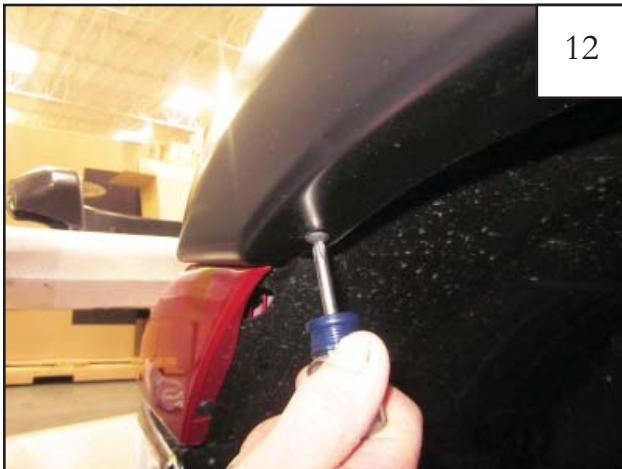
10

Pull flare outward to access the fender lip (with Screw [SW1-0036] still installed). Center a Tab (MT1-0002) over each mark made in Step 8.



11

Slide a Clip (CL1-0005) over each Tab (MT1-0002).



12

Align holes in flare with holes in Clips (CL1-0005). Start a supplied Screw (SW1-0050) through holes in flare and into each Clip (CL1-0005) installed in Step 11 in the order shown in Step 13. *If necessary, use an awl to locate holes in clips.*



13

Start Screw (SW1-0050) in location #1 first, then move to #2, and start in location #3 last.



14

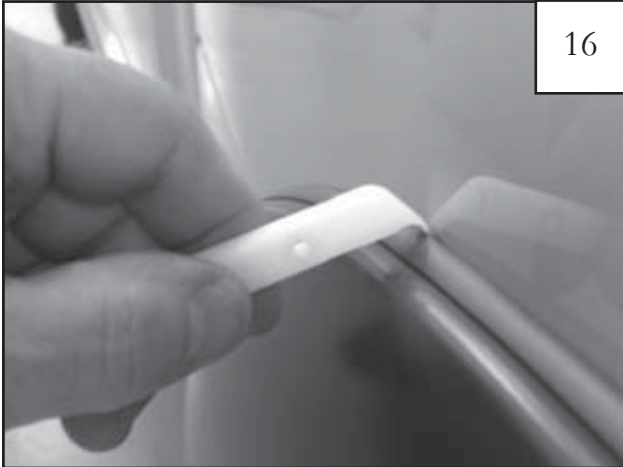
Start Screw (SW1-0036) through the three lower rear holes in flare and into factory holes in rear of wheel well.



15

Screw (SW1-0036) locations.

# Edge Trim Tool Procedures



Using supplied Edge Trim Tool (ET1-0001), seat edge trim against vehicle by hooking curved end under edge trim at one end of flare. Next, slide around outer edge of flare to the other end.



Using flat end of supplied Edge Trim Tool (ET1-0001), seat edge trim against flare by inserting straight end between edge trim and flare at one end. Next, slide around entire edge to the other end.