

Hummer H3

Set Part # 150900
Revision 1 01/06/10



Step 1:

Prior to Installation:

- A) Bushwacker only approves installing the flares according to these written instructions with the hardware provided. **WARNING:** Failure to install according to these instructions will invalidate the warranty. This includes, but is not limited to using alternative installation methods, hardware, or materials. **DO NOT USE:** Loctite, SuperGlue, or similar products on the hardware or the flares.
- B) **Fit:** Verify the fit of the flares to vehicle. **(Some filing, sanding, or cutting may be necessary to ensure proper fit).**
- C) **Painting:** (Optional) if paint is desired it must be done prior to installing flares on the vehicle clean outer surface with a good grade degreaser. **DO NOT USE LACQUER THINNER OR ENAMEL REDUCER AS A DEGREASER.** Wipe outer surface thoroughly with a tack rag prior to paint.
Paint flares using a high quality enamel, or polyurethane automotive paint. (Application of a primer coat is optional)
If painting edge trim (not recommended), use a flex additive.
- D) **Performance:** Using larger Tires may increase the area required to turn the vehicle. Some Tire/Rim combinations may require lowering bump stops and or installing steering stops to prevent tire from contacting flare.
- E) **Exhaust System:** Modifications may be necessary to maintain a minimum 4" clearance between flares and exhaust pipes.
(Exhaust gases should not vent directly onto flares)
- F) **Metal Protection:** All exposed fasteners and bare metal should be treated with red oxide primer BEFORE installing flares. Spray inner fender wells with undercoating AFTER flare attachments have been completed.
- G) **DECALS:** Flares may interfere with existing decals on vehicle. If you wish, remove decals prior to installation of flares.

TOOLS FOR EASY INSTALLATION:

- Socket wrench with 10mm socket
- #2 Phillips Stubby or Right-Angle Screwdriver
- Pry Tool or Flat Head Screwdriver
- Drill with 5/16" Bit
- Awl (Optional)
- Utility Knife
- Grease Pencil
- Rubber Mallet (Optional)
- Flashlight (Optional)

INCLUDED IN KIT:

- 1 Pair Front Fender Flares
- 1 Set Rear Fender Flares (3 pcs each)
- Edge Trim (270")
- #14 Truss Head Screws (20 each)
- #14 "U" Clips (20 each)
- Black Tabs (2 each)
- "S" Clips (2 each)
- Serrated Flange Screws (2 each)
- "C" Clips (8 each)
- Plastic Fasteners (6 each)

FLARE INSTALLATION PROCEDURES

Step 2: Edge Trim Installation (See Illustration #1)

- A) Peel two to three inches of red vinyl backing away from edge trim tape. Applying the adhesive side of the edge trim to the inner side of the flare, affix the edge trim to the top edge of the flare (the portion that comes in contact with the vehicle). **See Illustration #1**
- B) Press edge trim into place along the top edge of the flare in one-foot increments, pulling red vinyl backing free as you continue to work your way around the top edge of the flare.

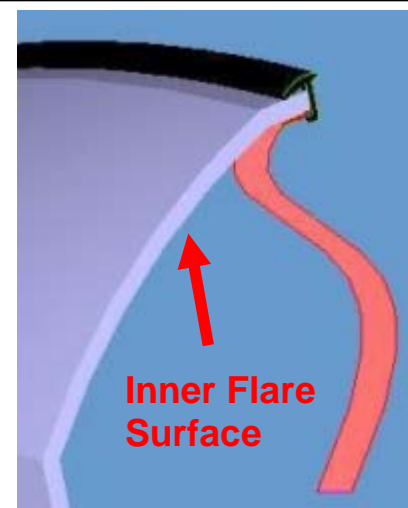


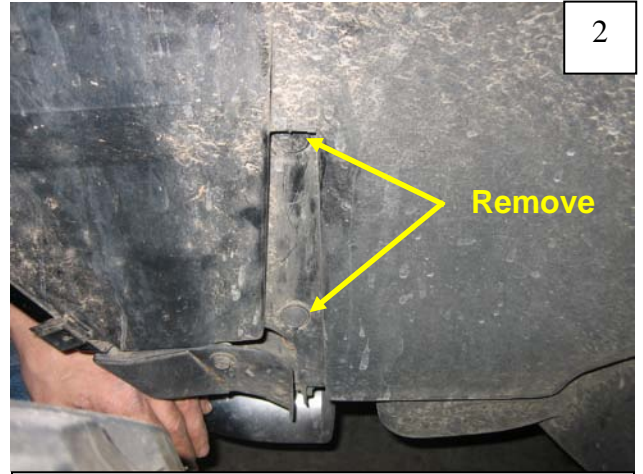
Illustration #1

Step 3: Front Flare Installation (See Photos #1 through #12)



1

Remove four factory fasteners from wheel well as shown, using a pry tool or flathead screwdriver. Discard.



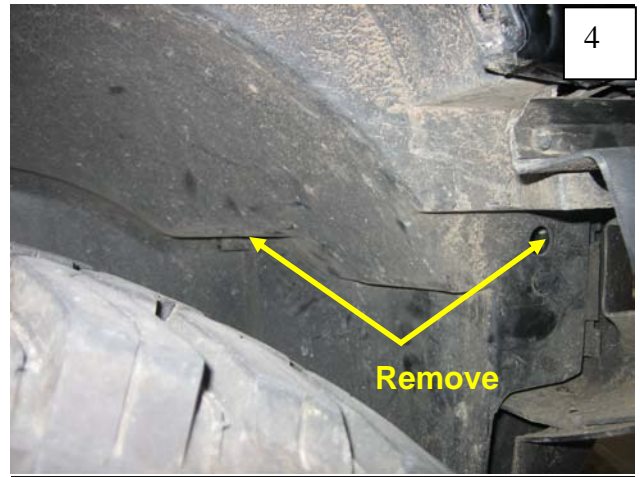
2

Remove two plastic fasteners from splash shield, retain for reinstallation. There will be seven plastic fasteners total.



3

Remove three plastic fasteners from splash shield, retain for reinstallation.



4

Remove two plastic fasteners from splash shield, retain for reinstallation.



5

Pull back splash shield. Slide four supplied #14 "U" Clips over factory holes in fender (factory fasteners removed in Step 1). Reinstall fasteners removed in Steps 2-4.

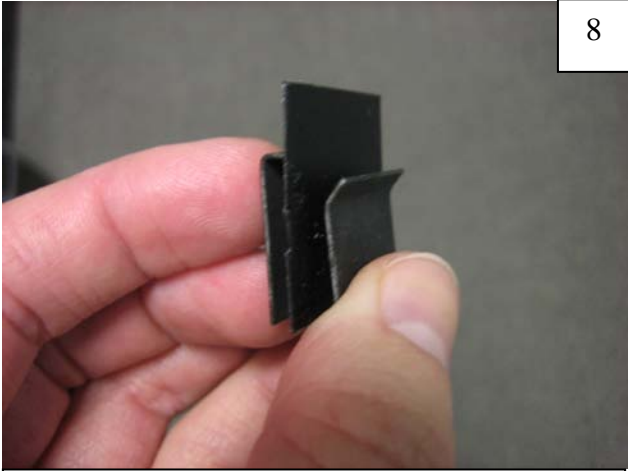


6

Position flare on fender, taking care to slide bottom rear of flare between rocker and factory fender flare.



Use a grease pencil to mark clip location at bottom rear of fender, using hole in flare as a guide. Remove flare from fender.



Peel paper backing from supplied Black Tab. Adhere tab to supplied "S" Clip.



Slide "S" Clip/Black Tab combination onto fender lip, centering on mark made in Step 7.



Reposition flare on fender, and starting at front, install four supplied #14 Truss-Head Screws through forward holes in flare and into "U" clips installed in Step 5.



Install a supplied Serrated-Flange Screw through lower rear hole in flare and into "S" Clip installed in Step 9. Use an awl to locate hole if needed.



Verify fit and tighten all screws.

Step 4: Rear Fender Flare Installation (See Photos #13 through #24)



13

Remove six factory fasteners from wheel well as shown, using a pry tool or flathead screwdriver. Discard.



14

Using a 10mm socket, remove two factory bolts from splash shield, retain for reinstallation. There will be five plastic fasteners total.



15

Using a 10mm socket, remove three factory bolts from splash shield, retain for reinstallation.



16

Pull back splash shield. Using a utility knife, trim notches in rear edge of bumper at three hole locations, trimming enough so that holes in supplied #14 "U" Clips align with factory holes.



17

Slide three supplied #14 "U" Clips over factory holes in fender (bumper trimmed in Step 16). Some additional trimming may be needed if holes in clips do not align with factory holes in bumper.



18

Slide three supplied #14 "U" Clips over top factory holes in fender (factory fasteners removed in Step 1). Reinstall fasteners removed in Steps 2-4.



19

Position Rear Flare Piece and Upper Flare Piece. Use four supplied "C" Clips to attached flare pieces.



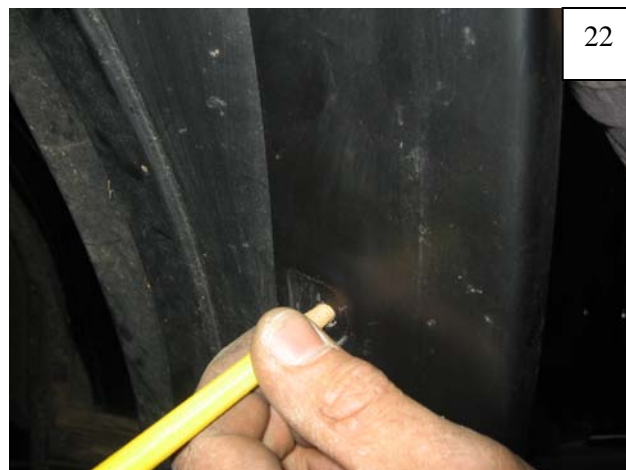
20

Position Rear/Upper Flare on fender, and starting at rear, install six supplied #14 Truss-Head Screws through holes in flare and into "U" clips installed in Steps 17-18.



21

Position Rear Door Piece on door, taking EXTRA care that the door piece is properly positioned. Door edge will require drilling. Carefully open door. It is helpful to have a second person assisting with this.



22

Use a grease pencil to mark three hole locations on door edge, taking care to maintain part position.



23

Remove Door Piece from door, and carefully drill three marked locations with a 5/16" drill bit.



24

Reposition Door Piece on door, and install three supplied plastic fasteners. If needed, use a rubber mallet to gently engage fasteners. Verify fit and tighten all screws on Rear Flares.