



MODEL 5200
Tire Repair Station

Installation, Operation
and Repair Parts
Information



TABLE OF CONTENTS

SAFETY INSTRUCTIONS	1
DEFINITIONS	1
SPECIFICATIONS	2
INSTALLATION INSTRUCTIONS	2
OPERATING INSTRUCTIONS	2
MAINTENANCE INSTRUCTIONS	2
REPAIR PARTS	3

SAFETY INSTRUCTIONS

- NEVER allow unauthorized personnel to operate this product.
- NEVER use this product for anything other than its intended use.
- THOROUGHLY train new employees in the proper use and care of this product.
- PROHIBIT unauthorized personnel from being in shop area while this product is in use.

DEFINITIONS

- **CAUTION:** Indicates a potentially hazardous situation, which if not avoided, may result in damage to property or minor personal injury.
- **HAZARD:** A source of potential injury to a person.
- **MAINTENANCE:** Those actions that preserve the correct and proper conditions under which the machine shall be used. This may include adjustment, replacement of wear items, lubrication and cleaning, but not modifications or repair of damage.
- **MAY:** This word is understood to be permissive.
- **MUST:** This word is understood to be mandatory.
- **OPERATION:** The correct and proper use of the machine as described in this manual.
- **SAFETY ALERT SYMBOL:** A symbol that indicates a potential personal safety hazard. It is composed of an equilateral triangle surrounding an exclamation point.
- **SHALL:** This word is understood to be mandatory.
- **SHOULD:** This word is understood to be advisory.
- **WARNING:** Indicates a potentially hazardous situation, which if not avoided, may result in death or serious personal injury.

CAUTION

- ◆ Before using this product, read and fully understand the operating instructions and all decals on the product. This is necessary to prevent injury to the operator and damage to the product.
- ◆ Use this product only for spreading and repairing tire casings. Do not use this product for any other purpose.
- ◆ Keep fingers and hands clear of spread hooks during tire spread.
- ◆ Do not use this product if it is visibly worn, distorted or damaged.
- ◆ Always wear appropriate eye protection.

SPECIFICATIONS

Tire Size:	17.50-10 four-ply to 16.00-24.5 twenty-ply
Max Spread:	24 inches (61 cm)
Dimensional data:	38.5 x 25 x 18 in (98 x 63.5 x 46 cm)
Weight:	180 lbs (81.6 kgs)

INSTALLATION

- 1) Uncrate spreader and remove wrappings and barrier material from air valves.
- 2) Inspect unit for damage in shipping.
- 3) Connect air line to inline filter at foot valve.

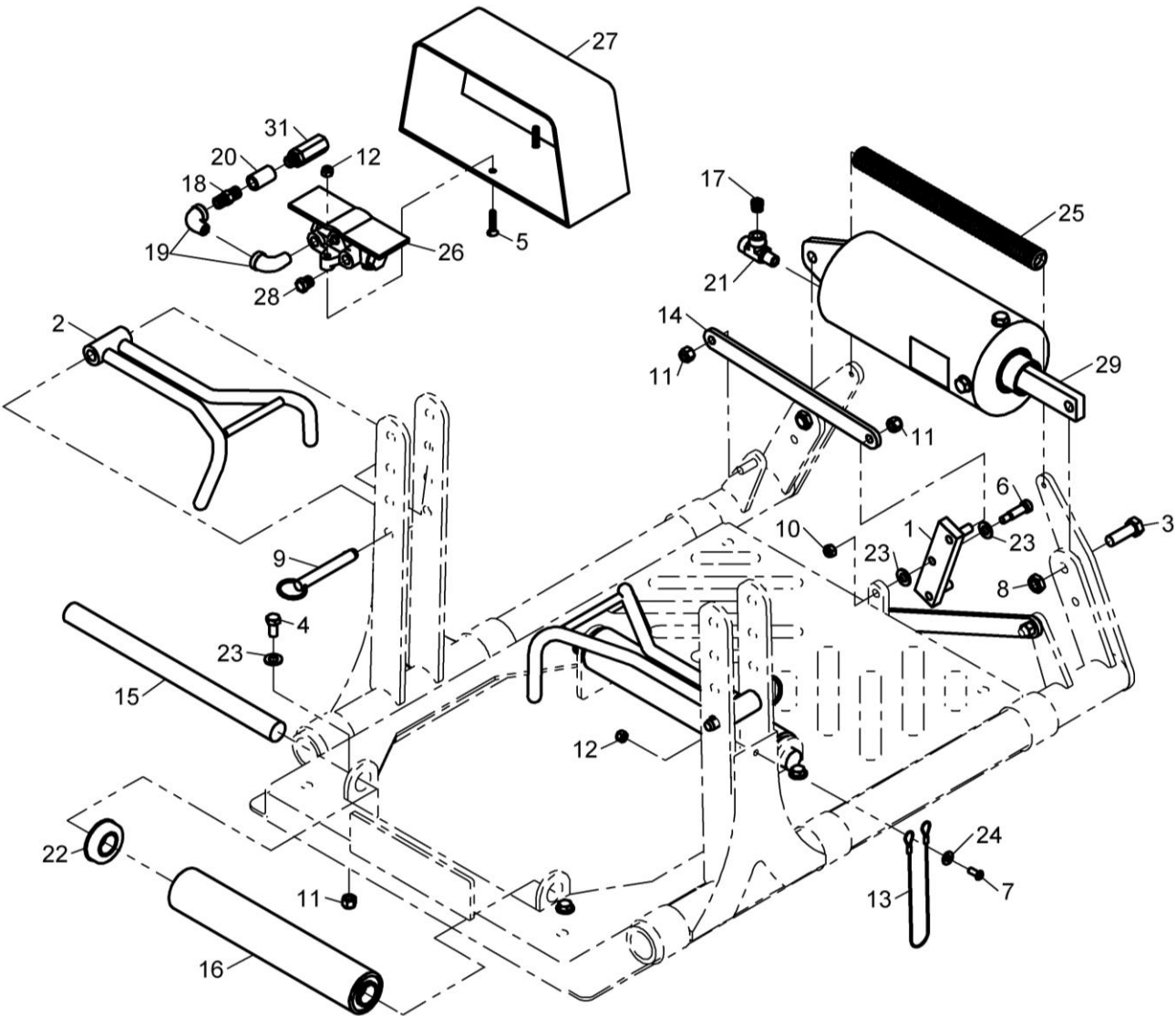
OPERATION

- 1) Roll tire onto support rollers.
- 2) Use detent pin to adjust hooks to proper level for tire size, hooks should slope slightly upward toward tire.
- 3) Use "Spread" foot pedal to spread tire. Valve will hold tire at desired spread width.
- 4) Use "Release" foot pedal to release spread.
- 5) When hooks are fully relaxed, move hooks out of tire and roll tire off spreader.

MAINTENANCE

Monthly: Lubricate the pivot points of spread hooks, spread arms and cylinder ends.

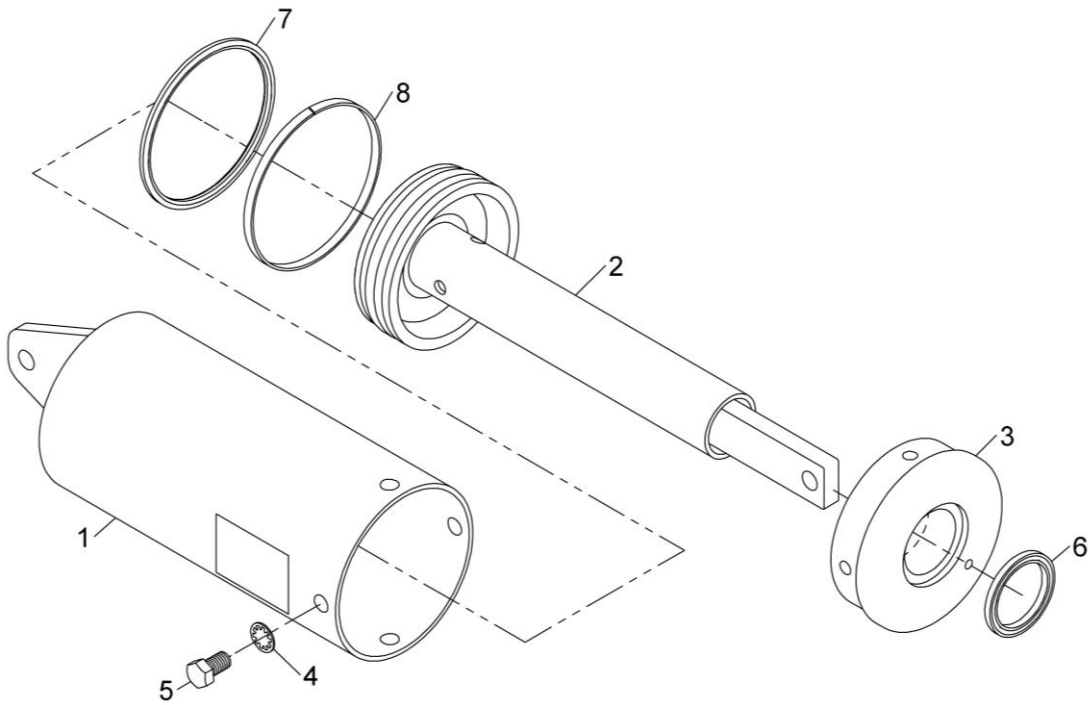
Every Six Months: Remove air cylinder cover plate, piston and rod. Clean thoroughly. Reassemble and add ½ cup of clean oil in rear of cylinder through pipe tee on end of cylinder.



Spreader Assembly

Spreader Assembly Components

ITEM	QTY	PART NO.	DESCRIPTION
1	1	03-0036	PIVOT LINK
2	2	03-0302	SPREAD HOOK
3	2	028-025	1/2 X 1-1/2 SCREW
4	4	028-133	3/8 X 3/4 SCREW
5	2	028-390	1/4 X 1-1/4 SCREW
6	1	50-0027	3/8 X 1 SHOULDER SCREW
7	2	50-0125	1/4 X 5/8 SCREW
8	2	51-0059	1/2 NYLON LOCK JAM NUT
9	2	54-0055	ADJUSTMENT PIN
10	1	055-145	5/16 NYLON LOCK NUT
11	8	055-154	3/8 NYLON LOCK NUT
12	4	055-160	1/4 NYLON LOCK
13	2	59-0087	LANYARD
14	2	71-0436	LINKAGE ARM
15	2	73-1190	ROLLER ROD
16	2	74-0387	ROLLER
17	1	096-004	1/4 NPT PLUG
18	1	096-013	1/4 NPT NIPPLE
19	2	096-038	1/4 NPT ELBOW
20	1	096-107	1/4 NPT COUPLER
21	1	096-155	1/4 NPT TEE
22	4	107-016	BEARING
23	6	108-015	3/8 WASHER
24	2	108-110	1/4 WASHER
25	1	110-011	SPRING
26	1	190-277	FOOT VALVE
27	1	835-020	FOOT GUARD
28	1	835-035	BREATHER FITTING
29	1	900-187	SPREAD CYLINDER
30	1	900-193	AIR LINE (Not Shown)
31	1	932-001	INLINE FILTER



Cylinder Assembly

ITEM	QTY	PART NO.	DESCRIPTION
1	1	950-194	SPREAD CYLINDER HOUSING
2	1	950-195	PISTON ROD ASSEMBLY
3	1	098-327	COVER PLATE
4	4	108-038	7/16 WASHER
5	4	028-005	7/16-14 x 3/4 SCREW
6	1	041-202	ROD SEAL
7	1	61-0028	QUAD RING SEAL
8	1	11-0065	NYLON WEAR STRIP