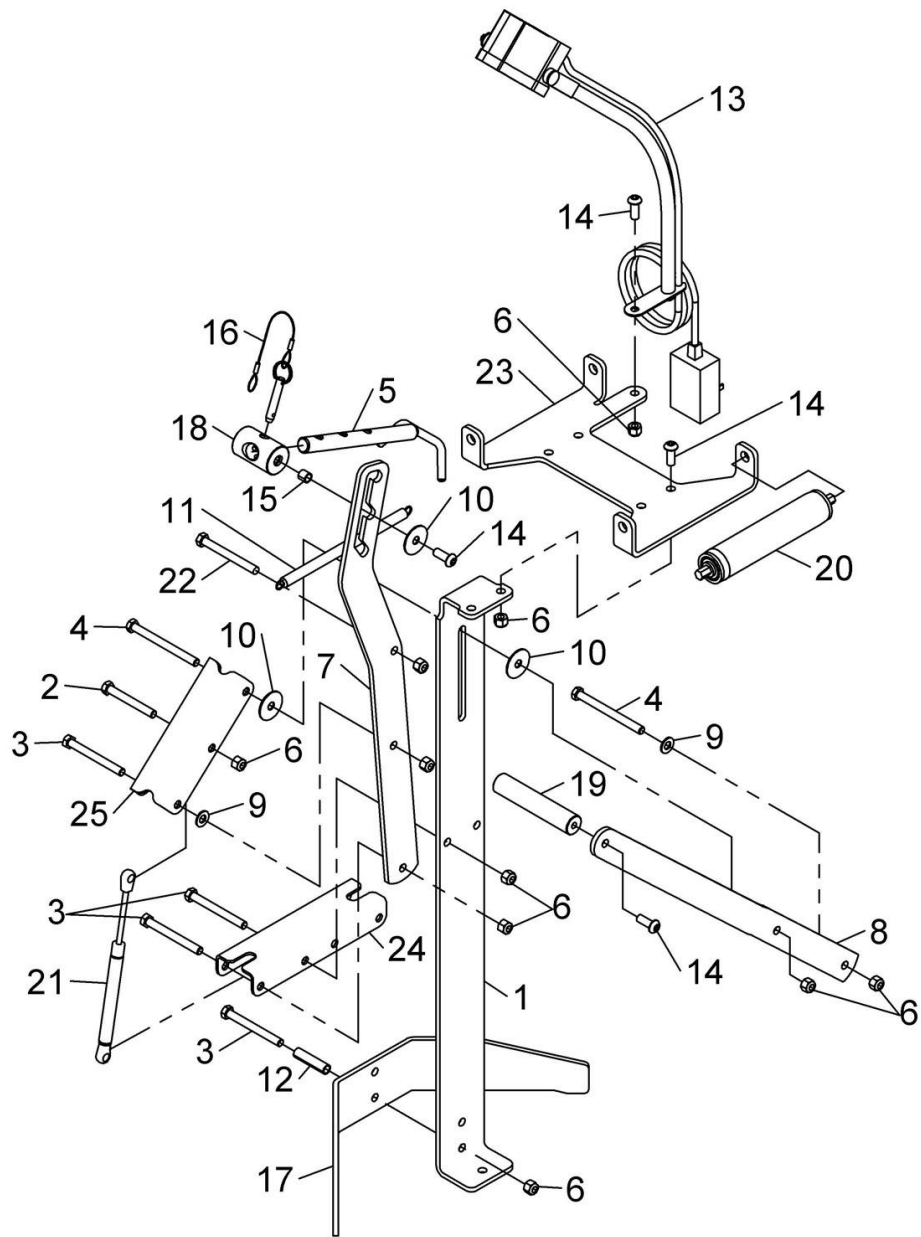




**MODEL 5045
TIRE SPREADER**

Repair Parts
Information



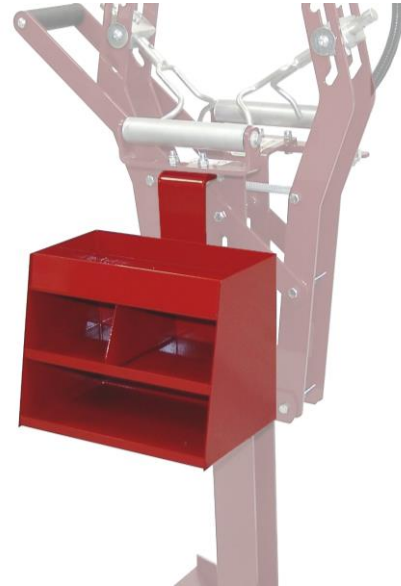


ITEM NO.	PART NO.	NO. REQ'D	DESCRIPTION	ITEM NO.	PART NO.	NO. REQ'D	DESCRIPTION
1	013-092	2	SPREADER GUIDE	14	50-0167	11	3/8 X 1 BHC SCREW
2	028-022	1	3/8 X 3 HHC SCREW	15	52-0023	4	7/16" SPACER
3	028-122	7	3/8 X 3-1/2 HHC SCREW	16	54-0051	2	QUICK RELEASE PIN
4	50-0182	2	3/8 X 4-1/4 HHC SCREW	17	636-049	2	LEG
5	03-0522	2	SPREAD HOOK	18	73-1111	2	ADJUSTMENT BLOCK
6	055-154	17	3/8 NYLOCK NUT	19	73-1112	1	PULL HANDLE
7	06-0110	4	SPREAD ARM	20	29-0006	2	ROLLER
8	06-0112	2	SPREAD HANDLE	21	01-0266	1	DAMPER
9	108-015	4	3/8 FLAT WASHER	22	50-0183	2	3/8 X 3-1/2 HHC SCREW FULL THREADS
10	108-141	8	3/8 FENDER WASHER	23	71-0396	1	ROLLER PLATE
11	110-083	1	SPRING	24	72-0533	1	ARM PIVOT
12	268-545	2	2" SPACER	25	72-0534	1	SPREAD LINKAGE
13	09-0020	1	LED LIGHT				

Storage Cabinet

The optional storage cabinet fits both the 5035 and 5045. It provides ample room to hold buffer, plugs, patches and anything else you need to perform tire repairs right at the spreader. Simple two bolt installation. All steel construction ensures long life and durability.

Part Number: 05-0056



Riser Base

The optional riser provides an additional 3 inches of lift to provide a more comfortable working height for taller individuals. All steel construction with pre-drilled floor mount holes. Installation takes only minutes.

Part Number: 05-0121

