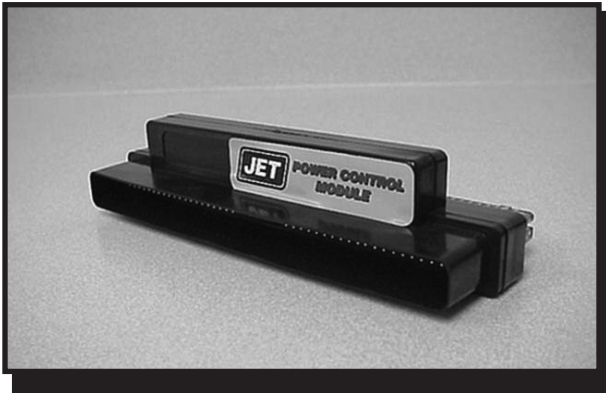




Power Control Module

97-04 Corvette

Installation Instructions



1997-2004 Corvette Installation Procedures

1. Disconnect negative battery cable
(see Fig. 1).



Figure 1

2. Using floor jack or lift, raise passenger front side of vehicle. Use extreme caution, only jack using factory recommendations and using factory jack points (see Fig. 2). If you have any questions, please consult your owners manual for correct jacking procedure. **MAKE SURE VEHICLE IS PROPERLY SECURED WITH JACK STANDS BEFORE PROCEEDING ANY FURTHER.**

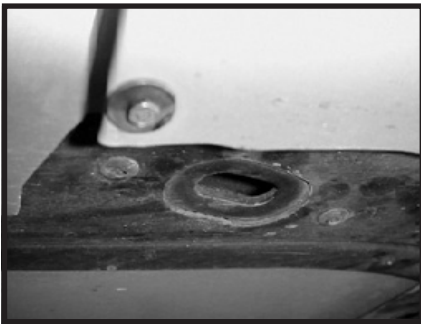


Figure 2

3. Remove ECU protective shroud (large plastic piece covering computer located inside passenger fenderwell) you must remove panel screw from the passenger wheel well (see Fig. 3). Now remove 2 screws on lower quarter panel, note one is located on the underside (see Fig. 4).



Figure 3



Figure 4

4. Remove the BLUE (97-99 & 03-04) or the RED (99-02) factory harness located nearest the fender of the vehicle, turn the connector bolt (9/32) counter clockwise to slowly draw the harness away from the computer (see Fig. 5).



Fig. 5

5. Install the JET extender bolt into the ECM (computer). Tighten the extender bolt all the way down until it bottoms out.

6. Install JET PCM into the factory computer (see Fig. 7).

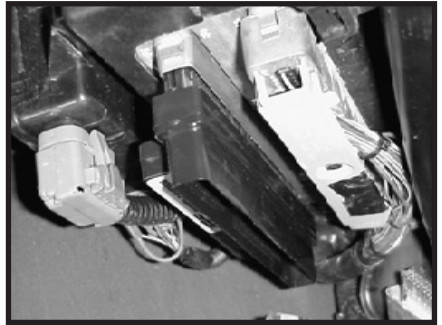


Fig. 7

7. Install factory harness onto the JET PCM (see Fig. 8).

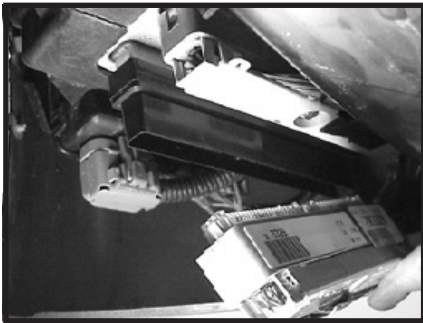


Fig. 8

8. Tighten connector bolt (9/32) on factory harness to draw the harness, JET PCM, and computer together nice and snug. (see Fig. 9).



Fig. 9

- To reinstall the ECU protective cover you will need to remove the factory wiring harness plastic cover, push the clips in and remove it to expose the wires. This is for clearance reasons and has no effect on the wiring (see Fig. 10).



Fig. 10



Fig. 1

- Remove jack stands and carefully lower vehicle. Follow proper lifting and lowering procedure.
- Reconnect negative battery cable (see Fig. 1).

- Start vehicle and verify no dash warning lights are on.