



Power Control Module Chevrolet/GM Truck

Installation Instructions



Chevrolet/GM Truck

Installation Procedures

1. Disconnect the negative terminal of the battery. (see *Fig. 1*)



Figure 1.

2. Locate the vehicles' computer (see chart below).

ECM Location Chart

96-up	S10/S15	2.2L	#1
01-02	S10/S15	4.3L	#1
03-up	S10/S15	4.3L	#1
99-up	Silverado/Sierra	4.8, 5.3, 6.0, 8.1	#2

#1 = Under hood passenger side on fender.

#2 = Under hood drivers side, between the engine & fender.

3. Follow chart below to identify color harness to remove:

96-up	2.2L	BLUE
01-02	4.3L	RED
03-up	4.3L	BLUE
99-02	4.8, 5.3, 6.0, 8.1L	RED
03-up	4.8, 5.3, 6.0, 8.1L	BLUE

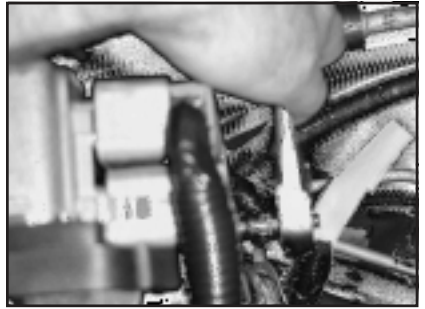


Fig. 3A

4. Remove the factory harness from the computer by backing out the 9/32 bolt (see photos 3A & 3B).



Fig. 3B

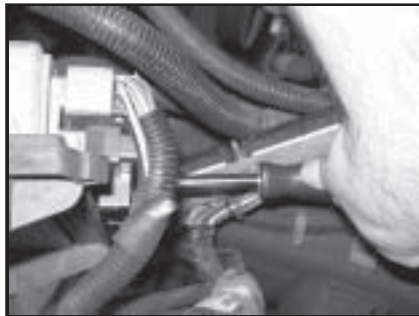


Fig. 4

5. Install JET PCM into computer, make sure the PCM is seated in the computer properly. Tighten the 5/16 bolt until seated (see fig. 4).

6. Reinstall the stock wiring harness in the JET PCM and tighten 9/32 bolt (see Fig. 5).



Fig. 5

7. Reconnect negative terminal of battery.
8. Start vehicle and verify no warning lights are on and vehicle is running normally.
9. Have fun with your added performance (see Fig. 6).



Fig. 6

10. If you do experience any problems, please call Technical Support at (714) 848-5515