

### 1. BILL OF MATERIAL



Camera



Manual

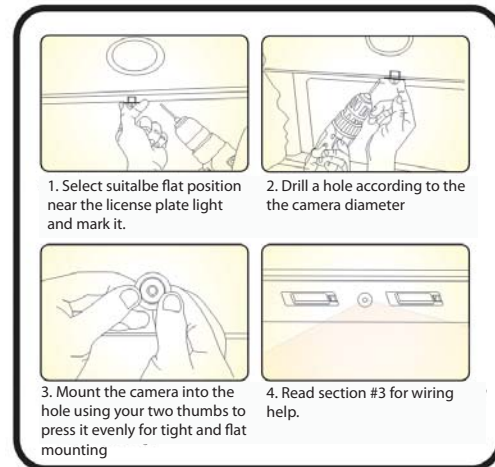


24' Male to male RCA cable

### 2. SPECIFICATION

- High sensitive 1/4" HD Color CMOS Sensor (1089)
- Reverse/ Non-reverse image selectable
- Parking guide line on/off selectable
- Waterproof (IP67)
- 170° wide viewing angle
- Super sensitive low Lux performance
- 12VDC (Tolerance 9V ~ 16V)
- Chipset 1089 HD
- Pixel: NTSC/PAL 800x533
- 0.05 Lux

### 4. Installation Tip



### 3. WIRING

