



Classic style with a name you can trust

Bosch is known for precision, engineering, and innovation. Add style and you have the first-ever line of Bosch gauges, including replacement tachometers, speedometers, temperature and pressure gauges for all applications.



BOSCH
Invented for life

Retro Line

Bosch Branded Gauges represent the latest in design following our 100+ year history of Automotive, Industrial, and Racing products.

The Retro line tachometers and gauges deliver style and performance while featuring a clean, easy to read look with white lettering against a black face.

FST 8050

Retro Line 3-3/8" Tachometer

Legendary 60's styling reproduced with modern electronics inside with retro looks outside.

Features:

- ▶ 3 3/8" with 90 degree sweep
- ▶ 0-8000 RPM Range, driven by Air Core meter
- ▶ Internal setting for 1,2,4,6,8 and 10 cylinder engines, DIS ignitions covered with 2 cylinder setting
- ▶ 360 degree lighting
- ▶ All metal tachometer housing with removable chrome cup, includes 2 mounting brackets.





BOSCH

Invented for life

Retro Line

FST 8000

Retro Line 3-3/8" Tachometer

Born in the 70's, this Super Tach was legendary in speed parts circles. As such this design is reproduced with modern electronics that interchange with many of the original components.

Features:

- ▶ 3 3/8" with 270 degree sweep
- ▶ 0-8000 RPM Range, driven by Air Core meter
- ▶ Internal setting for 1,2,4,6,8 and 10 cylinder engines, DIS ignitions covered with 2 cylinder setting
- ▶ 360 degree lighting
- ▶ All metal tachometer housing with removable chrome cap, includes 2 mounting brackets.



FST 7950

Retro Line 2" Electrical Fuel Level

- ▶ Traditional White and black look
- ▶ 60 degree sweep
- ▶ Standard 2" dial for 2 1/16" opening
- ▶ Requires a sender that puts out 240 Ohms Full to 33 Ohms Empty
- ▶ Requires FST 7591 Sender (sold separately)



Sport ST™ Line

The **Sport ST™ Line** is designed to match modern car interiors with a subtle metallic body and smooth exterior finish.



FST 7900

Sport ST 5" Tachometer

- ▶ 0-10,000 RPM Range, driven by vibration proof, Air Core meter
- ▶ Large 5" black dial face
- ▶ Compatible with 2, 4, 6, and 8 cylinder engines
- ▶ Pointer return to Zero feature
- ▶ Adjustable swivel mounting foot for mounting at any angle
- ▶ Unique shift light follows curved contours of the tachs body
- ▶ Soft touch outer bezel





BOSCH

Invented for life

Sport ST™ Line

FST 7001

Sport ST 2" Electrical Oil Pressure Gauge

- ▶ Range of 0-100 PSI with 90 degree sweep
- ▶ Electrical sweep mechanism featuring an air core movement
- ▶ Standard 2" dial for 2 1/16" opening
- ▶ Electrical pressure sender included
- ▶ Through dial lighting with night pointer illumination



FST 7005

Sport ST 2" Electrical Water/Oil/Trans Temperature Gauge

- ▶ Range of 100 -280 F with 90 degree sweep
- ▶ Electrical sweep mechanism featuring an air core movement
- ▶ Standard 2" dial for 2 1/16" opening
- ▶ Electrical temperature sender included
- ▶ Through dial lighting with night pointer illumination



FST 7025

Sport ST 2" Mechanical Boost Gauge

- ▶ Range of 0 -30 PSI with 270 degree sweep
- ▶ Precision mechanism for quick response
- ▶ Standard 2" dial for 2 1/16" opening
- ▶ Nylon tubing included with adapter fittings
- ▶ Through dial lighting with night pointer illumination



Sport III Tachometers

The Sport III Tachometers deliver style and performance while featuring our highest accuracy with fast needle response.



FST 7914 White/ FST 7905 Black
Sport III 5" Tachometer

- ▶ 0-10,000 RPM Range, driven by vibration proof, Air Core motor
- ▶ Large 5" dial face
- ▶ Compatible with 2, 4, 6, and 8 cylinder engines
- ▶ Pointer return to Zero feature
- ▶ Adjustable swivel mounting foot for mounting at any angle
- ▶ Dynamic blue adjustable shift light with RPM Set Point
- ▶ Solid metal housing with striking reflective chrome finish



BOSCH

Invented for life

Sport II Tachometers

The Sport II Tachometers deliver style and performance while featuring high accuracy with fast needle response for 90% of full scale.



Sport II 3-3/8" Tachometer

- ▶ 0-8000 RPM Range, driven by Air Core motor
- ▶ 3 3/8" dial face with 250 degree sweep
- ▶ Chrome or black bezel with mounting hardware
- ▶ Adjustable redline pointer
- ▶ Compatible with 4, 6, and 8 cylinder engines
- ▶ Functions with breaker points, electronic, and most after market ignition systems (not magnetos)

FST 7901

Sport II 3-3/8" Tachometer

Black dial face, chrome bezel

FST 7903

Sport II 3-3/8" Tachometer

White dial face, chrome bezel



Sport II Tachometers

Sport II 2-5/8" Tachometers

- ▶ 0-8000 RPM Range, driven by Air Core motor
- ▶ 2 5/8" dial face with 250 degree sweep
- ▶ Chrome or black bezel with mounting hardware
- ▶ Adjustable redline pointer
- ▶ Compatible with 4, 6, and 8 cylinder engines
- ▶ Functions with breaker points, electronic, and most after market ignition systems (not magnetos)



FST 7904
Sport II 2-5/8"
Tachometer

White dial face, black bezel



FST 7906
Sport II 2-5/8"
Tachometer

Black dial face, black bezel



FST 7911
Sport II 2-5/8"
Tachometer

White dial face, chrome bezel



BOSCH

Invented for life

Style Line™ Gauges

The **Style Line™** features a clean easy to read look with a bright pointer against a white or black background.



Mounting panel included

Style Line™ Gauges

2" Mechanical Gauge Features

- ▶ Features chrome bezel with removable chrome mounting panel or black bezel with removable black mounting panel
- ▶ Standard 2" dial for 2 1/16" opening
- ▶ Includes gauge and mounting hardware
- ▶ Includes 12 Volt internal back lighting



FST 8221 Style Line 2" EcoGauge™

Designed for drivers who desire to visually monitor how their driving habits affect fuel economy.

- ▶ 270 Degree sweep with ranges of poor, ideal, and decel
- ▶ Includes 72" of tubing with required fittings



FST 8203 White / FST 8213 Black Style Line 2" Mechanical Vacuum/ Boost Gauge

- ▶ 0 – 30 in. Hg Vacuum scale, 0 - 20 PSI Boost with 270 degree sweep
- ▶ 72" tubing and fittings included



FST 8206 White / FST 8216 Black Style Line 2" Mechanical Oil Pressure Gauge

- ▶ Range of 0-100 PSI with a 270 degree sweep
- ▶ Includes 72" high temperature nylon tubing with 1/2" and 1/4" NPT thread fittings



FST 8207 White / FST 8217 Black Style Line 2" Mechanical Water/Oil Temperature Gauge

- ▶ Range of 100-250 degrees Fahrenheit with 270 degree sweep



BOSCH

Invented for life

Style Line™ Gauges

2" Electrical Gauges Features

- ▶ Standard 2" dial for 2 1/16" opening
- ▶ Includes 12 Volt internal lighting
- ▶ Includes gauge and mounting hardware
- ▶ Features chrome bezel with removable chrome mounting panel or black bezel with removable black mounting panel
- ▶ Only for 12 Volt negative ground systems



FST 8209 White / FST 8219 Black

Style Line 2" Electrical Fuel Level Gauge

- ▶ E, 1/4, 1/2, 3/4, and F with a 60 dial sweep
- ▶ Requires Fuel level sender FST 7591



FST 8205 White / FST 8215 Black

Style Line 2" Electrical Voltmeter Gauge

- ▶ Range of 8 to 18 volts with a 60 degree sweep
- ▶ Requires hook up wire

Style Line™ Gauges



FST 8201 White / FST 8211 Black
**Style Line 2" Electrical Water/Oil
Temperature Gauge**

- ▶ Range of 100-280 degrees Fahrenheit
- ▶ Requires hook up wire
- ▶ Includes sending unit with 1/8" NPT thread and 1/4", 3/8" and 1/2" adapters



FST 8202
**Style Line 2" Electrical Oil
Pressure Gauge**

- ▶ Range of 0-100 PSI with a 60 degree sweep
- ▶ Requires hook up wire



FST 8204 White / FST 8214 Black
Style Line 2" Ammeter Gauge

- ▶ 60-0-60 Amp scale with 60 degree sweep
- ▶ Requires hook up wire



BOSCH

Invented for life

Style Line™ Triple Gauge Kits

Mini Triple Gauge Kit Features

- ▶ Includes Mechanical Water/Oil Temperature, Electrical Voltmeter, and Mechanical Oil Pressure gauges
- ▶ Popular Mini gauges packaged conveniently for easy installation
- ▶ Includes 12 Volt internal lighting
- ▶ Includes 72" high temperature nylon tubing with 1/8" and 1/4" NPT thread fittings
- ▶ Only for 12 Volt negative ground systems
- ▶ Includes gauges and mounting hardware



FST 8090

Style Line 1-1/2" Mini Triple Gauge Kit



FST 8091

Style Line 1-1/2" Mini Triple Gauge Kit



FST 8092

Style Line 1-1/2" Mini Triple Gauge Kit



Style Line™ Triple Gauge Kits

Triple Gauge Kit Features

- ▶ Includes 12 Volt internal lighting
- ▶ Includes 72" high temperature nylon tubing with 1/8" and 1/4" NPT thread fittings
- ▶ Only for 12 Volt negative ground systems
- ▶ Includes gauge and mounting hardware



FST 8208

2" Triple Gauge Kit

- ▶ Includes Oil/Water Temperature FST 8207, Electrical Voltmeter FST 8205, and Mechanical Oil Pressure FST 8206
- ▶ Standard 2" white dials for 2 1/16" opening
- ▶ Features chrome bezels with removable chrome mounting panel



FST 8218

2" Triple Gauge Kit

- ▶ Includes Oil/Water temperature FST 8217, Electrical voltmeter FST 8215, and Mechanical oil pressure FST 8216
- ▶ Standard 2" black dials for 2 1/16" opening
- ▶ Features black bezel with removable black mounting panel



BOSCH

Invented for life

Gauge Pods

**Universal, can be molded to fit most vehicles including:
Acura/Honda, Ford, Mitsubishi**



FST 7547

Single Gauge Pod

6 1/2"-7" length, the Bosch gauge pod lets you add additional gauges to your vehicles a-pillar post quickly and easily for a clear view of engine vital statistics. Gauge pods are made of heat and U/V resistant (will not warp or fade) ABS plastic and are paintable for a custom fit and finish. Gauge pods fit all Bosch 2" gauges.

FST 7548

Double Gauge Pod

13" - 14" length, the Bosch gauge pods let you add additional gauges to your vehicles a-pillar post quickly and easily for a clear view of engine vital statistics. Gauge pods are made of heat and U/V resistant (will not warp or fade) ABS plastic and are paintable for a custom fit and finish. Gauge pods fit all Bosch 2" gauges.



Custom Line™ Gauges

The Custom Line features a clean easy to read look with white line styling against a black background.

FST 7985

Custom Line 2" Electrical Voltmeter Gauge

- ▶ Range of 8 to 18 volts
- ▶ Includes matching mounting panel
- ▶ Standard 2" dial for 2 1/16" opening
- ▶ Requires hook up wire
- ▶ Includes 12 volt internal back lighting



FST 7982

Custom Line 2" Mechanical Oil Pressure Gauge

- ▶ Range of 0-100 PSI
- ▶ Includes 72" high temperature nylon tubing with 1/8 and 1/4" NPT fittings
- ▶ Standard 2" dial for 2 1/16" opening
- ▶ Includes matching mounting panel
- ▶ Includes 12 volt internal back lighting



FST 7983

Custom Line 2" Mechanical Water/Oil Temperature Gauge

- ▶ Range of 100-280 degrees Fahrenheit
- ▶ Standard 2" dial for 2 1/16" opening
- ▶ Includes matching mounting panel
- ▶ Includes 12 volt internal back lighting



BOSCH

Invented for life

Custom Line™ Triple Gauge Kit

FST 7994

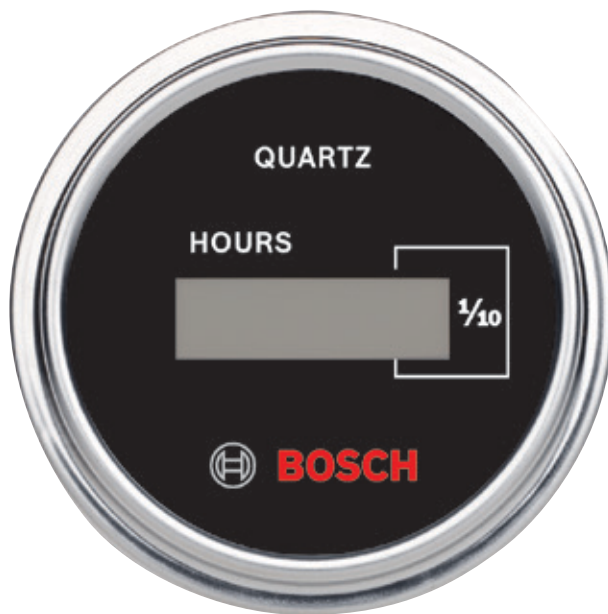
Custom Line Triple Gauge

- ▶ Combination of Oil, Volts, and Temp in one matching black panel
- ▶ Same scales as standard Custom line gauges
- ▶ Allows for custom under dash installation without additional items to purchase
- ▶ Includes matching mounting panel
- ▶ Includes 12 volt internal back lighting



Hour Meter Gauges

Bosch hour meters provide precise, tamper proof records for determining the operating periods of an engine in elapsed hours.



FST 7951

Digital Hour Meter

- ▶ Digital display that records in hours and tenths
- ▶ Records up to 100,000 hours
- ▶ Only records in run position
- ▶ Works with 12 or 24 Volt systems
- ▶ Uses standard 2" opening
- ▶ Includes required spade type insulated terminals



FST 7953

Analog Hour Meter

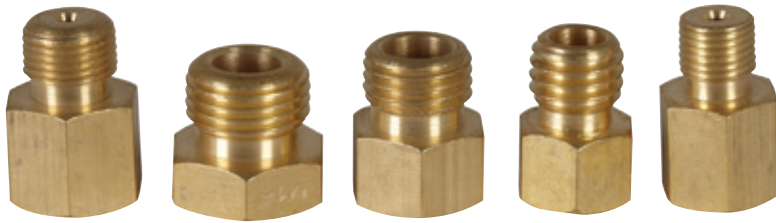
- ▶ Analog display that records in hours and tenths
- ▶ Records up to 100,000 hours
- ▶ Only records in run position
- ▶ Works with 12 or 24 Volt systems
- ▶ Uses standard 2" opening
- ▶ Includes required spade type insulated terminals



BOSCH

Invented for life

Accessories



FST 7573

Metric Adapter Kit

Five brass bushings for adapting electrical oil pressure and temperature gauges and mechanical oil pressure, boost gauges/ senders (except mechanical temperature gauges) to metric thread engines.

Caution: Electrical Temperature Gauges are only compatible with the M14 x 1.5 to 1/8" NPT and the M16 x 1.5 to 1/8" NPT

Included are:

- ▶ **M10 X 1.0 to 1/8" NPT** - Electrical & Mechanical Pressure and Boost gauges
- ▶ **M12 X 1.0 to 1/8" NPT** - Electrical & Mechanical Pressure and Boost gauges
- ▶ **M12 X 1.75 to 1/8" NPT** - Electrical & Mechanical Pressure and Boost gauges
- ▶ **M14 X 1.5 to 1/8" NPT** - Electrical Pressure & Temperature, Mechanical Pressure & Boost gauges
- ▶ **M16 X 1.5 to 1/8" NPT** - Electrical Pressure & Temperature, Mechanical Pressure & Boost gauges



FST 7555

Temp. Sender Adapter Kit

- ▶ Includes two brass bushings to adapt mechanical oil or water temperature gauges to 1/4" and 3/8" NPT external threads



FST 7593

Mini Gauge Illumination Kit

- ▶ For use with 12 volt 1-1/2" gauges with "slide-in" socket assembly



FST 7572

Illumination Kit

- ▶ For 12 Volt 2" gauges (current models) with "slide-in" socket assembly
- ▶ Uses GE 363 or equivalent replacement bulb

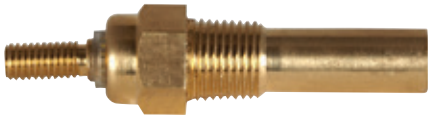


FST 7579

Single Chrome Mounting Panel

- ▶ Standard with many gauges where chrome or black bezels are provided
- ▶ Ideal for single mounting of 2" gauges

Accessories



FST 7576

Temperature Sender

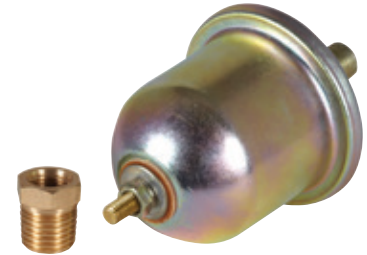
- ▶ For use with electrical water temperature gauges
- ▶ Standard with 1/8" NPT
- ▶ If metric adapter is needed for your application, use adapter kit FST 7573



FST 7591

Fuel Level Sender

- ▶ For use with Bosch fuel level gauges and 5" - 26" deep tanks
 - ▶ Includes gasket and mounting hardware
- Resistance specifications:**
- ▶ Empty: 240 ohms
 - ▶ 1/2: 130 ohms
 - ▶ Full: 33 ohms



FST 7577

Oil Pressure Sender

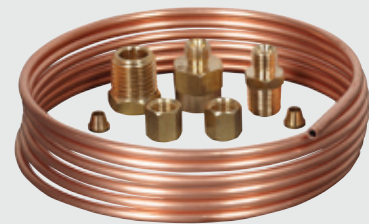
- ▶ For use with electrical oil pressure gauges
- ▶ Has 1/8" NPT threads and 1/4" NPT thread adapter
- ▶ Order Metric Adapter Kit FST 7573 when adapting to metric threads



FST 7554

Nylon Tubing Kit

- ▶ For use with mechanical pressure or mechanical boost gauges
- ▶ 1/8" and 1/4" NPT engine fittings
- ▶ 1/8" NPT gauge fitting
- ▶ 72" of high temperature nylon tubing
- ▶ If metric is needed for your application, use adapter kit FST 7573



FST 7584

Copper Tubing Installation Kit

- ▶ For use with mechanical pressure or mechanical boost gauges
- ▶ 1/8" and 1/4" NPT engine fittings
- ▶ 1/8" NPT gauge fitting
- ▶ 72" of soft copper tubing
- ▶ If metric is needed for your application, use adapter kit FST 7573

**BOSCH**

Invented for life

Weights & Dimensions

Model #	Part #	Single Unit Length	Single Unit Width	Single Unit Height	Single Unit Weight	Single Unit UPC Code	Factory Case Pack Qty.	Case Pack Depth	Case Pack Width	Case Pack Height	Case Pack Weight	Case Pack UPC Code
FST 8050	SP0F000063	7.5	7.2	8.5	2.7	077212006069	4	14.5	14.5	8.3	12	20077212006063
FST 8000	SP0F000062	7.5	7.2	8.5	2.8	077212006076	4	14.5	14.5	8.3	12	20077212006070
FST 7950	SP0F000031	7.0	4.5	3.25	0.45	077212005741	6	11.75	9.25	5	2.64	20077212005745
FST 7900	SP0F000015	10.1	7.7	4.0	2.5	077212005604	4	14.6	10.1	10.6	10	20077212005608
FST 7001	SP0F000000	7.0	4.5	3.6	1.0	077212005444	6	13	10.4	4.9	6	20077212005448
FST 7005	SP0F000001	7.0	4.5	3.6	1.0	077212005451	6	13	10.4	4.9	6	20077212005455
FST 7025	SP0F000002	7.0	4.5	3.6	1.0	077212005468	6	13	10.4	4.9	6	20077212005462
FST 7914	SP0F000029	10.3	7.6	5.0	2.3	077212005727	4	14.6	10.1	10.6	10	20077212005721
FST 7905	SP0F000023	10.3	7.6	5.0	2.3	077212005673	4	14.6	10.1	10.6	9.5	20077212005677
FST 7901	SP0F000018	7.9	6.1	4.5	1.33	077212005628	4	10.1	10.1	6.3	5.5	20077212005622
FST 7903	SP0F000020	7.9	6.1	4.5	1.33	077212005642	4	10.1	10.1	6.3	5.5	20077212005646
FST 7904	SP0F000022	7.9	6.1	3.5	0.8	077212005666	4	10.1	10.1	6.3	3.2	20077212005660
FST 7906	SP0F000025	7.9	6.1	3.5	0.8	077212005680	4	10.1	10.1	6.3	3.2	20077212005684
FST 7911	SP0F000027	7.9	6.1	3.5	0.8	077212005703	4	10.1	10.1	6.3	3.2	20077212005707
FST 8203	SP0F000042	7.0	4.5	3.6	0.5	077212005888	6	11.75	9.25	5	3.2	20077212005882
FST 8213	SP0F000050	7.0	4.5	3.6	0.5	077212005970	6	11.75	9.25	5	3.2	20077212005974
FST 8206	SP0F000044	7.0	4.5	3.6	0.5	077212005918	6	11.75	9.25	5	3.2	20077212005912
FST 8216	SP0F000052	7.0	4.5	3.6	0.5	077212006007	6	11.75	9.25	5	3.2	20077212006001
FST 8207	SP0F000045	7.0	4.5	3.6	0.8	077212005925	6	11.75	9.25	5	5	20077212005929
FST 8217	SP0F000053	7.0	4.5	3.6	0.8	077212006014	6	11.75	9.25	5	5	20077212006018
FST 8209	SP0F000048	7.0	4.5	3.6	0.44	077212005956	6	11.75	9.25	5	2.64	20077212005950
FST 8219	SP0F000056	7.0	4.5	3.6	0.44	077212006045	6	11.75	9.25	5	2.64	20077212006049
FST 8221	SP0F000057	7.0	4.5	3.6	0.5	077212006052	6	11.75	9.25	5	3.2	20077212006056
FST 8205	SP0F000043	7.0	4.5	3.6	0.4	077212005901	6	11.75	9.25	5	2.64	20077212005905
FST 8215	SP0F000051	7.0	4.5	3.6	0.4	077212005994	6	11.75	9.25	5	2.64	20077212005998
FST 8201	SP0F000040	7.0	4.5	3.6	0.7	077212005864	6	11.75	9.25	5	4.5	20077212005868
FST 8211	SP0F000049	7.0	4.5	3.6	0.7	077212005963	6	11.75	9.25	5	4.5	20077212005967
FST 8202	SP0F000041	7.0	4.5	3.6	0.8	077212005871	6	11.75	9.25	5	5	20077212005875
FST 8204	SP0F000058	7.0	4.5	3.6	0.4	077212005895	6	11.75	9.25	5	2.5	20077212005899
FST 8214	SP0F000059	7.0	4.5	3.6	0.4	077212005987	6	11.75	9.25	5	2.5	20077212005981

**BOSCH**

Invented for life

Weights & Dimensions

Model #	Part #	Single Unit Length	Single Unit Width	Single Unit Height	Single Unit Weight	Single Unit UPC Code	Factory Case Pack Qty.	Case Pack Depth	Case Pack Width	Case Pack Height	Case Pack Weight	Case Pack UPC Code
FST 8090	SP0F000037	8.0	7.0	3.5	1.25	077212005826	4	8.5	8.3	9.5	5.5	20077212005820
FST 8091	SP0F000017	8.0	7.0	3.5	1.25	077212005833	4	8.5	8.3	9.5	5.5	20077212005837
FST 8092	SP0F000039	8.0	7.0	3.5	1.25	077212005857	4	8.5	8.3	9.5	5.5	20077212005851
FST 8208	SP0F000046	7.0	9.25	3.5	2	077212005932	4	9.5	8.3	9.5	8	20077212005936
FST 8218	SP0F000054	7.0	9.25	3.5	2	077212006021	4	9.5	8.3	9.5	8	20077212006025
FST 7547	SP0F000003	7.0	4.25	8.75	0.25	077212005475	4	8.5	8.5	12	1.3	20077212005479
FST 7548	SP0F000004	7.0	4.25	16.5	0.63	077212005482	4	14.8	5.8	20	2.7	20077212005486
FST 7985	SP0F000035	7.0	4.5	3.6	0.5	077212005796	6	11.75	9.25	5	2.7	20077212005790
FST 7982	SP0F000033	7.0	4.5	3.6	0.5	077212005772	6	11.75	9.25	5	2.7	20077212005776
FST 7983	SP0F000034	7.0	4.5	3.6	0.5	077212005789	6	11.75	9.25	5	2.7	20077212005783
FST 7994	SP0F000024	7.0	9.25	3.6	2	077212005802	4	9.5	8.3	9.5	8	20077212005806
FST 7951	SP0F000060	7.0	4.5	3.6	0.25	077212005758	6	9	5	12	1.6	20077212005752
FST 7953	SP0F000032	7.0	4.5	3.6	0.25	077212005765	6	9	5	12	1.6	20077212005769
FST 7573	SP0F000009	6.4	4.5	1.3	0.3	077212005536	10	11	6.5	4.3	2.5	20077212005530
FST 7555	SP0F000007	6.4	4.45	1.3	0.2	077212005512	10	11	6.5	4.3	2	20077212005516
FST 7593	SP0F000014	6.4	4.5	1.3	0.2	077212005598	10	11	6.5	4.3	2	20077212005592
FST 7572	SP0F000008	6.4	4.5	1.3	0.2	077212005529	10	11	6.5	4.3	2	20077212005523
FST 7579	SP0F000061	6.4	4.5	1.3	0.2	077212005567	10	11	6.5	4.3	2	20077212005561
FST 7576	SP0F000010	6.4	4.5	1.3	0.2	077212005543	10	11	6.5	4.3	2	20077212005547
FST 7591	SP0F000013	16.5	3.0	3.0	0.8	077212005581	6	16.9	9.1	5.9	5	20077212005585
FST 7577	SP0F000011	2.0	3.8	2.0	0.25	077212005550	20	4.5	8.1	11.10	5.0	20077212005554
FST 7554	SP0F000006	8.0	5.0	2.3	0.2	077212005505	4	9.3	5.3	5.7	1	20077212005509
FST 7584	SP0F000012	8.0	5.0	2.3	0.3	077212005574	4	9.3	5.3	5.7	1.2	20077212005578