

Installation for Lincoln Navigator PN-140744



******* Please compare the parts in the box with the bill of materials provided *****
to assure that you have all the parts necessary for this installation.**

These instructions have been written to help you with the installation of your Borla Performance Exhaust System. Please read this document completely before beginning the installation of your system.

Thank you for purchasing a Borla Performance Cat-Back™ Exhaust System.

Borla Performance Cat-Back™ Exhaust System (PN-140744) is designed for the Lincoln Navigator equipped with a 3.5L TT V6 engine, automatic transmission.

Borla Performance Industries recommends that an exhaust shop or professional after market parts installer, who has all the necessary equipment, tools and experienced personnel needed for proper installation, should perform the installation of this system. However, if you decide to perform the installation, we recommend someone should help you. Ensure the installer uses all under car safety precautions including eye protection.

Please take time to read and understand the following...

By installing your Borla Performance Exhaust System, you indicate that you have read this document and you agree with the terms stated below.

It is the responsibility of the purchaser to follow all installation instruction guidelines and safety procedures supplied with your Borla Performance Exhaust System.

Borla Performance Industries assumes no responsibility for damages occurring from misuse, abuse, improper installation, improper operation, lack of responsible care, or all previously stated reasons resulting from incompatibility with other manufacturer's products and/or systems.

Minimum Required Tool List:

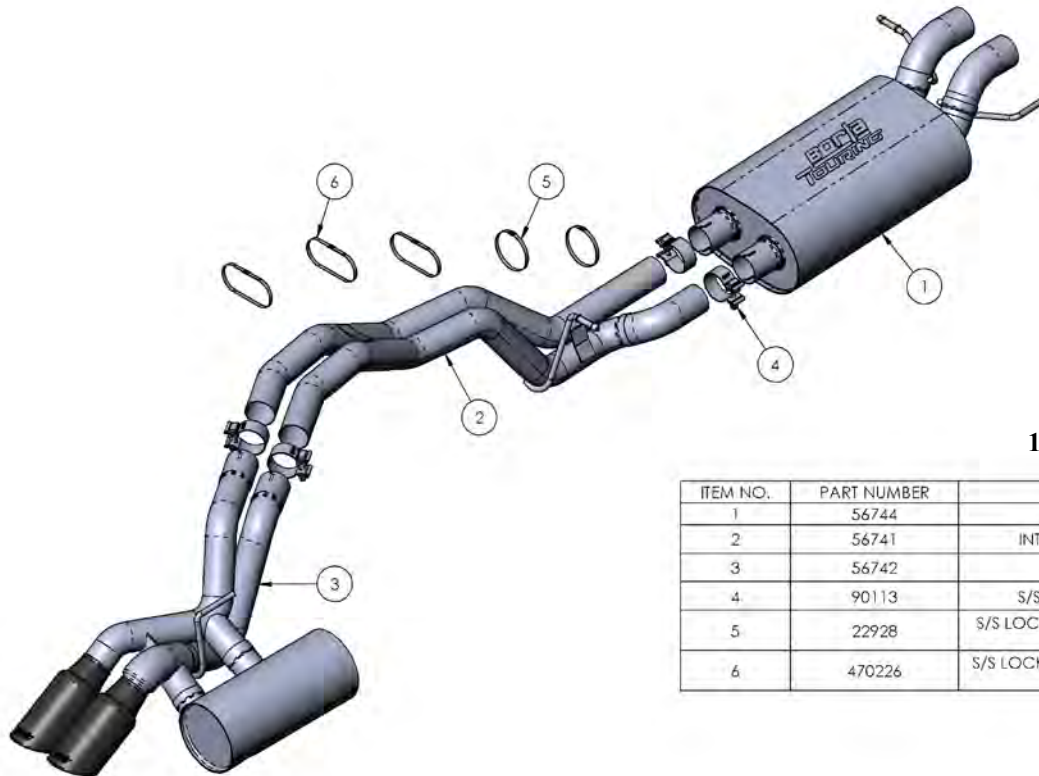
TOOLS:

1. 3/8” Drive Ratchet
2. 3/8” Drive Extension 3”
3. 15mm Deep Well Socket
4. 13mm Socket
5. Pry Bar

SHOP SUPPLIES:

- 1 Spray Lubricant

Borla Performance - Bill of Materials



140744

ITEM NO.	PART NUMBER	DESCRIPTION	QTY.
1	56744	MUFFLER ASSEMBLY	1
2	56741	INTERMEDIATE PIPE ASSEMBLY	1
3	56742	TAILPIPE ASSEMBLY	1
4	90113	S/S ACCUSEAL CLAMP Ø2.50	4
5	22928	S/S LOCKING CABLE TIE: 14" X .01" THK. X .31"	2
6	470226	S/S LOCKING CABLE TIE: .18 X 20.50 X .01" THK	3

Caution!!! *Never* work on a hot exhaust system. Serious injury in the form of burns can result if the vehicle has been in use and the exhaust system is hot, allow vehicle to cool for at least 1 hour. Always wear eye protection when working under any vehicle.

Note: It is our recommendation that you use a hoist or hydraulic lift to facilitate the installation of your new Borla Performance Exhaust System.

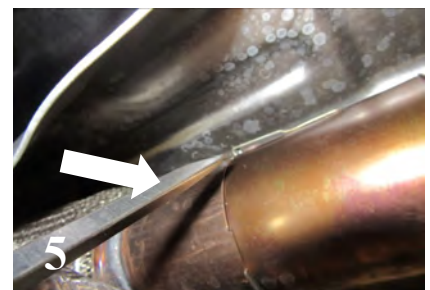
Taking all under car safety precautions, lift the vehicle using a hoist or hydraulic lift. Once this has been done, you may begin the removal of your old exhaust system from your vehicle.

Note: Before removing the original exhaust system from your vehicle, please compare the parts you have received with the bill of materials provided on the previous page to assure that you have all the parts necessary for the installation of your new Borla Performance Exhaust System.

Note: With a used vehicle, we suggest a penetrating spray lubricant to be applied liberally to all exhaust fasteners and allowing a significant period of time for the chemical to lubricate the threads before attempting to disassemble.

Original Exhaust System Removal

1. Lubricated all hangers, rubber isolators, bolts and nuts.
2. To make the removal and installation of your exhaust easier, remove spare tire as recommended by vehicle manufacture. (See Fig. 1)
3. Unbolt and remove the heatshield next to the spare tire, place the hardware aside for reinstallation later. (See Fig. 2)
4. Using a flat screwdriver and twist to release the pin on Rear Muffler Assembly and slide clamp. (See Figs. 3 & 5)
5. Unbolt the sway bar for more clearance and place the hardware aside for reinstallation later. (See Fig. 4)



Caution!!! *Never work on a hot exhaust system. Serious injury in the form of burns can result if the vehicle has been in use and the exhaust system is hot, allow vehicle to cool for at least 1 hour. Always wear eye protection when working under any vehicle.*

Note: *It is our recommendation that you use a hoist or hydraulic lift to facilitate the installation of your new Borla Performance Exhaust System.*

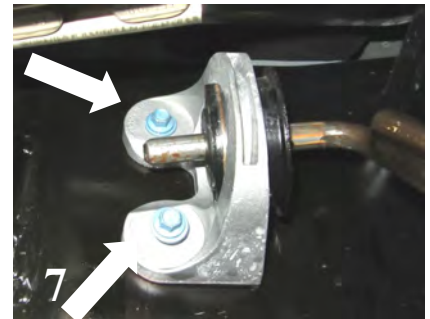
Taking all under car safety precautions, lift the vehicle using a hoist or hydraulic lift. Once this has been done, you may begin the removal of your old exhaust system from your vehicle.

Note: *Before removing the original exhaust system from your vehicle, please compare the parts you have received with the bill of materials provided on the previous page to assure that you have all the parts necessary for the installation of your new Borla Performance Exhaust System.*

Note: *With a used vehicle, we suggest a penetrating spray lubricant to be applied liberally to all exhaust fasteners and allowing a significant period of time for the chemical to lubricate the threads before attempting to disassemble.*

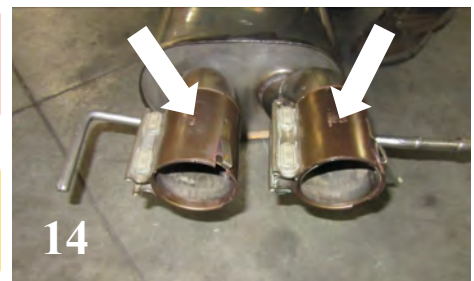
Original Exhaust System Removal (Cont'd)

- Loosen (2) factory band clamps on the Front Muffler Assembly and place to the side for reinstallation. (See Fig. 6)
- Remove (2) bolts from hanger bracket and place to the side for reinstallation on your new system. (See Fig. 7)
- Use a muffler stand or an additional person to support the Muffler Assembly. Remove the hangers from rubber isolators and remove the muffler assembly from the vehicle. (See Fig. 8)
- OE exhaust system removed. (See Fig. 9)
- Carefully remove factory heatshield from OE exhaust system and place aside for reinstallation.



Borla Performance Cat-Back™ Exhaust System Installation

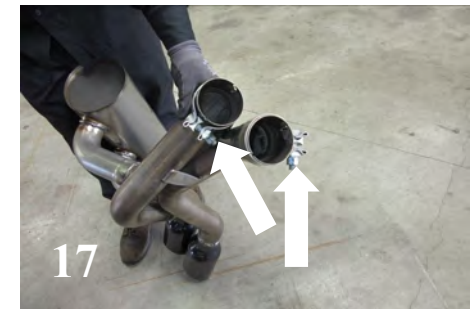
1. Orient components on floor referencing page-2 drawing. (See Fig. 10)
2. Place a clamp on both inlets of the **Intermediate Pipe Assembly** and insert outlets into the inlets of the **Muffler Assembly**. (See Fig. 11) Snug clamp bolts on clamp enough to hold both assemblies together.
3. Install OE heatshield to Borla system using provided SS **Locking Cable Ties**. (See Figs. 12 & 13)
4. Insert a OE Band Clamp on both inlets of the **Muffler Assembly**. (See Figs. 14) Do not tighten the clamps.



WARNING: Use extreme caution during installation. Torque all fasteners according to manufacturer's torque values and tightening sequence. **DO NOT** use air impact tools to tighten fasteners on Borla Performance Exhaust Systems. Use of such tools may result in bent flanges or gasket contact areas leading to exhaust leaks.

NOTE: When you first start your vehicle after the installation of your new Borla Performance Exhaust System, there may be some smoke and fumes coming from the system. This is a protective oil based coating used in the manufacturing of mandrel bent performance exhaust tubing. This is not a problem and will disappear within a very short period of time after the exhaust has reached normal operating temperatures.

Borla Performance Cat-Back™ Exhaust System Installation (cont'd)



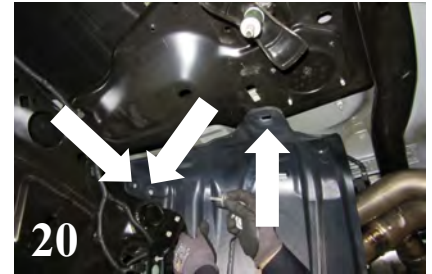
5. Reinstall the OE hanger adjacent to the front muffler pipe. Carefully lift assembly inserting hangers into the rubber isolators and **Muffler Assembly** inlets into the OE front pipe. (See Figs. 15-16)
6. Place a clamp on each inlet of the **Tail Pipe Assembly**. (See Fig. 17)
7. Insert the inlets of the **Tail Pipe Assembly** into the **Intermediate Pipe Assembly**. Insert hangers of **Tail Pipe Assembly** into the rubber isolators. Align clamp bolts as shown. (See Figs. 18 & 19)

WARNING: Use extreme caution during installation. Torque all fasteners according to manufacturer's torque values and tightening sequence. **DO NOT** use air impact tools to tighten fasteners on Borla Performance Exhaust Systems. Use of such tools may result in bent flanges or gasket contact areas leading to exhaust leaks.

NOTE: When you first start your vehicle after the installation of your new Borla Performance Exhaust System, there may be some smoke and fumes coming from the system. This is a protective oil based coating used in the manufacturing of mandrel bent performance exhaust tubing. This is not a problem and will disappear within a very short period of time after the exhaust has reached normal operating temperatures.

Borla Performance Cat-Back™ Exhaust System Installation (cont'd)

8. Reinstall the OE heatshield to the vehicle using the factory hardware. (See Fig. 20)
9. Secure the spare tire back to the vehicle as recommended by the manufacturer. (See Fig. 21)
10. Reinstall sway bar bracket to vehicle using factory hardware. (See Fig. 22)
11. Check your exhaust system for proper clearance under the vehicle and also for tip alignment. Starting at front flanges and moving to rear of vehicle, tighten flange hardware bolts. Orient position of bolt (on supplied clamps) between (not over) pipe notches and tighten to 35 ft. lbs. torque.
12. Align tips and tighten hardware. Loosen clamps to rotate or slide pipe for better alignment. (See Fig. 23)
13. Before starting your vehicle, make sure to check all wires, hoses, brake lines, body parts and tires for safe clearance from the exhaust system.
14. Start vehicle and check for any leaks. If any leaks are found, determine cause (such as loose or incorrectly positioned clamp) and repair as necessary.



WARNING: Use extreme caution during installation. Torque all fasteners according to manufacturer's torque values and tightening sequence. **DO NOT** use air impact tools to tighten fasteners on Borla Performance Exhaust Systems. Use of such tools may result in bent flanges or gasket contact areas leading to exhaust leaks.

NOTE: When you first start your vehicle after the installation of your new Borla Performance Exhaust System, there may be some smoke and fumes coming from the system. This is a protective oil based coating used in the manufacturing of mandrel bent performance exhaust tubing. This is not a problem and will disappear within a very short period of time after the exhaust has reached normal operating temperatures.