

Exhaust System Installation for Volkswagen Passat PN-140705



******* Please compare the parts in the box with the bill of materials provided *****
to assure that you have all the parts necessary for this installation.**

These instructions have been written to help you with the installation of your Borla Performance Exhaust System. Please read this document completely before beginning the installation of your system.

Thank you for purchasing a Borla Performance Cat-Back™ Exhaust System.

Borla Performance Cat-Back™ Exhaust System (PN-140705) is designed for the Volkswagen Passat SEL equipped with a 3.6L V6 engine, automatic transmission.

Borla Performance Industries recommends that an exhaust shop or professional after market parts installer, who has all the necessary equipment, tools and experienced personnel needed for proper installation, should perform the installation of this system. However, if you decide to perform the installation, we recommend someone should help you. Ensure the installer uses all under car safety precautions including eye protection.

Please take time to read and understand the following...

By installing your Borla Performance Exhaust System, you indicate that you have read this document and you agree with the terms stated below.

It is the responsibility of the purchaser to follow all installation instruction guidelines and safety procedures supplied with your Borla Performance Exhaust System.

Borla Performance Industries assumes no responsibility for damages occurring from misuse, abuse, improper installation, improper operation, lack of responsible care, or all previously stated reasons resulting from incompatibility with other manufacturer's products and/or systems.

Included with your Borla Performance Exhaust System is a warranty card. Please read it carefully before you begin any work on your vehicle.

Minimum Required Tool List:

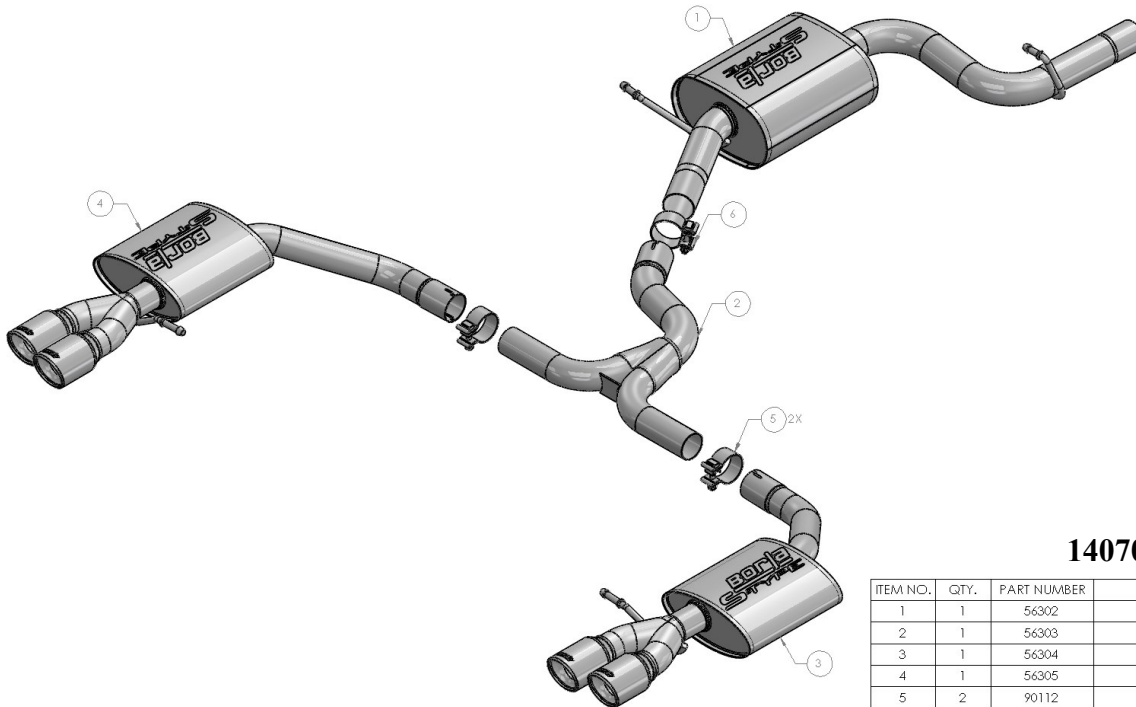
TOOLS:

1. 3/8" Drive Ratchet
2. 3/8" Drive Extension 3"
3. 15mm Deep Well Socket
4. 13mm socket
5. Pry Bar

SHOP SUPPLIES:

- 1 Spray Lubricant

Borla Performance - Bill of Materials



140705

ITEM NO.	QTY.	PART NUMBER	DESCRIPTION
1	1	56302	FRONT MUFFLER ASSEMBLY
2	1	56303	Y-PIPE ASSEMBLY
3	1	56304	R/H REAR MUFFLER ASSEMBLY
4	1	56305	L/H REAR MUFFLER ASSEMBLY
5	2	90112	2.25 ACCUSEAL CLAMP
6	1	90113	3/8 ACCUSEAL CLAMP Ø2.50

Caution!!! *Never work on a hot exhaust system. Serious injury in the form of burns can result. If the vehicle has been in use and the exhaust system is hot, allow vehicle to cool for at least 1 hour. Always wear eye protection when working under any vehicle.*

Note: *It is our recommendation that you use a hoist or hydraulic lift to facilitate the installation of your new Borla Performance Exhaust System.*

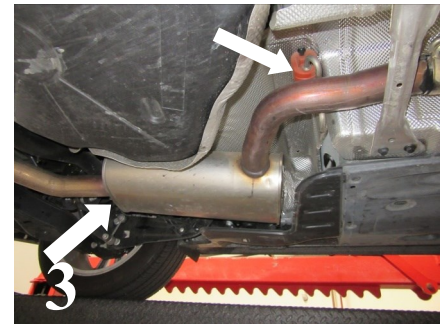
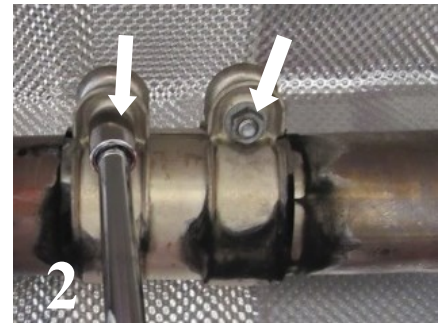
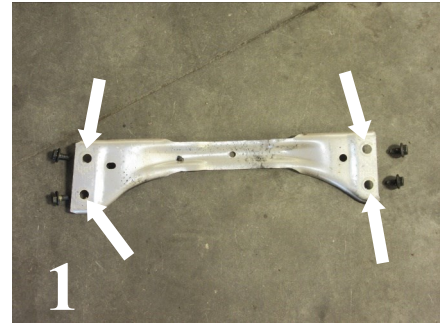
Taking all under car safety precautions, lift the vehicle using a hoist or hydraulic lift. Once this has been done, you may begin the removal of your old exhaust system from your vehicle.

Note: *Before removing the original exhaust system from your vehicle, please compare the parts you have received with the bill of materials provided on the previous page to assure that you have all the parts necessary for the installation of your new Borla Performance Exhaust System.*

Note: *With a used vehicle, we suggest a penetrating spray lubricant to be applied liberally to all exhaust fasteners and allowing a significant period of time for the chemical to lubricate the threads before attempting to disassemble.*

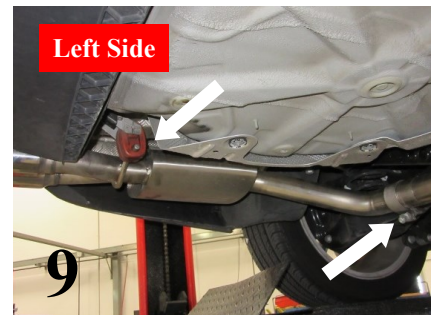
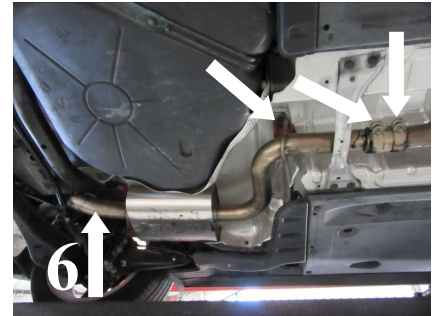
Original Exhaust System Removal

1. Loosen and remove (4) bolts on cross-brace and drop-down for access to band clamp bolts. (See Fig. 1)
2. Loosen and remove the bolts on band clamp and slide clamp towards the front of the vehicle keep the hardware for re-installation. (See Fig. 2)
3. Remove (2) hangers on mid-muffler assembly from the rubber isolator. (See Fig. 3)
4. Remove (2) hangers from rubber isolators on R/H and L/H rear mufflers. (See Fig. 4)
5. Using a muffler stand or an additional person to hold the muffler assembly up into position, and remove the system from the vehicle.
6. Exhaust system removed. (See Fig. 5)



Borla Performance Cat-Back™ Exhaust System Installation

1. Orient components on floor referencing page-2 drawing.
2. Place the **Front Muffler Assembly** into position inserting hangers into the rubber isolators. Slide and position the clamp with the bolts accessible to tighten later. (See Fig. 6)
3. Place a clamp over the expanded end of the **Y-Pipe Assembly** and insert inlet into the **Front Muffler Assembly** outlet. (See Fig. 7) Do not tighten the clamp bolts.
4. Starting on the right side, place a clamp over the expanded end of the **R/H Muffler Assembly**, slide the inlet into **Y-pipe** outlet and insert hanger into rubber isolator. (See Fig. 8) Do not tighten the clamp bolts.
5. Repeat STEP 4 for the **L/H Muffler Assembly**. (See Fig. 9)
6. Reinstall the Cross-Brace to vehicle using the original hardware.
7. Check your exhaust system for proper clearance under the vehicle and also for tip alignment. Starting at front and moving to rear of vehicle, tighten hardware bolts. (See Fig. 10)
8. Orient position of bolt (on supplied clamps) between pipe notches and tighten to 35 ft. lbs. torque.
9. Before starting your vehicle, make sure to check all wires, hoses, brake lines, body parts and tires for safe clearance from the exhaust system.
10. Start vehicle and check for any leaks. If any leaks are found, determine cause (such as loose or incorrectly positioned clamp) and repair as necessary.



WARNING: Use extreme caution during installation. Torque all fasteners according to manufacturer's torque values and tightening sequence. **DO NOT** use air impact tools to tighten fasteners on Borla Performance Exhaust Systems. Use of such tools may result in bent flanges or gasket contact areas leading to exhaust leaks.

NOTE: When you first start your vehicle after the installation of your new Borla Performance Exhaust System, there may be some smoke and fumes coming from the system. This is a protective oil based coating used in the manufacturing of mandrel bent performance exhaust tubing. This is not a problem and will disappear within a very short period of time after the exhaust has reached normal operating temperatures.