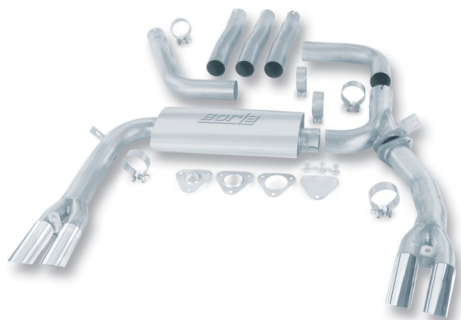


Exhaust System Installation
for Camaro SS/ Camaro Z28/ Trans-Am/ Firebird/ Formula Firebird
PN-14888



Thank you for purchasing a Borla Performance Exhaust System.

Borla Performance Exhaust System (PN-14888) is designed for the Chevrolet Camaro SS & Camaro Z28, and Pontiac Trans-Am, Firebird & Formula Firebird, Coupe/Convertible, 5.0L/5.7L V8 engine, RWD, automatic or manual transmissions.

Borla Performance Industries recommends that an exhaust shop or professional after market parts installer, who has all the necessary equipment, tools and experienced personnel needed for proper installation, should perform the installation of this system. However, if you decide to perform the installation, we recommend someone should help you. Ensure the installer uses all under car safety precautions including eye protection.

Please take time to read and understand the following...

By installing your Borla Performance Exhaust System, you indicate that you have read this document and you agree with the terms stated below.

It is the responsibility of the purchaser to follow all installation instruction guidelines and safety procedures supplied with your Borla Performance Exhaust System.

Borla Performance Industries assumes no responsibility for damages occurring from misuse, abuse, improper installation, improper operation, lack of responsible care, or all previously stated reasons resulting from incompatibility with other manufacturer's products and/or systems.

Included with your Borla Performance Exhaust System is a warranty card. Please read it carefully before you begin any work on your vehicle. If you should have any questions regarding our warranty policy, installation, or any other matter pertaining to your new Borla Performance Exhaust System, please give us a call at the number provided on the warranty card.

Minimum Required Tool List:

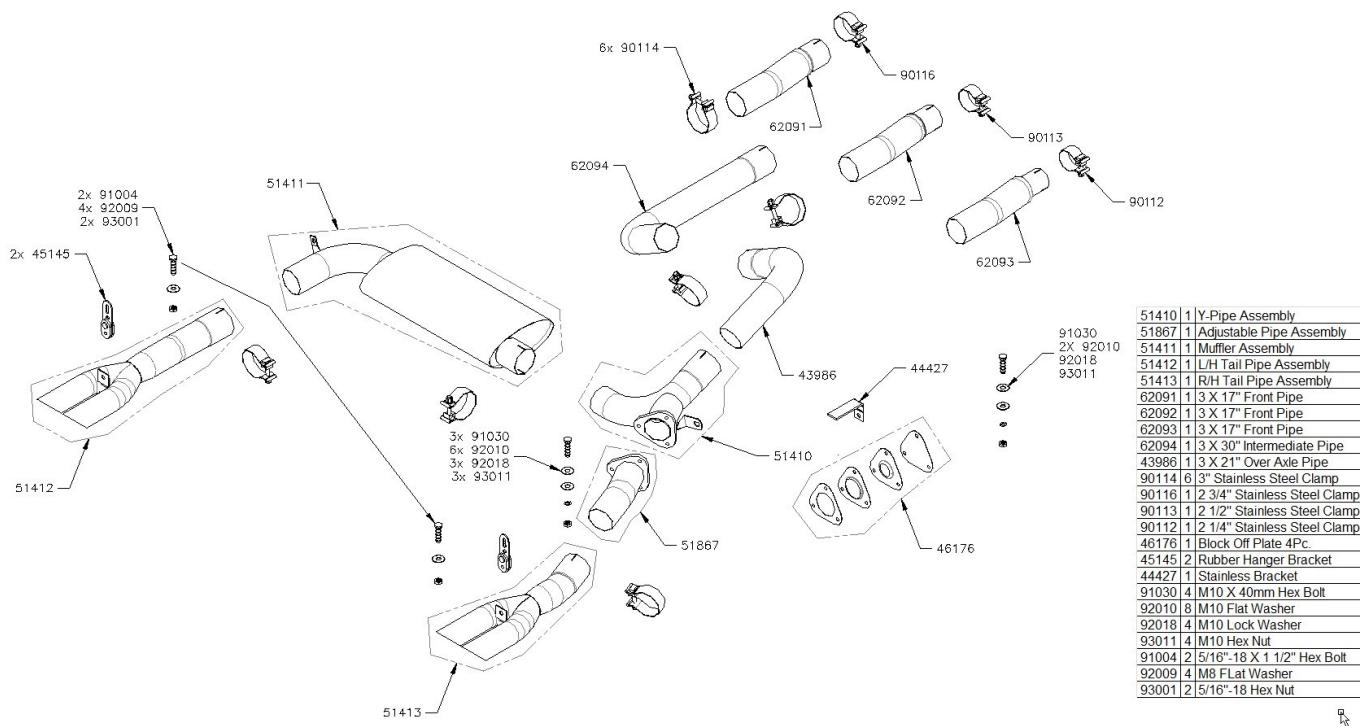
TOOLS:

1. 3/8" Drive Ratchet
2. 3/8" Drive Extension 3"
3. 15mm Socket
4. 3/8" Ratchet
5. 15mm Wrench
6. 17mm Socket
7. 17mm Wrench
8. Pry Bar

SHOP SUPPLIES:

- 1 Spray Lubricant

Borla Performance - Bill of Materials



51410	1	Y-Pipe Assembly
51867	1	Adjustable Pipe Assembly
51411	1	Muffler Assembly
51412	1	L/H Tail Pipe Assembly
51413	1	R/H Tail Pipe Assembly
62091	1	3 X 17" Front Pipe
62092	1	3 X 17" Front Pipe
62093	1	3 X 17" Front Pipe
62094	1	3 X 30" Intermediate Pipe
43986	1	3 X 21" Over Axle Pipe
90114	6	3" Stainless Steel Clamp
90116	1	2 3/4" Stainless Steel Clamp
90113	1	2 1/2" Stainless Steel Clamp
90112	1	2 1/4" Stainless Steel Clamp
46176	1	Block Off Plate 4Pc.
45145	2	Rubber Hanger Bracket
44427	1	Stainless Bracket
91030	4	M10 X 40mm Hex Bolt
92010	8	M10 Flat Washer
92018	4	M10 Lock Washer
93011	4	M10 Hex Nut
91004	2	5/16"-18 X 1 1/2" Hex Bolt
92009	4	M8 Flat Washer
93001	2	5/16"-18 Hex Nut