



## TBR003

### 79-04 MUSTANG LOWER TORQUE BOX REINFORCEMENT

#### Tools required:

- Wrenches: 18mm, 9/16", 21mm (1994+ only)
- Sockets: 18mm deep, 9/16" with extension, T50 torx bit, 8mm (1994+ only)
- Drill with 3/8" bit
- Flathead screwdriver
- Jack and jack stands
- Rust preventative paint
- Crescent wrench or pliers (1994+ only)
- Body saw or cutoff wheel (1994+ only)

**NOTE:** Reinforcement plates are supplied bare to give the option of welding the plates in. If you don't plan to weld the plates, paint the plates before installing with a rust preventative paint.

#### Installation:

1. Remove rear seat by pulling the front of the seat upward.
2. Remove rear seat frame using an 18mm socket and T50 torx bit shown in **IMAGE 1**. **NOTE:** Seat frame may differ based on year of vehicle.



3. Remove rubber floor plugs using flathead screwdriver. **NOTE:** Later models have ABS wiring routed through floor plug. Unplug the ABS harness as shown in **IMAGE 2** and trim rubber plug to fit between upper and lower plate.



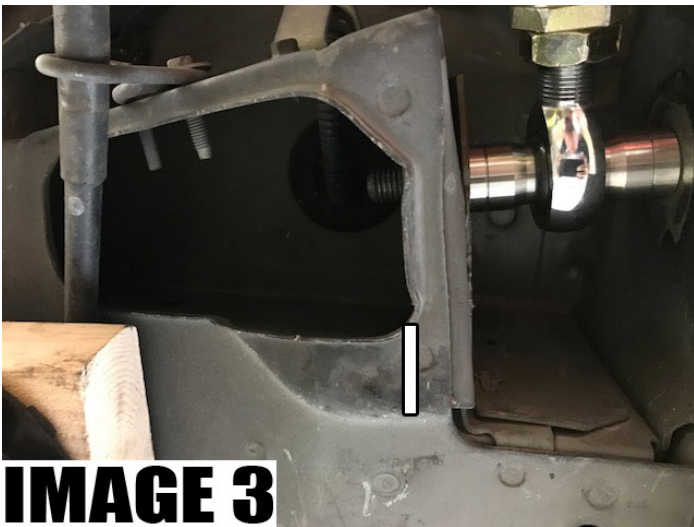
4. Lift rear of vehicle and place on jack stands.

**On 1994+ models refer to steps 5 - 7.**

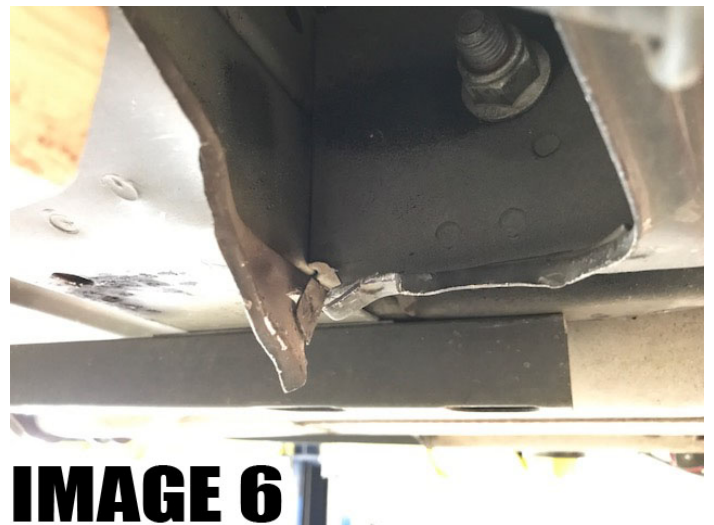
5. On later model vehicles, you may have to trim back material to allow the lower reinforcement plate to fit as shown in **IMAGE 3 and 4**.

**TBR003**  
**79-04 MUSTANG LOWER TORQUE BOX REINFORCEMENT**

*continued*



6. Using a crescent wrench, pry the material back to allow the plate to fit as shown in **IMAGES 5 and 6**.



7. Remove two 8mm bolts holding E-brake and ABS harness as shown in **IMAGE 7**.

**TBR003**

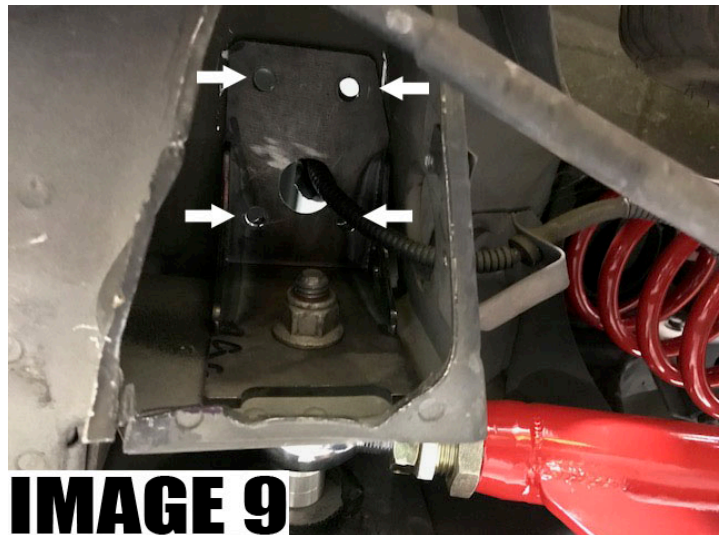
**79-04 MUSTANG LOWER TORQUE BOX REINFORCEMENT**

*continued*



8. Using the 18mm socket and wrench (79-93) or 18mm socket and 21mm wrench (94-04), remove the nut from the lower control arm bolt but leave the bolt in place as shown in **IMAGE 8**.

9. Position lower plate as shown in and bolt in place. Drill four 3/8" holes as shown in **IMAGE 9**.





## TBR003

### 79-04 MUSTANG LOWER TORQUE BOX REINFORCEMENT

*continued*

- Place the upper plate in position as shown in **IMAGE 10**. (NOTE: If welding upper plates, mark the position of the plates and clean the area to be welded as shown in **IMAGE 11**.)
- Using the 9/16" socket and wrench, bolt the upper plate in using the supplied hardware.

**IMAGE 10**



**IMAGE 11**

If welding, continue to steps 10 - 12. NOTE: If welding plates, use caution not to melt wiring harness or grommet.

- Weld upper plate as shown in **IMAGE 12**.
- Weld lower plate in the relief area as shown in **IMAGE 13**.
- Mask off and paint plates and welded area.

**IMAGE 12**



**IMAGE 13**