

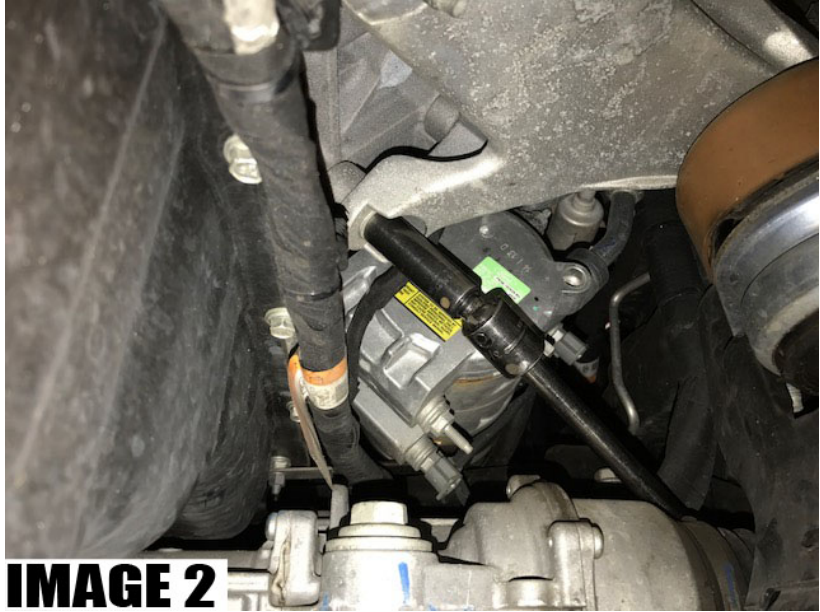


MM008 INSTALLATION INSTRUCTIONS

Tools required:

Jack and jackstands
Ratchet
Sockets - 13mm deep, 15mm deep
Extension
10mm wrench
Pliers or cutoff tool

1. Disconnect battery using 10mm wrench.
2. Using 15mm socket and extension, remove driver and passenger upper motor mount nuts as shown in **IMAGE 1**.
3. Lift vehicle and support securely with jack stands. Using an engine support bar or jack, support the engine.
4. Remove four 13mm bolts from passenger side engine stand as shown in **IMAGE 2**.

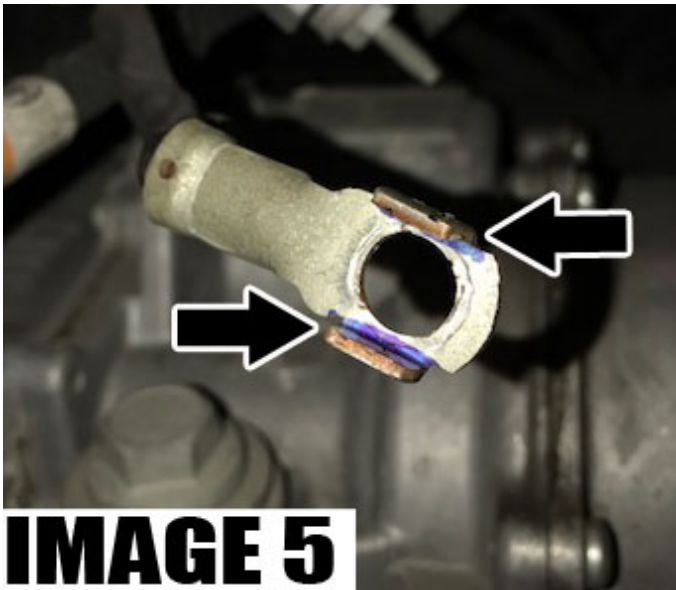
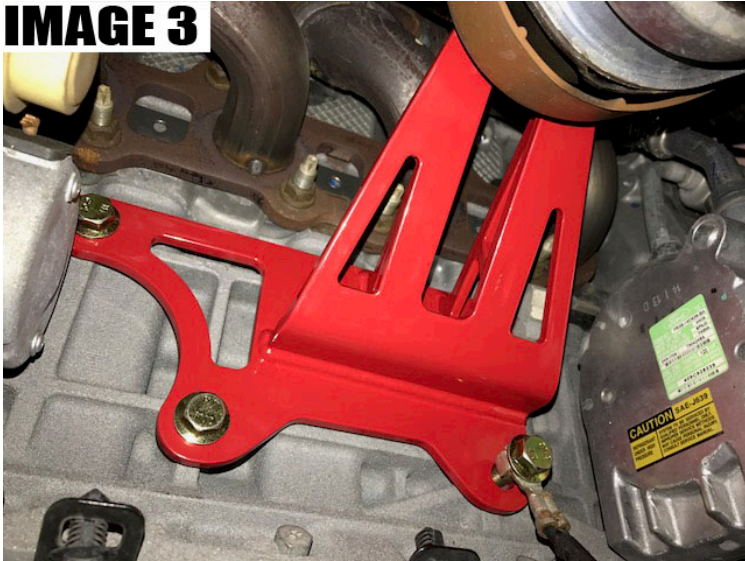


5. Install passenger side motor mount using supplied 15mm hardware as shown in **IMAGE 3**. **NOTE: Tabs on ground strap need to be flattened as shown in IMAGE 4. Alternatively, you can cut the tabs off the strap, or cut the OEM stud and reuse it in the original mounting location. See IMAGE 5 and 6.**



MM008 INSTALLATION INSTRUCTIONS

continued

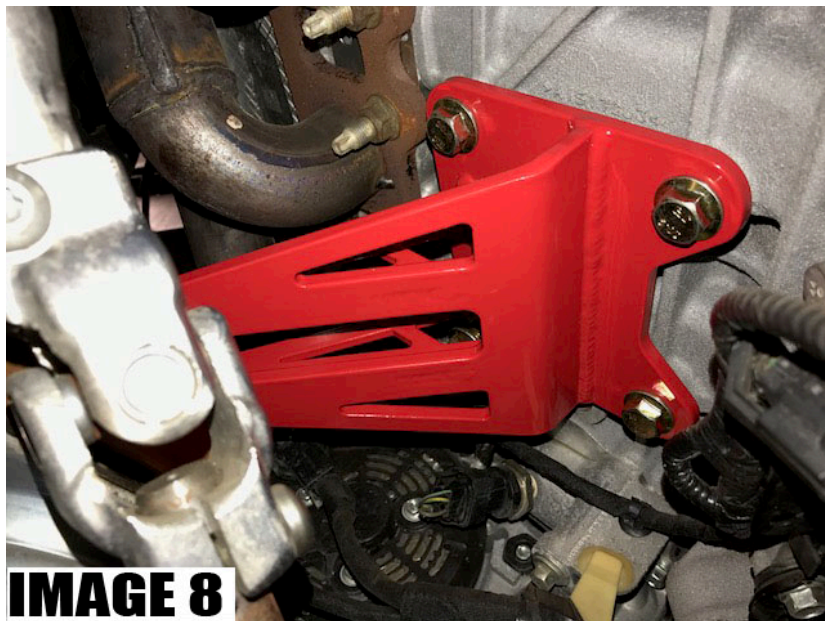
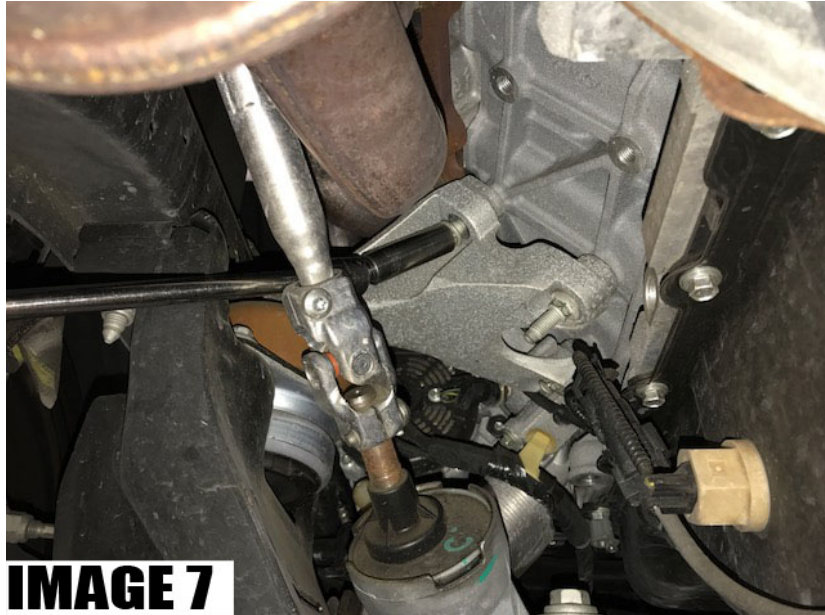


6. Remove four 13mm bolts from drivers side engine stand as shown in **IMAGE 7**.
7. Install drivers side engine stand using supplied 15mm hardware as shown in **IMAGE 8**.



MM008 INSTALLATION INSTRUCTIONS

continued



8. Lower engine until it sits on new motor mounts.
9. Install upper motor mount nuts.
10. Lower vehicle and connect battery.