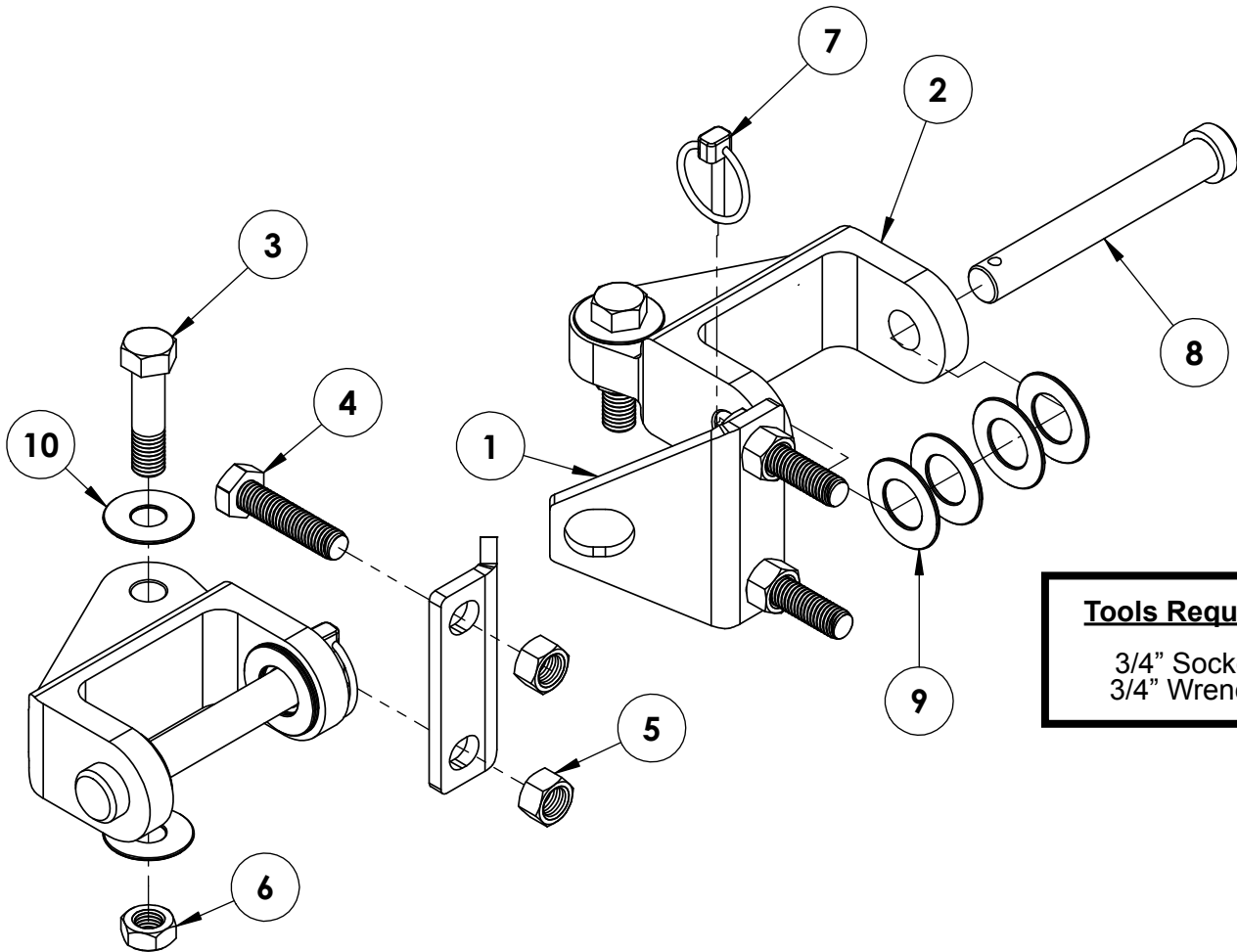




BLUE OX

BX88301

Rugged Ridge XHD Bumper Adapter Installation Instructions



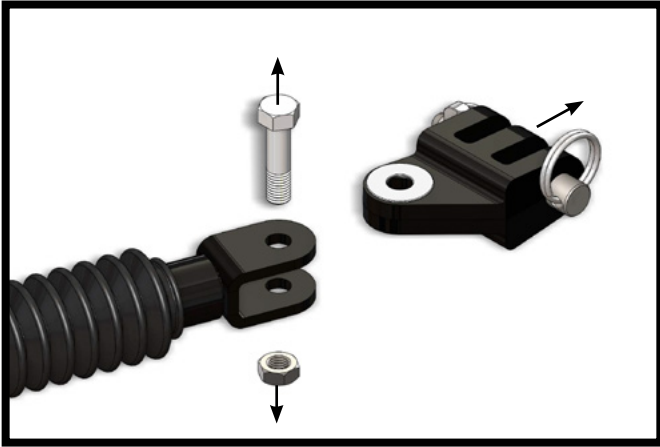
Tools Required
3/4" Socket
3/4" Wrench

Item No.	Part No.	Description	Qty.
1.....	101-8428.....	Safety Cable Bracket.....	2
2.....	102-7497.....	R. Ridge Offset Double Lug.....	2
3.....	201-0645.....	1/2"-13 x 2" Hex Head Bolt, Short Thread.....	2
4.....	201-0415.....	12MM-1.75 x 50MM Hex Head Bolt, Grade 8.8, ZP.....	4
5.....	202-0117.....	12MM-1.75 Hex Nut, ZP.....	4
6.....	202-0143.....	1/2"-13 Essna Jam Nut, ZP.....	2
7.....	229-0829.....	3/16" x 1-1/4" Lynch Pin.....	2
8.....	229-0950.....	5/8" Dia x 4-3/8" Eff. Pin, ZP.....	2
9.....	290-0360.....	Plastic Spacer, 1/16" x 1-1/2" Dia.....	8
10.....	290-0381.....	Washer, .523 ID x 1.363 OD.....	4

Important:

Use only genuine factory replacement parts on your adapter. Do **NOT** substitute homemade or non-typical parts. If a bolt is lost or in need of replacement, for your safety, be sure to use a replacement bolt of the same grade (In most cases it will be Grade 5, please reference the parts list above). Replacement parts may be ordered through your nearest Blue Ox® Dealer or Distributor. Failing to follow and/or altering these installation instructions in either installation or required equipment will void the manufacturer's warranty. Towing behind a non-motorized vehicle will void the warranty.

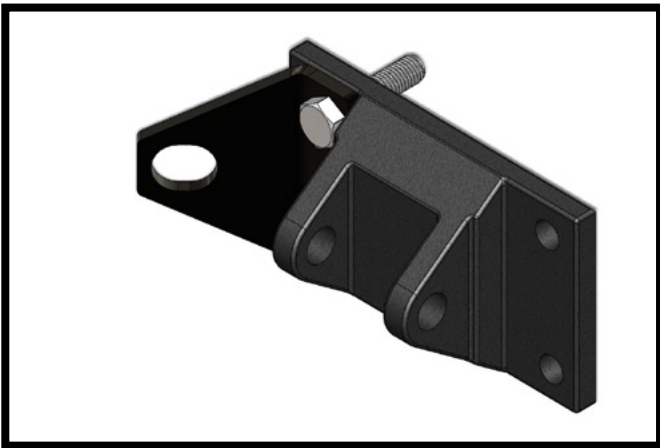
BX88301
Rugged Ridge XHD Bumper Adapter
Installation Instructions



1. Using a 3/4" socket and wrench, remove the existing 1/2"-13 bolt and 1/2"-13 jam nut from the tow bar leg. Remove the existing lug and washers from the tow bar leg. Do this on both tow bar legs.



2. Install the offset double lug onto the tow bar leg with the new washers, 1/2"-13 x 2" bolt and 1/2"-13 jam nut provided. Tighten the bolt until the lug is tight against the washers, but can still freely move side to side. Do this on both tow bar legs.



3. **Optional Safety Cable Bracket:** Remove the two (2) inside existing bolts from the bumper d-link bracket. Install the safety cable bracket onto the d-link bracket with the 12MM x 50MM bolts and 12MM hex nuts supplied. Do this on both sides of the vehicle.



4. Install the tow bar onto the bumper d-link brackets with the 5/8" pin and lynch pin. Using the plastic spacers as required in between the lug and d-link as shown.
Note: Always install the pin so the lynch pin is towards the inside of the vehicle as shown.

BX88301
Rugged Ridge XHD Bumper Adapter
Installation Instructions

5. Continue hooking up the tow bar and safety cables per manufacturer's instructions.

