



# BX3833

## 2012-15 Volkswagen Passat SEL/SE (Includes TDI) Installation Instructions

**Attachment Tab Height: 14-1/2"**

**Attachment Tab Width: 24"**

**Please read BOTH these Installation Instructions and the General Instructions prior to installing or operating this equipment.**

1. Blue Ox® towing products and accessories are intended to be installed by Blue Ox® Dealers who are familiar with our products and have the equipment and knowledge necessary to do "it work".
2. Many Blue Ox® baseplates are designed to use existing holes and hardware to mount the baseplate to the towed vehicle. Even though bolts are there, do not assume they are adequate for baseplate mounting. Always use the hardware supplied in the hardware kit and existing hardware as specified in the installation instructions.

<b>Bolt Torque Specifications</b>		
Torque in Foot-Pounds for Inch Bolts		
<b>Bolt Size</b>	<b>Grade 5</b>	<b>Grade 8</b>
1/4"	10	14
5/16"	19	29
3/8"	33	47
7/16"	54	78
1/2"	78	119
5/8"	154	230
3/4"	257	380



<b>Bolt Torque Specifications</b>		
Torque in Foot-Pounds for Metric Bolts		
<b>Bolt Size</b>	<b>Grade 8.8</b>	<b>Grade 10.9</b>
6MM	6	8
8MM	16	22
10MM	31	40
12MM	54	70
14MM	89	117
16MM	161	230
18MM	222	318

**Reference your vehicle owner's manual for manufacturer's towing specifications.**

WARNING

Failure to read and follow these instructions could result in separation of the towed vehicle from the tow bar, causing property damage, loss of towed vehicle, personal injury or death.

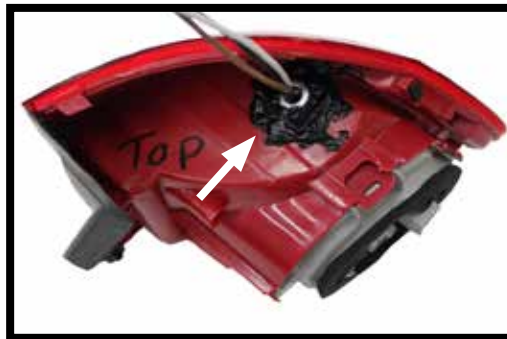
BX3833  
2012-15 Volkswagen Passat SEL/SE (Includes TDI)  
Installation Instructions

**Removable Tabs:** Use only with motorhome mount tow bars or the BX8833 or BX88151 adapters. Removable tabs with only one hole will not attach to car mount tow bars or other adapters. The Acclaim may only be used with removable tab baseplates that have 23" or greater spaced tabs. The Adventurer may only be used with baseplates that have 16" – 36" spaced removable tabs. The Ambassador may only be used with 24" spaced removable tabs.

**Instruction Notes:** The front fascia, front bumper, styrofoam bumper padding, headlights and temperature sensor are removed and reinstalled for the baseplate installation. Some drilling and trimming is required.

The dimensional variations between otherwise identical vehicles can be considerable. While the baseplate was designed for easy installation, it may be necessary to tailor the baseplate slightly to compensate for vehicle manufacturer's tolerances. These minor adjustments may include filing a hole slightly, bending electrical rods or bending end plates.

The BX8869 Tail Light Wiring Kit is recommended for this vehicle.



Drill a hole according to the tail light  
wiring kit instructions.

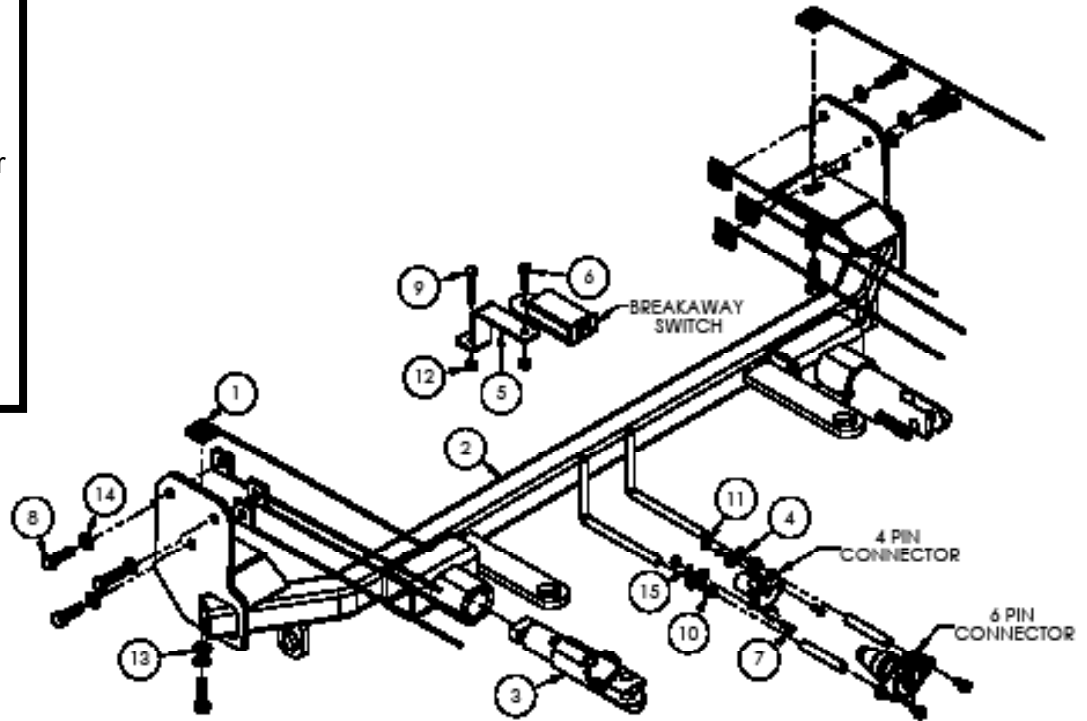
### **NOTICE**

- Handling of some cosmetic parts when installing this product may require the use of protective covers, rags, specialty tools, etc. to prevent damage.
- When using power drills be aware of the dangers of torque and drill bit length.
- When using a reciprocating saw be aware of objects behind the cutting surface.
- Use a good quality paint to spray cut edges of frame to prevent rusting.
- Be sure that **ALL** electrical connections are plugged in and accessories are functioning properly before reinstalling the fascia.
- The baseplate is computer tested to your vehicle's GVWR, exceeding this weight will void the manufacturer's warranty.
- Be sure to use a sufficient amount of Loctite® Red on all bolt threads before tightening. Tighten all bolts according to the torque chart provided.
- Dealer or installer be certain the user receives these instruction sheets.
- If the baseplate is in an accident, it must be replaced. **DO NOT** use it again! An accident can cause unseen damage and using it again could result in more damage or serious injury. **DO NOT** use the baseplate if it is damaged or missing parts.

BX3833  
2012-15 Volkswagen Passat SEL/SE (Includes TDI)  
Installation Instructions

**Tools Required**

Large Vise Grip  
Flat Screwdriver  
Utility Knife  
Phillips Screwdriver  
Torque Wrench  
Drill  
Tape Measure  
Loctite® RED  
13/32" Drill Bit  
9/32" Drill Bit  
25 Torx  
9/16" Wrench



Item No.	Part No.	Description	Qty.
1.....	61-5208 .....	3/8"-16 Nut Plate with 14" Wire .....	8
2.....	61-7044 .....	BX3833 Baseplate.....	1
3.....	62-3468 .....	Attachment Tab.....	2
4.....	101-5822 .....	4 Way Connector Adapter .....	2
5.....	102-7353 .....	Breakaway Bracket .....	1
6.....	201-0071 .....	1/4"-20 x 1" Hex Head Bolt, Grade 5, ZP .....	1
7.....	201-0192 .....	#10-32 1/2" Slotted Round Head Screw.....	2
8.....	201-0368 .....	3/8"-16 x 1-1/4" Hex Head Bolt, Grade 5, ZP .....	8
9.....	201-0448 .....	1/4"-20 x 1-1/2" Hex Head Bolt, Grade 5, ZP .....	1
10.....	201-0979 .....	#12-14 x 1" Self Drilling Screw, ZP.....	2
11.....	202-0047 .....	#10-32 Hex Nut .....	2
12.....	202-0102 .....	1/4"-20 Hex Nylon Nut, ZP .....	2
13.....	203-0003 .....	3/8" Flat Washer, ZP.....	2
14.....	203-0010 .....	3/8" Lock Washer, ZP .....	8
15.....	203-0054 .....	#10 Lock Washer.....	2
16.....	226-0046(not shown) .....	Class III Safety Cables .....	2
17.....	229-0359(not shown) .....	3/8" Quicklink, ZP .....	4
18.....	290-0437(not shown) .....	Black Cap Plug Receiver.....	2
19.....	293-1339(not provided).....	Breakaway Switch .....	1
20.....	294-0805(not provided).....	4 Pin Connector.....	1
21.....	294-0902(not provided).....	6 Pin Connector.....	1

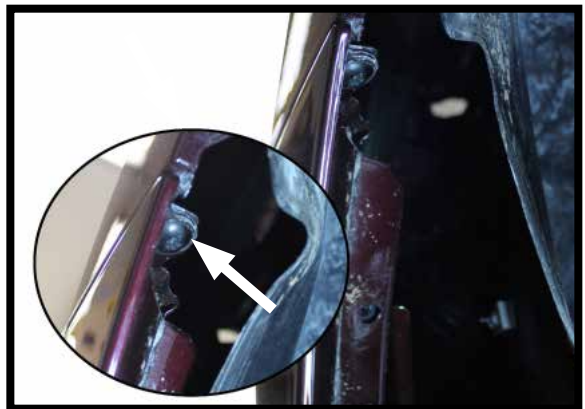
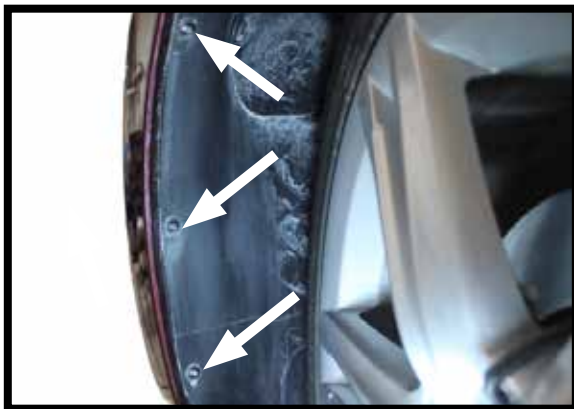
**Important:**

Use only genuine factory replacement parts on your baseplate. Do **NOT** substitute homemade or non-typical parts. If a bolt is lost or in need of replacement, for your safety and the preservation of your baseplate, be sure to use a replacement bolt of the same grade (In most cases it will be Grade 5, please reference the parts list above). Replacement parts may be ordered through your nearest Blue Ox® Dealer or Distributor. Failing to follow and/or altering these installation instructions in either installation or required equipment will void the manufacturer's warranty. Towing behind a non-motorized vehicle will void the warranty.

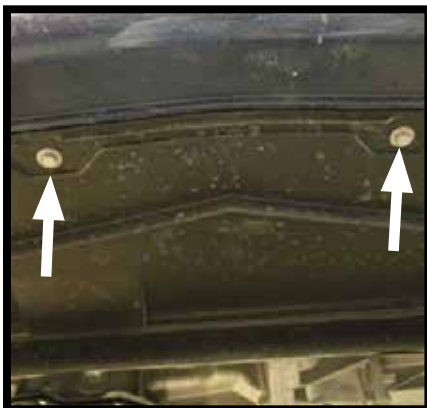
BX3833  
2012-15 Volkswagen Passat SEL/SE (Includes TDI)  
Installation Instructions



1. Using a Torx 25 remove the three (3) screws that are located in the front area, underneath the hood. There is one (1) screw located on the outer edge of the driver side and two (2) on the passenger side. On the passenger side, one (1) is located on the outer edge and the other is located just to the left of the center of the vehicle.



2. Remove the three (3) screws in the front wheel well area using a Torx 25. Do this on **BOTH** sides of the vehicle.
3. Pull the wheel well liner back. Using a Torx 25 remove the screw that is located underneath. Do this on **BOTH** sides of the vehicle.



4. On the underside of the front fascia there are seven (7) screws that need to be removed using a Torx 25. There are three (3) on both the driver side and the passenger side, plus one (1) in the center of the vehicle.

BX3833  
2012-15 Volkswagen Passat SEL/SE (Includes TDI)  
Installation Instructions



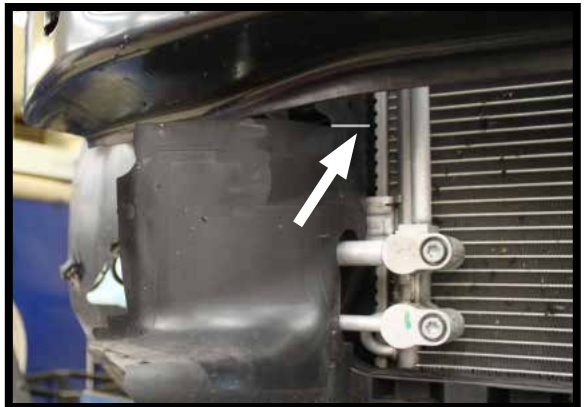
5. Gently, yet firmly, pull outward on the front fascia to remove. Next, remove headlights on **BOTH** sides of the vehicle.



6. Pull the styrofoam bumper padding off and place to the side for reinstallation after the baseplate is installed.



7. On the driver side, lift the tab up using a flat screwdriver and slide the temperature sensor off. Set aside for reinstallation later.



8. Cut straight across on the top of the plastic tab. After the cut has been made, lift up and remove the tab. Do this on **BOTH** sides.



9. Place the baseplate under the bumper centering the slot on the bottom of the baseplate with the existing hole in the bumper. Securely clamp the baseplate into position. Take extra care on the passenger side not to hit the lines. NOTE: If the horn is in the way, gently bend it outward.



BX3833  
2012-15 Volkswagen Passat SEL/SE (Includes TDI)  
Installation Instructions



10. Verify the baseplate is level and install the 3/8"-16 x 1-1/4" hex head bolts, 3/8" lock washers and 3/8" flats washers on the bottom slot. Do this on **BOTH** sides of the vehicle.

11. Using a 13/32" drill bit and using the baseplate as a template, drill the three (3) sides holes. Do this on **BOTH** sides of the vehicle.

12. Reattach the temperature sensor and front bumper padding.



13. Hold the front fascia as close to the original state as possible and mark where the cutout for the convenience links, attachment tabs and breakaway switch, is so equipped, will be located.



14. You may place the breakaway bracket anywhere on the vehicle frame. Using a 9/32" drill bit, drill a hole into the frame.

Set the front fascia down and notch the grill to allow for proper clearance.

BX3833  
2012-15 Volkswagen Passat SEL/SE (Includes TDI)  
Installation Instructions



15. Attach the permanent baseplate safety cables to the provided convenience link on the baseplate. The photo above shows the recommended installation of the cables to frame of vehicle. Additional options may interfere with suggested mounting; in this case, secure the cables to a solid piece of the frame as described in the instructions included with the permanent baseplate safety cables. Be sure the safety cables do not rub against any hoses or moving parts. Do this on **BOTH** sides of the vehicle.

16. Reinstall front fascia.



# General Information

1. It is the owner's responsibility to inspect all towing equipment for cracked welds, missing or worn parts and loose bolts before each towing trip. Be sure to use Loctite® Red on all bolts and tighten to the recommended specifications.
2. It is the owner's responsibility to hook up all towing equipment per manufacturer's instructions/ recommendations.
3. Remove the attachment tabs when not in use (if applicable).

## Notice To Baseplate Installer

### 1. It is YOUR responsibility to watch for:

- Oil cooler and air conditioner lines
- Electrical wires and hoses
- Missing parts or attaching points on the frame

\*\* If the baseplate is improperly installed and is against a wire or hose, it could cause fluid leaks or electrical shorts some time after the actual baseplate installation.

## Permanent Baseplate Safety Cable Installation

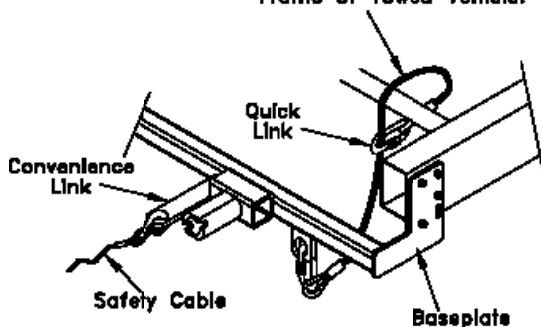
Permanent baseplate safety cables are strongly recommended when towing a vehicle with a tow bar. The principle function of the permanent baseplate safety cables is to prevent the towed vehicle from breaking loose in the event the connection between the frame of the towed vehicle and the baseplate fails or becomes disconnected. The cables must be connected from the baseplate to the frame rail or cross member of the vehicle's frame. The illustrations below show the possible arrangements recommended by Blue Ox®. Each permanent baseplate safety cable must have an adequate weight rating for the towing system. The weight rating of the two (2) cables together will not qualify.

***Do not mount the permanent baseplate safety cables against wires, hoses or brake lines.***

These permanent baseplate safety cables should remain installed as long as the baseplate is installed on the vehicle. Permanent baseplate safety cables are to be used in conjunction with, and NOT a replacement for legally required safety cables attaching the towed vehicle to the towing vehicle.

### OPTION #1

Permanent Baseplate Safety Cables to Cross Member or Frame of Towed Vehicle.



### OPTION #2

Permanent Baseplate Safety Cables to Cross Member or Frame of Towed Vehicle.

