



BX2675

2017-18 Ford F-250 & F-350 Pick-up (Includes Super Duty & ACC) Installation Instructions

Attachment Tab Height: 24-1/2"

Attachment Tab Width: 34-1/2"

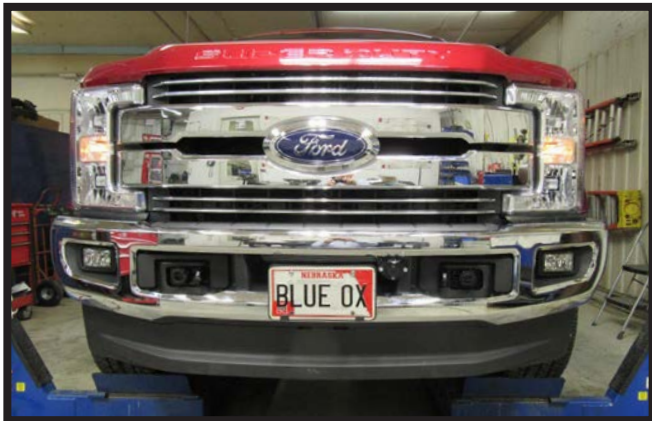
Please read BOTH these Installation Instructions and the General Information sheet prior to installing or operating this equipment.

1. Blue Ox® towing products and accessories are intended to be installed by Blue Ox® Dealers who are familiar with our products and have the equipment and knowledge necessary to do "it work".
2. Many Blue Ox® baseplates are designed to use existing holes and hardware to mount the baseplate to the towed vehicle. Even though bolts are there, do not assume they are adequate for baseplate mounting. Always use the hardware supplied in the hardware kit and existing hardware as specified in the installation instructions.

Bolt Torque Specifications

Torque in Foot-Pounds for Inch Bolts

Bolt Size	Grade 5	Grade 8
1/4"	10	14
5/16"	19	29
3/8"	33	47
7/16"	54	78
1/2"	78	119
5/8"	154	230
3/4"	257	380



Bolt Torque Specifications

Torque in Foot-Pounds for Metric Bolts

Bolt Size	Grade 8.8	Grade 10.9
6MM	6	8
8MM	16	22
10MM	31	40
12MM	54	70
14MM	89	117
16MM	161	230
18MM	222	318

Reference your vehicle owner's manual for manufacturer's towing specifications.

WARNING

Failure to read and follow these instructions could result in separation of the towed vehicle from the tow bar, causing property damage, loss of towed vehicle, personal injury or death.

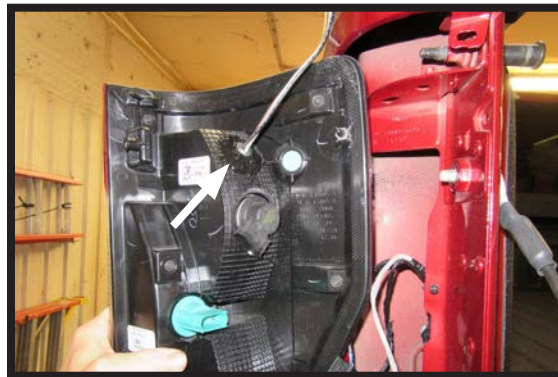
BX2675
2017-18 Ford F-250 & F-350 Pick-up
(Includes Super Duty & ACC)
Installation Instructions

Instruction Notes: The fascia is removed and reinstalled for the baseplate installation. Some drilling and trimming is required.

Place all components that are removed on a flat, sturdy surface. All items will be reinstalled unless otherwise noted after the baseplate is installed.

The dimensional variations between otherwise identical vehicles can be considerable. While the baseplate was designed for easy installation, it may be necessary to tailor the baseplate slightly to compensate for vehicle manufacturer's tolerances.

The BX8869 Tail Light Wiring Kit is recommended for this vehicle. For models with LED light the BX8848 Tail Light Wiring Kit is recommended.



Drill a hole according to the tail
light wiring kit instructions.

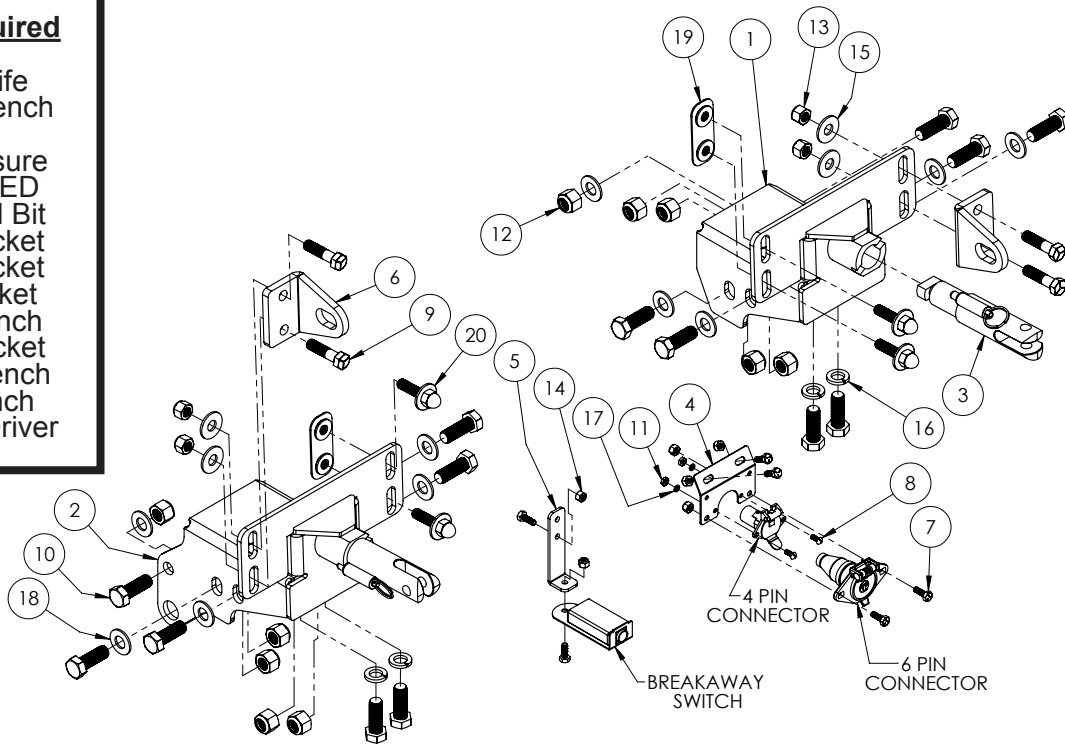
NOTICE

- Handling of some cosmetic parts when installing this product may require the use of protective covers, rags, specialty tools, etc. to prevent damage.
- When using power drills be aware of the dangers of torque and drill bit length.
- When using a reciprocating saw be aware of objects behind the cutting surface.
- Use a good quality paint to spray cut edges of frame to prevent rusting.
- Be sure that **ALL** electrical connections are plugged in and accessories are functioning properly before reinstalling the fascia.
- The baseplate is computer tested to your vehicle's GVWR, exceeding this weight will void the manufacturer's warranty.
- Be sure to use a sufficient amount of Loctite® Red on all bolt threads before tightening. Tighten all bolts according to the torque chart provided unless specified.
- Dealer or installer be certain the user receives these instruction sheets.
- If the baseplate is in an accident, it must be replaced. **DO NOT** use it again! An accident can cause unseen damage and using it again could result in more damage or serious injury. **DO NOT** use the baseplate if it is damaged or missing parts.

BX2675
2017-18 Ford F-250 & F-350 Pick-up
(Includes Super Duty & ACC)
Installation Instructions

Tools Required

Utility Knife
 Torque Wrench
 Drill
 Tape Measure
 Loctite® RED
 11/16" Drill Bit
 15MM Socket
 18MM Socket
 7/16" Socket
 7/16" Wrench
 15/16" Socket
 15/16" Wrench
 3/4" Wrench
 5/16" Nut Driver



Item No.	Part No.	Description	Qty.
1	61-7972	BX2675 Baseplate, DS	1
2	61-7973	BX2675 Baseplate, PS	1
3	62-3468	Attachment Tab Assembly with Hole	2
4	101-9462	Electrical Bracket, 30° Bend	1
5	102-7186	Breakaway Bracket	1
6	102-7769	BX2675 Convenience Link	2
7	201-0050	1/4"-20 x 3/4" Hex Head Bolt, Grade 5, ZP	6
8	201-0192	#10-32 1/2" Round Slotted Head Screw	2
9	201-0283	1/2"-13 x 2" Hex Head Bolt, Grade 5, ZP	4
10	201-0286	5/8"-11 x 1-3/4" Hex Head Bolt, Grade 5, ZP	14
11	202-0047	#10-32 Hex Nut	2
12	202-0064	5/8"-11 Hex Nylon Insert Lock Nut, ZP	10
13	202-0094	1/2"-13 Hex Nylon Insert Lock Nut, ZP	4
14	202-0102	1/4"-20 Hex Nylon Nut, ZP	6
15	203-0005	1/2" Flat Washer, ZP	4
16	203-0013	5/8" Lock Washer, ZP	4
17	203-0054	#10 Lock Washer, ZP	2
18	203-0106	5/8" SAE Flat Washer, ZP	10
19	Existing	Nut Plate	2
20	Existing	12MM Bolt	4
	226-0049(not shown)	Class IV Safety Cables	2
	229-0512(not shown)	1/2" Quicklink, ZP	2
	290-0437(not shown)	Black Cap Plug Receiver	2

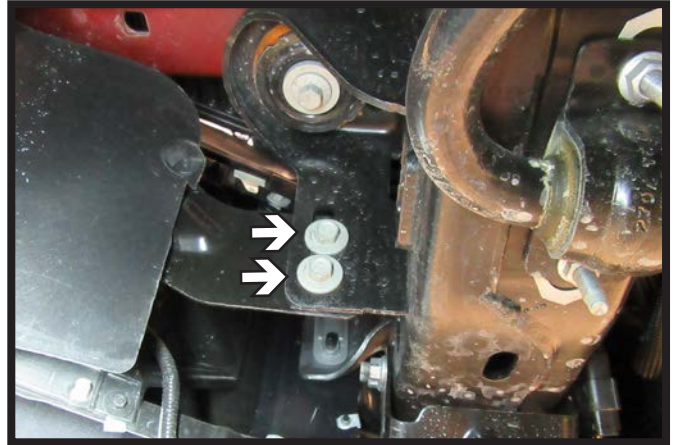
Important:

Use only genuine factory replacement parts on your baseplate. Do **NOT** substitute homemade or non-typical parts. If a bolt is lost or in need of replacement, for your safety and the preservation of your baseplate, be sure to use a replacement bolt of the same grade (In most cases it will be Grade 5, please reference the parts list above). Replacement parts may be ordered through your nearest Blue Ox® Dealer or Distributor. Failing to follow and/or altering these installation instructions in either installation or required equipment will void the manufacturer's warranty. Towing behind a non-motorized vehicle will void the warranty.

BX2675
2017-18 Ford F-250 & F-350 Pick-up
(Includes Super Duty & ACC)
Installation Instructions



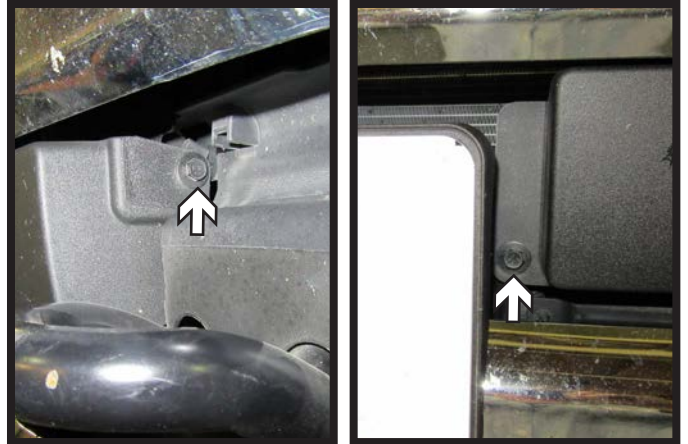
1. Underneath the vehicle, behind the fascia unplug the connector that disconnects everything that goes with the bumper.



2. Behind the bumper on the frame by the headlights there are two (2) bolts that need to be removed using a 15MM socket, do this on both sides of the vehicle.

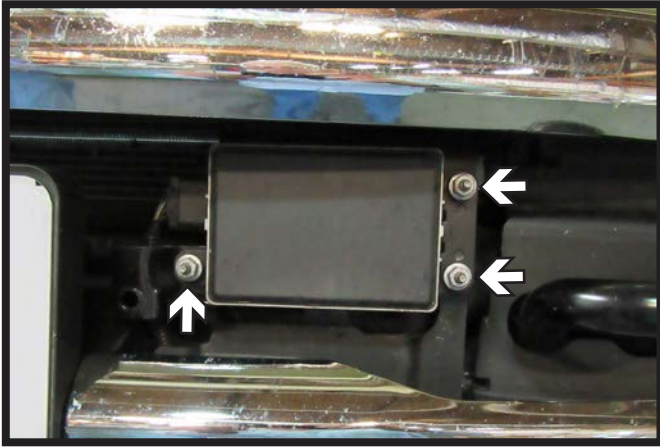


3. Remove the two (2) clips from each side above the tow hook. Do this on both sides of the vehicle.

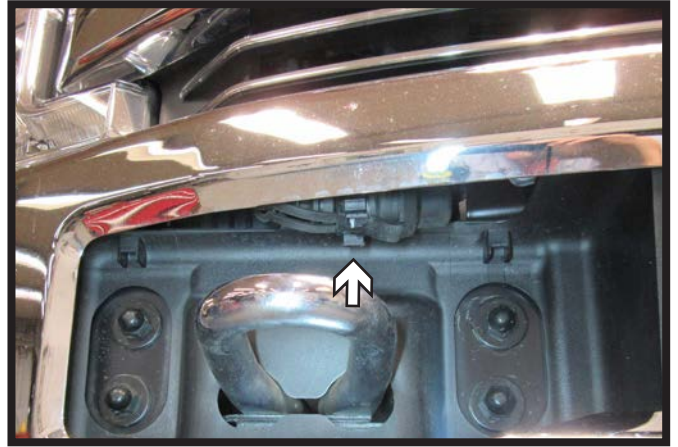


4. **Models with Adaptive Cruise Control (ACC):** Using a 10MM socket, remove the two (2) bolts from the cover of the ACC on the driver side of the vehicle.

BX2675
2017-18 Ford F-250 & F-350 Pick-up
(Includes Super Duty & ACC)
Installation Instructions



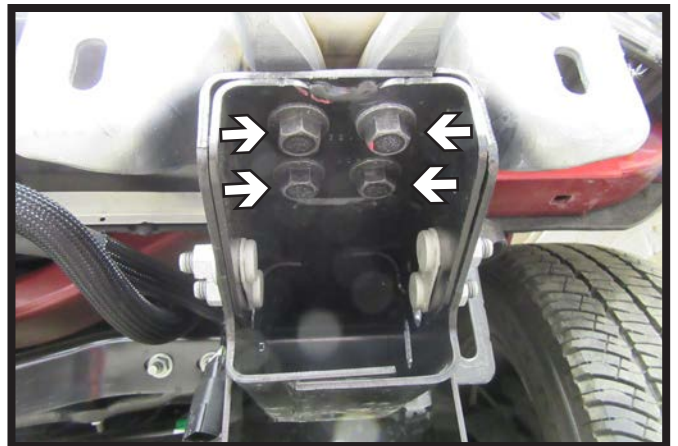
5. **Models with ACC:** Using an 11MM socket, remove the three (3) bolts holding the ACC onto the driver side of the vehicle. Unplug, remove, and set aside the ACC to be reinstalled later.



6. On the passenger side of the vehicle pull the indicated plug through the backside of the fascia and let hang.

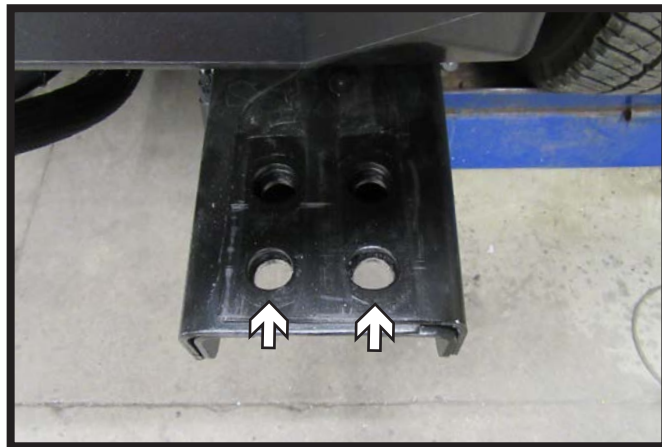
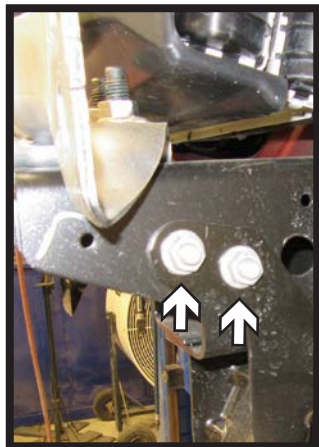
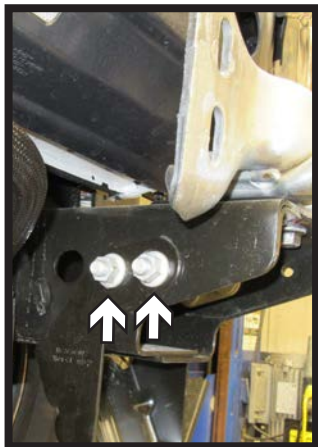


7. Using a 18MM socket, remove the four (4) bolts around the tow hook. Do this on both sides of the vehicle. Pull the bumper forward and set aside to be reinstalled later.



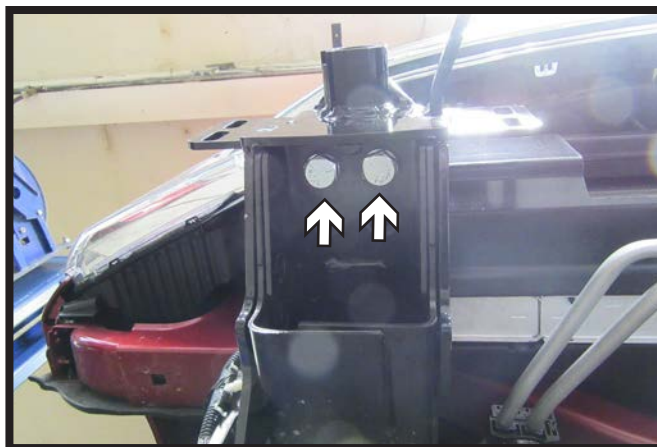
8. Using an 18MM socket, remove the four (4) bolts from the bottom of the tow hooks on both sides of the vehicle.

BX2675
2017-18 Ford F-250 & F-350 Pick-up
(Includes Super Duty & ACC)
Installation Instructions



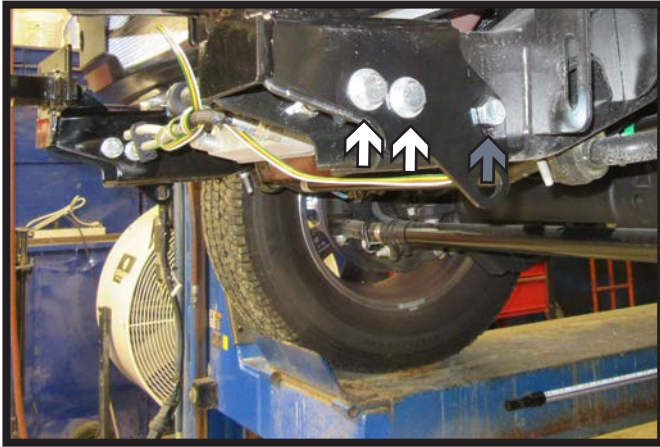
9. Remove the two (2) bolts from each side of the bracket near the tow hook by using an 18MM socket. Do this on both sides of the vehicle.

10. Before installing the baseplate use a 11/16" drill bit to drill out the front two (2) holes on the tow hook bracket. Do this on both sides of the vehicle.



11. Slide the baseplate on, align with the existing front tow hook holes. Bolt on first using two (2) of the 5/8" x 1-3/4" bolts, and lock washers.

BX2675
2017-18 Ford F-250 & F-350 Pick-up
(Includes Super Duty & ACC)
Installation Instructions



12. Use three (3) 1-3/4" bolts to attach the baseplate towards the outside of the frame. Use a flat washer on the outside and nylon lock nut on the inside for the front two (2) bolts indicated with a white arrows and a flat washer and nylon lock nut on the inside for the third bolt indicated with a gray arrow. Towards the inside of the frame use two (2) 1-3/4" bolts to attach the baseplate with the washer on the outside and nylon lock nut on the inside. Do this on both sides of the vehicle.

**** Use Loctite® Red on all bolt threads and tighten all bolts to the appropriate torque.**



13. Using a utility knife remove the marked area on both sides of the vehicle to allow the baseplate to fit through the hole in the fascia (left). Then remove the marked area on both sides of the fascia towards the inside near the licence plate (right).

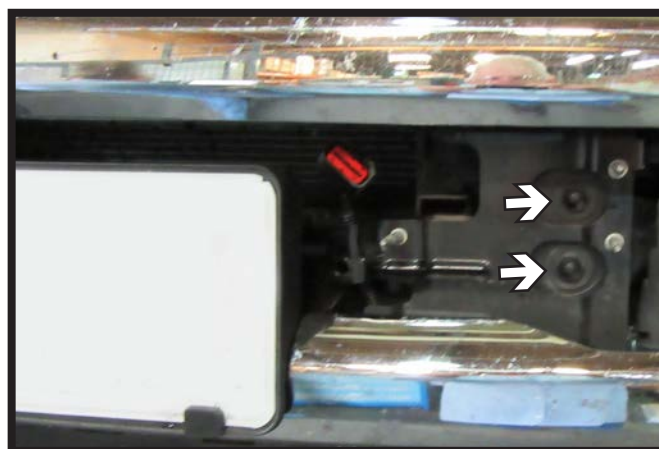
BX2675
2017-18 Ford F-250 & F-350 Pick-up
(Includes Super Duty & ACC)
Installation Instructions



14. **Optional:** On the backside of the fascia there are two (2) existing holes above the license plate, use either hole to attach the bracket for the breakaway switch.

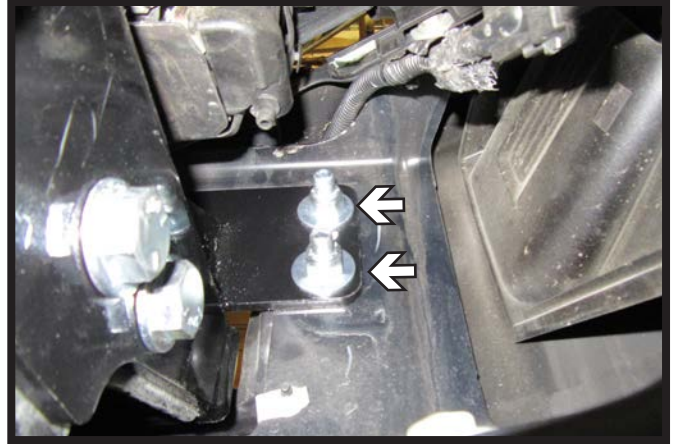
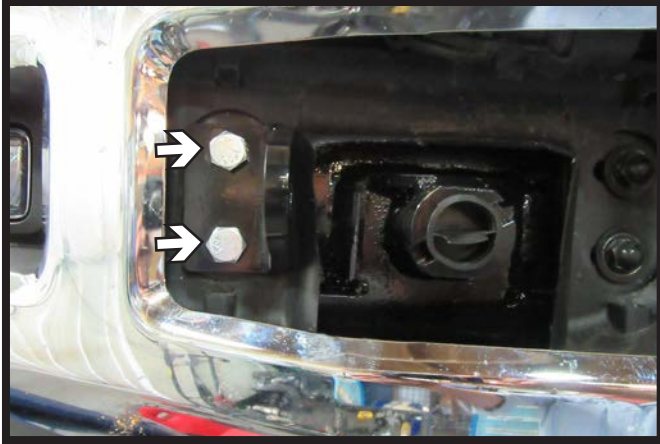


15. Attach the permanent baseplate safety cables to the provided convenience link on the baseplate. The photo above shows the recommended installation of the cables to frame of vehicle. Additional options may interfere with suggested mounting; in this case, secure the cables to a solid piece of the frame as described in the General Information sheet. Be sure the safety cables do not rub against any hoses or moving parts. Do this on **BOTH** sides of the vehicle.



16. Reinstall bumper, insert the existing two (2) bolts into the inside holes on both sides of the vehicle and reconnect the wiring.

BX2675
2017-18 Ford F-250 & F-350 Pick-up
(Includes Super Duty & ACC)
Installation Instructions



17. Insert two (2) 1/2" x 2" bolts with a flat washer and nylon lock nut on the back side to attach the convenience link. Do this on both sides of the vehicle.



18. Trim the tow hook bolt cover as shown before reinstalling to allow room for the convenience link (left). Do this for both sides of the vehicle. **Note:** For vehicles with ACC, do not reinstall the bolt cover on the driver side of the vehicle (right).

BX2675
2017-18 Ford F-250 & F-350 Pick-up
(Includes Super Duty & ACC)
Installation Instructions



19. **Models with ACC:** Reinstall ACC and cover to the driver side of the vehicle.



General Information

1. **It is the owner's responsibility to inspect all towing equipment for cracked welds, missing or worn parts and loose bolts before each towing trip.** Be sure to use Loctite® Red on all bolts and tighten to the recommended specifications.
2. **It is the owner's responsibility to hook up all towing equipment per manufacturer's instructions/ recommendations.**
3. Remove the attachment tabs when not in use (if applicable).

Notice To Baseplate Installer

1. It is YOUR responsibility to watch for:

- Oil cooler and air conditioner lines
- Electrical wires and hoses
- Missing parts or attaching points on the frame

** If the baseplate is improperly installed and is against a wire or hose, it could cause fluid leaks or electrical shorts some time after the actual baseplate installation.

Permanent Baseplate Safety Cable Installation

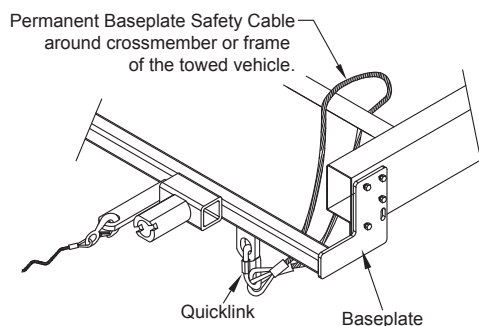
Permanent baseplate safety cables are strongly recommended when towing a vehicle with a tow bar. The principle function of the permanent baseplate safety cables is to prevent the towed vehicle from breaking loose in the event the connection between the frame of the towed vehicle and the baseplate fails or becomes disconnected. The cables must be connected from the baseplate to the frame rail or cross member of the vehicle's frame. The illustrations below show the possible arrangements recommended by Blue Ox®. Each permanent baseplate safety cable must have an adequate weight rating for the towing system. The weight rating of the two (2) cables together will not qualify.

Do not mount the permanent baseplate safety cables against wires, hoses or brake lines.

These permanent baseplate safety cables should remain installed as long as the baseplate is installed on the vehicle. Permanent baseplate safety cables are to be used in conjunction with, and NOT a replacement for legally required safety cables attaching the towed vehicle to the towing vehicle.

Option #1

(Baseplates with Convenience Link Tabs)



Option #2

(Baseplates with out Convenience Link Tabs)

