



**BX2639**  
 2013-18 Ford C-Max  
 (Includes Hybrid & Energi)  
 Installation Instructions

**Attachment Tab Height: 12"**

**Attachment Tab Width: 20"**

**Please read BOTH these Installation Instructions and the General Information sheet prior to installing or operating this equipment.**

1. Blue Ox® towing products and accessories are intended to be installed by Blue Ox® Dealers who are familiar with our products and have the equipment and knowledge necessary to do "it work".
2. Many Blue Ox® baseplates are designed to use existing holes and hardware to mount the baseplate to the towed vehicle. Even though bolts are there, do not assume they are adequate for baseplate mounting. Always use the hardware supplied in the hardware kit and existing hardware as specified in the installation instructions.

**Bolt Torque Specifications**  
 Torque in Foot-Pounds for Inch Bolts

Bolt Size	Grade 5	Grade 8
1/4"	10	14
5/16"	19	29
3/8"	33	47
7/16"	54	78
1/2"	78	119
5/8"	154	230
3/4"	257	380



**Bolt Torque Specifications**  
 Torque in Foot-Pounds for Metric Bolts

Bolt Size	Grade 8.8	Grade 10.9
6MM	6	8
8MM	16	22
10MM	31	40
12MM	54	70
14MM	89	117
16MM	161	230
18MM	222	318

**Reference your vehicle owner's manual for manufacturer's towing specifications.**

**! WARNING**

Failure to read and follow these instructions could result in separation of the towed vehicle from the tow bar, causing property damage, loss of towed vehicle, personal injury or death.

BX2639  
2013-18 Ford C-Max (Includes Hybrid & Energi)  
Installation Instructions

**Instruction Notes:** The fascia, windshield washer fluid reservoir (Hybrid Only), headlights and horn are removed and reinstalled for the baseplate installation. Some drilling and trimming is required.

Place all components that are removed on a flat, sturdy surface. All items will be reinstalled unless otherwise noted after the baseplate is installed.

The dimensional variations between otherwise identical vehicles can be considerable. While the baseplate was designed for easy installation, it may be necessary to tailor the baseplate slightly to compensate for vehicle manufacturer's tolerances.

The BX8869 Tail Light Wiring Kit is recommended for this vehicle.

**Note:** For 2017 Models the tail light hole should be drilled into the top of the taillight housing as the break light and turn signal have swapped positions.



Drill a hole according to the tail light wiring kit instructions.

### **NOTICE**

- Handling of some cosmetic parts when installing this product may require the use of protective covers, rags, specialty tools, etc. to prevent damage.
- When using power drills be aware of the dangers of torque and drill bit length.
- When using a reciprocating saw be aware of objects behind the cutting surface.
- Use a good quality paint to spray cut edges of frame to prevent rusting.
- Be sure that **ALL** electrical connections are plugged in and accessories are functioning properly before reinstalling the fascia.
- The baseplate is computer tested to your vehicle's GVWR, exceeding this weight will void the manufacturer's warranty.
- Be sure to use a sufficient amount of Loctite® Red on all bolt threads before tightening. Tighten all bolts according to the torque chart provided.
- Dealer or installer be certain the user receives these instruction sheets.
- If the baseplate is in an accident, it must be replaced. **DO NOT** use it again! An accident can cause unseen damage and using it again could result in more damage or serious injury. **DO NOT** use the baseplate if it is damaged or missing parts.

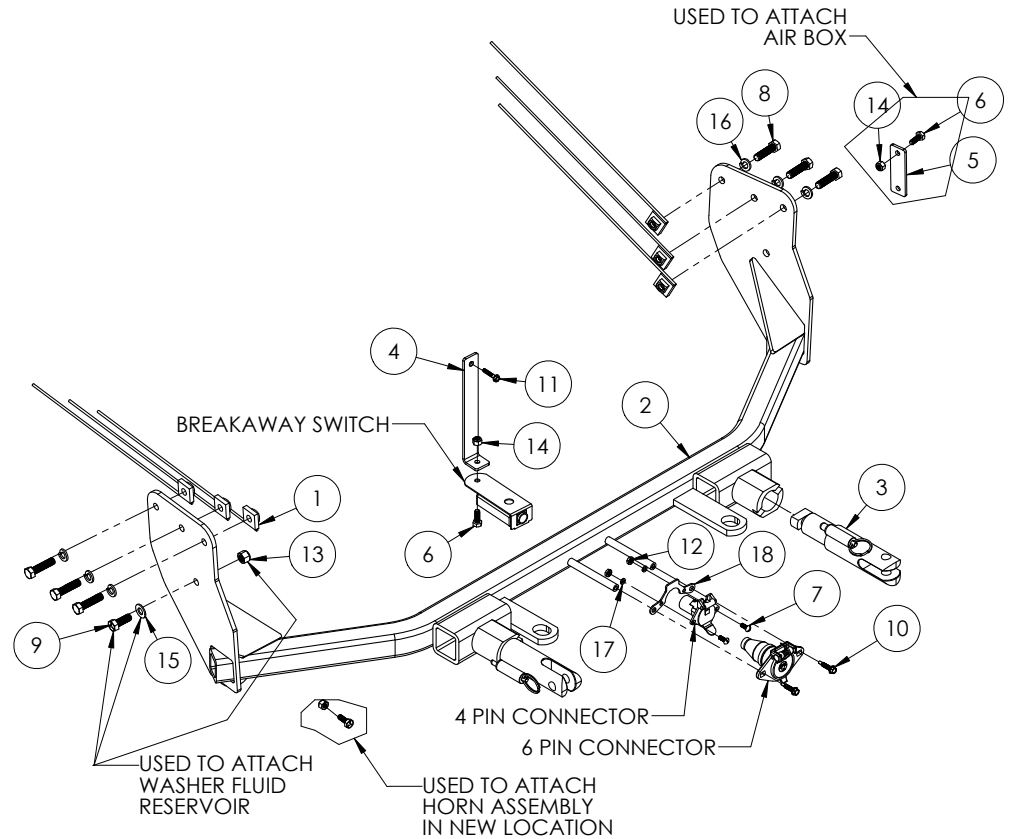
# BX2639

## 2013-18 Ford C-Max (Includes Hybrid & Energi)

### Installation Instructions

#### **Tools Required**

Large Vise Grip  
 Flat Screwdriver  
 Utility Knife  
 Torque Wrench  
 Drill  
 Tape Measure  
 Loctite® RED  
 13/32" Drill Bit  
 1-1/4" Hole Saw  
 T27 Torx  
 8MM Socket  
 10MM Socket  
 7/16" Socket  
 7/16" Wrench  
 9/16" Socket  
 9/16" Wrench

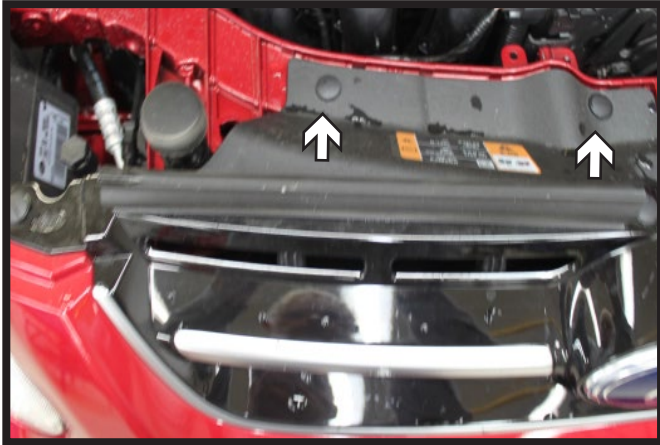


Item No.	Part No.	Description	Qty.
1.....	61-5208.....	3/8"-16 Nut Plate w/14" Wire .....	6
2.....	61-7104.....	BX2639 Baseplate.....	1
3.....	62-3468.....	Attachment Tab Assembly with Hole .....	2
4.....	102-7282.....	Breakaway Bracket .....	1
5.....	102-7419.....	1/8" Attachment Plate .....	1
6.....	201-0050.....	1/4"-20 x 3/4" Hex Head Bolt, Grade 5, ZP .....	3
7.....	201-0192.....	#10-32 x 1/2" Slot Round Head Screw .....	2
8.....	201-0440.....	3/8"-16 x 1-1/2" Hex Head Bolt, Grade 5, ZP .....	6
9.....	201-0443.....	3/8"-16 x 1" Hex Head Bolt, Grade 5, ZP .....	1
10.....	201-0979.....	#12-14 x 1" Self Drilling Screw, ZP.....	2
11.....	201-0654.....	#10-16 x 1" Self Drilling Screw .....	1
12.....	202-0047.....	#10-32 Hex Nut .....	2
13.....	202-0090.....	3/8"-16 Hex Nylon Lock Nut, ZP.....	1
14.....	202-0102.....	1/4"-20 Hex Nylon Nut, ZP .....	3
15.....	203-0003.....	3/8" Flat Washer, ZP.....	1
16.....	203-0010.....	3/8" Lock Washer, ZP .....	6
17.....	203-0054.....	#10 Lock Washer.....	2
18.....	299-0685.....	Electrical Bracket, ZP .....	1
19.....	226-0046(not shown).....	Class III Safety Cables .....	2
20.....	229-0359(not shown).....	3/8" Quicklink, ZP .....	2
21.....	290-0437(not shown).....	Receiver Cap Plug .....	2

#### **Important:**

Use only genuine factory replacement parts on your baseplate. Do **NOT** substitute homemade or non-typical parts. If a bolt is lost or in need of replacement, for your safety and the preservation of your baseplate, be sure to use a replacement bolt of the same grade (In most cases it will be Grade 5, please reference the parts list above). Replacement parts may be ordered through your nearest Blue Ox® Dealer or Distributor. Failing to follow and/or altering these installation instructions in either installation or required equipment will void the manufacturer's warranty. Towing behind a non-motorized vehicle will void the warranty.

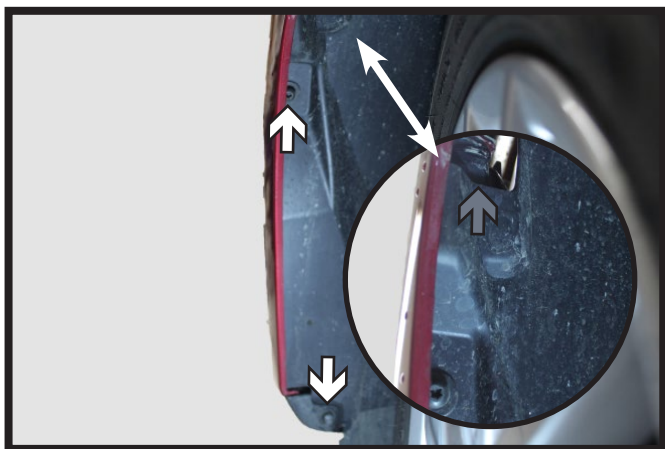
BX2639  
2013-18 Ford C-Max (Includes Hybrid & Energi)  
Installation Instructions



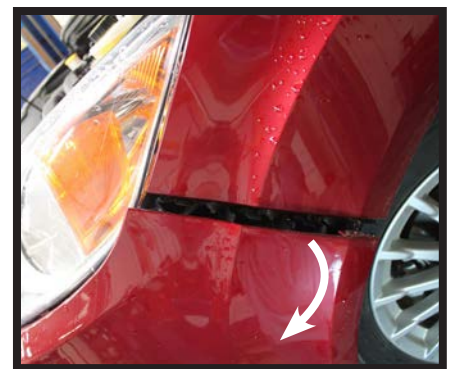
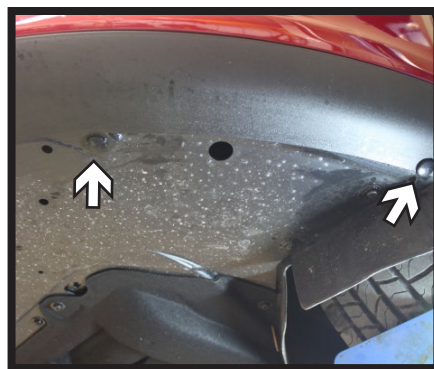
1. Remove the two (2) push pins from the top back edge of the fascia. Do this on both sides of vehicle.



2. Using a T27 Torx, remove the inner screw behind the headlight from the fascia. Do this on both sides of the vehicle.



3. Using a T27 Torx, remove the two (2) screws from the outer edge of the wheel well (white). Above the screws where the fascia meets the fender remove the push pin (gray). Do this on both sides of the vehicle.



4. On the underside of the fascia, remove the two (2) push pins from the center (left). Then remove the four (4) remaining push pins, two (2) on either side of the center push pins (middle). Pull the corners of the fascia out and forward to unclip and remove from the vehicle (right).

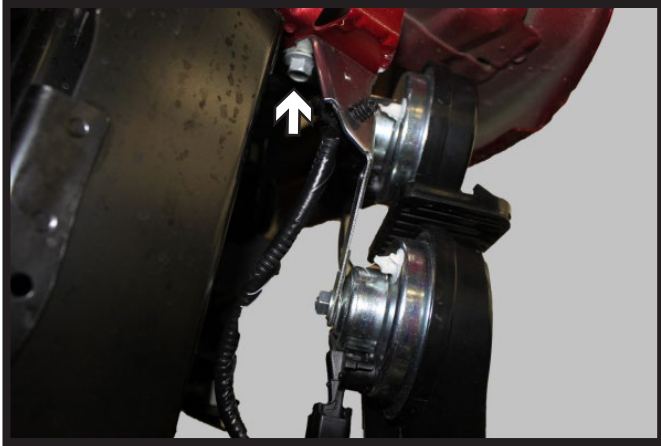
BX2639  
2013-18 Ford C-Max (Includes Hybrid & Energi)  
Installation Instructions



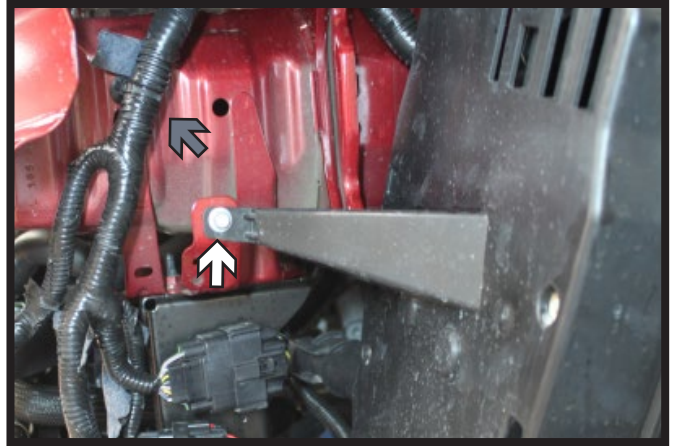
5. On the passenger side, using a 10MM socket, remove the two (2) screws from the washer fluid reservoir. Disconnect lines and set reservoir aside.



5. **Energi Only:** On the passenger side, using a 10MM socket, remove the screw from the bracket for baseplate installation clearance.



6. Using a 10MM socket, remove the screw from the backside of the horn bracket and set the horn assembly aside.

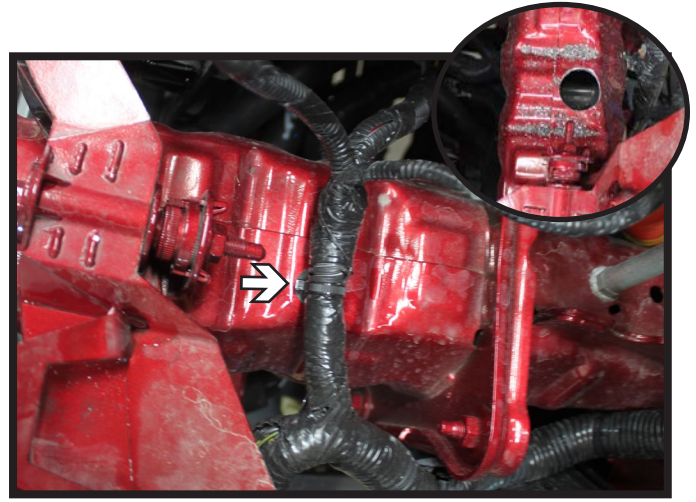


7. On the driver side of vehicle, using an 8MM socket, remove the screw from the air box. Then bend the metal tab away from the vehicle for baseplate clearance (white). Also remove the wire loom from the frame and push aside (gray).

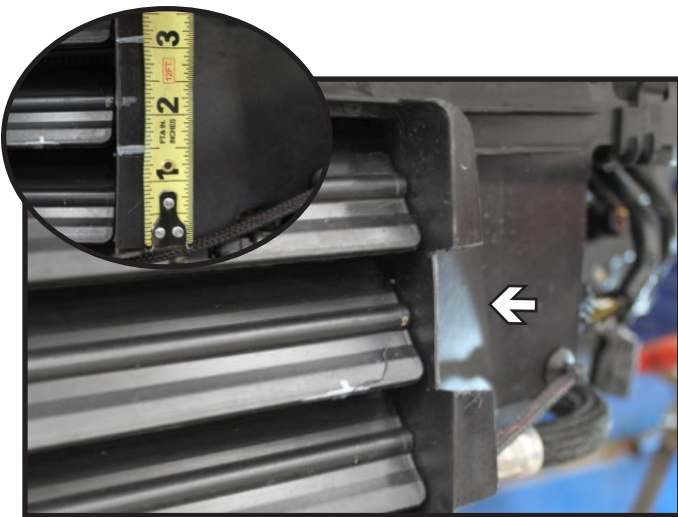
BX2639  
2013-18 Ford C-Max (Includes Hybrid & Energi)  
Installation Instructions



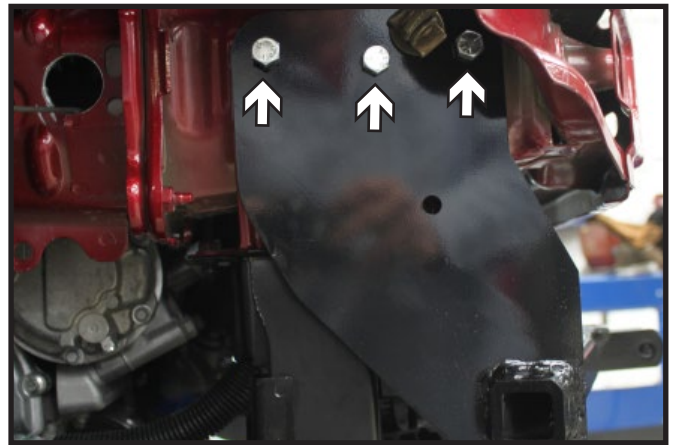
8. Using a T27 Torx, remove the two (2) screws from the front and back of the headlight. Lift up on the rear of headlight to release and unhook the wiring. Set the headlight aside. Do this on both sides of the vehicle.



9. Behind the headlights, unclip the wiring loom to expose the existing hole. Using a 1-1/4" hole saw, drill the existing hole for access to install the baseplate nut plate. Do this on both sides of the vehicle.



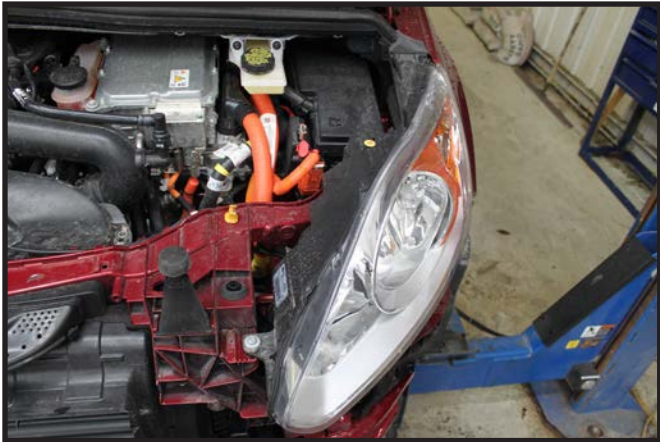
10. Hold up the baseplate to the vehicle and mark the shutter for cutting. The dimensions should be roughly 1-1/2" from the bottom and 3-1/4" to top of the cut. Trim both ends of the shutter to clear the baseplate.



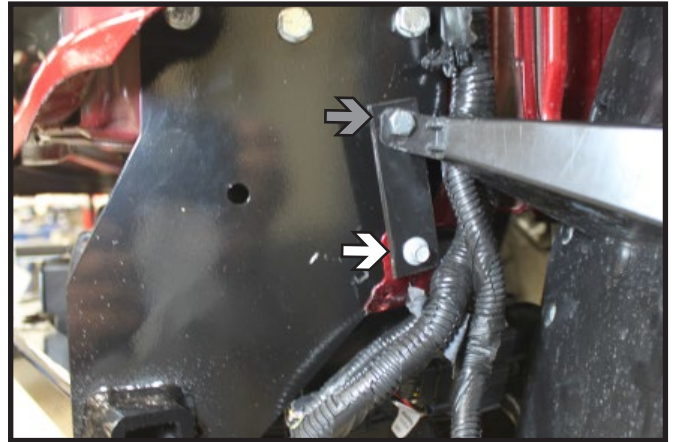
11. Using the existing holes in the frame, bolt the baseplate to the vehicle with the 3/8"-16 x 1-1/2" bolts and 3/8" nut plates. Ream out the holes if necessary for bolt clearance. Do this on both sides of the vehicle. Make sure baseplate is level before tightening down fasteners.

\*\* Use Loctite® Red on all bolt threads and tighten all bolts to the appropriate torque.

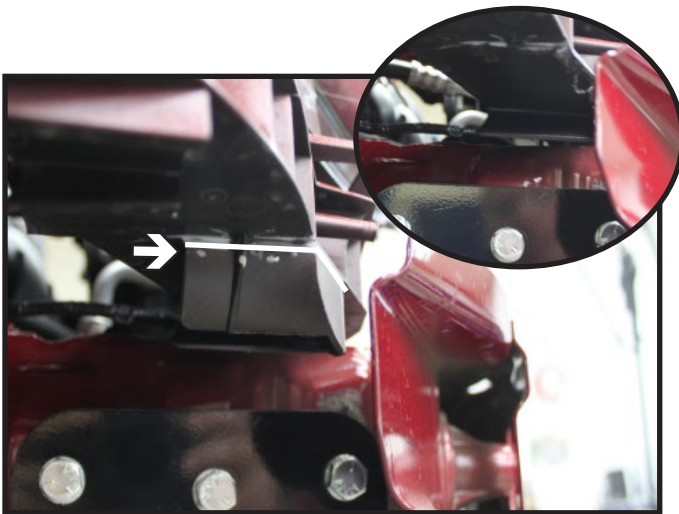
BX2639  
2013-18 Ford C-Max (Includes Hybrid & Energi)  
Installation Instructions



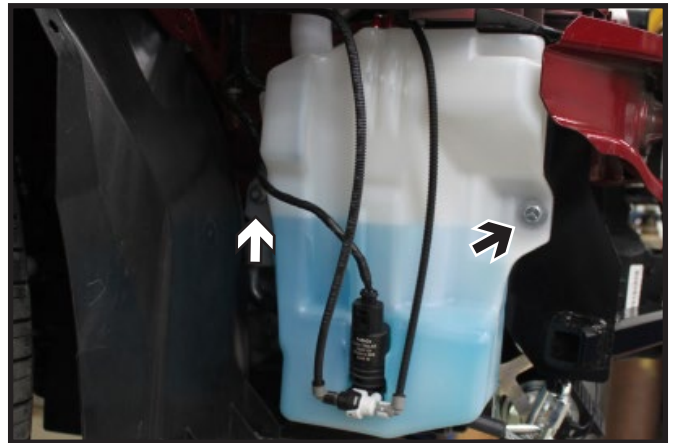
12. Plug in and reinstall the headlights on both the driver and passenger sides. Secure any loose wiring.



13. On the driver side, install the attachment plate to the existing tab, using the existing bolt (white). Bend the tab back to its original position, then connect the air box to the attachment plate with a 1/4"-20 x 3/4" bolt and 1/4" nylon nut (gray). Secure any loose wiring.

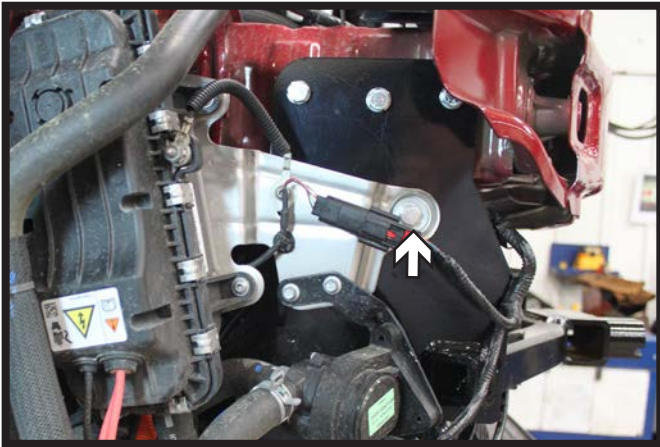


14. On the passenger side, trim the plastic flange above the baseplate for clearance of the washer fluid reservoir.

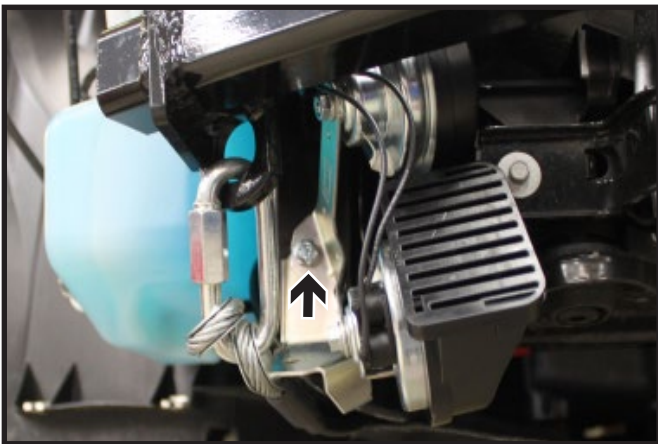


15. On the passenger side, reinstall the washer fluid reservoir. Reuse one (1) of the existing screws on left side (white). Then a 3/8"-16 x 1" bolt, 3/8" flat washer and 3/8" lock nut on the right side (black).

BX2639  
2013-18 Ford C-Max (Includes Hybrid & Energi)  
Installation Instructions

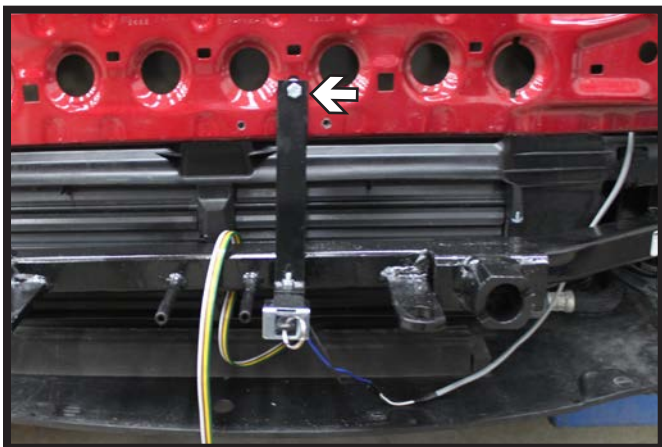


16. **Energi Only:** On the passenger side, reinstall the bracket bolt thru the existing hole in the baseplate.



17. On the passenger side, reinstall the horn to the vehicle. Use one of the existing holes on the frame below the baseplate with a 1/4"-20 x 3/4" bolt and 1/4" nylon nut. Bend the bracket if needed to insure that the horn drains if exposed to water.

Attach the permanent baseplate safety cables to the provided convenience link on the baseplate. The photo shows the recommended installation of the cables to frame of vehicle. Additional options may interfere with suggested mounting; in this case, secure the cables to a solid piece of the frame as described in the General Information sheet. Be sure the safety cables do not rub against any hoses or moving parts. Do this on **BOTH** sides of the vehicle.



18. Optional: Install the breakaway bracket to the metal bumper with a #10-16 x 1" Self Drilling screw (white). Attach the breakaway to the bracket with a 1/4"-20 x 3/4" bolt and 1/4" lock nut.



BX2639  
2013-18 Ford C-Max (Includes Hybrid & Energi)  
Installation Instructions



19. Hold the fascia up to the vehicle as close to it's original position. Mark and trim the fascia as needed to clear the baseplate.



20. Reinstall the fascia to the vehicle.



# General Information

1. It is the owner's responsibility to inspect all towing equipment for cracked welds, missing or worn parts and loose bolts before each towing trip. Be sure to use Loctite® Red on all bolts and tighten to the recommended specifications.
2. It is the owner's responsibility to hook up all towing equipment per manufacturer's instructions/ recommendations.
3. Remove the attachment tabs when not in use (if applicable).

## Notice To Baseplate Installer

### 1. It is YOUR responsibility to watch for:

- Oil cooler and air conditioner lines
- Electrical wires and hoses
- Missing parts or attaching points on the frame

\*\* If the baseplate is improperly installed and is against a wire or hose, it could cause fluid leaks or electrical shorts some time after the actual baseplate installation.

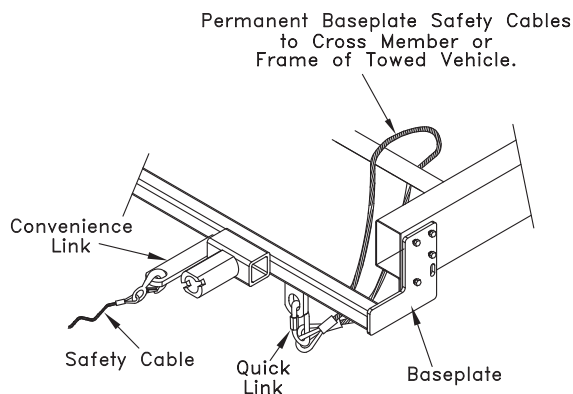
## Permanent Baseplate Safety Cable Installation

Permanent baseplate safety cables are strongly recommended when towing a vehicle with a tow bar. The principle function of the permanent baseplate safety cables is to prevent the towed vehicle from breaking loose in the event the connection between the frame of the towed vehicle and the baseplate fails or becomes disconnected. The cables must be connected from the baseplate to the frame rail or cross member of the vehicle's frame. The illustrations below show the possible arrangements recommended by Blue Ox®. Each permanent baseplate safety cable must have an adequate weight rating for the towing system. The weight rating of the two (2) cables together will not qualify.

***Do not mount the permanent baseplate safety cables against wires, hoses or brake lines.***

These permanent baseplate safety cables should remain installed as long as the baseplate is installed on the vehicle. Permanent baseplate safety cables are to be used in conjunction with, and NOT a replacement for legally required safety cables attaching the towed vehicle to the towing vehicle.

### OPTION #1



### OPTION #2

