



# BX2258

## 2012-14 Honda CR-V Installation Instructions

**Attachment Tab Height: 15-1/2"**

**Attachment Tab Width: 24"**

**Please read BOTH these Installation Instructions and the General Information sheet prior to installing or operating this equipment.**

1. Blue Ox® towing products and accessories are intended to be installed by Blue Ox® Dealers who are familiar with our products and have the equipment and knowledge necessary to do "it work".
2. Many Blue Ox® baseplates are designed to use existing holes and hardware to mount the baseplate to the towed vehicle. Even though bolts are there, do not assume they are adequate for baseplate mounting. Always use the hardware supplied in the hardware kit and existing hardware as specified in the installation instructions.

**Bolt Torque Specifications**  
Torque in Foot-Pounds for Inch Bolts

Bolt Size	Grade 5	Grade 8
1/4"	10	14
5/16"	19	29
3/8"	33	47
7/16"	54	78
1/2"	78	119
5/8"	154	230
3/4"	257	380



**Bolt Torque Specifications**  
Torque in Foot-Pounds for Metric Bolts

Bolt Size	Grade 8.8	Grade 10.9
6MM	6	8
8MM	16	22
10MM	31	40
12MM	54	70
14MM	89	117
16MM	161	230
18MM	222	318

**Reference your vehicle owner's manual for manufacturer's towing specifications.**

**! WARNING**

Failure to read and follow these instructions could result in separation of the towed vehicle from the tow bar, causing property damage, loss of towed vehicle, personal injury or death.

BX2258  
2012-14 Honda CR-V  
Installation Instructions

**Instruction Notes:** The fascia, coolant line and temperature sensor are removed and reinstalled for the baseplate installation. The bumper is removed and **not** reinstalled. Some drilling and trimming is required.

Place all components that are removed on a flat, sturdy surface. All items will be reinstalled unless otherwise noted after the baseplate is installed.

The dimensional variations between otherwise identical vehicles can be considerable. While the baseplate was designed for easy installation, it may be necessary to tailor the baseplate slightly to compensate for vehicle manufacturer's tolerances.

The BX8869 Tail Light Wiring Kit is recommended for this vehicle.



Drill a hole according to the tail  
light wiring kit instructions.

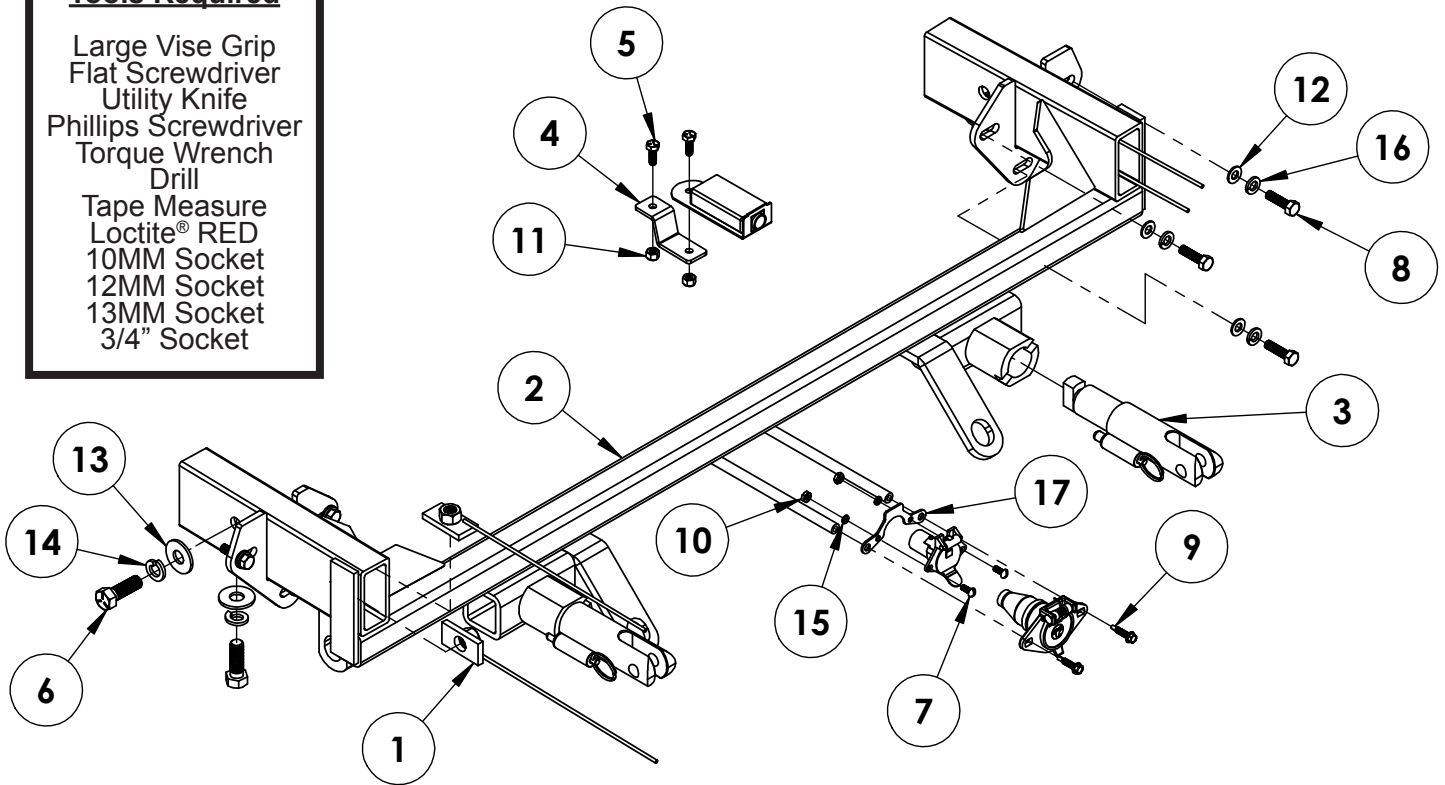
### **NOTICE**

- Handling of some cosmetic parts when installing this product may require the use of protective covers, rags, specialty tools, etc. to prevent damage.
- When using power drills be aware of the dangers of torque and drill bit length.
- When using a reciprocating saw be aware of objects behind the cutting surface.
- Use a good quality paint to spray cut edges of frame to prevent rusting.
- Be sure that **ALL** electrical connections are plugged in and accessories are functioning properly before reinstalling the fascia.
- The baseplate is computer tested to your vehicle's GVWR, exceeding this weight will void the manufacturer's warranty.
- Be sure to use a sufficient amount of Loctite® Red on all bolt threads before tightening. Tighten all bolts according to the torque chart provided.
- Dealer or installer be certain the user receives these instruction sheets.
- If the baseplate is in an accident, it must be replaced. **DO NOT** use it again! An accident can cause unseen damage and using it again could result in more damage or serious injury. **DO NOT** use the baseplate if it is damaged or missing parts.

**BX2258**  
**2012-14 Honda CR-V**  
**Installation Instructions**

**Tools Required**

Large Vise Grip  
 Flat Screwdriver  
 Utility Knife  
 Phillips Screwdriver  
 Torque Wrench  
 Drill  
 Tape Measure  
 Loctite® RED  
 10MM Socket  
 12MM Socket  
 13MM Socket  
 3/4" Socket

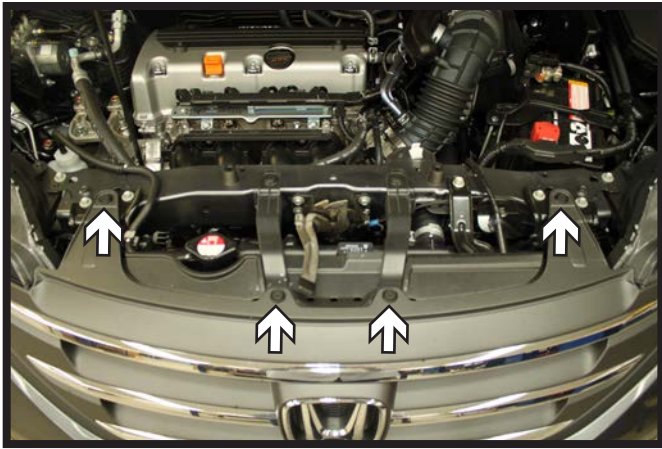


Item No.	Part No.	Description	Qty.
1.....	61-4604 .....	1/2"-13 Nut Plate with 10" Wire.....	4
2.....	61-7002 .....	BX2258 Baseplate .....	1
3.....	62-3468 .....	Attachment Tab Assembly with Hole.....	2
4.....	102-7195.....	Breakaway Bracket.....	1
5.....	201-0050 .....	1/4"-20 x 3/4" Hex Head Bolt, Grade 5, ZP.....	2
6.....	201-0051 .....	1/2"-13 x 1-1/2" Hex Head Bolt, Grade 5, ZP.....	4
7.....	201-0192 .....	#10-32 1/2" Round Slotted Head Screw .....	2
8.....	201-0446 .....	8MM-1.25 x 30MM Hex Bolt, Grade 8.8, ZP.....	6
9.....	201-0979 .....	#12-14 x 1" Self Drilling Screw, ZP .....	2
10.....	202-0047 .....	#10-32 Hex Nut.....	2
11.....	202-0102 .....	1/4"-20 Hex Nylon Nut, ZP.....	2
12.....	203-0002 .....	5/16" Flat Washer, ZP .....	6
13.....	203-0005 .....	1/2" Flat Washer, ZP .....	4
14.....	203-0012.....	1/2" Lock Washer, ZP.....	4
15.....	203-0054 .....	#10 Lock Washer .....	2
16.....	203-0102 .....	8MM Lock Washer, ZP.....	6
17.....	299-0685 .....	4-Way Bracket .....	1
18 (not shown).....	226-0046 .....	36" Class III Baseplate Safety Cable .....	2
19 (not shown).....	229-0359.....	3/8" Quicklink , ZP.....	2
20 (not shown).....	290-0159.....	13" Nylon Cable Tie .....	1
21 (not shown).....	290-0437 .....	Black Cap Plug Receiver .....	2

**Important:**

Use only genuine factory replacement parts on your baseplate. Do **NOT** substitute homemade or non-typical parts. If a bolt is lost or in need of replacement, for your safety and the preservation of your baseplate, be sure to use a replacement bolt of the same grade (In most cases it will be Grade 5, please reference the parts list above). Replacement parts may be ordered through your nearest Blue Ox® Dealer or Distributor. Failing to follow and/or altering these installation instructions in either installation or required equipment will void the manufacturer's warranty. Towing behind a non-motorized vehicle will void the warranty.

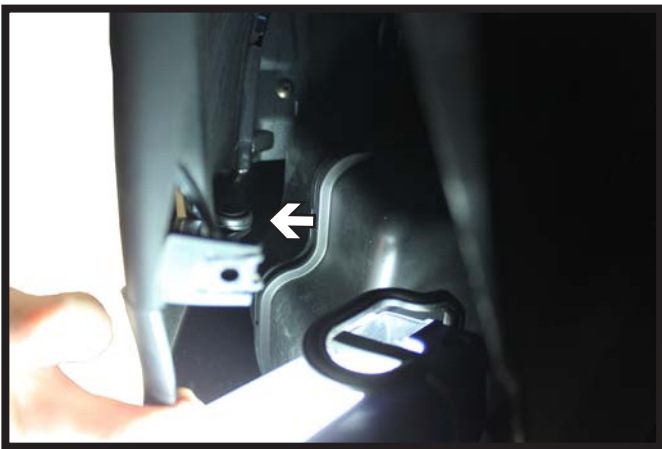
BX2258  
2012-14 Honda CR-V  
Installation Instructions



1. Remove the four (4) push pins from the top edge of the fascia.



2. Using a Phillips screwdriver remove the screw at the bottom of the wheel well (white). Then remove the two (2) push pins located above the screw (gray). Do this on both sides of the vehicle.



3. Behind the wheel well liner, remove the push pin that is located along the lower outside edge. Do this on both sides of the vehicle.



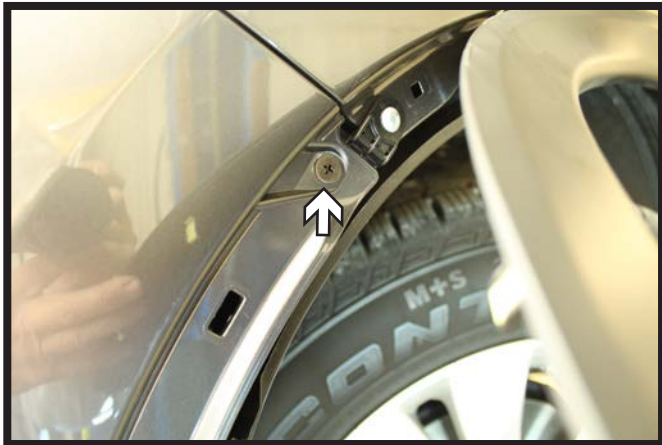
4. Remove the one (1) screw (white) and one (1) push pin (gray) that are on the under side of the fascia, right ahead of the front tire. Do this on both sides of the vehicle



5. Remove the four (4) push pins that are located under the fascia.



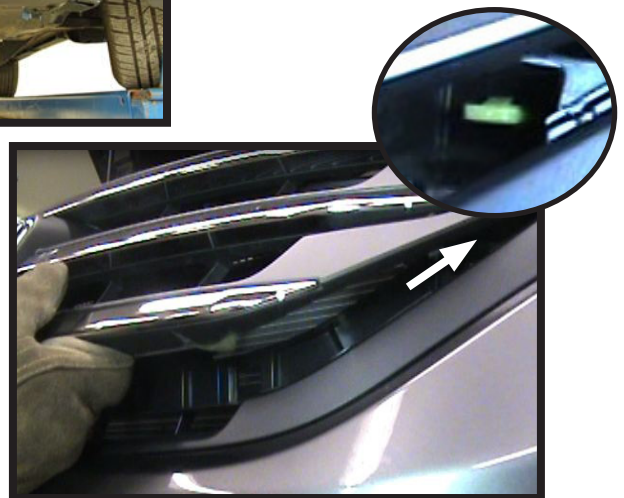
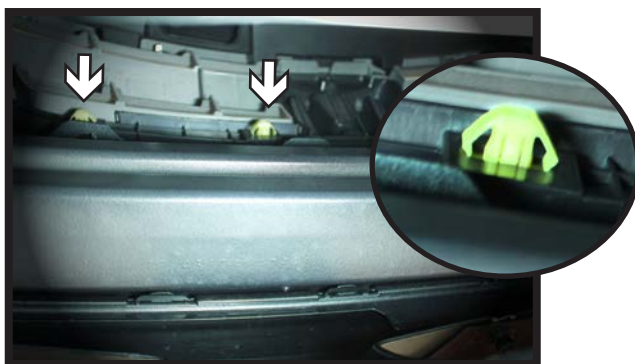
BX2258  
2012-14 Honda CR-V  
Installation Instructions



6. Carefully pry the wheel well trim back. With a Phillips screwdriver remove the one (1) screw that is located towards the top portion of the wheel well. Do this on both sides of the vehicle.



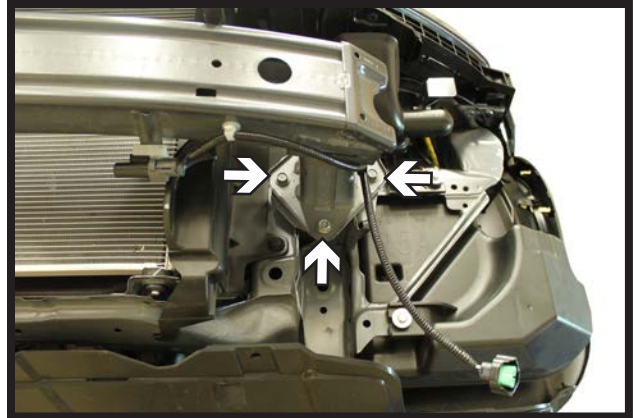
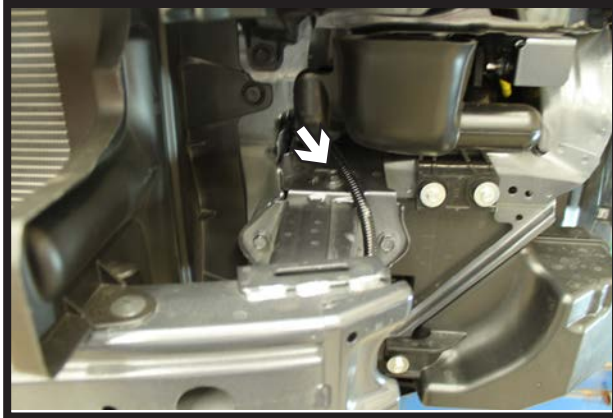
7. Pull the corners of the fascia out away from the vehicle.



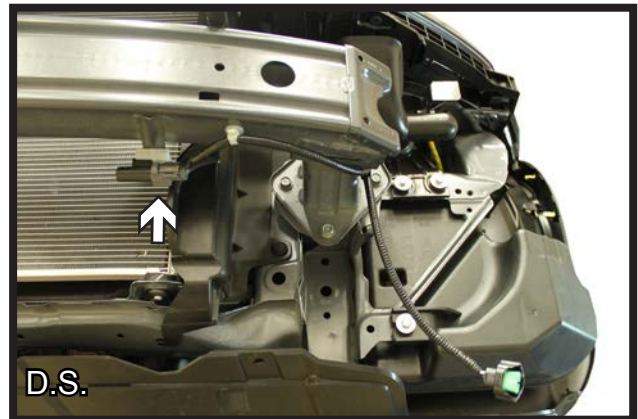
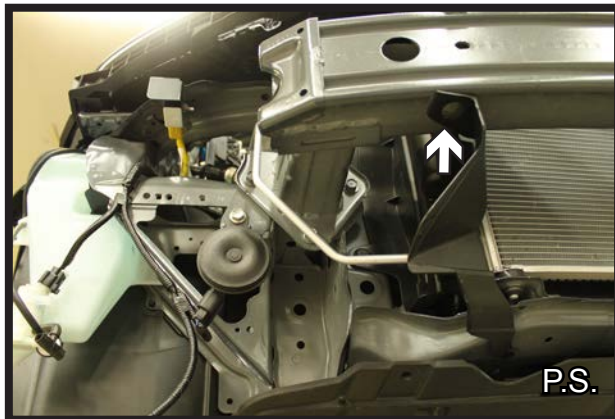
8. Looking from underneath the vehicle and toward the bumper, visually locate the four (4) yellow clips, two (2) on either side of the vehicle. From the front of the vehicle reach up into the openings and unhook these four (4) clips by releasing the top, bottom and sides of each clip, while maintaining slight outward pressure on top of the fascia.

After the clips are released, reach up thru the grill opening and pull out the grill slightly to release the clips behind. To do this, push down on the clip while pulling out on the fascia. Repeat on the other side of the vehicle. Disconnect all electrical connections and remove the fascia from the vehicle.

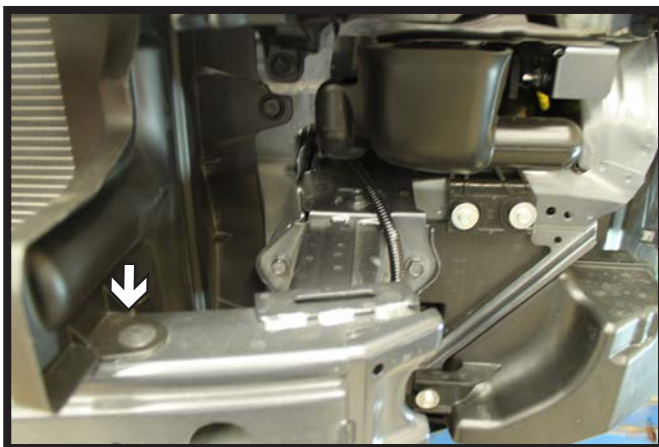
BX2258  
2012-14 Honda CR-V  
Installation Instructions



9. Using a 12MM socket, remove the four (4) bolts on the bumper core. There is one (1) on the top, one (1) on each side and one (1) on the bottom. Do this on both the sides of the vehicle.



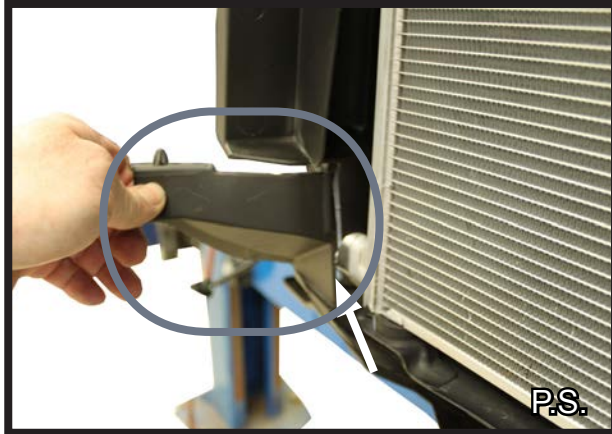
10. On the passenger side, remove the screw on the bottom, outer edge of the bumper core. On the driver side, the temperature sensor will need to be temporarily removed by releasing the push pins. It will be relocated once the baseplate installation is complete.



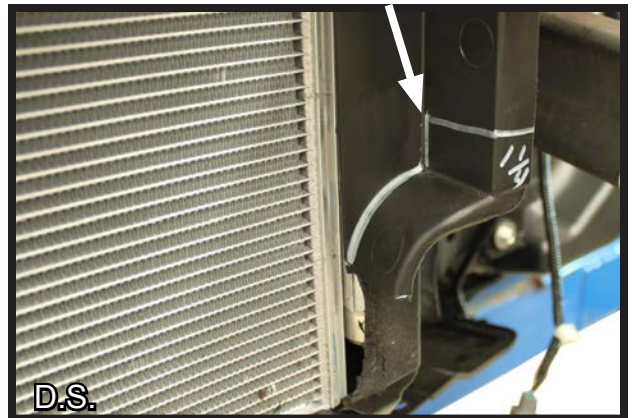
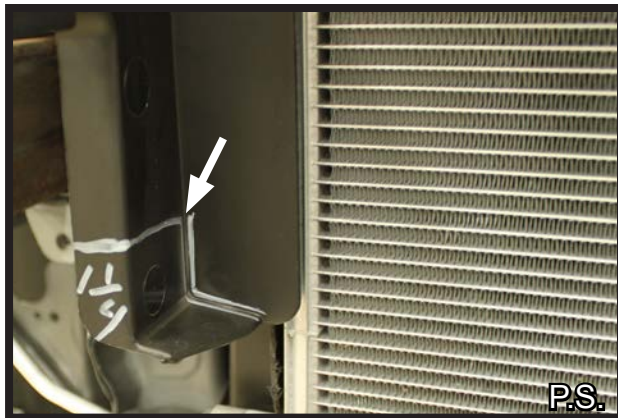
11. Using a flat screwdriver, remove the screw located on the top, outer edge of the bumper. Do this on both sides of the vehicle. The bumper will not be reinstalled.



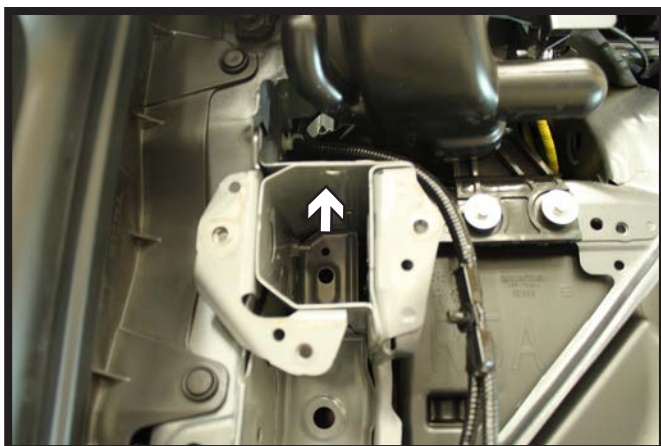
BX2258  
2012-14 Honda CR-V  
Installation Instructions



12. On the passenger side, cut straight down to remove the bottom portion. On the driver side, notch up 2-1/2" and straight out.

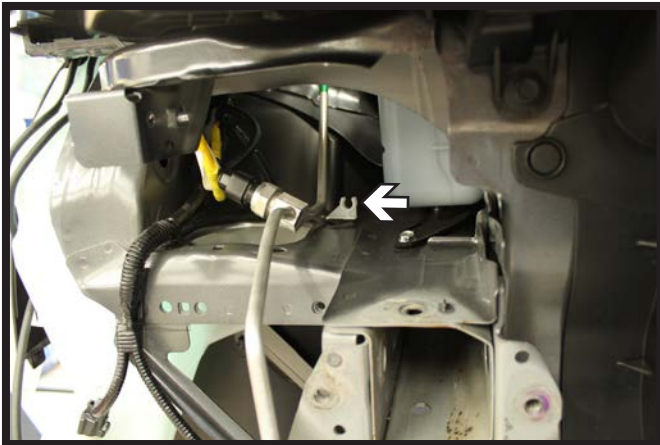


13. Additional cutting is required on the rubber mounts located next to the radiator. Mark each per image above and notch accordingly.



14. Remove the nut on the inside of the frame to allow baseplate clearance. Do this on both sides of the vehicle.

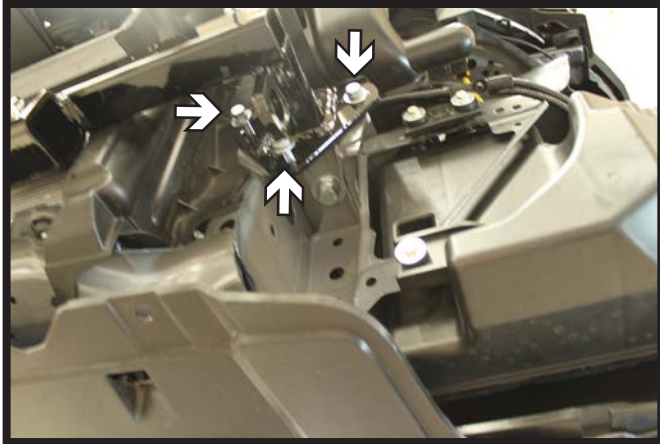
BX2258  
2012-14 Honda CR-V  
Installation Instructions



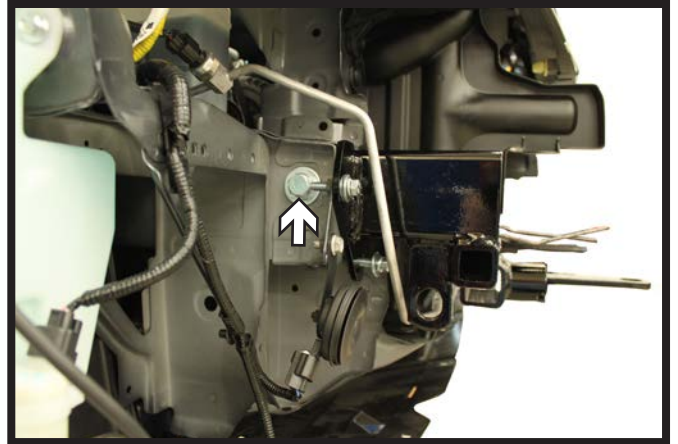
15. On the passenger side, snap the coolant line out of the bracket and carefully move over and out of the way.



16. Slide the tubes of the baseplate into the rectangular tubing of the vehicle frame.



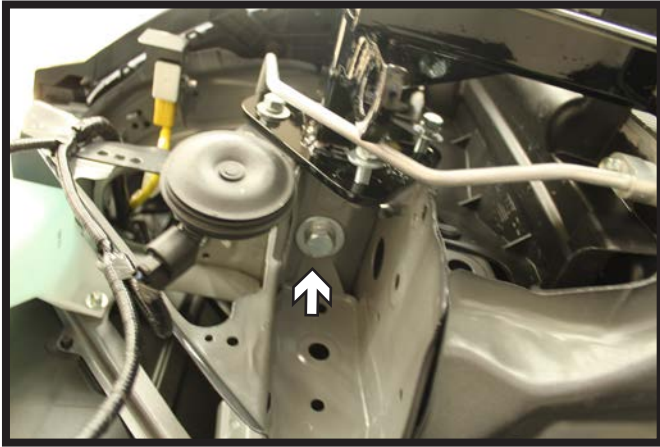
17. Align the baseplate holes with the existing bumper holes. Insert the three (3) 8MM-1.25 x 30MM bolts, 8MM lock washers and 5/16" flat washers. Finger tighten only at this time. Do this on both sides of the vehicle.



18. Insert a 1/2"-13 x 1-1/2" bolt, 1/2" lock and flat washer into the side hole. Use a 1/2"-13 nut plate on the inside of the frame. Do this on both sides of the vehicle. Level the baseplate and fully tighten hardware.

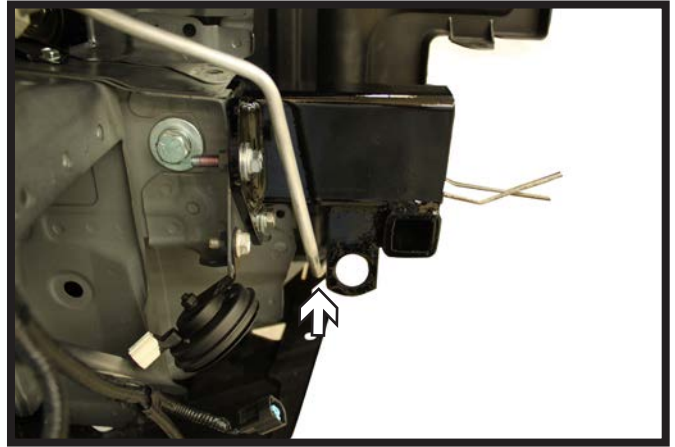


BX2258  
2012-14 Honda CR-V  
Installation Instructions

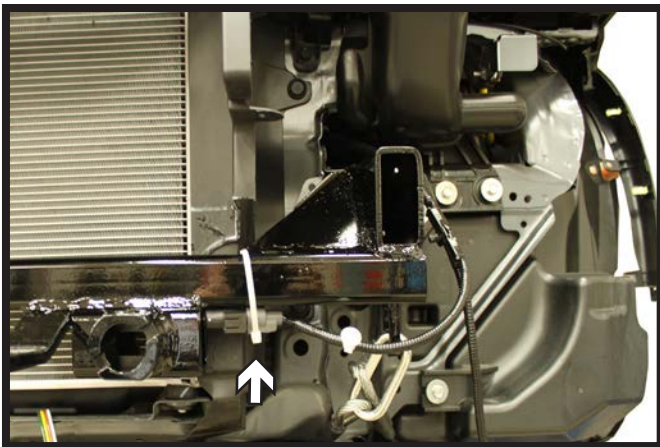


19. Insert a 1/2"-13 x 1-1/2" bolt, 1/2" lock and flat washer into the bottom hole. Use a 1/2"-13 nut plate on the inside of the frame. Do this on both sides of the vehicle. Fully tighten hardware.

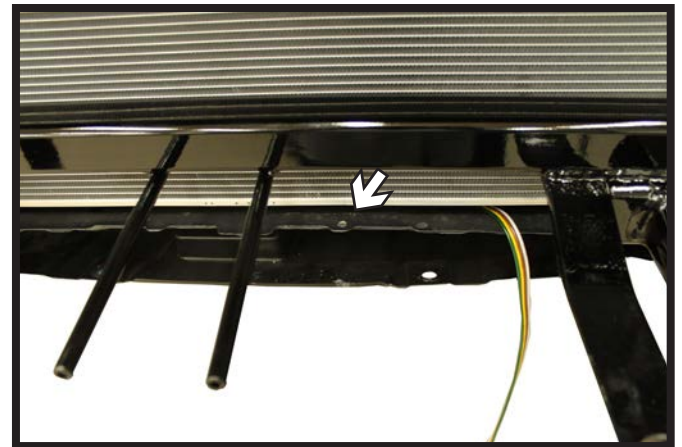
Fully tighten all the 8MM bolts on the face of the baseplate.



20. Make sure the coolant line does not interfere with the attachment tab. Then snap the coolant line back into the bracket.

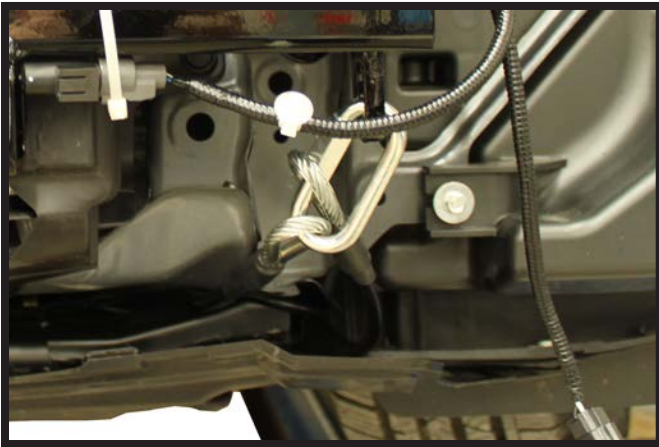


21. Using the cable tie that was provided, relocate the temperature sensor by attaching it to the baseplate.



22. To install a breakaway switch, drill a hole to the side of the electrical rods. Be sure to place a piece of metal on top of the frame rail to prevent accidentally drilling thru the radiator.

BX2258  
2012-14 Honda CR-V  
Installation Instructions



23. Attach the permanent baseplate safety cables to the provided convenience link on the baseplate. The photo shows the recommended installation of the cables to frame of vehicle. Additional options may interfere with suggested mounting; in this case, secure the cables to a solid piece of the frame as described in the instructions included with the permanent baseplate safety cables. Be sure the safety cables do not rub against any hoses or moving parts. Do this on **BOTH** sides of the vehicle.

24. Hold the fascia to the vehicle, mark and trim as needed to provide clearance for the baseplate. Reinstall the fascia making sure the baseplate convenience links and attachment tabs are situated thru the fascia before snapping the fascia back onto the vehicle.



# General Information

1. It is the owner's responsibility to inspect all towing equipment for cracked welds, missing or worn parts and loose bolts before each towing trip. Be sure to use Loctite® Red on all bolts and tighten to the recommended specifications.
2. It is the owner's responsibility to hook up all towing equipment per manufacturer's instructions/ recommendations.
3. Remove the attachment tabs when not in use (if applicable).

## Notice To Baseplate Installer

### 1. It is YOUR responsibility to watch for:

- Oil cooler and air conditioner lines
- Electrical wires and hoses
- Missing parts or attaching points on the frame

\*\* If the baseplate is improperly installed and is against a wire or hose, it could cause fluid leaks or electrical shorts some time after the actual baseplate installation.

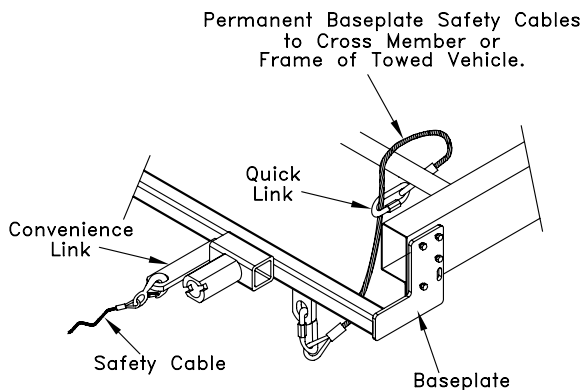
## Permanent Baseplate Safety Cable Installation

Permanent baseplate safety cables are strongly recommended when towing a vehicle with a tow bar. The principle function of the permanent baseplate safety cables is to prevent the towed vehicle from breaking loose in the event the connection between the frame of the towed vehicle and the baseplate fails or becomes disconnected. The cables must be connected from the baseplate to the frame rail or cross member of the vehicle's frame. The illustrations below show the possible arrangements recommended by Blue Ox®. Each permanent baseplate safety cable must have an adequate weight rating for the towing system. The weight rating of the two (2) cables together will not qualify.

***Do not mount the permanent baseplate safety cables against wires, hoses or brake lines.***

These permanent baseplate safety cables should remain installed as long as the baseplate is installed on the vehicle. Permanent baseplate safety cables are to be used in conjunction with, and NOT a replacement for legally required safety cables attaching the towed vehicle to the towing vehicle.

### OPTION #1



### OPTION #2

