



BX2007

2020-21 Mercedes Sprinter Van (Includes Adaptive Cruise Control & Turbo) Installation Instructions

Attachment Tab Height: 26.5"

Attachment Tab Width: 36.5"

Serial Number

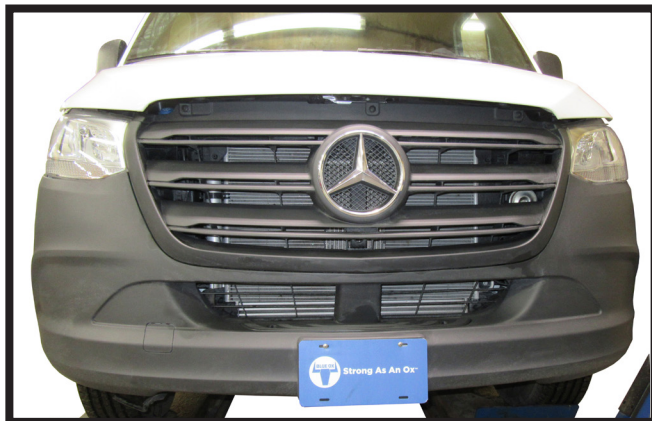
Please read BOTH these Installation Instructions and the General Information sheet prior to installing or operating this equipment.

1. Blue Ox® towing products and accessories are intended to be installed by Blue Ox® Dealers who are familiar with our products and have the equipment and knowledge necessary to do "fit work".
2. Many Blue Ox® baseplates are designed to use existing holes and hardware to mount the baseplate to the towed vehicle. Even though bolts are there, do not assume they are adequate for baseplate mounting. Always use the hardware supplied in the hardware kit and existing hardware as specified in the installation instructions.

Bolt Torque Specifications

Torque in Foot-Pounds for Inch Bolts

Bolt Size	Grade 5	Grade 8
1/4"	10	14
5/16"	19	29
3/8"	33	47
7/16"	54	78
1/2"	78	119
5/8"	154	230
3/4"	257	380



Reference your vehicle owner's manual for manufacturer's towing specifications.

Bolt Torque Specifications

Torque in Foot-Pounds for Metric Bolts

Bolt Size	Grade 8.8	Grade 10.9
6MM	6	8
8MM	16	22
10MM	31	40
12MM	54	70
14MM	89	117
16MM	161	230
18MM	222	318



WARNING

Failure to read and follow these instructions could result in separation of the towed vehicle from the tow bar, causing property damage, loss of towed vehicle, personal injury or death.

BX2007

2020-21 Mercedes Sprinter Van (Includes Adaptive Cruise Control & Turbo) Installation Instructions

Instruction Notes: The grille, fascia, ACC bracket, and bumper are removed and reinstalled for the baseplate installation. Some drilling and trimming is required.

Place all components that are removed on a flat, sturdy surface. All items will be reinstalled unless otherwise noted after the baseplate is installed.

The dimensional variations between otherwise identical vehicles can be considerable. While the baseplate was designed for easy installation, it may be necessary to tailor the baseplate slightly to compensate for vehicle manufacturer's tolerances.

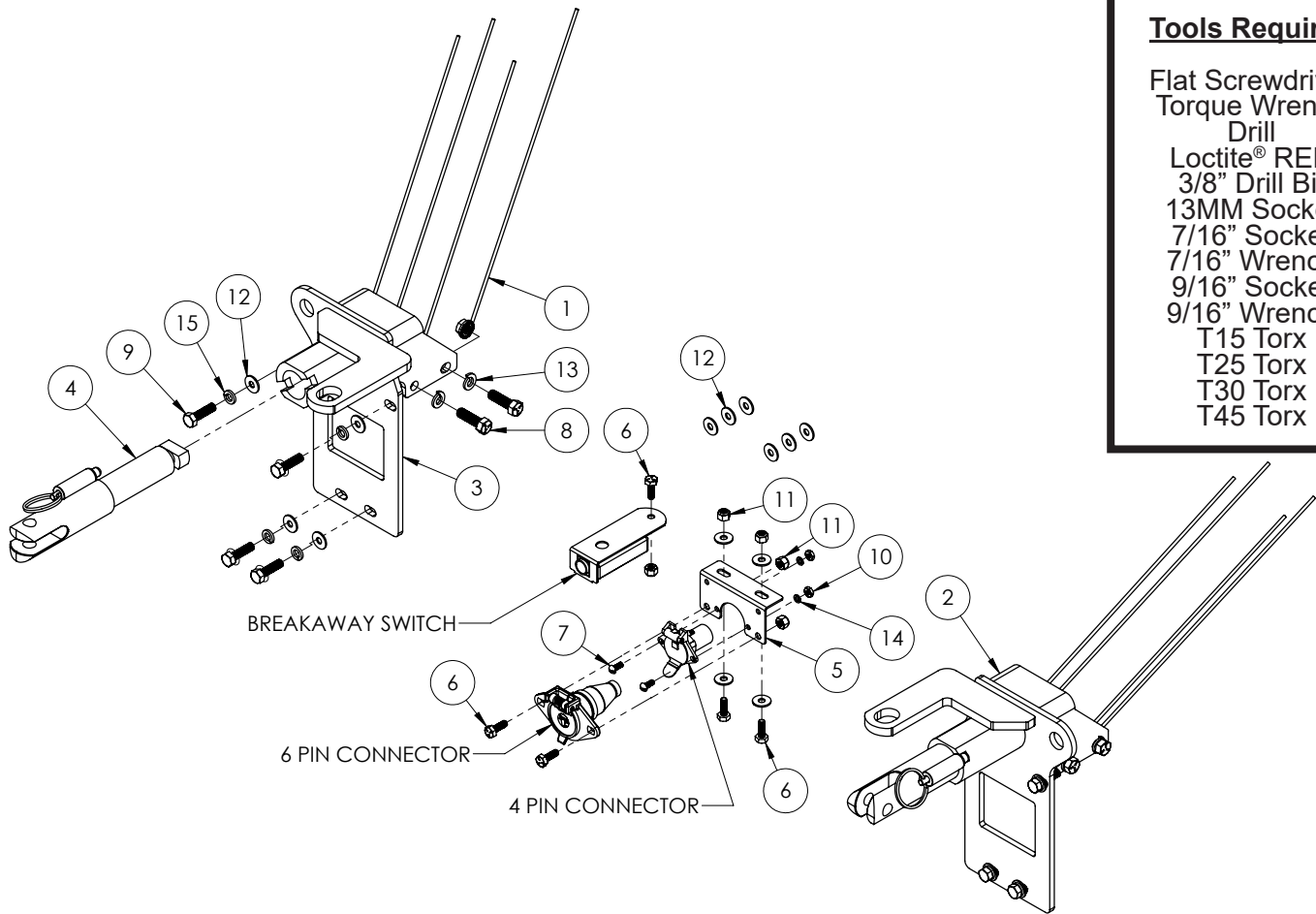
The BX8848 Tail Light Wiring Kit is recommended for this vehicle.

NOTICE

- Handling of some cosmetic parts when installing this product may require the use of protective covers, rags, specialty tools, etc. to prevent damage.
- When using power drills be aware of the dangers of torque and drill bit length.
- When using a reciprocating saw be aware of objects behind the cutting surface.
- Use a good quality paint to spray cut edges of frame to prevent rusting.
- Be sure that **ALL** electrical connections are plugged in and accessories are functioning properly before reinstalling the fascia.
- The baseplate is computer tested to your vehicle's GVWR, exceeding this weight will void the manufacturer's warranty.
- Be sure to use a sufficient amount of Loctite® Red on all bolt threads before tightening. Tighten all bolts according to the torque chart provided unless specified.
- Dealer or installer be certain the user receives these instruction sheets.
- If the baseplate is in an accident, it must be replaced. **DO NOT** use it again! An accident can cause unseen damage and using it again could result in more damage or serious injury. **DO NOT** use the baseplate if it is damaged or missing parts.

BX2007

2020-21 Mercedes Sprinter Van (Includes Adaptive Cruise Control & Turbo) Installation Instructions



- Tools Required**

 - Flat Screwdriver
 - Torque Wrench
 - Drill
 - Loctite® RED
 - 3/8" Drill Bit
 - 13MM Socket
 - 7/16" Socket
 - 7/16" Wrench
 - 9/16" Socket
 - 9/16" Wrench
 - T15 Torx
 - T25 Torx
 - T30 Torx
 - T45 Torx

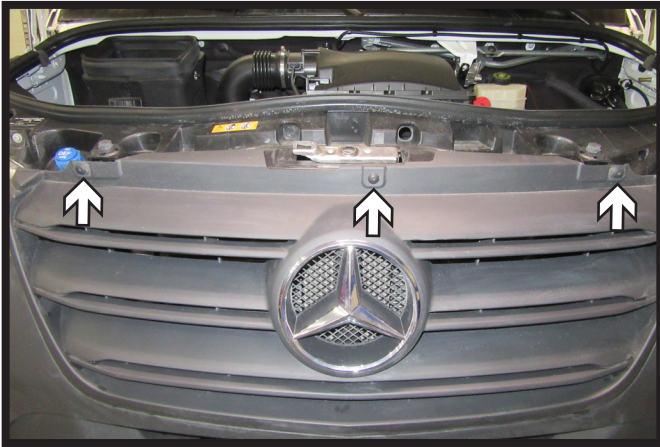
Item No.	Part No.	Description	Qty.
1.....	61-4978	3/8"-16 Whiz Nut w/ 14" Wire	8
2.....	61-8463	BX2007 Baseplate, DS.....	1
3.....	61-8464	BX2007 Baseplate, PS.....	1
4.....	62-3469	Attachment Tab Assembly with Hole	2
5.....	101-6135.....	Electrical Bracket, 90° Bend.....	1
6.....	201-0050	1/4"-20 x 3/4" Hex Head Bolt, Grade 5, ZP	5
7.....	201-0192	#10-32 1/2" Round Slotted Head Screw.....	2
8.....	201-0368	3/8"-16 x 1-1/4" Hex Head Bolt, Grade 5, ZP	8
9.....	201-0446	8MM-1.25 x 30MM Hex Head Bolt, Grade 8.8, ZP	8
10.....	202-0047	#10-32 Hex Nut	2
11.....	202-0102	1/4"-20 Hex Nylon Nut, ZP	5
12.....	203-0001	1/4" Flat Washer, ZP.....	18
13.....	203-0010	3/8" Lock Washer, ZP	8
14.....	203-0054	#10 Lock Washer, ZP	2
15.....	203-0102	8MM Lock Washer, ZP	8
16.....	226-0049(not shown)	Class III Safety Cables	2
17.....	229-0512(not shown)	3/8" Quicklink, ZP	2
18.....	290-0437(not shown)	Black Cap Plug Receiver.....	2

Important:

Use only genuine factory replacement parts on your baseplate. Do **NOT** substitute homemade or non-typical parts. If a bolt is lost or in need of replacement, for your safety and the preservation of your baseplate, be sure to use a replacement bolt of the same grade (In most cases it will be Grade 5, please reference the parts list above). Replacement parts may be ordered through your nearest Blue Ox® Dealer or Distributor. Failing to follow and/or altering these installation instructions in either installation or required equipment will void the manufacturer's warranty. Towing behind a non-motorized vehicle will void the warranty.

BX2007

2020-21 Mercedes Sprinter Van (Includes Adaptive Cruise Control & Turbo) Installation Instructions



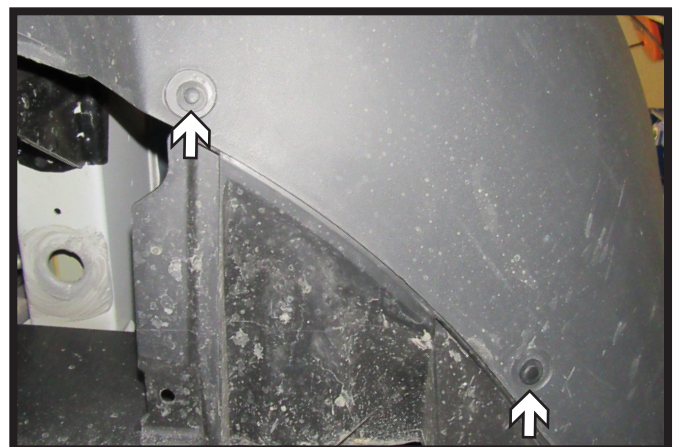
1. Using a T25 Torx, remove the three (3) bolts from the top of the fascia.



2. Remove the three (3) push pins from along the edge of the wheel well. Do this on both sides of the vehicle.



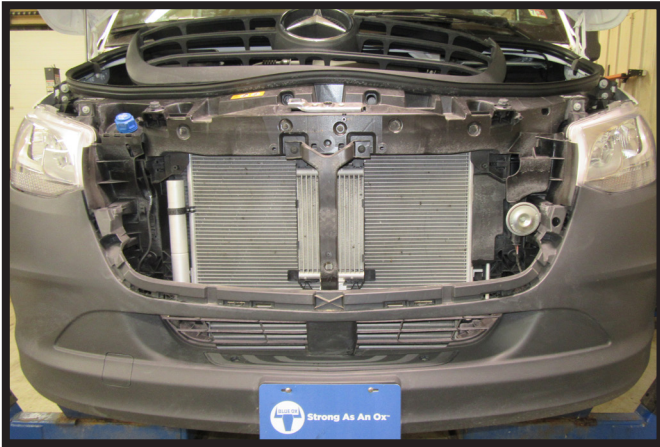
3. Using a T45 Torx, remove the two (2) bolts from the fascia, above the licence plate holder.



4. Remove the two (2) push pins on the underside of the fascia in front of the tire. Do this on both sides of the vehicle.

BX2007

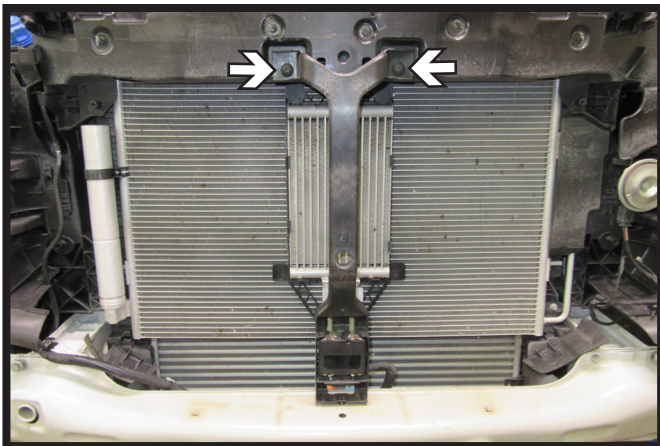
2020-21 Mercedes Sprinter Van (Includes Adaptive Cruise Control & Turbo) Installation Instructions



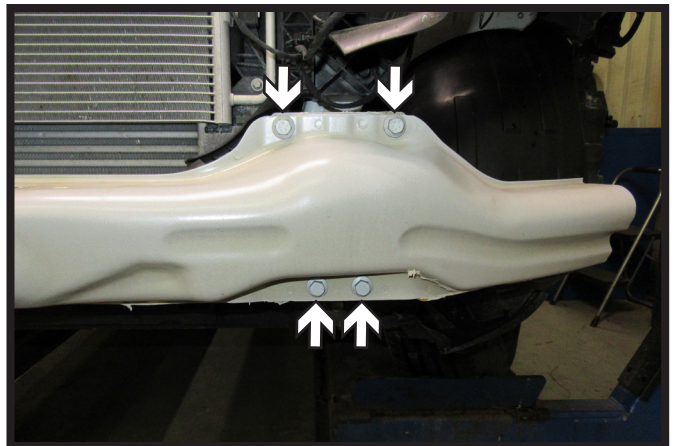
5. Unsnap and remove grille from fascia. Set grille aside to be reinstalled later.



6. Using a T30 Torx, remove the one (1) bolt next to the horn. Do this on both sides of the vehicle.



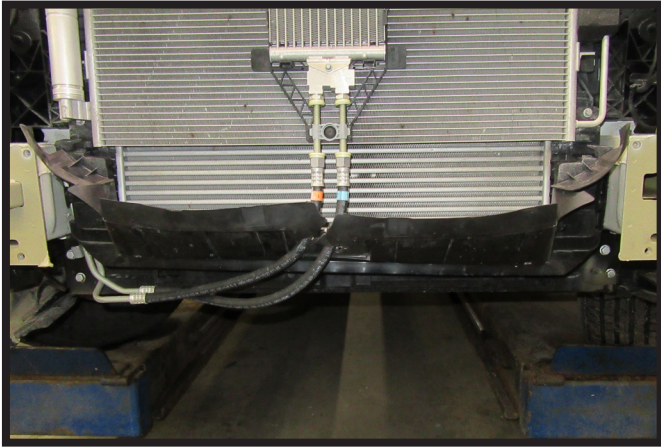
7. Using a T15 Torx, remove the two (2) bolts from the top of the Adaptive Cruise Control (ACC) bracket. Unsnap the bottom of the bracket from the bumper. Unplug electrical, remove bracket and set aside to be reinstalled later.



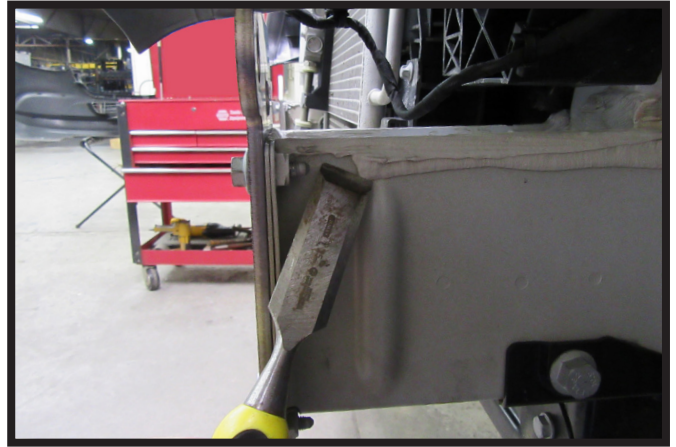
8. Using a 13MM socket, remove the four (4) bolts from each side of the bumper. Unclip the wire loom from the back of bumper as it is removed. Set bumper aside to be reinstalled later.

BX2007

2020-21 Mercedes Sprinter Van (Includes Adaptive Cruise Control & Turbo) Installation Instructions



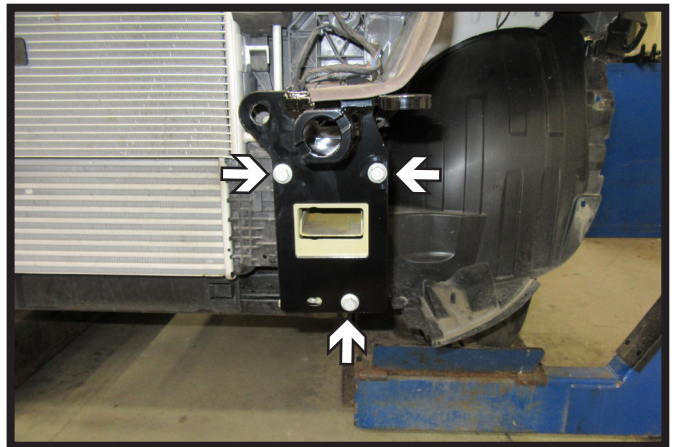
9. Unsnap and remove the plastic shroud from the bottom of the radiator.



10. Use a chisel to remove the caulk from the top of the vehicle frame to allow for a better baseplate fit.



11. Tip baseplate upward and slide onto the frame of the baseplate.



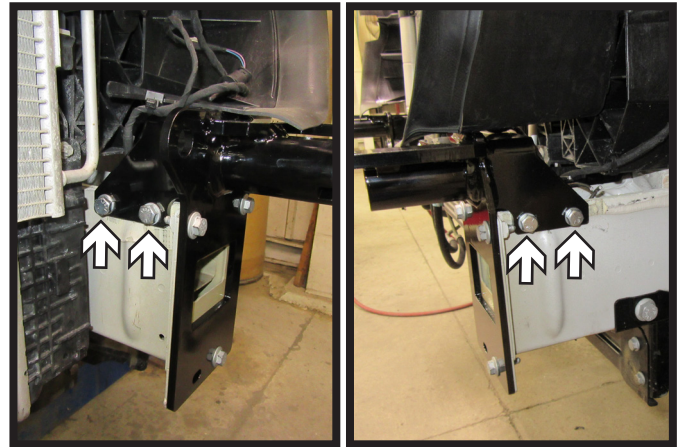
12. Line the inner edge of the baseplate with the inner frame edge. Start the front three (3) 8MM bolts. Tighten but do not apply Loctite Red at this time.

2020-21 Mercedes Sprinter Van (Includes Adaptive Cruise Control & Turbo)
Installation Instructions



13. Using a 3/8" drill bit and the baseplate as a template, drill two (2) holes on each side of the baseplate. Do this on both sides of the vehicle.

Note: The back inner hole on both sides of the vehicle as well as the back outer hole on the passenger side of the vehicle will need to be drilled at an angle.

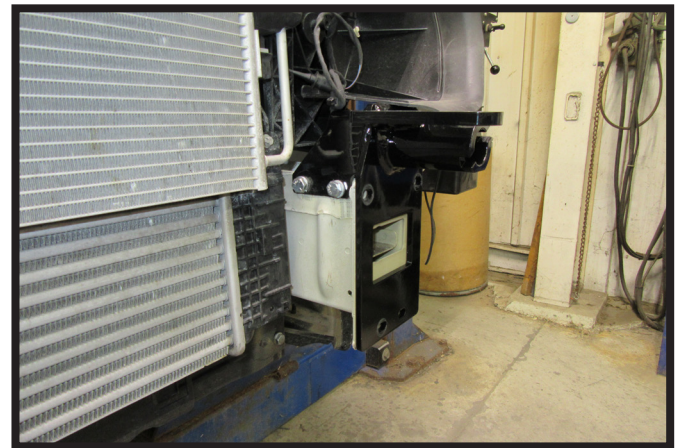


14. Install four (4) 3/8" bolts with hardware into the side holes of the baseplate. Do this on both side of the vehicle.

**** Use Loctite® Red on all bolt threads and tighten all bolts to the appropriate torque. ****



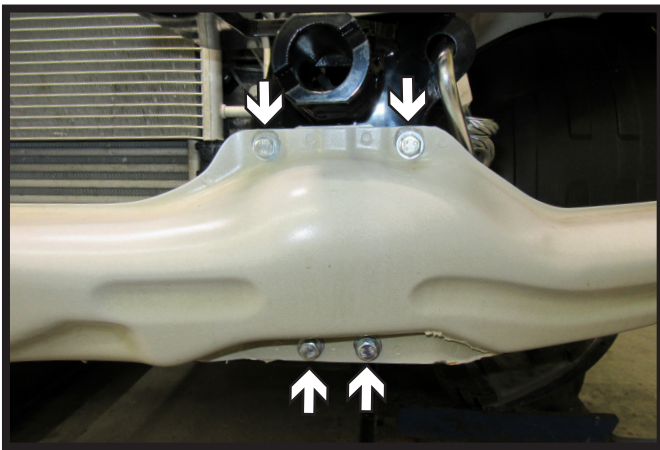
15. Attach the permanent baseplate safety cables to the provided convenience link on the baseplate. The photo above shows the recommended installation of the cables to frame of vehicle. Additional options may interfere with suggested mounting; in this case, secure the cables to a solid piece of the frame as described in the General Information sheet. Be sure the safety cables do not rub against any hoses or moving parts. Do this on **BOTH** sides of the vehicle.



16. Remove the three (3) bolts from the front of the baseplate. Do this on both sides of the vehicle.

BX2007

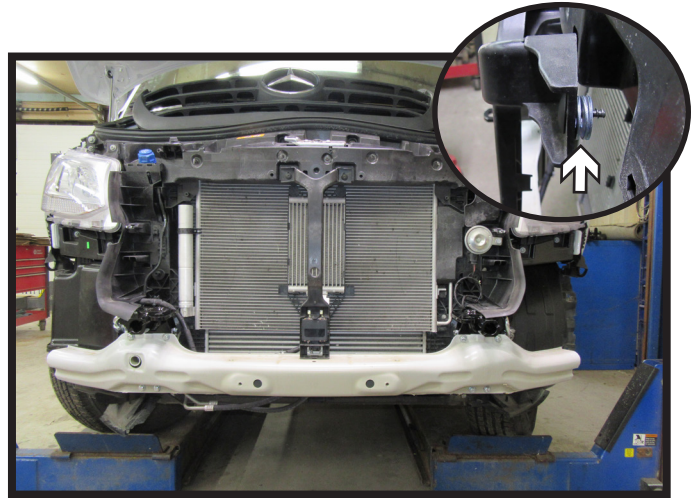
2020-21 Mercedes Sprinter Van (Includes Adaptive Cruise Control & Turbo) Installation Instructions



17. Slide bumper back into place and install four (4) 8MM bolts with lock washer and flat washer. Do this on both sides of the vehicle.

Note: Reattach electrical loom to back of bumper.

**** Use Loctite® Red on all bolt threads and tighten all bolts to the appropriate torque. ****



18. Reinstall the ACC Bracket by snapping bottom to the bumper and reinstalling existing bolts into the top two (2) holes with three (3) 1/4" washers on each bolt (inset). Reconnect electrical to ACC sensor.



19. Hold the fascia as close to its original position, mark and trim the fascia around the convenience links and attachment tabs. Reinstall the fascia and grille.

General Information

1. Ensure that your product(s) are registered online. It is crucial to register your product(s) so that you may be alerted of product offerings, updates, upgrades, maintenance and safety bulletins, and/or recalls.
2. **It is the owner's responsibility to inspect all towing equipment for cracked welds, missing or worn parts and loose bolts before each towing trip.** Be sure to use Loctite® Red on all bolts and tighten to the recommended specifications.
3. **It is the owner's responsibility to hook up all towing equipment per manufacturer's instructions/ recommendations.**
4. Remove the attachment tabs when not in use (if applicable).

Notice To Baseplate Installer

1. It is YOUR responsibility to watch for:

- Oil cooler and air conditioner lines
- Electrical wires and hoses
- Missing parts or attaching points on the frame

** If the baseplate is improperly installed and is against a wire or hose, it could cause fluid leaks or electrical shorts some time after the actual baseplate installation.

Permanent Baseplate Safety Cable Installation

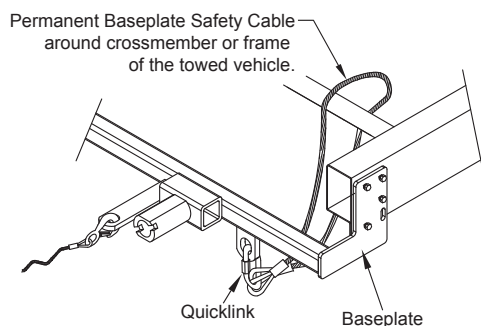
Permanent baseplate safety cables are strongly recommended when towing a vehicle with a tow bar. The principle function of the permanent baseplate safety cables is to prevent the towed vehicle from breaking loose in the event the connection between the frame of the towed vehicle and the baseplate fails or becomes disconnected. The cables must be connected from the baseplate to the frame rail or cross member of the vehicle's frame. The illustrations below show the possible arrangements recommended by Blue Ox®. Each permanent baseplate safety cable must have an adequate weight rating for the towing system. The weight rating of the two (2) cables together will not qualify.

Do not mount the permanent baseplate safety cables against wires, hoses or brake lines.

These permanent baseplate safety cables should remain installed as long as the baseplate is installed on the vehicle. Permanent baseplate safety cables are to be used in conjunction with, and NOT a replacement for legally required safety cables attaching the towed vehicle to the towing vehicle.

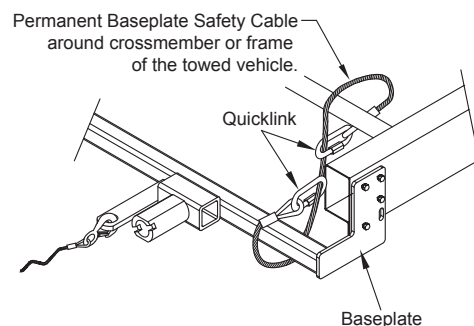
Option #1

(Baseplates with Convenience Link Tabs)



Option #2

(Baseplates with out Convenience Link Tabs)



Discover other trailer hitches and towing on our website.