



BX1826 Installation Instructions 1996-04 Nissan Pathfinder Removable

The front bumper fascia and metal bumper are removed for baseplate installation. Holes need to be drilled and the bumper fascia needs to be trimmed. DEALER OR INSTALLER: BE CERTAIN THE USER RECEIVES THE INSTRUCTION SHEET.



Figure 1

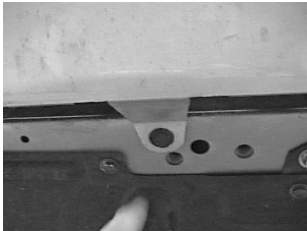


Figure 2



Figure 3



Figure 4

1. Open the hood and remove the center grill by depressing the clips with a needle nose pliers. Figure 1. Remove the push pins that are on top of the bumper fascia once the center grill is off.

2. Remove the push pins and screws from the bottom of the bumper fascia. Figures 2 and 3. Also remove the push pins from the center grill section.

3. Pull the wheel well molding out from in front of the tire and remove the Hex bolt fastening the fender to the fascia. Figure 4. Remove the fascia from the vehicle and set aside.

4. Remove metric bolts from the left and right tie down bracket from each side of the vehicle. Figure 5.

5. Bolt the driver's and passenger's frame brackets over the top of tie down brackets on the vehicle. Use the bolts as shown in the drawing on page 2. Figure 6. **Note: Be sure and use loctite on each bolt before tightening. Tighten all bolts according to chart in the General Instruction Sheet.**

6. Bolt the baseplate to the frame brackets. Figure 7. Use the bolts as shown in the drawing on page 2.

7. Replace bumper fascia and any electrical wiring disconnected during the installation.

8. Install the tow bar and safety cables according to the instructions included in their packages. Do not substitute other devices if the tow bar pin and clip are lost.

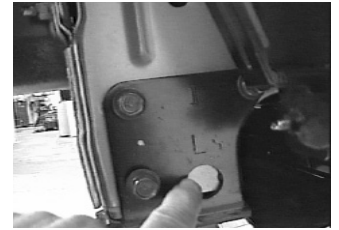


Figure 5

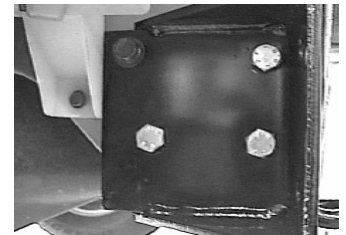


Figure 6



Figure 7

Tools Required

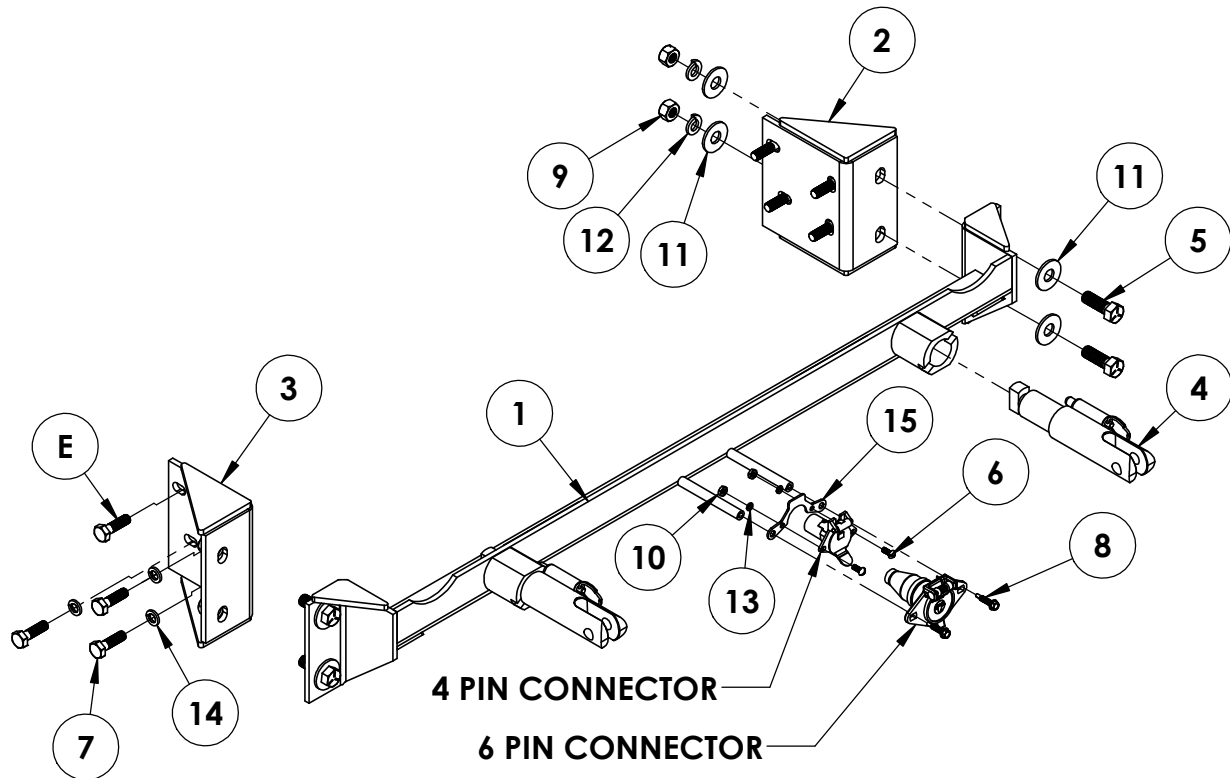
10MM Wrench
3/4" Wrench

Loctite Blue
Phillips Screw Driver

7/16" Wrench

Parts List

Ref. No.	Qty.	Part No.	Description
1	1	61-5467	Weldment, Base Plate, BX1826
2	1	61-5499	Driver Side Frame Bracket, BX1826
3	1	61-5500	Passenger Side Frame Bracket, BX1826
4	2	62-3468	Attachment Tab, SF/SB
5	4	201-0051	1/2-13 x 1 1/2 Hex Bolt, Grade 5
6	2	201-0192	#10-32 x 1/2 Solt, RD. Screw
7	5	201-0423	10mm-1.25 x 35mm Hex Nut, Grade 8.8
8	2	201-0979	#12-14 x 1" Self Drilling Screw, ZP
9	4	202-0005	1/2-13 Hex Nut
10	2	202-0047	#10-32 Hex Nut
11	8	203-0005	1/2 Flat Washer
12	4	203-0012	1/2 Lock Washer
13	2	203-0054	#10 Lock Washer
14	5	203-0104	10mm Lock Washer
15	1	299-0685	4-Way Bracket
E	2		Existing Bolts, Tie Down Brackets
	2	226-0046	Baseplate Safety Cable, 36" CL III (Not Shown)
	2	229-0359	Quicklink, 3/8, ZP (Not Shown)
	2	290-0437	Receiver, Cap Plug (BLK) (Not Shown)



General Information

1. It is the owner's responsibility to inspect all towing equipment for cracked welds, missing or worn parts and loose bolts before each towing trip. Be sure to use Loctite® Red on all bolts and tighten to the recommended specifications.
2. It is the owner's responsibility to hook up all towing equipment per manufacturer's instructions/ recommendations.
3. Remove the attachment tabs when not in use (if applicable).

Notice To Baseplate Installer

1. It is YOUR responsibility to watch for:

- Oil cooler and air conditioner lines
- Electrical wires and hoses
- Missing parts or attaching points on the frame

** If the baseplate is improperly installed and is against a wire or hose, it could cause fluid leaks or electrical shorts some time after the actual baseplate installation.

Permanent Baseplate Safety Cable Installation

Permanent baseplate safety cables are strongly recommended when towing a vehicle with a tow bar. The principle function of the permanent baseplate safety cables is to prevent the towed vehicle from breaking loose in the event the connection between the frame of the towed vehicle and the baseplate fails or becomes disconnected. The cables must be connected from the baseplate to the frame rail or cross member of the vehicle's frame. The illustrations below show the possible arrangements recommended by Blue Ox®. Each permanent baseplate safety cable must have an adequate weight rating for the towing system. The weight rating of the two (2) cables together will not qualify.

Do not mount the permanent baseplate safety cables against wires, hoses or brake lines.

These permanent baseplate safety cables should remain installed as long as the baseplate is installed on the vehicle. Permanent baseplate safety cables are to be used in conjunction with, and NOT a replacement for legally required safety cables attaching the towed vehicle to the towing vehicle.

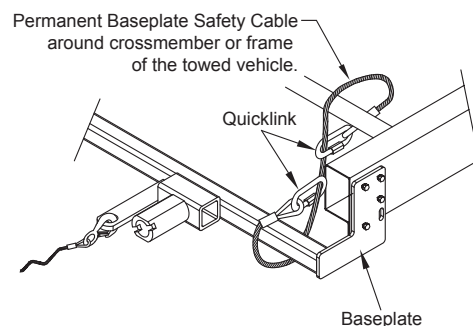
Option #1

(Baseplates with Convenience Link Tabs)



Option #2

(Baseplates with out Convenience Link Tabs)



Rely only on high-grade trailer hitches and towing on our virtual shelves.