



BX1730 2018 Chevy Equinox Installation Instructions

Attachment Tab Height: 16"

Attachment Tab Width: 23"

Please read BOTH these Installation Instructions and the General Information sheet prior to installing or operating this equipment.

1. Blue Ox® towing products and accessories are intended to be installed by Blue Ox® Dealers who are familiar with our products and have the equipment and knowledge necessary to do "it work".
2. Many Blue Ox® baseplates are designed to use existing holes and hardware to mount the baseplate to the towed vehicle. Even though bolts are there, do not assume they are adequate for baseplate mounting. Always use the hardware supplied in the hardware kit and existing hardware as specified in the installation instructions.

Bolt Torque Specifications		
Torque in Foot-Pounds for Inch Bolts		
Bolt Size	Grade 5	Grade 8
1/4"	10	14
5/16"	19	29
3/8"	33	47
7/16"	54	78
1/2"	78	119
5/8"	154	230
3/4"	257	380



Bolt Torque Specifications		
Torque in Foot-Pounds for Metric Bolts		
Bolt Size	Grade 8.8	Grade 10.9
6MM	6	8
8MM	16	22
10MM	31	40
12MM	54	70
14MM	89	117
16MM	161	230
18MM	222	318

Reference your vehicle owner's manual for manufacturer's towing specifications.

! WARNING

Failure to read and follow these instructions could result in separation of the towed vehicle from the tow bar, causing property damage, loss of towed vehicle, personal injury or death.

BX1730
2018 Chevy Equinox
Installation Instructions

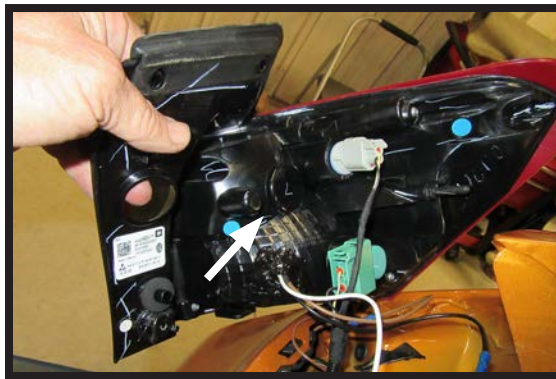
Instruction Notes: The fascia and windshield washer fluid reservoir are removed and reinstalled for the baseplate installation. Some drilling and trimming is required.

Place all components that are removed on a flat, sturdy surface. All items will be reinstalled unless otherwise noted after the baseplate is installed.

The dimensional variations between otherwise identical vehicles can be considerable. While the baseplate was designed for easy installation, it may be necessary to tailor the baseplate slightly to compensate for vehicle manufacturer's tolerances.

The BX8869 Tail Light Wiring Kit is recommended for this vehicle.

The BX8848 Tail Light Wiring Kit is recommended for vehicle with LED taillights.



Drill a hole according to the tail
light wiring kit instructions.

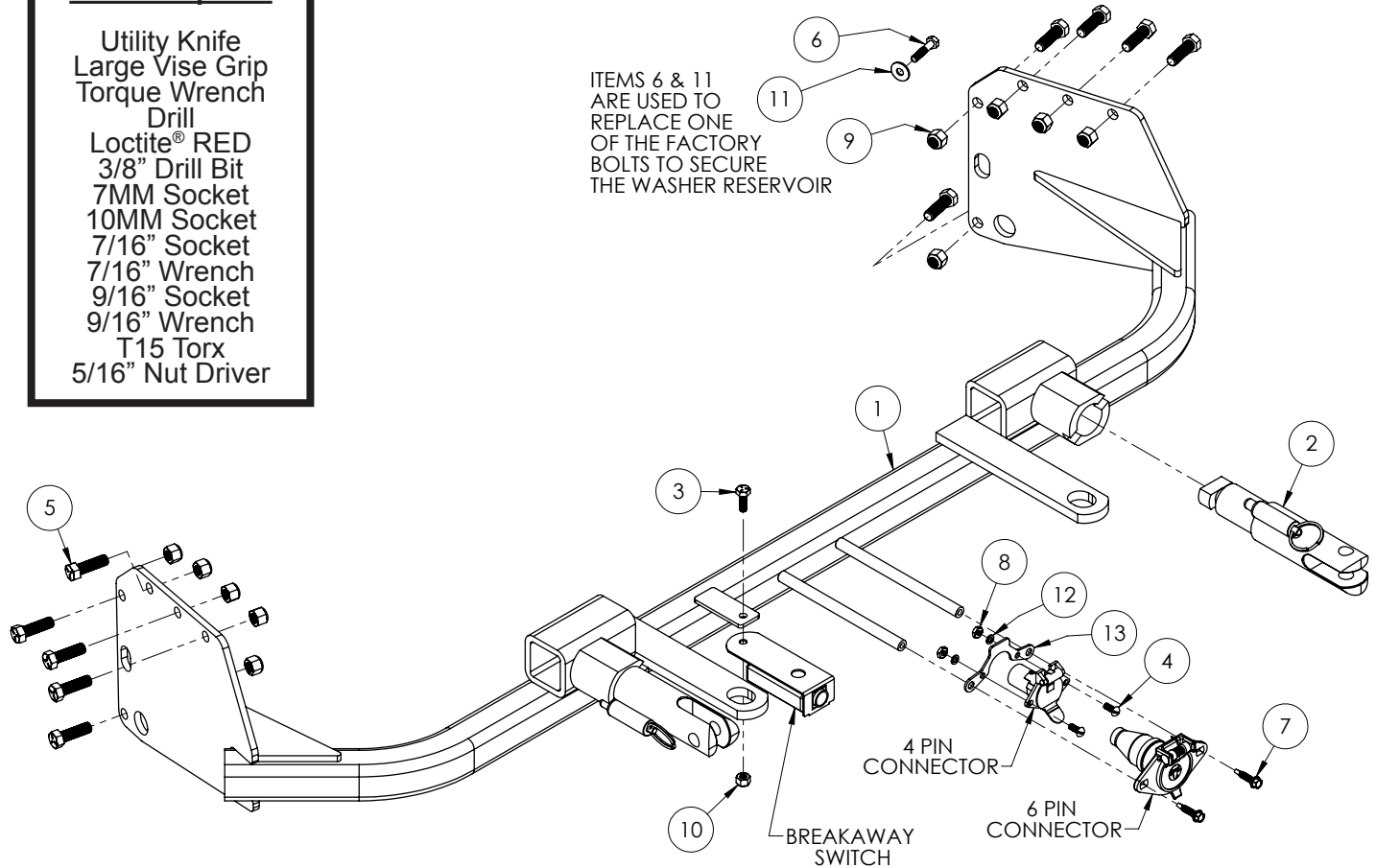
NOTICE

- Handling of some cosmetic parts when installing this product may require the use of protective covers, rags, specialty tools, etc. to prevent damage.
- When using power drills be aware of the dangers of torque and drill bit length.
- When using a reciprocating saw be aware of objects behind the cutting surface.
- Use a good quality paint to spray cut edges of frame to prevent rusting.
- Be sure that **ALL** electrical connections are plugged in and accessories are functioning properly before reinstalling the fascia.
- The baseplate is computer tested to your vehicle's GVWR, exceeding this weight will void the manufacturer's warranty.
- Be sure to use a sufficient amount of Loctite® Red on all bolt threads before tightening. Tighten all bolts according to the torque chart provided unless specified.
- Dealer or installer be certain the user receives these instruction sheets.
- If the baseplate is in an accident, it must be replaced. **DO NOT** use it again! An accident can cause unseen damage and using it again could result in more damage or serious injury. **DO NOT** use the baseplate if it is damaged or missing parts.

BX1730 2018 Chevy Equinox Installation Instructions

Tools Required

Utility Knife
Large Vise Grip
Torque Wrench
Drill
Loctite® RED
3/8" Drill Bit
7MM Socket
10MM Socket
7/16" Socket
7/16" Wrench
9/16" Socket
9/16" Wrench
T15 Torx
5/16" Nut Driver

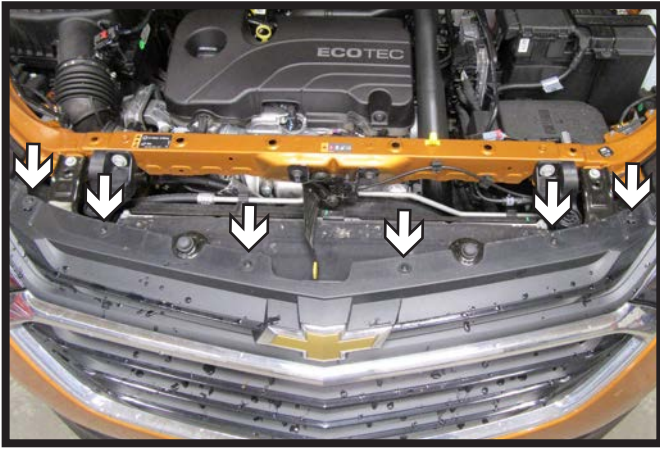


Item No.	Part No.	Description	Qty.
1	61-7896	BX1730 Baseplate	1
2	62-3468	Attachment Tab Assembly with Hole	2
3	201-0050	1/4"-20 x 3/4" Hex Head Bolt, Grade 5, ZP	1
4	201-0192	#10-32 1/2" Round Slotted Head Screw	2
5	201-0368	3/8"-16 x 1-1/4" Hex Head Bolt, Grade 5, ZP	10
6	201-0655	6MM-1.0 x 30MM Hex Bolt, Grade 8.8, ZP	1
7	201-0979	#12-14 x 1" Self Drilling Screw, ZP	2
8	202-0047	#10-32 Hex Nut	2
9	202-0090	3/8"-16 Hex Nylon Insert Lock Nut, ZP	10
10	202-0102	1/4"-20 Hex Nylon Nut, ZP	1
11	203-0001	1/4" Flat Washer, ZP	1
12	203-0054	#10 Lock Washer, ZP	2
13	299-0685	4-Way Bracket	1
14	226-0046(not shown)	Class III Safety Cables	2
15	229-0359(not shown)	3/8" Quicklink, ZP	2
16	290-0437(not shown)	Black Cap Plug Receiver	2

Important:

Use only genuine factory replacement parts on your baseplate. Do **NOT** substitute homemade or non-typical parts. If a bolt is lost or in need of replacement, for your safety and the preservation of your baseplate, be sure to use a replacement bolt of the same grade (In most cases it will be Grade 5, please reference the parts list above). Replacement parts may be ordered through your nearest Blue Ox® Dealer or Distributor. Failing to follow and/or altering these installation instructions in either installation or required equipment will void the manufacturer's warranty. Towing behind a non-motorized vehicle will void the warranty.

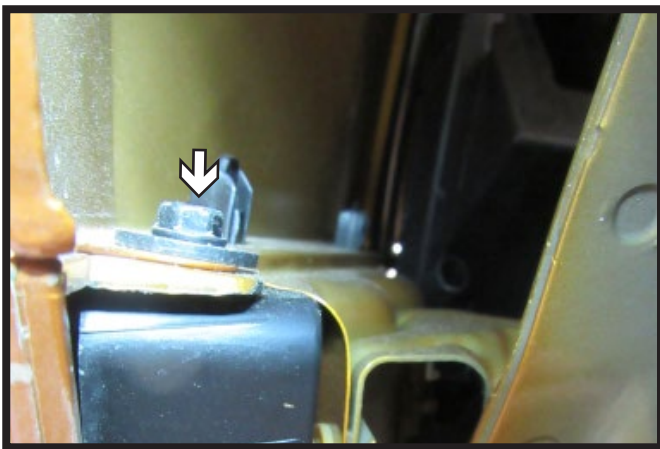
BX1730
2018 Chevy Equinox
Installation Instructions



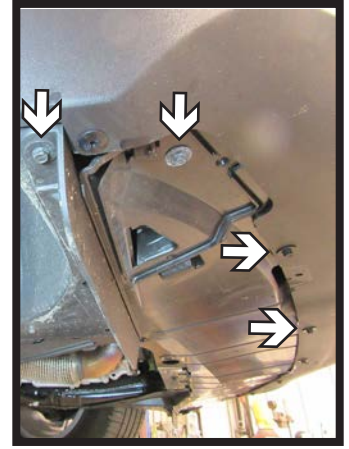
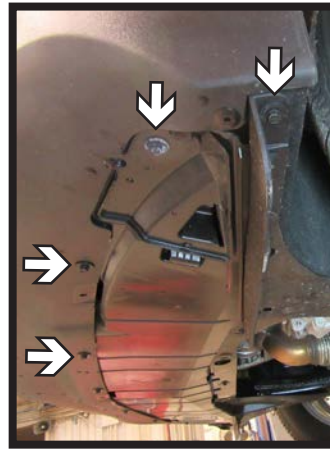
1. Using a T15 Torx, remove the six (6) screws from the top edge of the fascia. There are three (3) on each side.



2. Using a T15 Torx, remove the five (5) bolts from along the edge of the wheel well. Do this on both sides of the vehicle.

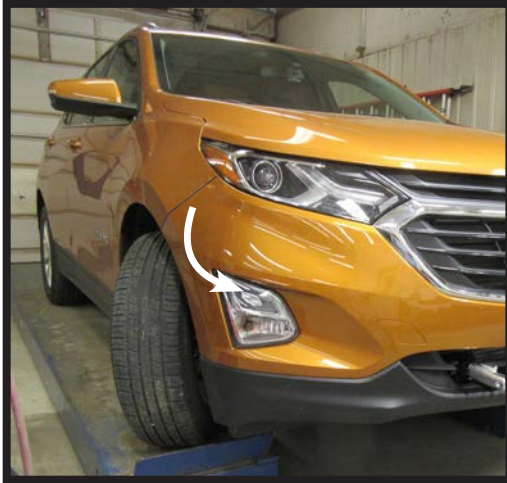


3. Pull back the wheel well liner. Then using a 7MM socket, remove the bolt from inside the wheel well. Do this for both sides of the vehicle.

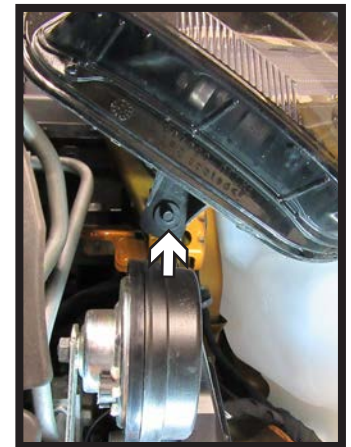
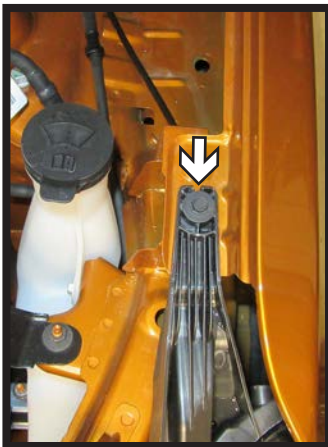


4. Using a 7MM socket, remove the eight (8) bolts from the underside of the fascia, four (4) on each side.

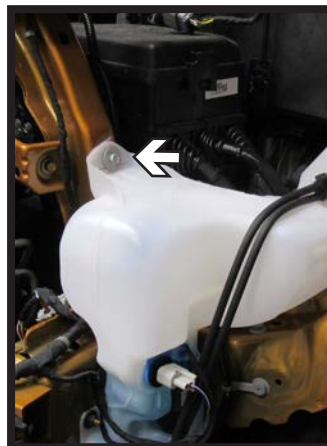
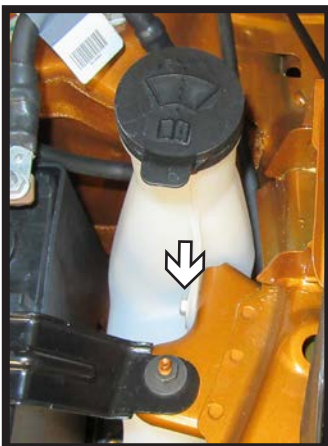
BX1730
2018 Chevy Equinox
Installation Instructions



5. Pull the corners of the fascia away from the vehicle. Disconnect all electrical connections and pull the fascia from the vehicle. Set aside to be reinstalled later.



6. Using a 7MM socket remove the four (4) bolts attaching the driver side head light. Remove and set aside to be reinstalled later.



7. Using a 10MM socket, remove the three (3) bolts (white arrows) and one (1) nut (gray arrow) holding the windshield washer reservoir. Unplug all lines and set aside to be reinstalled later.

BX1730
2018 Chevy Equinox
Installation Instructions



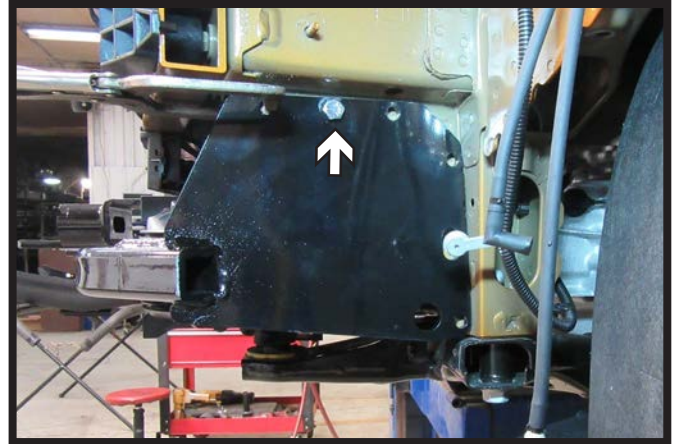
8. Remove the temperature sensor (gray) and then remove the four (4) push pins (white) holding the plastic piece on the front of the grill. Set aside to be trimmed and reinstalled later.



9. Use a hammer to tap the metal frame pieces inward slightly, about 1/8", to allow clearance for baseplate. Do this on both sides of the vehicle.



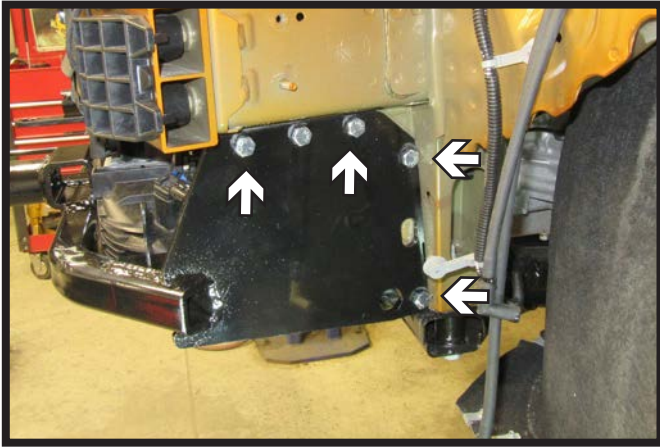
10. Slide baseplate straight up into place and use clamps to hold in place.



11. Drill one (1) 3/8" hole and install 3/8" bolt with nylon lock nut, tighten fully. Do this on both sides of the baseplate. Ensure baseplate is level.

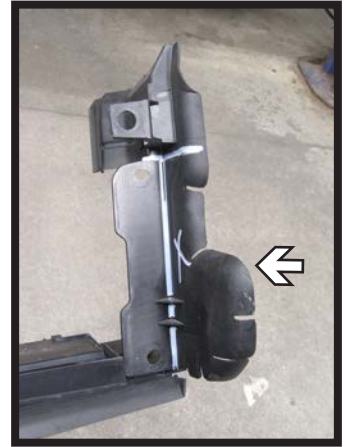
**** Use Loctite® Red on all bolt threads and tighten all bolts to the appropriate torque.**

BX1730
2018 Chevy Equinox
Installation Instructions

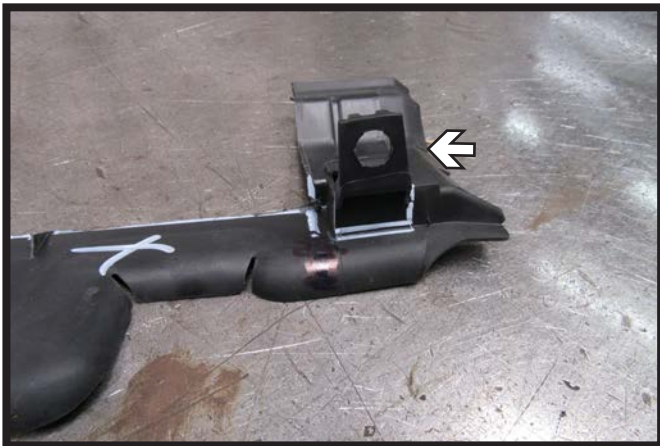


12. Drill the remaining four (4) holes on each side of the baseplate and install the 3/8" hardware.

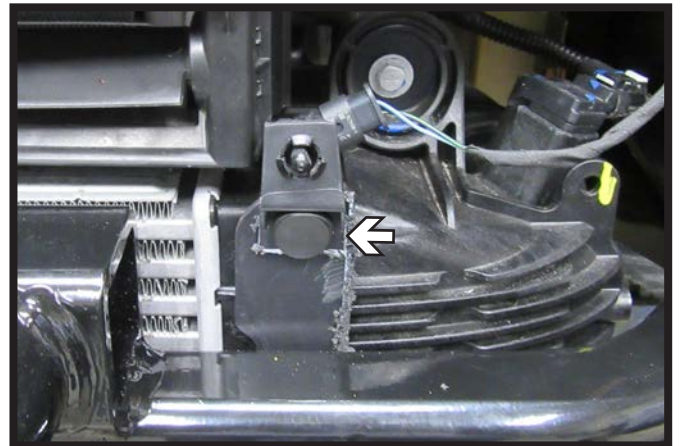
** Use Loctite® Red on all bolt threads and tighten all bolts to the appropriate torque.



13. Using a utility knife, trim the indicated areas from the plastic piece before reinstalling to the front of the grill using existing push pins.



14. Remove the temperature sensor holder from the removed driver side plastic piece to be reinstalled on the vehicle.



15. Drill a 1/4" hole in temperature sensor holder and reinstall on the grill using existing push pin. Reinstall temperature sensor.

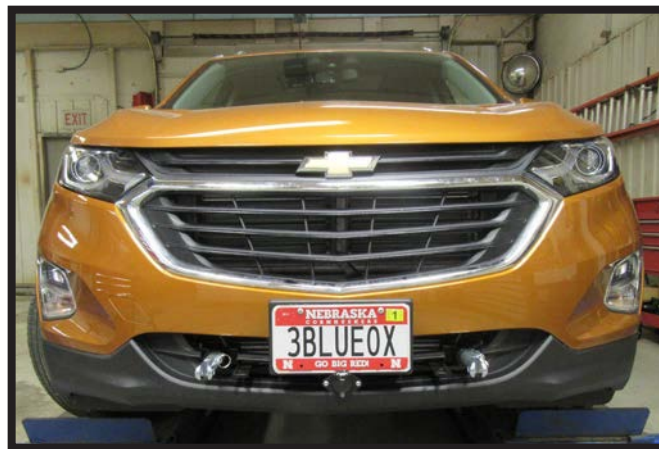
BX1730
2018 Chevy Equinox
Installation Instructions



16. Reinstall the windshield washer fluid reservoir using existing hard ware except for the indicated bolt, use the 6MM bolt and 1/4" flat washer provided to attach to the baseplate. Reconnect all lines. Reinstall driver side headlight.



17. Attach the permanent baseplate safety cables to the provided convenience link on the baseplate. The photo above shows the recommended installation of the cables to frame of vehicle. Additional options may interfere with suggested mounting; in this case, secure the cables to a solid piece of the frame as described in the General Information sheet. Be sure the safety cables do not rub against any hoses or moving parts. Do this on **BOTH** sides of the vehicle.



18. Hold the fascia as close to its original position, mark and trim the fascia around the convenience links and attachment tabs. Reinstall the fascia.

General Information

1. **It is the owner's responsibility to inspect all towing equipment for cracked welds, missing or worn parts and loose bolts before each towing trip.** Be sure to use Loctite® Red on all bolts and tighten to the recommended specifications.
2. **It is the owner's responsibility to hook up all towing equipment per manufacturer's instructions/ recommendations.**
3. Remove the attachment tabs when not in use (if applicable).

Notice To Baseplate Installer

1. It is YOUR responsibility to watch for:

- Oil cooler and air conditioner lines
- Electrical wires and hoses
- Missing parts or attaching points on the frame

** If the baseplate is improperly installed and is against a wire or hose, it could cause fluid leaks or electrical shorts some time after the actual baseplate installation.

Permanent Baseplate Safety Cable Installation

Permanent baseplate safety cables are strongly recommended when towing a vehicle with a tow bar. The principle function of the permanent baseplate safety cables is to prevent the towed vehicle from breaking loose in the event the connection between the frame of the towed vehicle and the baseplate fails or becomes disconnected. The cables must be connected from the baseplate to the frame rail or cross member of the vehicle's frame. The illustrations below show the possible arrangements recommended by Blue Ox®. Each permanent baseplate safety cable must have an adequate weight rating for the towing system. The weight rating of the two (2) cables together will not qualify.

Do not mount the permanent baseplate safety cables against wires, hoses or brake lines.

These permanent baseplate safety cables should remain installed as long as the baseplate is installed on the vehicle. Permanent baseplate safety cables are to be used in conjunction with, and NOT a replacement for legally required safety cables attaching the towed vehicle to the towing vehicle.

Option #1

(Baseplates with Convenience Link Tabs)



Option #2

(Baseplates with out Convenience Link Tabs)

