



BX1716

2015-18 Chevy Suburban/Tahoe
(No Adaptive Cruise or Z71)

2015-18 GMC Yukon/Yukon XL (Includes Denali)
(No Adaptive Cruise or Z71)

2015-18 Cadillac Escalade (Includes Adaptive Cruise)

Installation Instructions

Please read **BOTH** these Installation Instructions and the General Information sheet prior to installing or operating this equipment.



Attachment Tab Height: 17-1/2"

Attachment Tab Width: 32-1/2"

1. Blue Ox® towing products and accessories are intended to be installed by Blue Ox® Dealers who are familiar with our products and have the equipment and knowledge necessary to do "it work".
2. Many Blue Ox® baseplates are designed to use existing holes and hardware to mount the baseplate to the towed vehicle. Even though bolts are there, do not assume they are adequate for baseplate mounting. Always use the hardware supplied in the hardware kit and existing hardware as specified in the installation instructions.



WARNING

Failure to read and follow these instructions could result in separation of the towed vehicle from the tow bar, causing property damage, loss of towed vehicle, personal injury or death.

Reference your vehicle owner's manual for manufacturer's towing specifications.

BX1716

2015-18 Chevy Suburban/Tahoe & GMC Yukon/Yukon XL (No Adaptive Cruise or Z71)
2015-18 Cadillac Escalade (Includes Adaptive Cruise)
Installation Instructions

Bolt Torque Specifications

Torque in Foot-Pounds for Inch Bolts

Bolt Size	Grade 5	Grade 8
1/4"	10	14
5/16"	19	29
3/8"	33	47
7/16"	54	78
1/2"	78	119
5/8"	154	230
3/4"	257	380

Bolt Torque Specifications

Torque in Foot-Pounds for Metric Bolts

Bolt Size	Grade 8.8	Grade 10.9
6MM	6	8
8MM	16	22
10MM	31	40
12MM	54	70
14MM	89	117
16MM	161	230
18MM	222	318

Instruction Notes: The fascia cover and fascia are removed and reinstalled for the baseplate installation. Some drilling and trimming is required.

Place all components that are removed on a flat, sturdy surface. All items will be reinstalled unless otherwise noted after the baseplate is installed.

The dimensional variations between otherwise identical vehicles can be considerable. While the baseplate was designed for easy installation, it may be necessary to tailor the baseplate slightly to compensate for vehicle manufacturer's tolerances.

The BX8848 4-Diode Wiring Kit is recommended for this vehicle.

NOTICE

- Handling of some cosmetic parts when installing this product may require the use of protective covers, rags, specialty tools, etc. to prevent damage.
- When using power drills be aware of the dangers of torque and drill bit length.
- When using a reciprocating saw be aware of objects behind the cutting surface.
- Use a good quality paint to spray cut edges of frame to prevent rusting.
- Be sure that **ALL** electrical connections are plugged in and accessories are functioning properly before reinstalling the fascia.
- The baseplate is computer tested to your vehicle's GVWR, exceeding this weight will void the manufacturer's warranty.
- Be sure to use a sufficient amount of Loctite® Red on all bolt threads before tightening. Tighten all bolts according to the torque chart provided.
- Dealer or installer be certain the user receives these instruction sheets.
- If the baseplate is in an accident, it must be replaced. **DO NOT** use it again! An accident can cause unseen damage and using it again could result in more damage or serious injury. **DO NOT** use the baseplate if it is damaged or missing parts.

BX1716

2015-18 Chevy Suburban/Tahoe & GMC Yukon/Yukon XL (No Adaptive Cruise or Z71)
2015-18 Cadillac Escalade (Includes Adaptive Cruise)

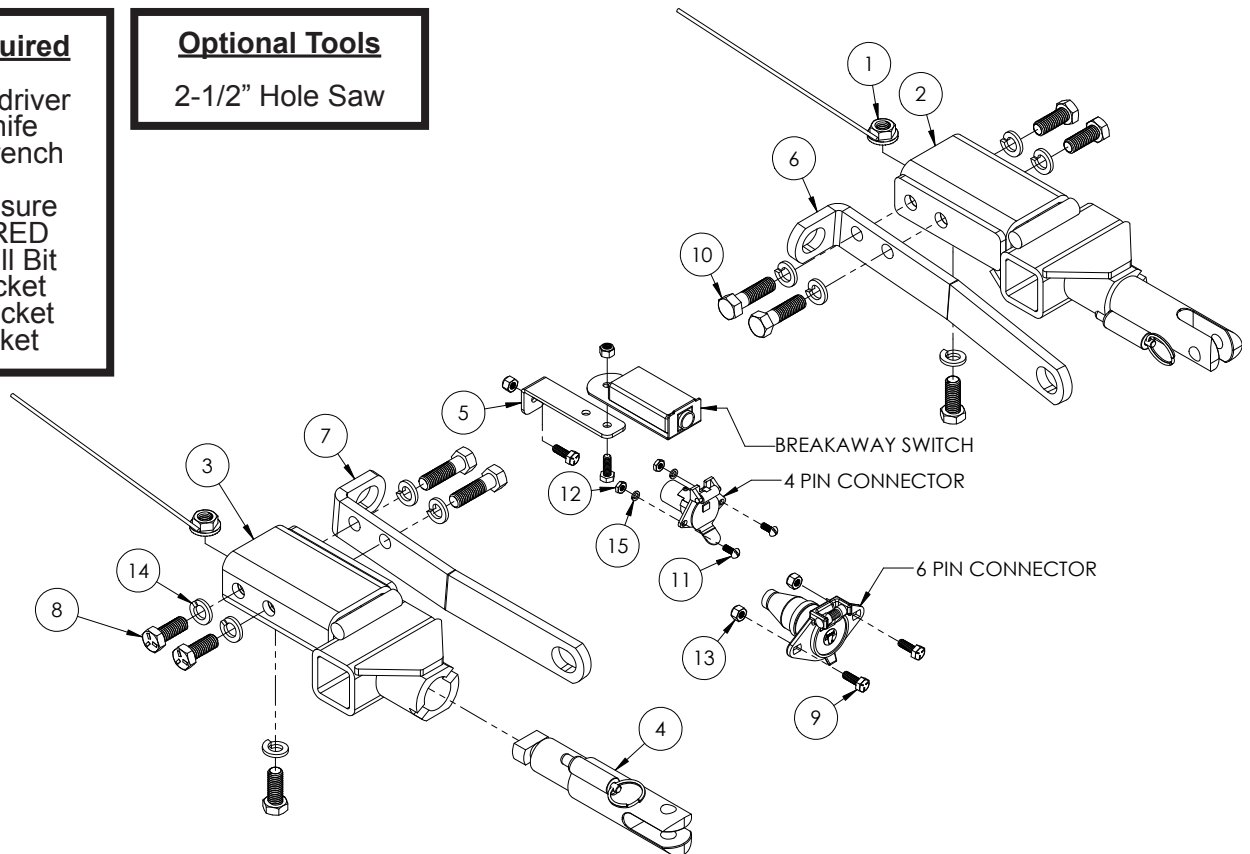
Installation Instructions

Tools Required

Flat Screwdriver
Utility Knife
Torque Wrench
Drill
Tape Measure
Loctite® RED
17/32" Drill Bit
7MM Socket
10MM Socket
3/4" Socket

Optional Tools

2-1/2" Hole Saw



Item No.	Part No.	Description	Qty.
1.....	61-4029.....	1/2"-13 Whiz Nut w/ 10" Wire.....	2
2.....	61-7347.....	BX1716 DS Baseplate.....	1
3.....	61-7348.....	BX1716 PS Baseplate.....	1
4.....	62-3468.....	Attachment Tab Assembly with Hole.....	2
5.....	102-7186.....	Breakaway Bracket.....	1
6.....	102-7480.....	DS Convenience Link.....	1
7.....	102-7481.....	PS Convenience Link.....	1
8.....	201-0011.....	1/2"-13 x 1-1/4" Hex Head Bolt, Grade 5, ZP.....	6
9.....	201-0050.....	1/4"-20 x 3/4" Hex Head Bolt, Grade 5, ZP.....	4
10.....	201-0068.....	1/2"-13 x 1-3/4" Hex Head Bolt, Grade 5, ZP.....	4
11.....	201-0192.....	#10-32 1/2" Round Slotted Head Screw.....	2
12.....	202-0047.....	#10-32 Hex Nut.....	2
13.....	202-0102.....	1/4"-20 Hex Nylon Nut, ZP.....	4
14.....	203-0012.....	1/2" Lock Washer, ZP.....	10
15.....	203-0054.....	#10 Lock Washer, ZP.....	2
16.....	226-0049(not shown).....	Class IV Safety Cables.....	2
17.....	229-0512(not shown).....	3/8" Quicklink, ZP.....	2
18.....	290-0437(not shown).....	Black Cap Plug Receiver.....	2

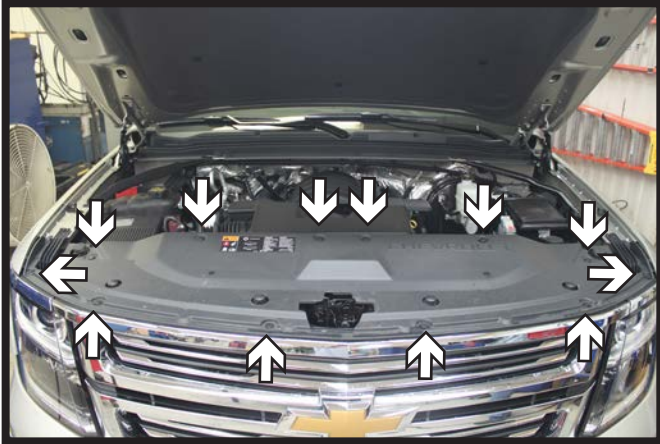
Important:

Use only genuine factory replacement parts on your baseplate. Do **NOT** substitute homemade or non-typical parts. If a bolt is lost or in need of replacement, for your safety and the preservation of your baseplate, be sure to use a replacement bolt of the same grade (In most cases it will be Grade 5, please reference the parts list above). Replacement parts may be ordered through your nearest Blue Ox® Dealer or Distributor. Failing to follow and/or altering these installation instructions in either installation or required equipment will void the manufacturer's warranty. Towing behind a non-motorized vehicle will void the warranty.

BX1716

2015-18 Chevy Suburban/Tahoe & GMC Yukon/Yukon XL (No Adaptive Cruise or Z71)
2015-18 Cadillac Escalade (Includes Adaptive Cruise)
Installation Instructions

Chevy Suburban/Tahoe Models



1. Remove the twelve (12) push pins from the fascia cover and set aside.

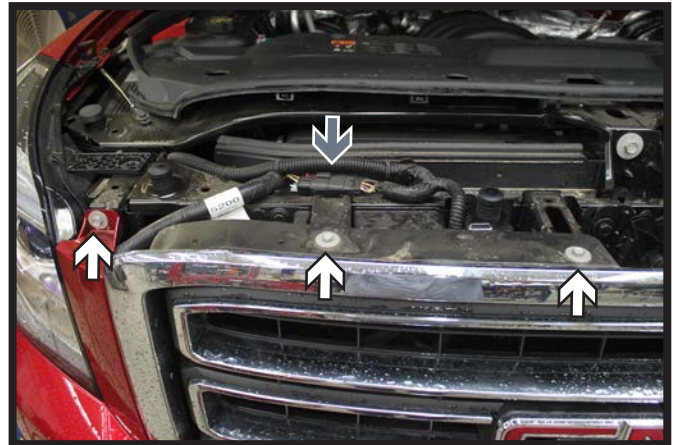


2. Using a 10MM socket, remove the six (6) screws from the top edge of the fascia (white). There are three (3) on each side. On the passenger side, disconnect the wiring harness (gray).

GMC Yukon/Yukon XL Models



1. Remove the six (6) push pins from the fascia cover and unsnap the front edge. Set the cover aside.

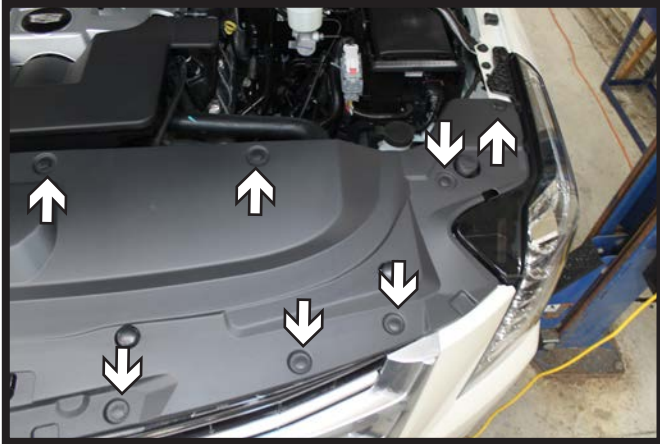


2. Using a 10MM socket, remove the six (6) screws from the top edge of the fascia (white). There are three (3) on each side. On the passenger side, disconnect the wiring harness (gray).

BX1716

2015-18 Chevy Suburban/Tahoe & GMC Yukon/Yukon XL (No Adaptive Cruise or Z71)
2015-18 Cadillac Escalade (Includes Adaptive Cruise)
Installation Instructions

Cadillac Escalade Models



1. Remove the fourteen (14) push pins from the fascia cover and set aside. There are seven (7) on each side.



- 2a. Using a 10MM socket, remove the eight (8) screws from the top edge of the fascia. There are four (4) on each side. On the passenger side only, disconnect the plug (black) and remove the two (2) clips holding the wiring loom (gray).



- 2b. Using a small flat screwdriver, release the two (2) tabs down behind the grille prior to removing the fascia on step 5.

BX1716

2015-18 Chevy Suburban/Tahoe & GMC Yukon/Yukon XL (No Adaptive Cruise or Z71) 2015-18 Cadillac Escalade (Includes Adaptive Cruise) Installation Instructions



3. Using a 7MM socket, remove the screws from the edge of the wheel well. Do this on both sides of the vehicle. Qty of screws vary per model.



4. Using a 10MM socket, remove the eight (8) screws from the underside of the fascia. There are three (3) on each side and two (2) in the middle. Remove the two (2) push pins located in front of the tires (gray).



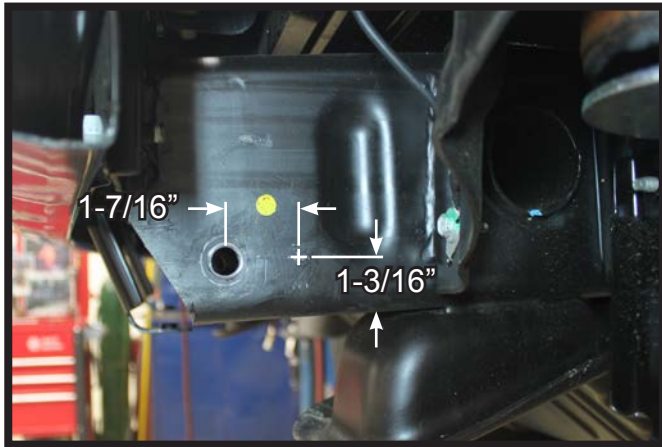
5. ⚠ Gently pry the clips of the corners of the fascia loose from the fender. Behind the grille towards the base, pop loose the two (2) clips. Remove the fascia from the vehicle and set aside.



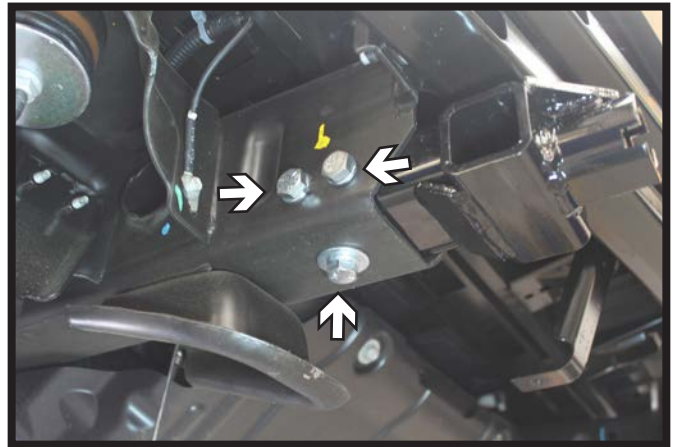
6. Using a 17/32" drill bit, drill out the existing hole in the bottom of the frame. Do this on both sides of the vehicle.

BX1716

2015-18 Chevy Suburban/Tahoe & GMC Yukon/Yukon XL (No Adaptive Cruise or Z71)
2015-18 Cadillac Escalade (Includes Adaptive Cruise)
Installation Instructions



7. Using a 17/32" drill bit, drill a hole thru the frame 1-7/16" back from the existing hole and 1-3/16" up from the bottom of the frame. Do this on the outside DS frame and the inner PS frame. (DS shown)



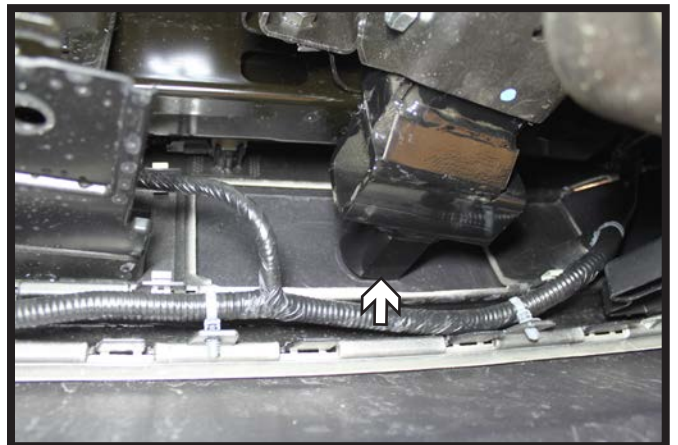
8. Slide the baseplate into the frame pocket and install 1/2"-13 x 1-1/4" bolts with 1/2" lock washers into the outside frame holes and the bottom hole. On the bottom hole use a 1/2" whiz nut on the inside of the frame, using the factory hole for access. Fully tighten all fasteners until the frame squeezes against the baseplate. Do this on both sides of the vehicle.



9. Partially reinstall the fascia with a couple of screws along the top and pull the fascia tight against the baseplate. Trace around the attachment tab tube for trimming (Left). Do this on both sides of the vehicle. Remove and trim out the fascia around the attachment tab tubes.

Escalade Models Only: Trim the inner layer of plastic from the inside of the fascia prior to holding up the fascia for attachment tab tube trimming. (Right) Do this on both sides of the fascia.

Optional: Center a 2-1/2" hole saw over the marked area and drill thru the fascia.



BX1716

2015-18 Chevy Suburban/Tahoe & GMC Yukon/Yukon XL (No Adaptive Cruise or Z71)
2015-18 Cadillac Escalade (Includes Adaptive Cruise)
Installation Instructions



10. Partially reinstall the fascia again. On the inside of the frame, hold the convenience link against the frame and fascia and mark the area to trim. Do this on both sides of the vehicle. Remove the fascia and trim.



11. Install the convenience link to the frame with 1/2"-13 x 1-3/4" bolts with 1/2" lock washers. Do this on both sides of the vehicle. Tighten down until the frame squeezes against the baseplate.



12. Attach the permanent baseplate safety cables to the provided convenience link on the baseplate. The photo above shows the recommended installation of the cables to frame of vehicle. Additional options may interfere with suggested mounting; in this case, secure the cables to a solid piece of the frame as described in the General Information sheet. Be sure the safety cables do not rub against any hoses or moving parts. Do this on **BOTH** sides of the vehicle.

BX1716

2015-18 Chevy Suburban/Tahoe & GMC Yukon/Yukon XL (No Adaptive Cruise or Z71)
2015-18 Cadillac Escalade (Includes Adaptive Cruise)
Installation Instructions



13. Reinstall the fascia and fascia cover.



General Information

1. **It is the owner's responsibility to inspect all towing equipment for cracked welds, missing or worn parts and loose bolts before each towing trip.** Be sure to use Loctite® Red on all bolts and tighten to the recommended specifications.
2. **It is the owner's responsibility to hook up all towing equipment per manufacturer's instructions/ recommendations.**
3. Remove the attachment tabs when not in use (if applicable).

Notice To Baseplate Installer

1. It is YOUR responsibility to watch for:

- Oil cooler and air conditioner lines
- Electrical wires and hoses
- Missing parts or attaching points on the frame

** If the baseplate is improperly installed and is against a wire or hose, it could cause fluid leaks or electrical shorts some time after the actual baseplate installation.

Permanent Baseplate Safety Cable Installation

Permanent baseplate safety cables are strongly recommended when towing a vehicle with a tow bar. The principle function of the permanent baseplate safety cables is to prevent the towed vehicle from breaking loose in the event the connection between the frame of the towed vehicle and the baseplate fails or becomes disconnected. The cables must be connected from the baseplate to the frame rail or cross member of the vehicle's frame. The illustrations below show the possible arrangements recommended by Blue Ox®. Each permanent baseplate safety cable must have an adequate weight rating for the towing system. The weight rating of the two (2) cables together will not qualify.

Do not mount the permanent baseplate safety cables against wires, hoses or brake lines.

These permanent baseplate safety cables should remain installed as long as the baseplate is installed on the vehicle. Permanent baseplate safety cables are to be used in conjunction with, and NOT a replacement for legally required safety cables attaching the towed vehicle to the towing vehicle.

Option #1

(Baseplates with Convenience Link Tabs)



Option #2

(Baseplates with out Convenience Link Tabs)

