



BX1676

2007-14 Cadillac Escalade (Includes Hybrid)
2007-13 Chevy Avalanche 1500
2007-14 Chevy Suburban 1500
2007-14 Chevy Tahoe 1500 (Includes Hybrid)
2007-14 GMC Yukon 1500 (Includes Denali)
Installation Instructions

Attachment Tab Height: 17-1/4"

Attachment Tab Width: 31-1/4"

Please read BOTH these Installation Instructions and the General Instructions prior to installing or operating this equipment.

1. Blue Ox® towing products and accessories are intended to be installed by Blue Ox® Dealers who are familiar with our products and have the equipment and knowledge necessary to do "it work".
2. Many Blue Ox® baseplates are designed to use existing holes and hardware to mount the baseplate to the towed vehicle. Even though bolts are there, do not assume they are adequate for baseplate mounting. Always use the hardware supplied in the hardware kit and existing hardware as specified in the installation instructions.



Reference your vehicle owner's manual for manufacturer's towing specifications.

Bolt Torque Specifications

Torque in Foot-Pounds for Inch Bolts

Bolt Size	Grade 5	Grade 8
1/4"	10	14
5/16"	19	29
3/8"	33	47
7/16"	54	78
1/2"	78	119
5/8"	154	230
3/4"	257	380

Bolt Torque Specifications

Torque in Foot-Pounds for Metric Bolts

Bolt Size	Grade 8.8	Grade 10.9
6MM	6	8
8MM	16	22
10MM	31	40
12MM	54	70
14MM	89	117
16MM	161	230
18MM	222	318



WARNING

Failure to read and follow these instructions could result in separation of the towed vehicle from the tow bar, causing property damage, loss of towed vehicle, personal injury or death.

BX1676
2007-14 Cadillac Escalade (Includes Hybrid)
2007-13 Chevy Avalanche 1500
2007-14 Chevy Suburban/Tahoe 1500 (Includes Hybrid)
2007-14 GMC Yukon 1500 (Includes Denali)
Installation Instructions

Instruction Notes: The fascia is removed and reinstalled for the baseplate installation. Some drilling and trimming is required.

Place all components that are removed on a flat, sturdy surface. All items will be reinstalled unless otherwise noted after the baseplate is installed.

The dimensional variations between otherwise identical vehicles can be considerable. While the baseplate was designed for easy installation, it may be necessary to tailor the baseplate slightly to compensate for vehicle manufacturer's tolerances.

The BX8848 4-Diode Wiring Kit is recommended for the Cadillac Escalade Hybrid.

The BX8869 Tail Light Wiring Kit is recommended for all other vehicles.



Possible locations for the BX8869 wiring kit.
Location can vary depending on model of vehicle.

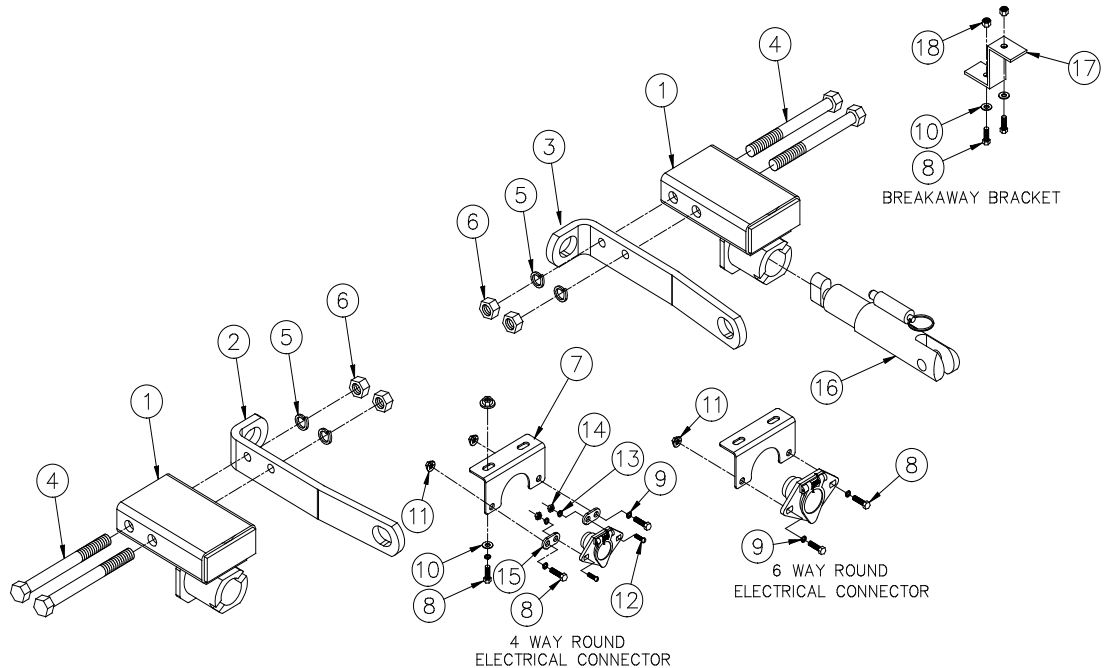
NOTICE

- Handling of some cosmetic parts when installing this product may require the use of protective covers, rags, specialty tools, etc. to prevent damage.
- When using power drills be aware of the dangers of torque and drill bit length.
- When using a reciprocating saw be aware of objects behind the cutting surface.
- Use a good quality paint to spray cut edges of frame to prevent rusting.
- Be sure that **ALL** electrical connections are plugged in and accessories are functioning properly before reinstalling the fascia.
- The baseplate is computer tested to your vehicle's GVWR, exceeding this weight will void the manufacturer's warranty.
- Be sure to use a sufficient amount of Loctite® Red on all bolt threads before tightening. Tighten all bolts according to the torque chart provided.
- Dealer or installer be certain the user receives these instruction sheets.
- If the baseplate is in an accident, it must be replaced. **DO NOT** use it again! An accident can cause unseen damage and using it again could result in more damage or serious injury. **DO NOT** use the baseplate if it is damaged or missing parts.

BX1676
2007-14 Cadillac Escalade (Includes Hybrid)
2007-13 Chevy Avalanche 1500
2007-14 Chevy Suburban/Tahoe 1500 (Includes Hybrid)
2007-14 GMC Yukon 1500 (Includes Denali)
Installation Instructions

Tools Required

Utility Knife
Phillips Screwdriver
Torque Wrench
Drill
Loctite® RED
3/16" Drill Bit
1/4" Drill Bit
17/32" Drill Bit
1-1/2" Hole Saw
7MM Socket
10MM Socket
18MM Socket
21MM Socket
7/16" Socket
3/4" Socket
5/8" Wrench
3/4" Wrench



Item No.	Part No.	Description	Qty.
1.....	61-6248	BX1676 Baseplate	2
2.....	102-6797	Convenience Link, 12", PS	1
3.....	102-6798	Convenience Link, 12" DS	1
4.....	201-0786	1/2"-13 x 5" Hex Head Bolt, Grade 5, ZP	4
5.....	203-0012	1/2" Lock Washer, ZP	4
6.....	202-0094	1/2"-13 Hex Nylon Lock Nut, ZP	4
7.....	101-6135	90 Degree Electrical Bracket	1
8.....	201-0050	1/4"-20 x 3/4" Hex Head Bolt, Grade 5, ZP.....	6
9.....	203-0008	1/4" Lock Washer, ZP	4
10.....	203-0001	1/4" Flat Washer, ZP.....	4
11.....	202-0069	1/4"-20 Hex Flange Whiz Lock Nut, ZP	4
12.....	201-0192	#10-32 1/2" Round Slotted Head Screw	2
13.....	203-0054	#10 Lock Washer, ZP.....	2
14.....	202-0047	#10-32 Hex Nut.....	2
15.....	101-5822	4 Way Connector Adapter	2
16.....	62-3468	Attachment Tab Assembly with Hole.....	2
17.....	102-7056	BX1676 Breakaway Bracket	1
18.....	202-0102	1/4"-20 Hex Nylon Nut, ZP.....	2
19.....	203-0005(not shown)	1/2" Flat Washer, ZP	8
20.....	226-0049(not shown)	Class IV Safety Cables	2
21.....	229-0512(not shown)	1/2" Quicklink, ZP	2
22.....	290-0437(not shown)	Black Cap Plug Receiver	2
23.....	229-0536(not shown)	6.3MM Plastic Rivets	4

Important:

Use only genuine factory replacement parts on your baseplate. Do **NOT** substitute homemade or non-typical parts. If a bolt is lost or in need of replacement, for your safety and the preservation of your baseplate, be sure to use a replacement bolt of the same grade (In most cases it will be Grade 5, please reference the parts list above). Replacement parts may be ordered through your nearest Blue Ox® Dealer or Distributor. Failing to follow and/or altering these installation instructions in either installation or required equipment will void the manufacturer's warranty. Towing behind a non-motorized vehicle will void the warranty.

BX1676
2007-14 Cadillac Escalade (Includes Hybrid)
2007-13 Chevy Avalanche 1500
2007-14 Chevy Suburban/Tahoe 1500 (Includes Hybrid)
2007-14 GMC Yukon 1500 (Includes Denali)
Installation Instructions



1. **Cadillac Escalade:** Remove the nine (9) push pins from the top cover. There are three (3) in the center (gray) and three (3) on either side of the vehicle (white).



2. **All Vehicles Except Yukon:** Using a 10MM socket, remove the three (3) screws from the top edge of the fascia. Repeat on the other side of the vehicle.

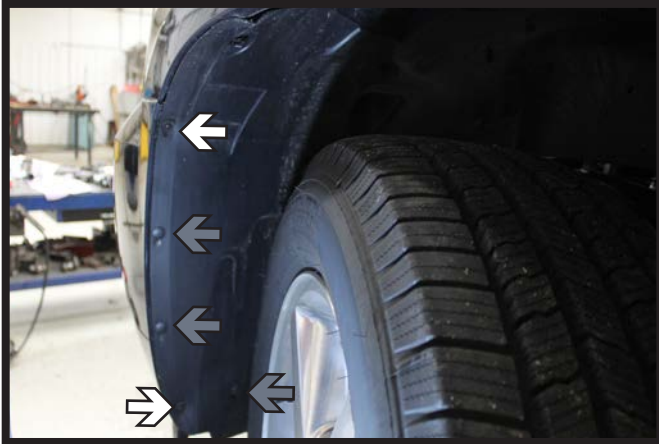


3. **GMC Yukon:** Using a 10MM socket, remove the three (3) screws from the top edge of the fascia (white). Then using a 7MM socket remove the one (1) screw from the fascia (gray). Repeat on the other side of the vehicle.

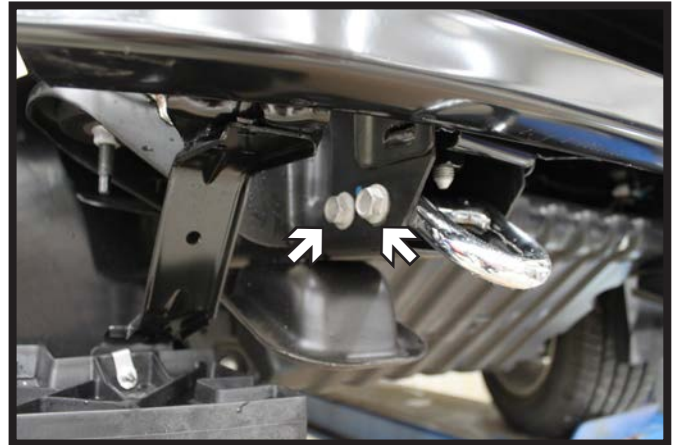


4. Using a 7MM socket, remove the one (1) screw from the outer edge of the lower fascia (gray). Then using a 7MM or 10MM socket, depending on vehicle type, remove the two (2) inner screws (white). Repeat on the other side of vehicle.

BX1676
2007-14 Cadillac Escalade (Includes Hybrid)
2007-13 Chevy Avalanche 1500
2007-14 Chevy Suburban/Tahoe 1500 (Includes Hybrid)
2007-14 GMC Yukon 1500 (Includes Denali)
Installation Instructions



5. Using a 7MM socket, remove the two (2) screws from the wheel well(white). Then remove the three (3) push pins (gray). Repeat on the other side of the vehicle. Pull the fascia from the vehicle, unhooking any electrical connections.



6. Using a 18MM socket, remove the two (2) bolts from the tow hooks. Repeat on the other side of the vehicle. The tow hooks and bolts will not be reinstalled.



7. Using a 18MM or 21MM socket, depending on the vehicle, remove the bolt from the top of the bumper. Reinstall with three (3) or four (4) washers as shown, to provide clearance for the baseplate. Repeat on the other side of the vehicle.



8. Insert the baseplate into the frame, align the holes and insert a 1/2"-13 x 5" bolt and 1/2"-13 nut into the front hole. Snug the front bolt to keep the baseplate from moving. Do this on both sides of the vehicle.

BX1676
2007-14 Cadillac Escalade (Includes Hybrid)
2007-13 Chevy Avalanche 1500
2007-14 Chevy Suburban/Tahoe 1500 (Includes Hybrid)
2007-14 GMC Yukon 1500 (Includes Denali)
Installation Instructions



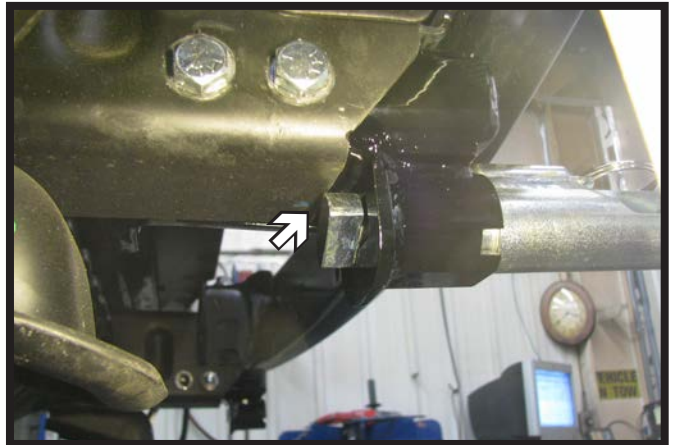
9. Using a 17/32" drill bit and the baseplate as a guide, drill out the back hole thru the frame. Do this on both sides of the vehicle.



10. Remove the nut from the front bolt and attach the convenience link. Reinstall the front nut with a 1/2" lock washer and insert a 1/2"-13 x 5" bolt, 1/2" lock washer and 1/2"-13 nut into the back hole and tighten down. Repeat on the other side of the vehicle.

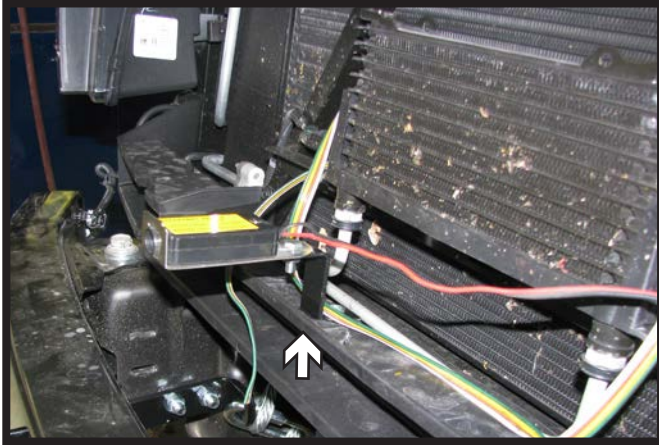


11. Attach the permanent baseplate safety cables to the provided convenience link on the baseplate. The photo above shows the recommended installation of the cables to frame of vehicle. Additional options may interfere with suggested mounting; in this case, secure the cables to a solid piece of the frame as described in the instructions included with the permanent baseplate safety cables. Be sure the safety cables do not rub against any hoses or moving parts. Do this on **BOTH** sides of the vehicle.



12. If the attachment tab hits the frame and will not lock. Use a hammer and bend the frame up until tab clears the frame.

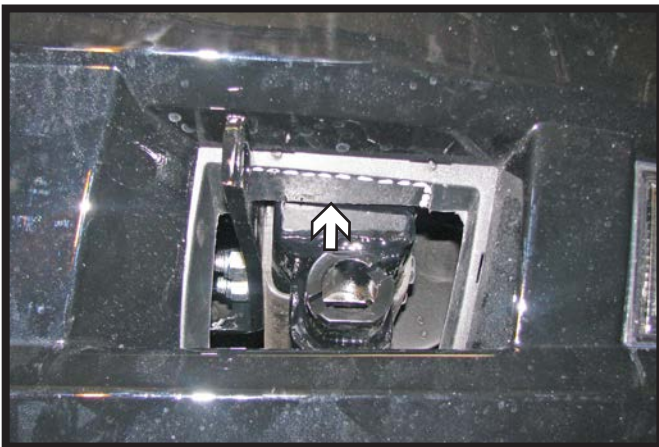
BX1676
2007-14 Cadillac Escalade (Includes Hybrid)
2007-13 Chevy Avalanche 1500
2007-14 Chevy Suburban/Tahoe 1500 (Includes Hybrid)
2007-14 GMC Yukon 1500 (Includes Denali)
Installation Instructions



13. If installing a breakaway, attach the bracket to crossmember using 1/4"-20 x 3/4" bolt, 1/4" flat washer and 1/4"-20 nut.



14. Hold the fascia up to the vehicle as close to its original position and mark for baseplate clearance. Trim as needed, with a utility knife, then reinstall the fascia.



15. Some models may require additional trimming of the upper tow hook pocket to allow for baseplate clearance.



16. Possible location for the electrical bracket.

BX1676

2007-14 Cadillac Escalade (Includes Hybrid)

2007-13 Chevy Avalanche 1500

2007-14 Chevy Suburban/Tahoe 1500 (Includes Hybrid)

2007-14 GMC Yukon 1500 (Includes Denali)

Installation Instructions



17. **Cadillac Escalade:** On the front bumper drill out the license plate bracket rivets with a 3/16" drill bit (left). Attach the electrical bracket to the license plate bracket with 1/4"-20 x 3/4" bolts, 1/4" lock washers and 1/4"-20 whiz nuts (right). Reattach the license plate bracket to the vehicle with the plastic rivets.



General Information

1. **It is the owner's responsibility to inspect all towing equipment for cracked welds, missing or worn parts and loose bolts before each towing trip.** Be sure to use Loctite® Red on all bolts and tighten to the recommended specifications.
2. **It is the owner's responsibility to hook up all towing equipment per manufacturer's instructions/ recommendations.**
3. Remove the attachment tabs when not in use (if applicable).

Notice To Baseplate Installer

1. **It is YOUR responsibility to watch for:**

- Oil cooler and air conditioner lines
- Electrical wires and hoses
- Missing parts or attaching points on the frame

**** If the baseplate is improperly installed and is against a wire or hose, it could cause fluid leaks or electrical shorts some time after the actual baseplate installation.**

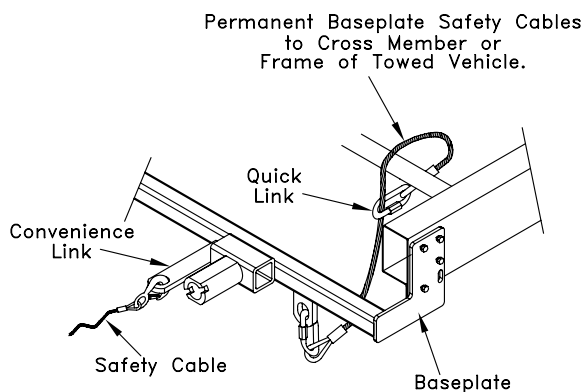
Permanent Baseplate Safety Cable Installation

Permanent baseplate safety cables are strongly recommended when towing a vehicle with a tow bar. The principle function of the permanent baseplate safety cables is to prevent the towed vehicle from breaking loose in the event the connection between the frame of the towed vehicle and the baseplate fails or becomes disconnected. The cables must be connected from the baseplate to the frame rail or cross member of the vehicle's frame. The illustrations below show the possible arrangements recommended by Blue Ox®. Each permanent baseplate safety cable must have an adequate weight rating for the towing system. The weight rating of the two (2) cables together will not qualify.

Do not mount the permanent baseplate safety cables against wires, hoses or brake lines.

These permanent baseplate safety cables should remain installed as long as the baseplate is installed on the vehicle. Permanent baseplate safety cables are to be used in conjunction with, and NOT a replacement for legally required safety cables attaching the towed vehicle to the towing vehicle.

OPTION #1



OPTION #2

