



BX1149

2022 Jeep Grand Wagoneer (No Tow Hooks) (Includes Adaptive Cruise Control, Turbo, & Shuttters) Installation Instructions

Attachment Tab Height: 23"

Attachment Tab Width: 37"

Serial Number

Please read BOTH these Installation Instructions and the General Information sheet prior to installing or operating this equipment.

1. Blue Ox® towing products and accessories are intended to be installed by Blue Ox® Dealers who are familiar with our products and have the equipment and knowledge necessary to do "fit work".
2. Many Blue Ox® baseplates are designed to use existing holes and hardware to mount the baseplate to the towed vehicle. Even though bolts are there, do not assume they are adequate for baseplate mounting. Always use the hardware supplied in the hardware kit and existing hardware as specified in the installation instructions.

Bolt Torque Specifications

Torque in Foot-Pounds for Inch Bolts

Bolt Size	Grade 5	Grade 8
1/4"	10	14
5/16"	19	29
3/8"	33	47
7/16"	54	78
1/2"	78	119
5/8"	154	230
3/4"	257	380



Bolt Torque Specifications

Torque in Foot-Pounds for Metric Bolts

Bolt Size	Grade 8.8	Grade 10.9
6MM	6	8
8MM	16	22
10MM	31	40
12MM	54	70
14MM	89	117
16MM	161	230
18MM	222	318

Reference your vehicle owner's manual for manufacturer's towing specifications.



WARNING

Failure to read and follow these instructions could result in separation of the towed vehicle from the tow bar, causing property damage, loss of towed vehicle, personal injury or death.

BX1149
2022 Jeep Grand Wagoneer (No Tow Hooks)
(Includes Adaptive Cruise Control, Turbo, & Shutters)
Installation Instructions

Instruction Notes: The fascia and windshield washer fluid reservoir are removed and reinstalled for the baseplate installation. Some drilling and trimming is required.

Place all components that are removed on a flat, sturdy surface. All items will be reinstalled unless otherwise noted after the baseplate is installed.

The dimensional variations between otherwise identical vehicles can be considerable. While the baseplate was designed for easy installation, it may be necessary to tailor the baseplate slightly to compensate for vehicle manufacturer's tolerances.

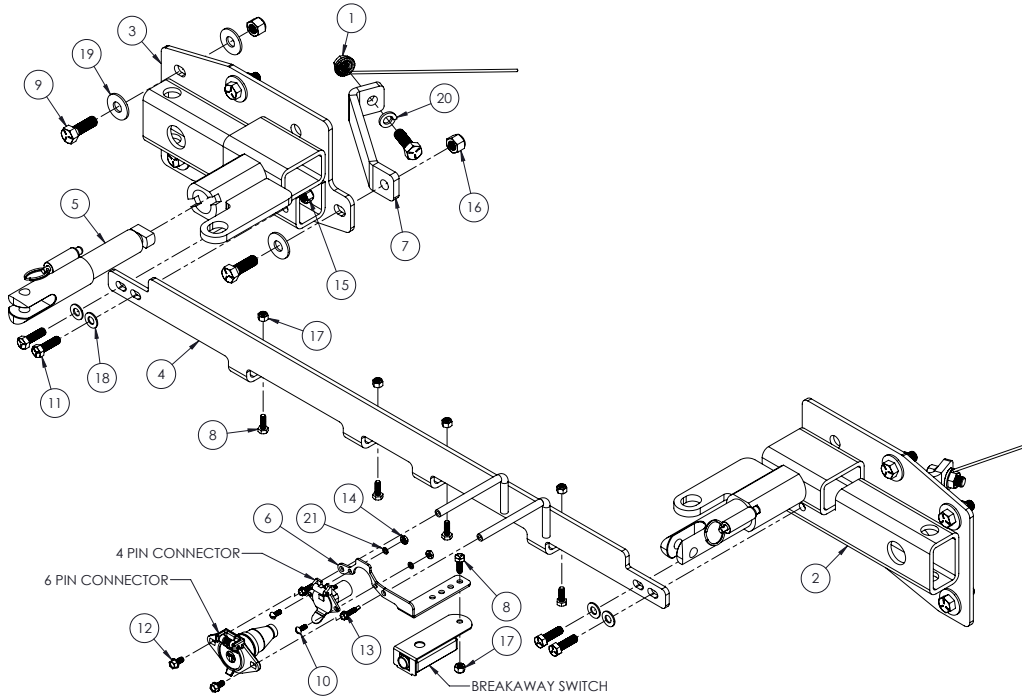
A light bar is recommended for this vehicle.

NOTICE

- Handling of some cosmetic parts when installing this product may require the use of protective covers, rags, specialty tools, etc. to prevent damage.
- When using power drills be aware of the dangers of torque and drill bit length.
- When using a reciprocating saw be aware of objects behind the cutting surface.
- Use a good quality paint to spray cut edges of frame to prevent rusting.
- Be sure that **ALL** electrical connections are plugged in and accessories are functioning properly before reinstalling the fascia.
- The baseplate is computer tested to your vehicle's GVWR, exceeding this weight will void the manufacturer's warranty.
- Be sure to use a sufficient amount of Loctite® Red on all bolt threads before tightening. Tighten all bolts according to the torque chart provided unless specified.
- Dealer or installer be certain the user receives these instruction sheets.
- If the baseplate is in an accident, it must be replaced. **DO NOT** use it again! An accident can cause unseen damage and using it again could result in more damage or serious injury. **DO NOT** use the baseplate if it is damaged or missing parts.

BX1149

2022 Jeep Grand Wagoneer (No Tow Hooks) (Includes Adaptive Cruise Control, Turbo, & Shuttters) Installation Instructions



Tools Required

Large Vise Grip
 Flat Screwdriver
 Utility Knife
 Phillips Screwdriver
 Torque Wrench
 Drill
 Tape Measure
 Loctite® RED
 3/8" Drill Bit
 10MM Socket
 9/16" Socket
 9/16" Wrench

Item No.	Part No.	Description	Qty.
1.....	61-4029	1/2"-13 Whiz Nut w/ Wire	2
2.....	61-8534	BX1149 Baseplate, DS	1
3.....	61-8535	BX1149 Baseplate, PS	1
4.....	61-8536	BX1149 Baseplate, Cross Member	1
5.....	62-3469	Attachment Tab Assembly with Hole	2
6.....	101-9381	Electrical Bracket w/ Breakaway Switch Mount.....	1
7.....	101-10754	Support Plate.....	2
8.....	201-0050	1/4"-20 x 3/4" Hex Head Bolt, Grade 5, ZP	5
9.....	201-0051	1/2"-13 x 1-1/2" Hex Head Bolt, Grade 5.....	12
10.....	201-0192	#10-32 1/2" Round Slotted Head Screw.....	2
11.....	201-0368	3/8"-16 x 1-1/4" Hex Head Bolt, Grade 5, ZP	4
12.....	201-0553	1/4"-20 x 1/2" Hex Washer Head Type F TCS, ZP	2
13.....	201-0979	#12-14 x 1" Self Drilling Screw, ZP.....	2
14.....	202-0047	#10-32 Hex Nut	2
15.....	202-0090	3/8"-16 Hex Nylon Insert Lock Nut, ZP.....	4
16.....	202-0094	1/2"-13 Hex Nylon Insert Lock Nut, ZP.....	10
17.....	202-0102	1/4"-20 Hex Nylon Nut, ZP	5
18.....	203-0003	3/8" Flat Washer, ZP.....	4
19.....	203-0005	1/2" Flat Washer	18
20.....	203-0012	1/2" Lock Washer, ZP	2
21.....	203-0054	#10 Lock Washer, ZP	2
22.....	226-0049(not shown)	Class IV Safety Cables.....	2
23.....	229-0512(not shown)	1/2" Quicklink, ZP	2
24.....	290-0437(not shown)	Black Cap Plug Receiver.....	2

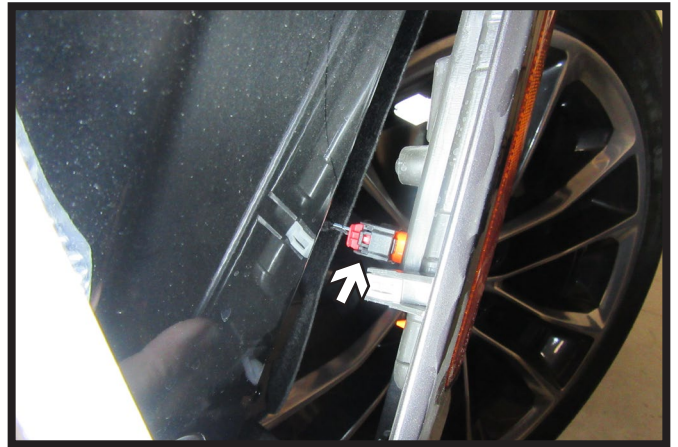
Important:

Use only genuine factory replacement parts on your baseplate. Do **NOT** substitute homemade or non-typical parts. If a bolt is lost or in need of replacement, for your safety and the preservation of your baseplate, be sure to use a replacement bolt of the same grade (In most cases it will be Grade 5, please reference the parts list above). Replacement parts may be ordered through your nearest Blue Ox® Dealer or Distributor. Failing to follow and/or altering these installation instructions in either installation or required equipment will void the manufacturer's warranty. Towing behind a non-motorized vehicle will void the warranty.

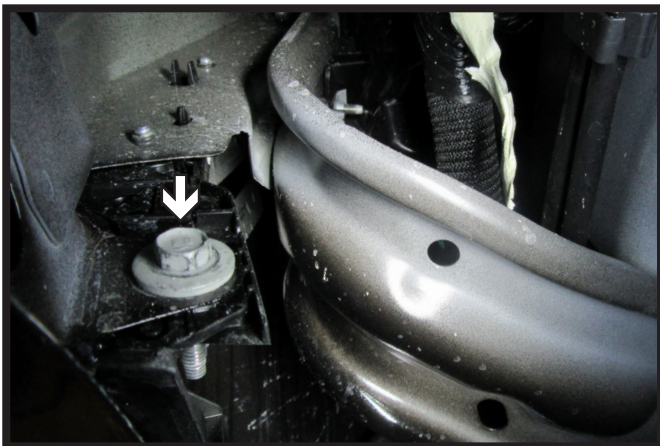
BX1149
2022 Jeep Grand Wagoneer (No Tow Hooks)
(Includes Adaptive Cruise Control, Turbo, & Shutters)
Installation Instructions



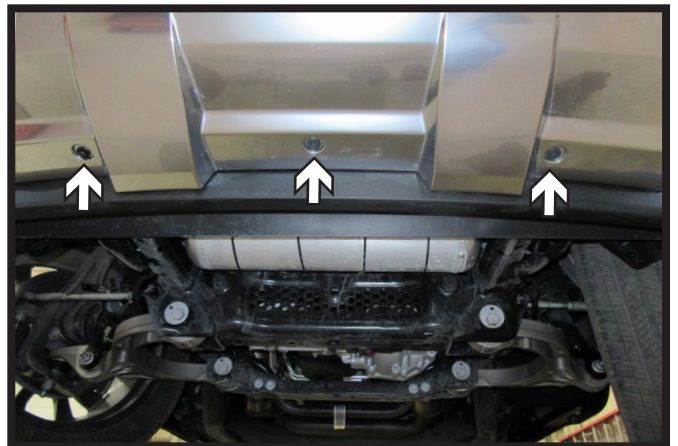
1. Using an 8MM socket, remove the four (4) bolts from the wheel well edge. Do this on both sides of the vehicle.



2. Unsnap the wheel well trim past the fascia joint. Unplug light as trim is pulled back. Place soft cloth between trim and vehicle to hold trim out of the way. Do this on both sides of the vehicle.

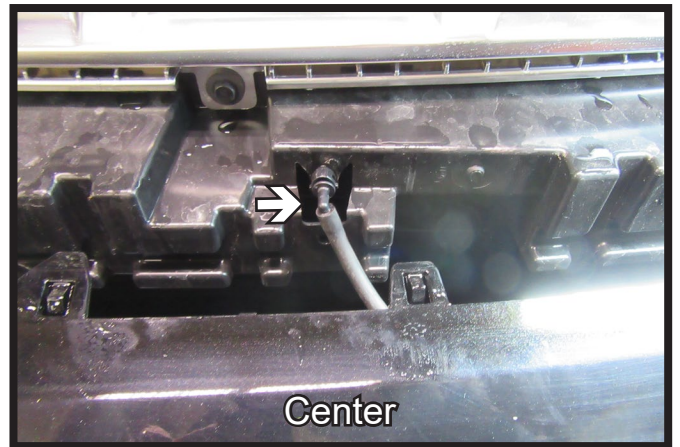
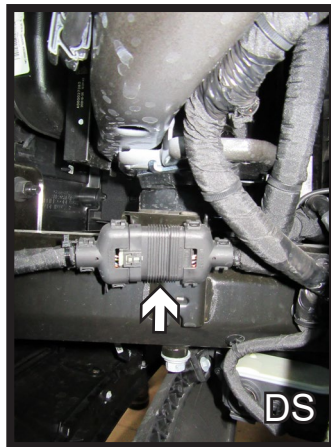


3. Pull back the wheel well liner. Using a 10MM socket, remove the one (1) bolt from the fascia joint. Do this on both sides of the vehicle.

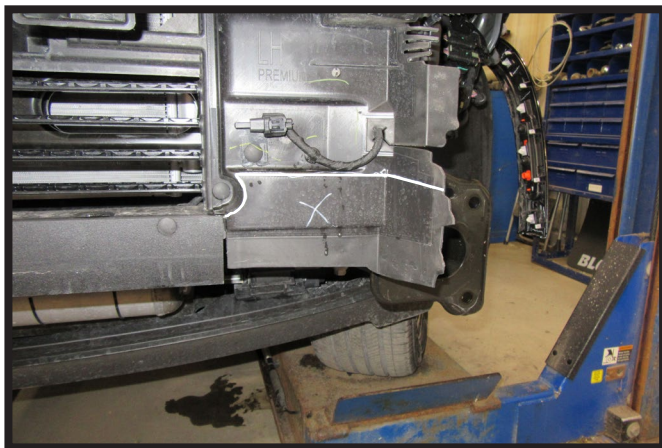


4. Using a 10MM socket, remove the three (3) bolts from the bottom of the fascia.

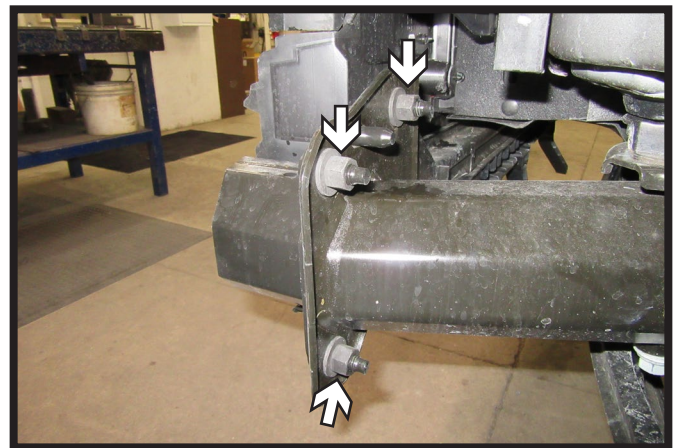
BX1149
2022 Jeep Grand Wagoneer (No Tow Hooks)
(Includes Adaptive Cruise Control, Turbo, & Shuttters)
Installation Instructions



5. Remove fascia and set aside to be reinstalled later. Unplug the electrical on both sides of the vehicle and hose in the center as the fascia is removed.

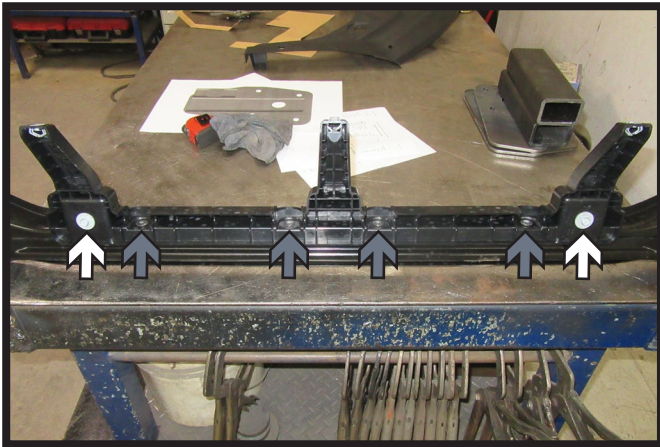


6. Using a utility knife, trim plastic shroud as shown on both sides of the vehicle and remove piece.

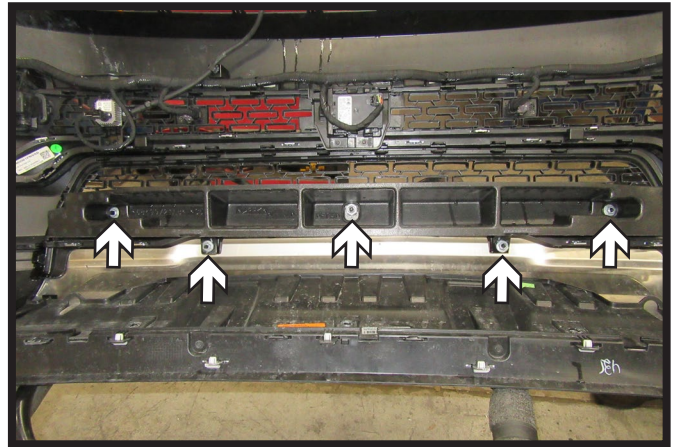


7. Using a 18MM socket or wrench, remove the three (3) nuts from the bumper. Do this on both sides of the vehicle. Remove bumper, it will not be reinstalled.

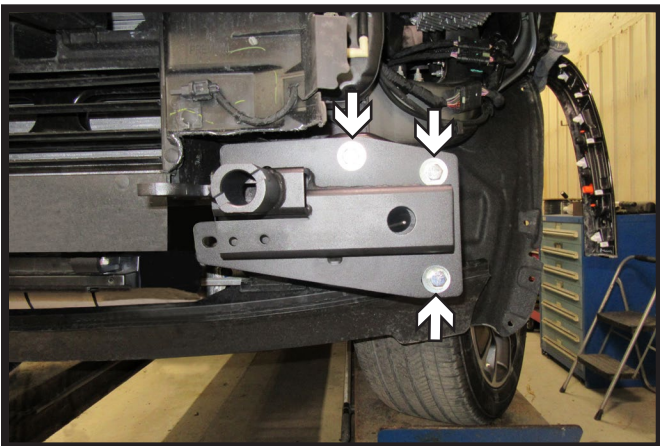
BX1149
2022 Jeep Grand Wagoneer (No Tow Hooks)
(Includes Adaptive Cruise Control, Turbo, & Shutters)
Installation Instructions



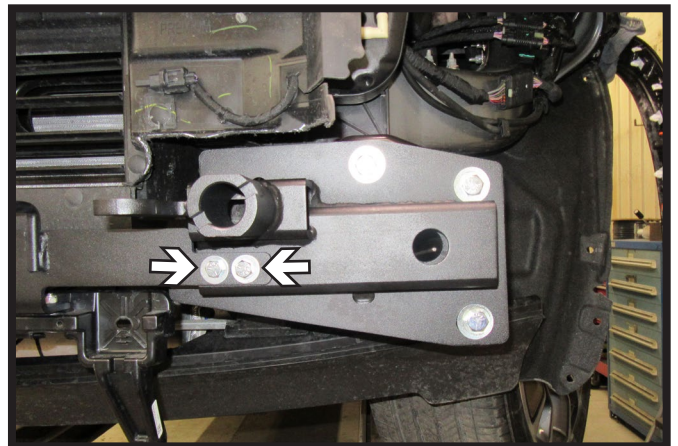
8. Using a 10MM socket, remove the two (2) bolts (white) from the plastic piece on the bottom of the bumper. Then using 1/4" drill bit, drill out the four (4) plastic rivets (gray). Remove plastic piece and set aside to be reinstalled with the baseplate.



9. Using a 13MM socket, remove the five (5) nuts on the backside of the fascia. Remove foam piece and set aside. It will not be reinstalled.



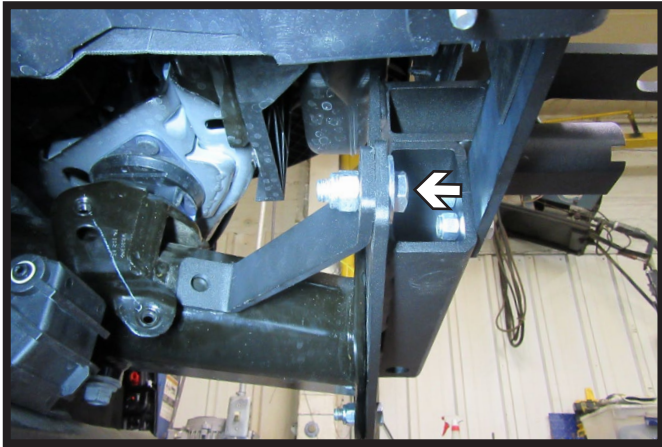
10. Hold baseplate in place and start the three (3) 1/2" x 1-1/2" bolts with flat washers and nylon lock nuts. Snug up the baseplate into place but leave loose. Do this on both sides of the vehicle.



11. Attach cross member to baseplates, start the two (2) 3/8" x 1" bolts with flat washers and nylon lock washers. Do this on both sides of the vehicle. Ensure baseplate is level and tighten baseplate on each side then cross member.

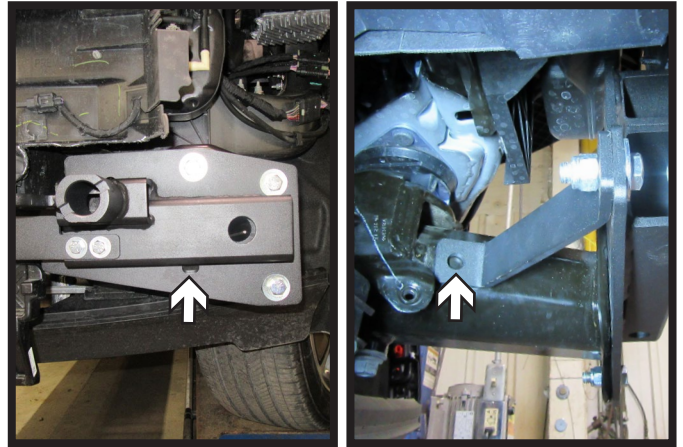
**** Use Loctite® Red on all bolt threads and tighten all bolts to the appropriate torque. ****

BX1149
2022 Jeep Grand Wagoneer (No Tow Hooks)
(Includes Adaptive Cruise Control, Turbo, & Shutters)
Installation Instructions

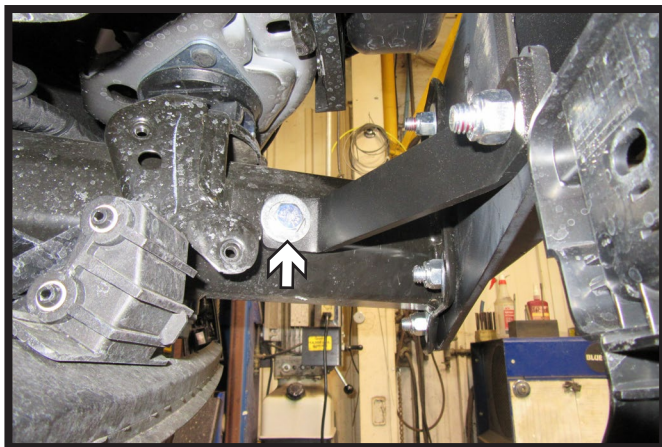


12. Attach support bracket to baseplate using one (1) 1/2" x 1-1/2" bolt with flat washer and nylon lock nut. Do this on both sides of the vehicle.

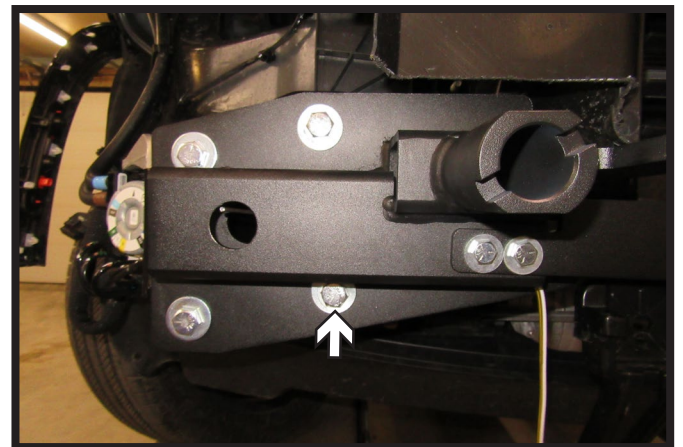
**** Use Loctite® Red on all bolt threads and tighten all bolts to the appropriate torque. ****



13. Using a 1/2" drill bit, drill the bottom inside hole on the front of the baseplate (left). Then using the support bracket as a template, drill 1/2" hole in frame (right). Do this on both sides of the vehicle.



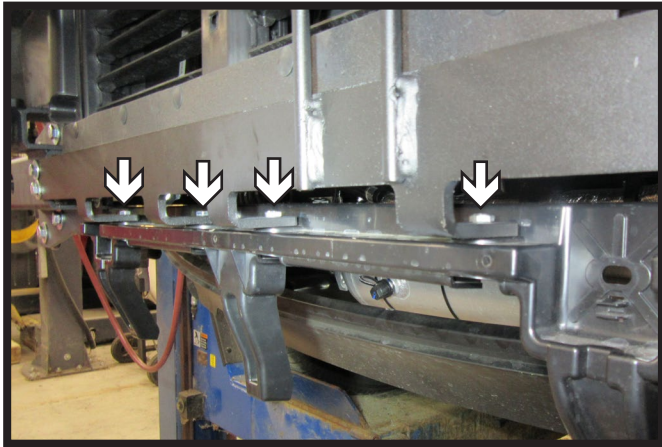
14. Install one (1) 1/2" bolt with lock washer and whiz nut. Do this on both sides of the vehicle.



15. Install one (1) 1/2" x 1-1/2" bolt with flat washer and nylon lock nuts into the bottom inside hole on the front of the baseplate. Do this on both sides of the vehicle.

**** Use Loctite® Red on all bolt threads and tighten all bolts to the appropriate torque. ****

BX1149
2022 Jeep Grand Wagoneer (No Tow Hooks)
(Includes Adaptive Cruise Control, Turbo, & Shutters)
Installation Instructions



16. Attach plastic piece from bumper to cross member using four (4) 1/4" x 1" bolts with flat washers and lock washers.
Note: Grooves on plastic piece should be facing forward.

**** Use Loctite® Red on all bolt threads and tighten all bolts to the appropriate torque. ****



17. Attach the permanent baseplate safety cables to the provided convenience link on the baseplate. The photo above shows the recommended installation of the cables to frame of vehicle. Additional options may interfere with suggested mounting; in this case, secure the cables to a solid piece of the frame as described in the General Information sheet. Be sure the safety cables do not rub against any hoses or moving parts. Do this on **BOTH** sides of the vehicle.



18. Hold the fascia as close to its original position, mark and trim the fascia around the convenience links and attachment tabs. Reinstall the fascia and reconnect all electrical and hose.

General Information

1. It is crucial to register your product(s) so that you may be alerted of product offerings, updates, upgrades, maintenance and safety bulletins, and/or recalls.
2. **It is the owner's responsibility to inspect all towing equipment for cracked welds, missing or worn parts and loose bolts before each towing trip.** Be sure to use Loctite® Red on all bolts and tighten to the recommended specifications.
3. **It is the owner's responsibility to hook up all towing equipment per manufacturer's instructions/ recommendations.**
4. Remove the attachment tabs when not in use (if applicable).

Notice To Baseplate Installer

1. It is YOUR responsibility to watch for:

- Oil cooler and air conditioner lines
- Electrical wires and hoses
- Missing parts or attaching points on the frame

** If the baseplate is improperly installed and is against a wire or hose, it could cause fluid leaks or electrical shorts some time after the actual baseplate installation.

Permanent Baseplate Safety Cable Installation

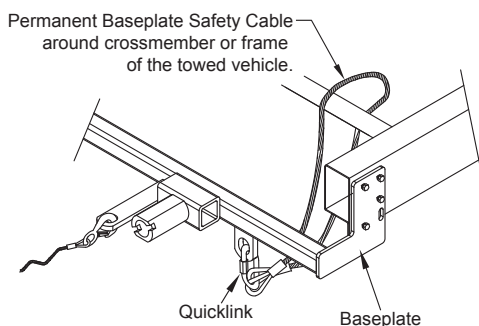
Permanent baseplate safety cables are strongly recommended when towing a vehicle with a tow bar. The principle function of the permanent baseplate safety cables is to prevent the towed vehicle from breaking loose in the event the connection between the frame of the towed vehicle and the baseplate fails or becomes disconnected. The cables must be connected from the baseplate to the frame rail or cross member of the vehicle's frame. The illustrations below show the possible arrangements recommended by Blue Ox®. Each permanent baseplate safety cable must have an adequate weight rating for the towing system. The weight rating of the two (2) cables together will not qualify.

Do not mount the permanent baseplate safety cables against wires, hoses or brake lines.

These permanent baseplate safety cables should remain installed as long as the baseplate is installed on the vehicle. Permanent baseplate safety cables are to be used in conjunction with, and NOT a replacement for legally required safety cables attaching the towed vehicle to the towing vehicle.

Option #1

(Baseplates with Convenience Link Tabs)



Option #2

(Baseplates with out Convenience Link Tabs)



Discover other trailer hitches and towing on our website.