



## For Ford Fender Flares

Suit For 11-16 Ford F-250/350  
Fender Flares

### FEATURE

High quality injection molding fender flares

Made from light weight impact resistance Polypropylene,  
non-cracking, non-warping, 100% UV-resistant.

Professional installation is always recommended

### Step 1 Before Installation

**A.Fit:** Fit of the flare to vehicle should be confirmed. Some filing, sanding, or cutting may be adopted for proper fit if necessary.

**B.Painting:** (optional) if paint is desired it must be done prior of installing flares on vehicle. Clean outer surface with a good grade degreaser.

**C.Metal protection:** Rust resistance paint of all exposed fasteners and bare metal should be done BEFORE installing flares. Undercoating the inner fender wells should be done AFTER flare attachments have been completed.

**D.Flares** may interfere with existing decals on vehicle. If you wish. Remove decals prior to installation of flares.

### TOOLS FOR EASY INSTALLATION

- Utility Knife
- #2 Phillips Driver
- Socket Wrench
- 7/32"Socket
- 3/8"Socket
- 5/32"Allen Wrench

## Hardware Kit:



1. SW1-0067,  
5/16 x 18 x 3/8"  
SS Torx Screw,  
38 pcs



2. WA1-0012,  
.320 x .700 x .03  
SS Washer,  
38 pcs



3. NU1-0019,  
5/16-18 Jam Fin.  
Nylock Nut,  
38 pcs



4. SW1-0052,  
T-45 Torx Bit,  
1 pc



5. SW1-0050,  
10 x 5/16 Phillips  
Truss Screw,  
8 pcs



6. CL1-0005,  
Dacromet "U"  
Spring Clip,  
8 pcs



7. MT1-0014,  
1" x 1.5" x .01"  
Black Tab,  
12 pcs



8. SW1-0038,  
1/4-20 x 1-1/2"  
SS Bttnhd Screw,  
4 pcs



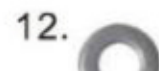
9. SP1-0008,  
1/2" x .260" x 3/4"  
Spacer,  
4 pcs



10. WA1-0017,  
1/4 x 1-1/4" Black  
Fender Washer  
4 pcs



11. NU1-0015,  
1/4-20 SS  
Nylock Nut,  
4 pcs



12. WA1-0010,  
.327 x .625 x .31  
SS Washer,  
4 pcs



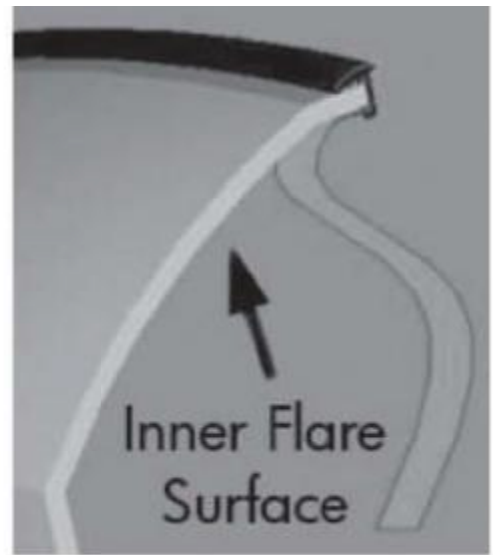
13. ET1-0002,  
Edge Trim Tool,  
1 pc



14. GP1-0005,  
Large Wiper Style  
Edge Trim,  
200 inches

Applying the adhesive side of the edge trim to the inner side of the flare, affix the edge trim to the top edge of the flare (the portion that comes in contact with the vehicle).

B. Press edge trim into place along the top edge of the flare in one-foot increments, pulling red vinyl backing free as you continue to work your way around the top edge of the flare.



## Pocket Hardware Installation:



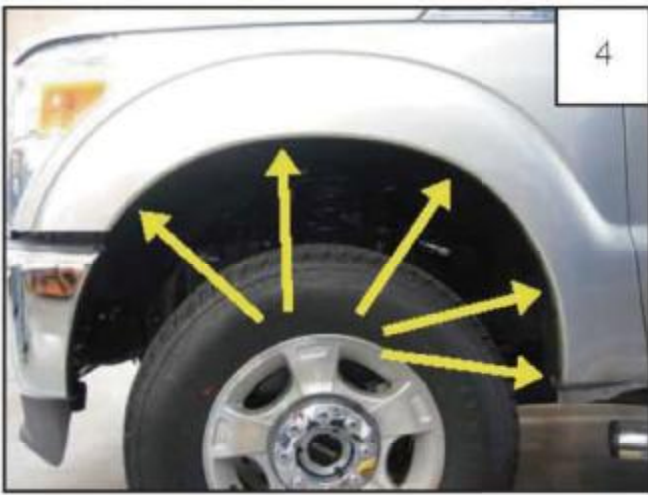
Put a Washer (WA 1-0012) on each Bolt (SW1-0059).



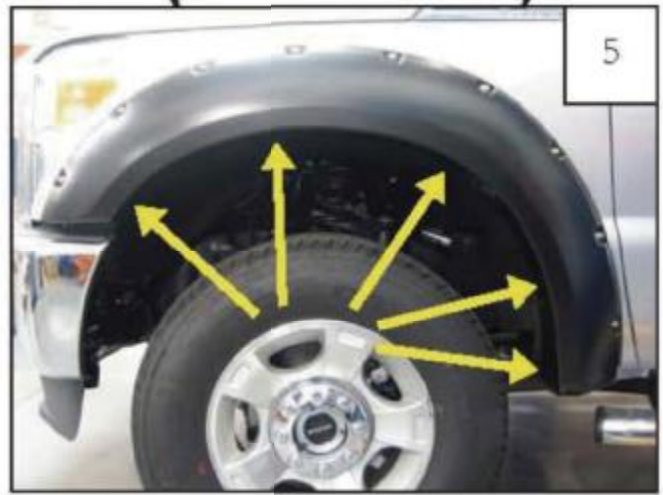
Put each Bolt/Washer combination through a pocket hole in the flare, Bolt head and Washer on the outside.



Place a Nut (NU1-0019) over the end of each Bolt and tighten, using a 1/2" wrench for the Nut and the supplied Torx Bit (SW1-0052) for the Bolt. Repeat for remaining pockets.



Using a 7/32" socket wrench to undo five factory screws and keep these screws for installing again.

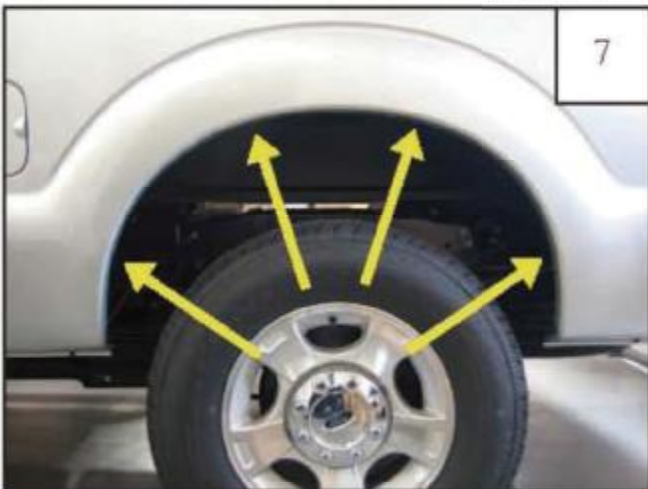


Keep flare on the position of fender, array factory holes and holes in the flare, and then using a 7/32" socket wrench to fit up factory screws through holes in flare and fender, starting with the top, centermost screw.

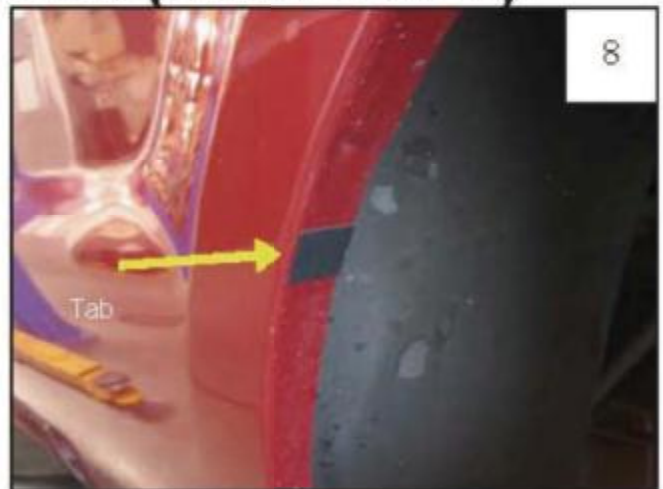


Fitting up of front flare is finished.

## Rear Flare Installation Procedures (Driver's Side):

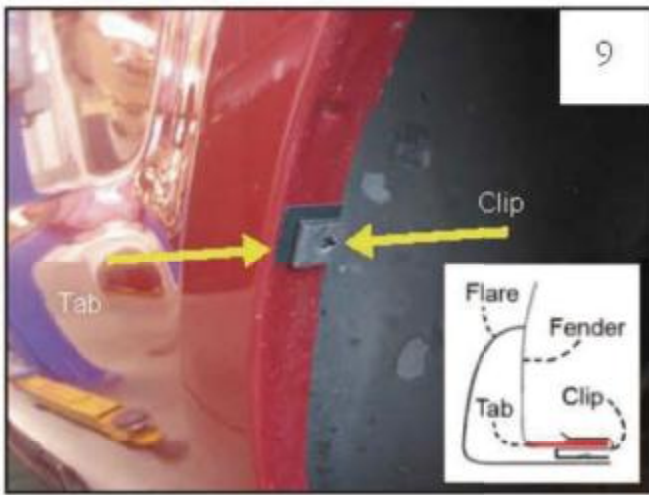


Keep flare to vehicle and ascertain the four holes in flares is lined up with four factory holes in the fender.



Fit a Tab (MT1-0014) circled over each of the four holes mentioned in Step 7, and enfolded around the metal lip.





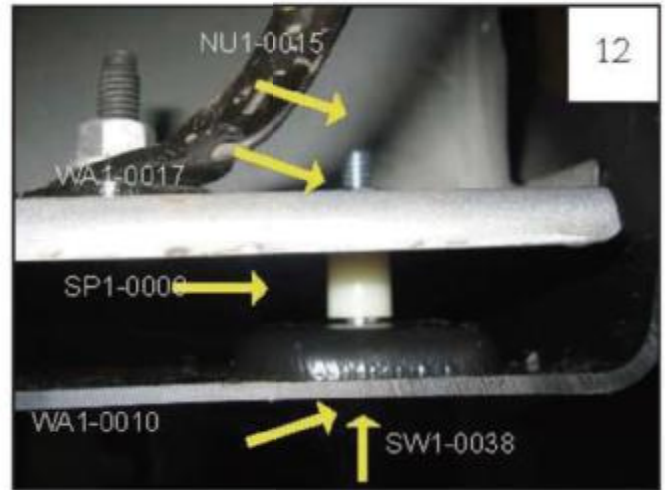
Fit up a Clip (CL1-0005) above each of the Tab (MT1-0014) done in Step 8.



Keep flare on the position of fender, use a #2 Phillips screwdriver to install Screws (SWE1-0050) acrossing holes in flare and into clips, starting with the two top holes.



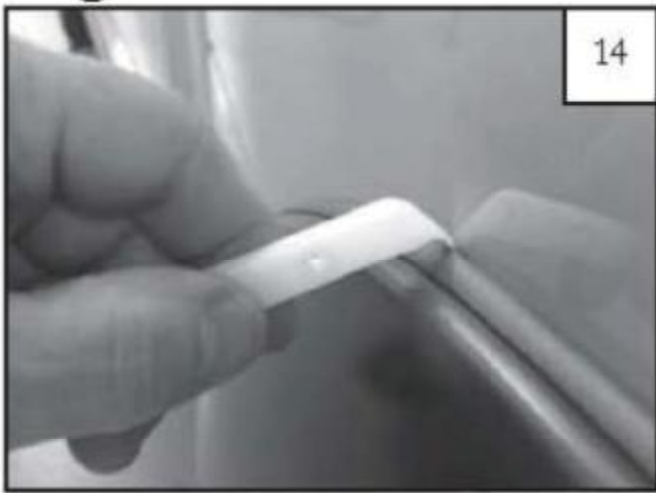
Fit up bolt, Washer (WA1-0010), Spacer (SP1-0008), Washer (WA1-0017) and Nut (NU1-0015) acrossing bottom two holes in flare and into factory holes with a 5/32' Allen Wrench and 3/8' socket.



Actuate Screw from the bottom through the Washer and into flare, and fit up Spacer between flare and sheet metal, and then slide a Washer and then a Nut over the end of the Screw.



Fitting up of rear flare is finished.



Place the edge trim against vehicle by hooking curved end beneath edge trim at one end of flare and then slide the outer edge of flare to the other end with the provided Edge Trim Tool (ET1-0002).



Place the edge trim against flare by by inserting straight end between edge trim and flare at one end and then slide around entire edge to the other end with the provided Edge Trim Tool (ET1-0002).