



INSTALLATION INSTRUCTIONS

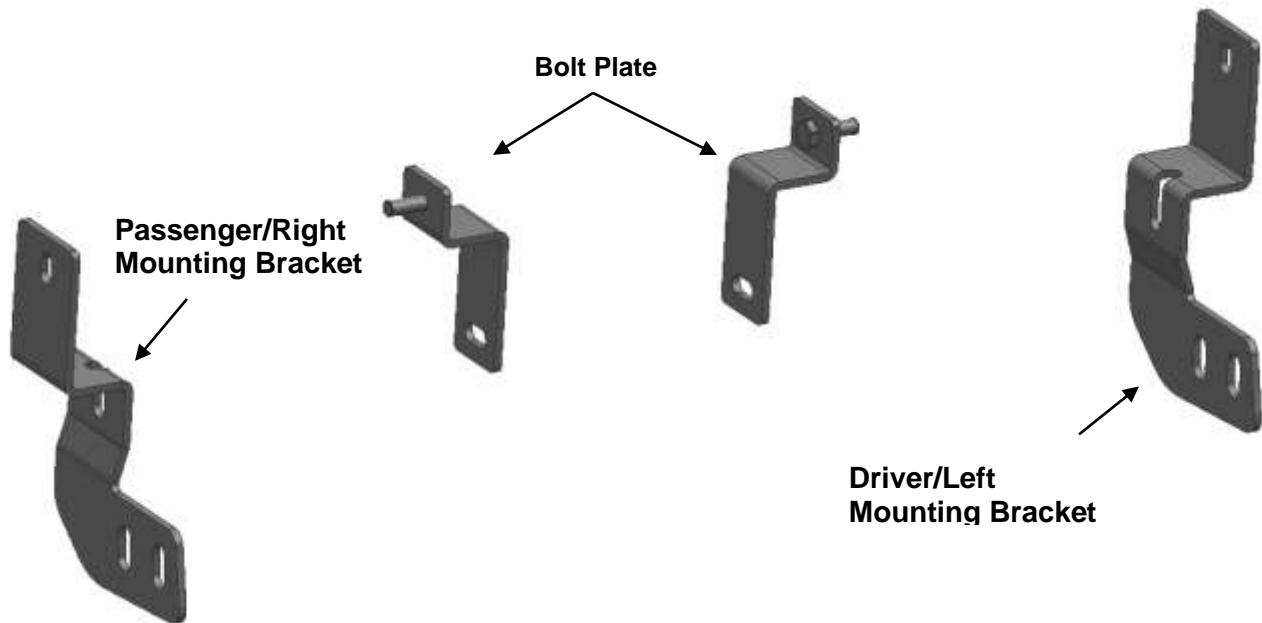
STAINLESS BULL BAR With/ Skid Plate

**FOR
TOYOTA RAV4 2019-2021**

PART # CBS-TOB4802SP

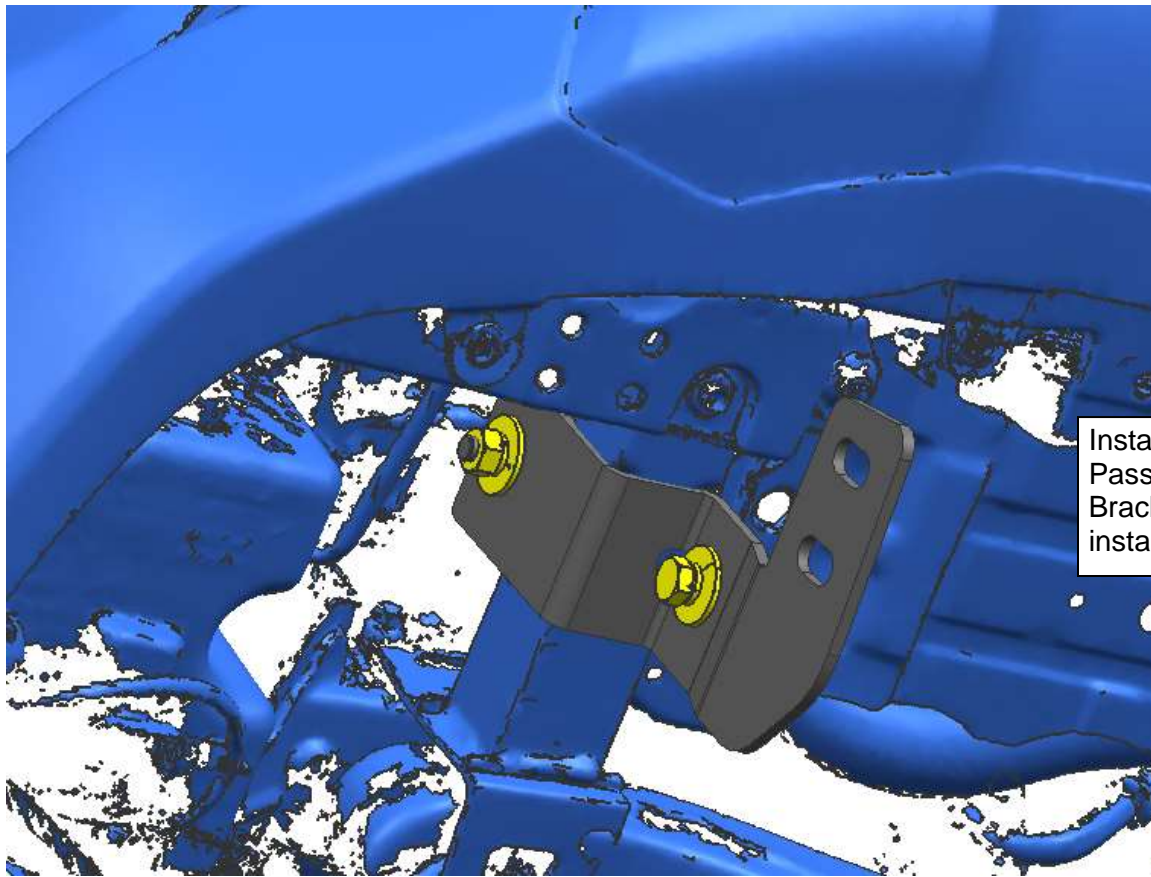
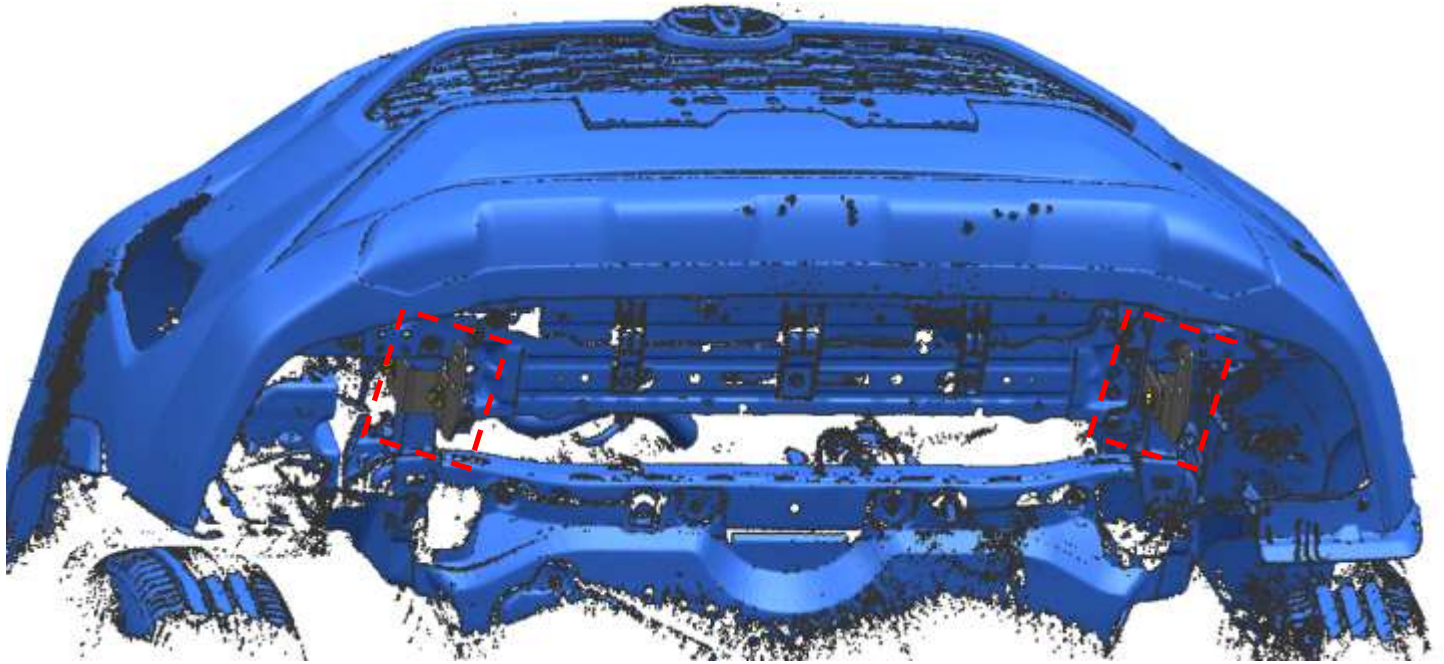
PARTS LIST:

1	Driver/Left Mounting Bracket	8	Flat Washer D12 (12X37X3mm)
1	Passenger/Right Mounting Bracket	4	Hex Nut M10
2	Bolt Plate M10X30	4	Hex Nut M12
4	Lock Washer D10	2	Hex Bolt M10_35
4	Lock Washer D12	4	Hex Bolt M12_40
6	Flat Washer D10 (10×30×2.5mm)		

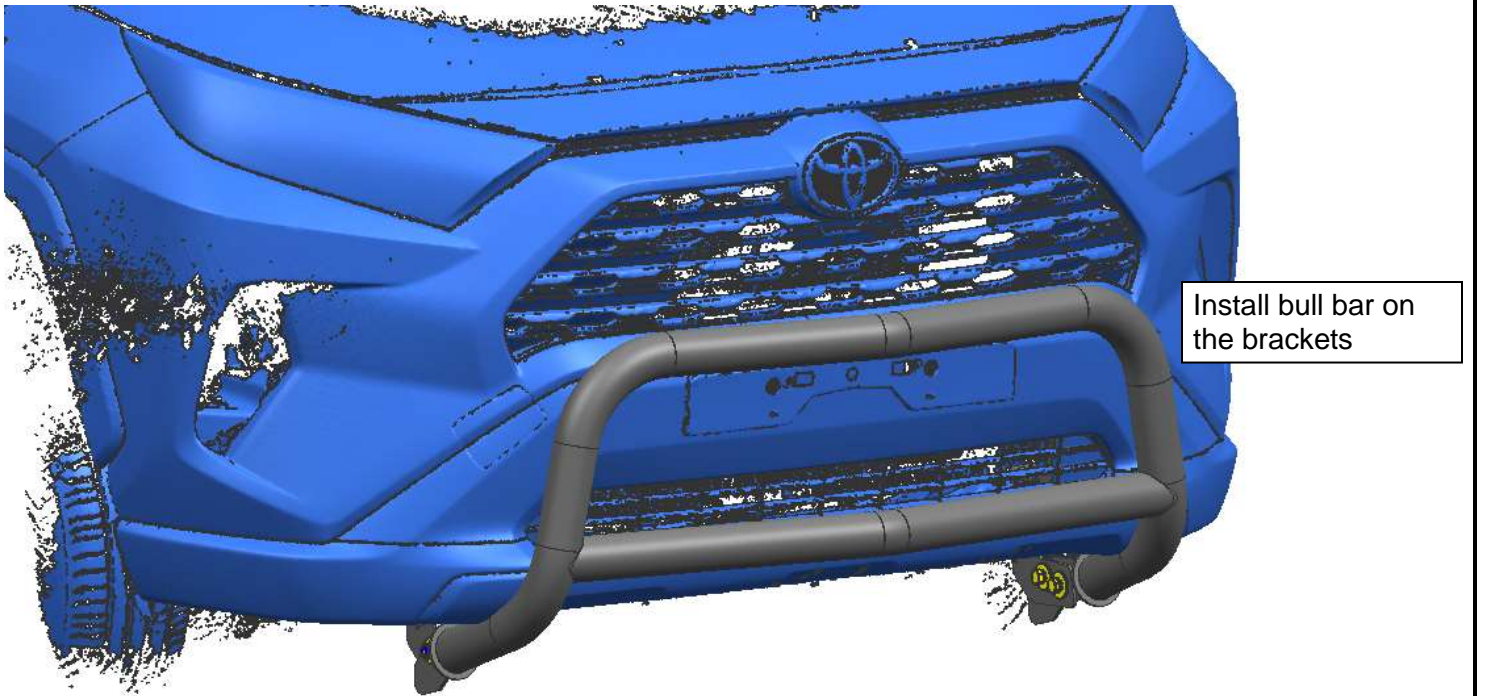
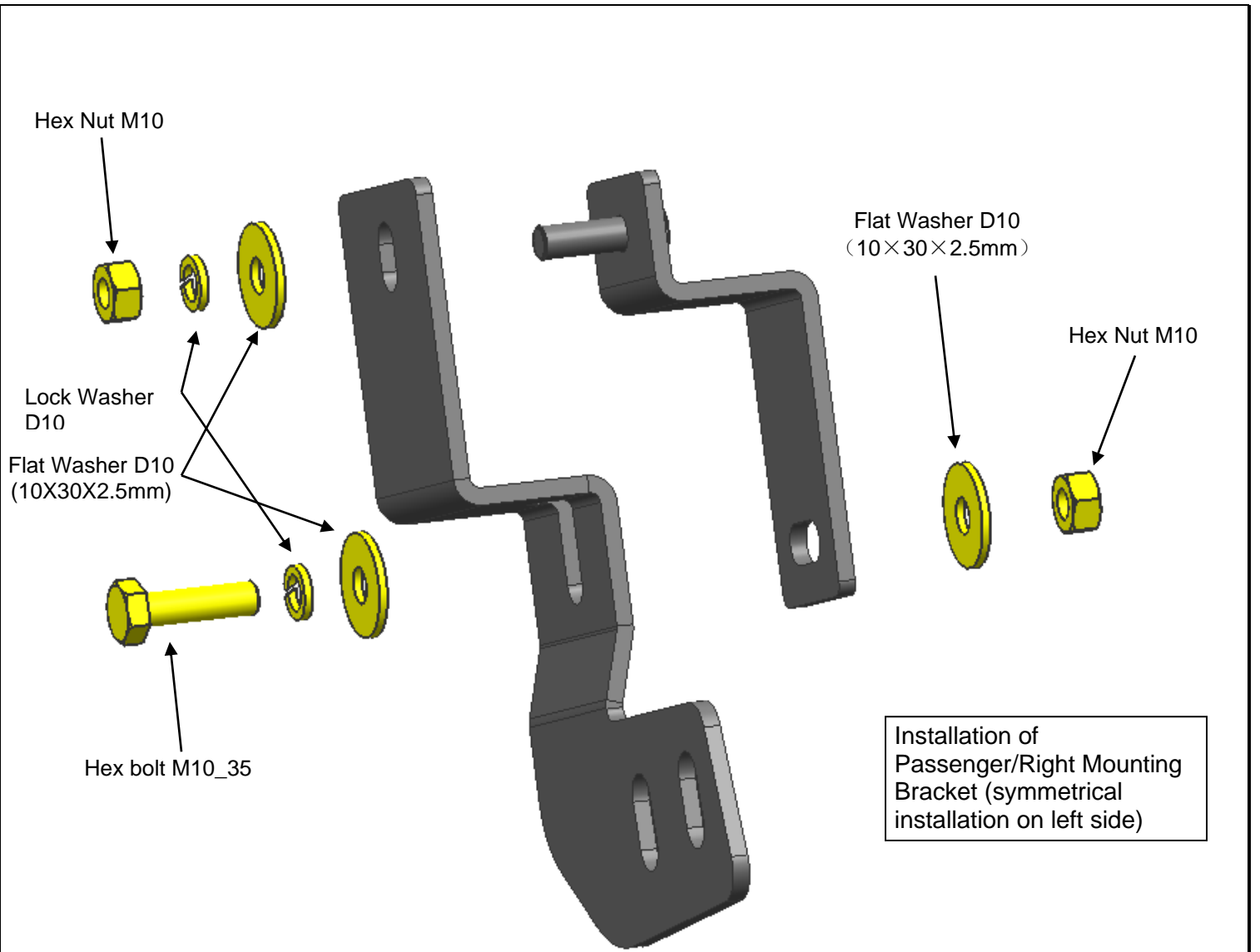


PROCEDURE:

- 1. REMOVE CONTENTS FROM BOX. VERIFY ALL PARTS ARE PRESENT. READ INSTRUCTIONS CAREFULLY BEFORE STARTING INSTALLATION. CUTTING IS REQUIRED. ASSISTANCE IS RECOMMENDED.**
2. Use standard parts Lock Washer D10, Flat Washer D10, Hex Nut M10 and Hex Bolt M10_35 to fix mounting brackets and bolt plates on girder.
3. Use standard parts Lock Washer D12, Flat Washer D12 (12X37X3mm), Hex Nut M12 and Hex Bolt M12_40 to install bull bar on step 2 brackets.

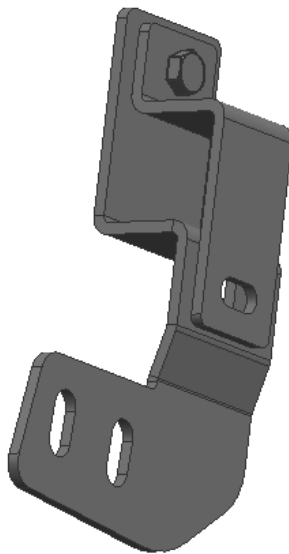
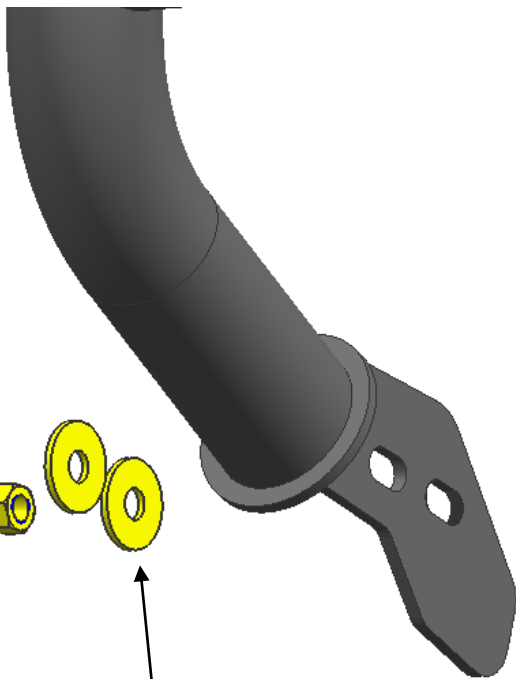


Installation of
Passenger/Right Mounting
Bracket (symmetrical
installation on left side)

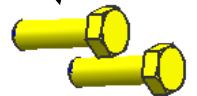




Install on the right side, pay attention to symmetrical installation

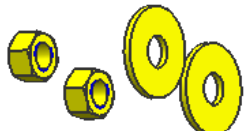


Hex Bolt M12_40



Flat Washer D12
(12X37X3mm)

Lock Washer D12



Hex Nut M12

Flat Washer D12
(12X37X3mm)