



INSTALLATION INSTRUCTIONS

A BAR W/O SKID PLATE FOR TOYOTA RAV4 06-18

PART # CBS-TOB4401

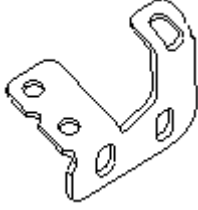
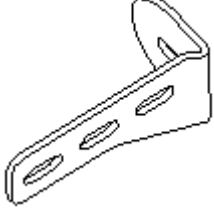

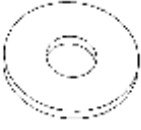

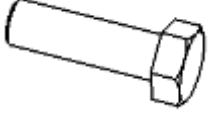
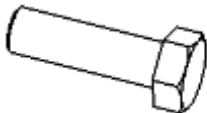
Before Installation

- Please read the instruction completely for easy installation, which will also help you to avoid scratches or other potential damages to your appealing car.
- The figures here are for reference only and may have differences with the actual product you received, however they share the same assembly way.

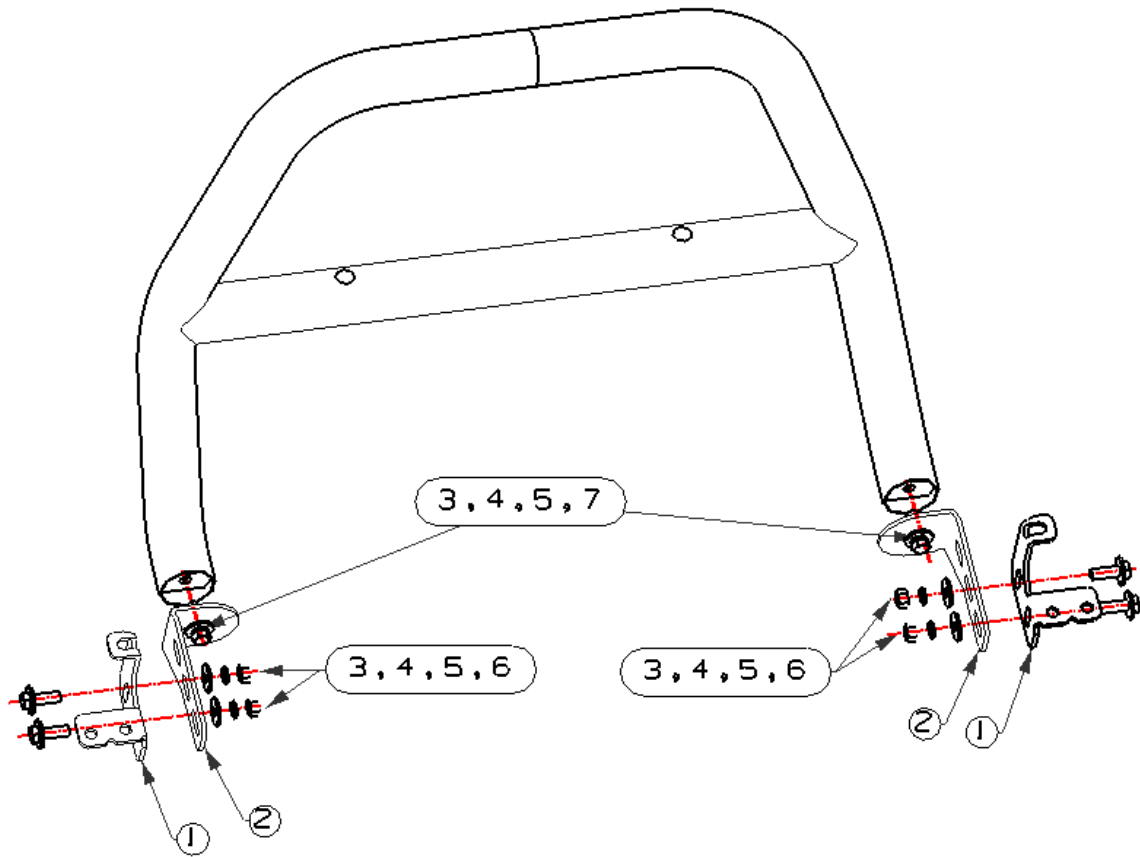
Care and Cleaning

- Mild soap may be used also to clean the Product.
- Please periodically check and retighten all the hardware and clean the investment for a refresh look.

Parts list

| NO. | QTY | PICTURE | NO. | QTY | PICTURE |
|-----|-----|--|-----|-----|---|
| ① | 2 |  Bracket 1 (L/R) | ② | 2 |  Bracket 2 (L/R) |
| ③ | 4 |  Hex Nut M12 | ④ | 10 |  Flat Washer D12_32_3 |
| ⑤ | 6 |  Spring Washer D12 | ⑥ | 4 |  Hex Bolt D12_35 |
| ⑦ | 2 |  Hex Bolt D12_40 | | | |

Installation Figure



Installation Steps

STEP1: Verify all parts are present.

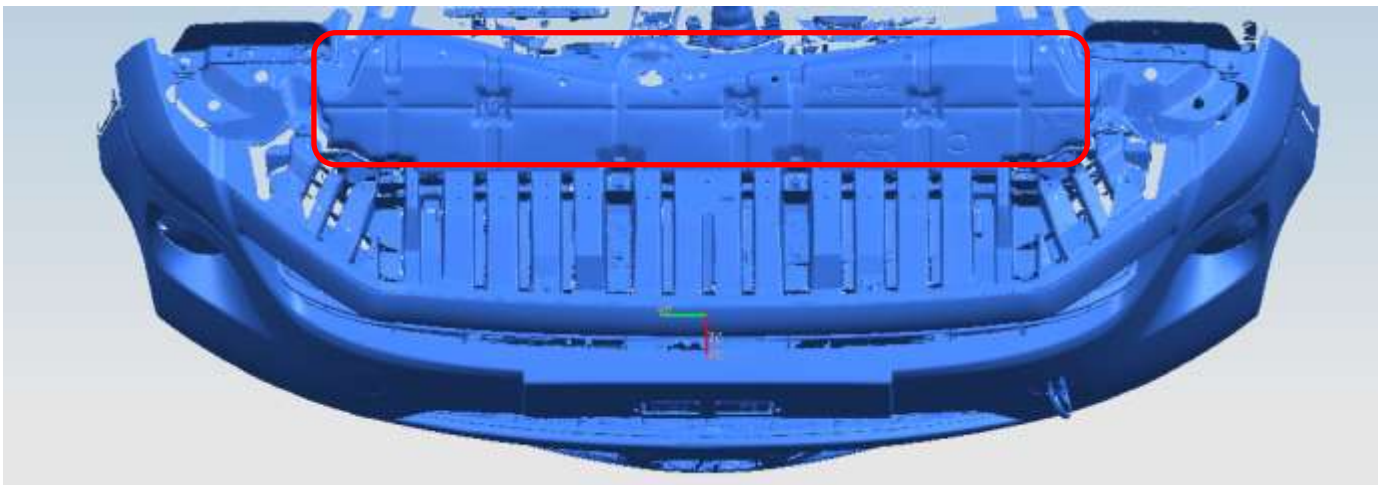
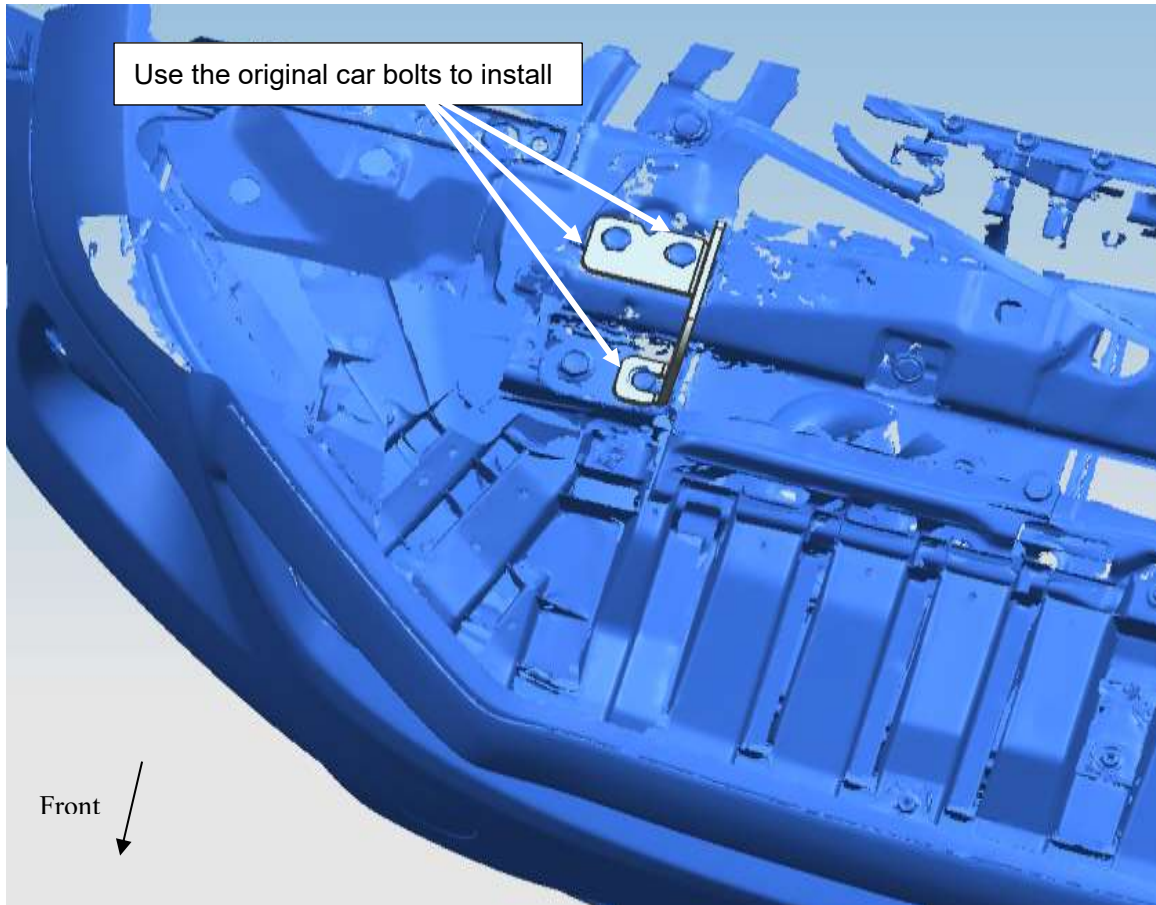
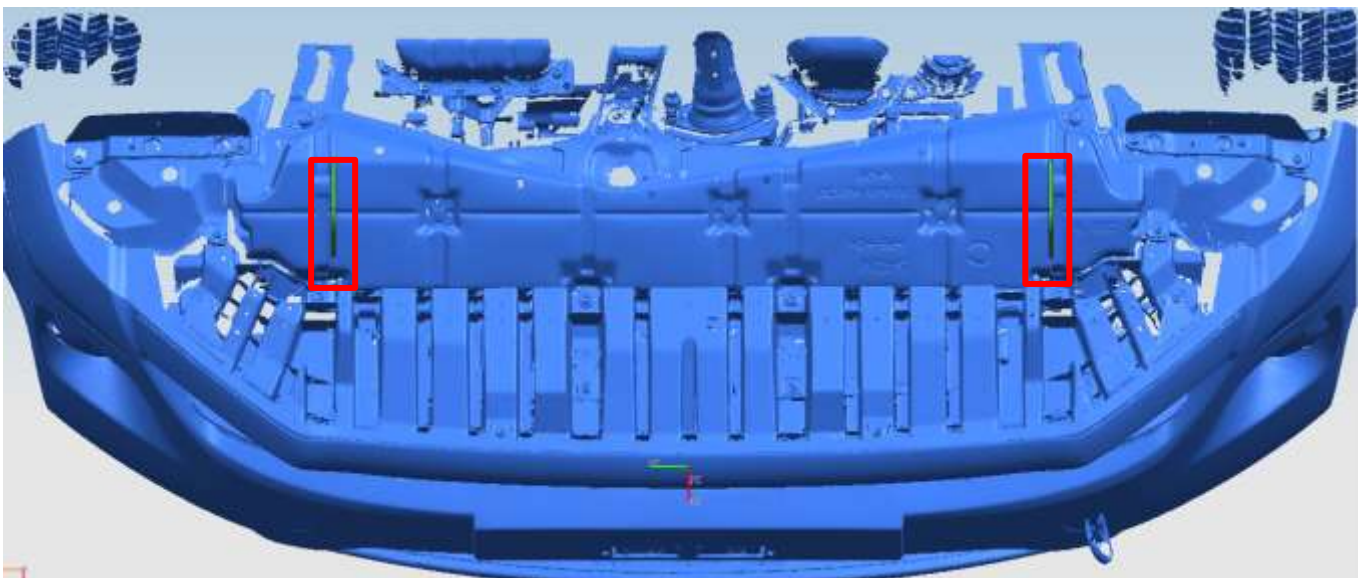


Fig (1)

STEP2: Remove the skid plate as Fig 1 shows.



STEP3: Check the mounting holes under the vehicle. Then use original bolts to install the L/R brackets on the vehicle.



STEP4: After the brackets are installed, reinstall the skid plate. At this time, the brackets will be interfered the skid plate. It is necessary to draw the hole positions on the skid plate that can probably pass through the brackets. Then cut off the excess plastic along the drawn side line and put the skid plate back smoothly.



STEP5: Adjust the bull bar to the proper position. Then lock all the standard parts on the L/R brackets. Complete installation.

NOTE

Any damages and losses caused by improper installation and application, goes beyond our quality warranty.