



INSTALLATION INSTRUCTIONS

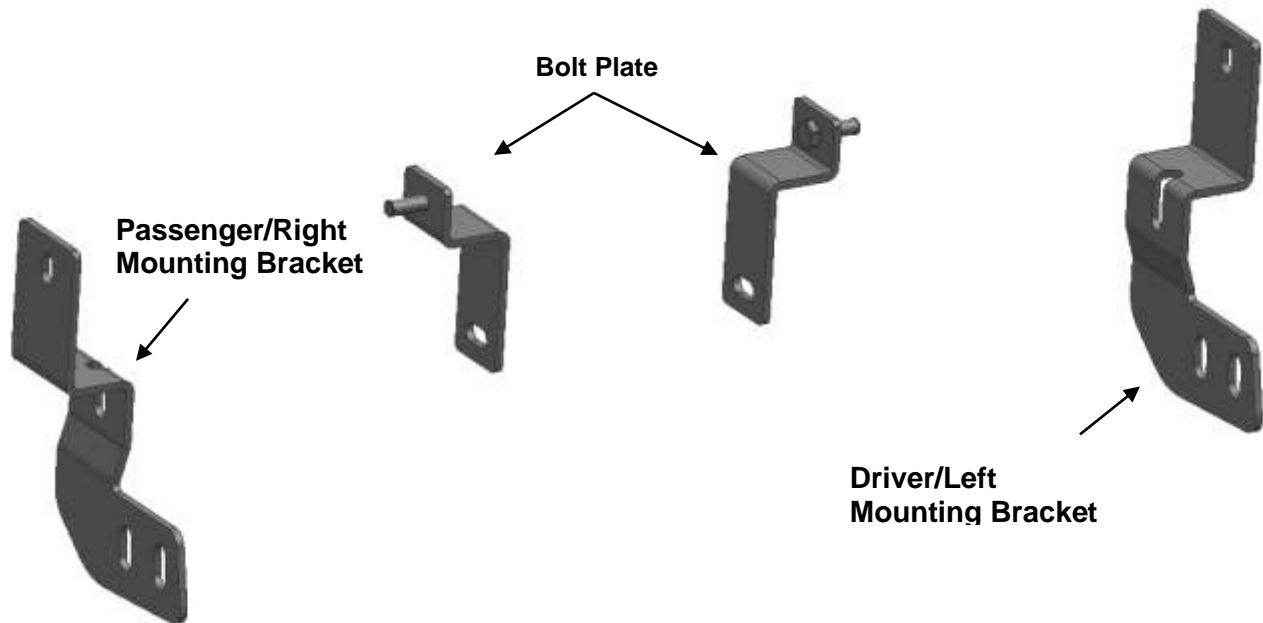
BLACK BULL BAR With/ Skid Plate

**FOR
TOYOTA RAV4 2019-2021**

PART # CBB-TOB4802SP

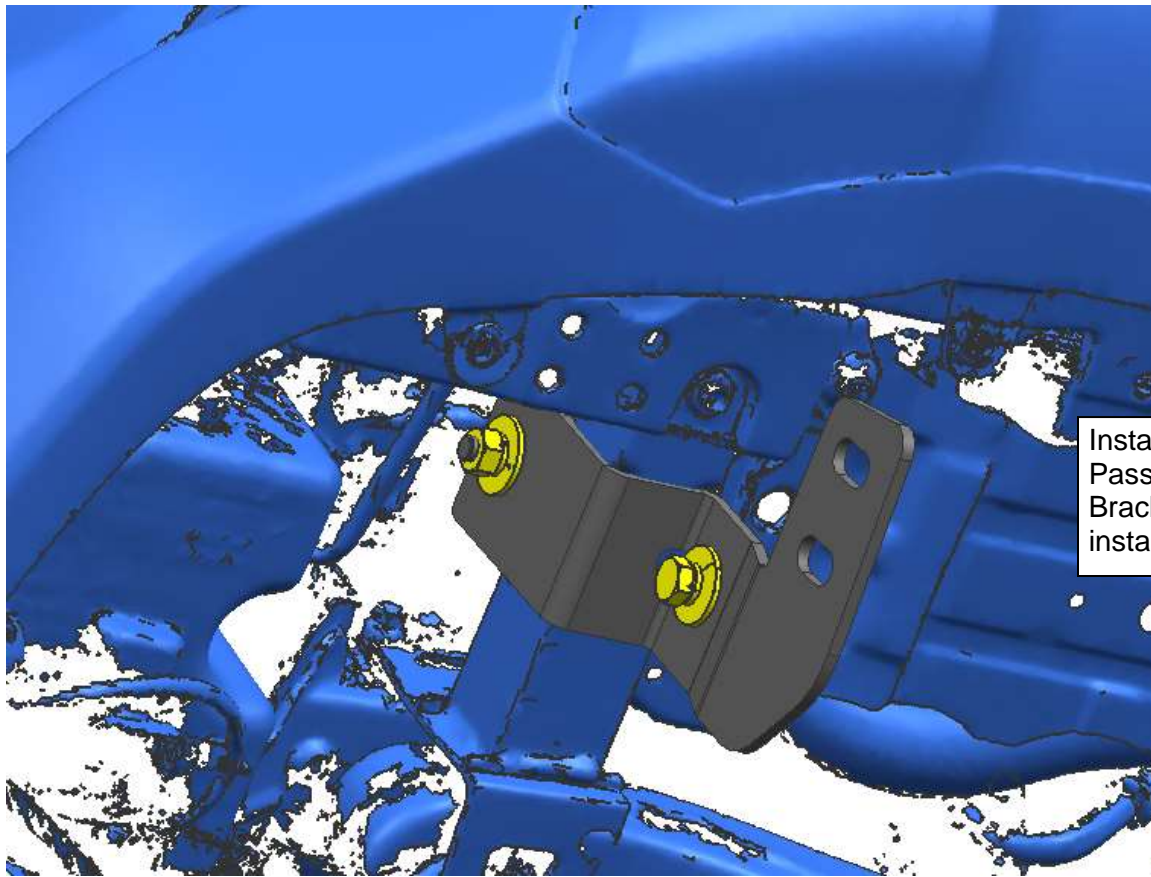
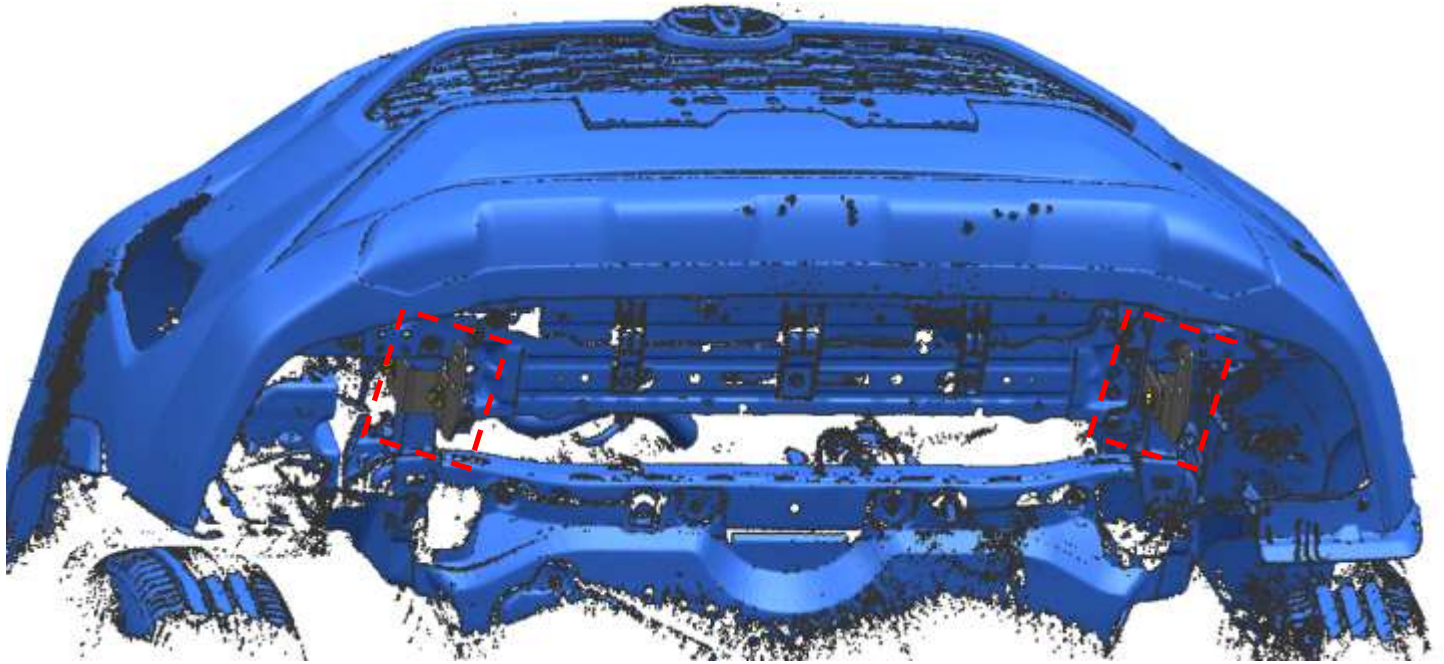
PARTS LIST:

| | | | |
|---|----------------------------------|---|-----------------------------|
| 1 | Driver/Left Mounting Bracket | 8 | Flat Washer D12 (12X37X3mm) |
| 1 | Passenger/Right Mounting Bracket | 4 | Hex Nut M10 |
| 2 | Bolt Plate M10X30 | 4 | Hex Nut M12 |
| 4 | Lock Washer D10 | 2 | Hex Bolt M10_35 |
| 4 | Lock Washer D12 | 4 | Hex Bolt M12_40 |
| 6 | Flat Washer D10 (10×30×2.5mm) | | |

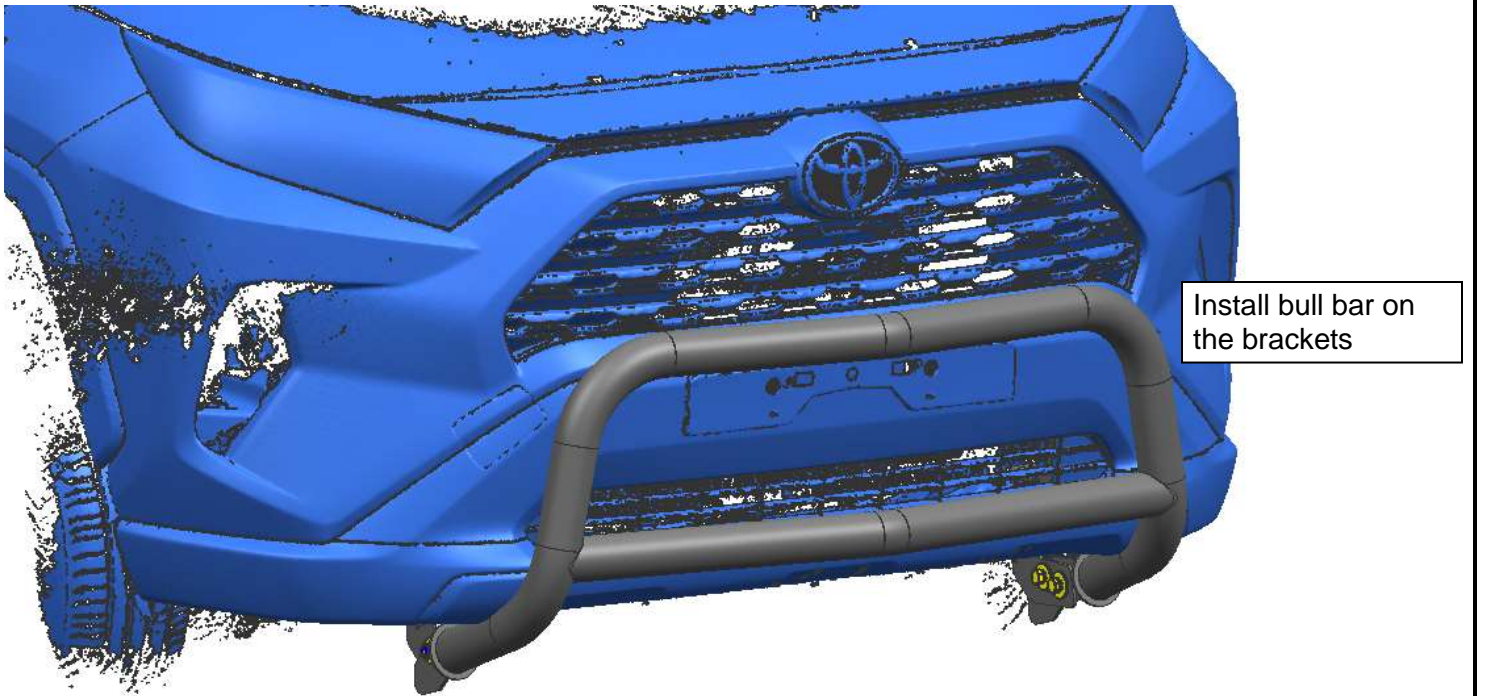
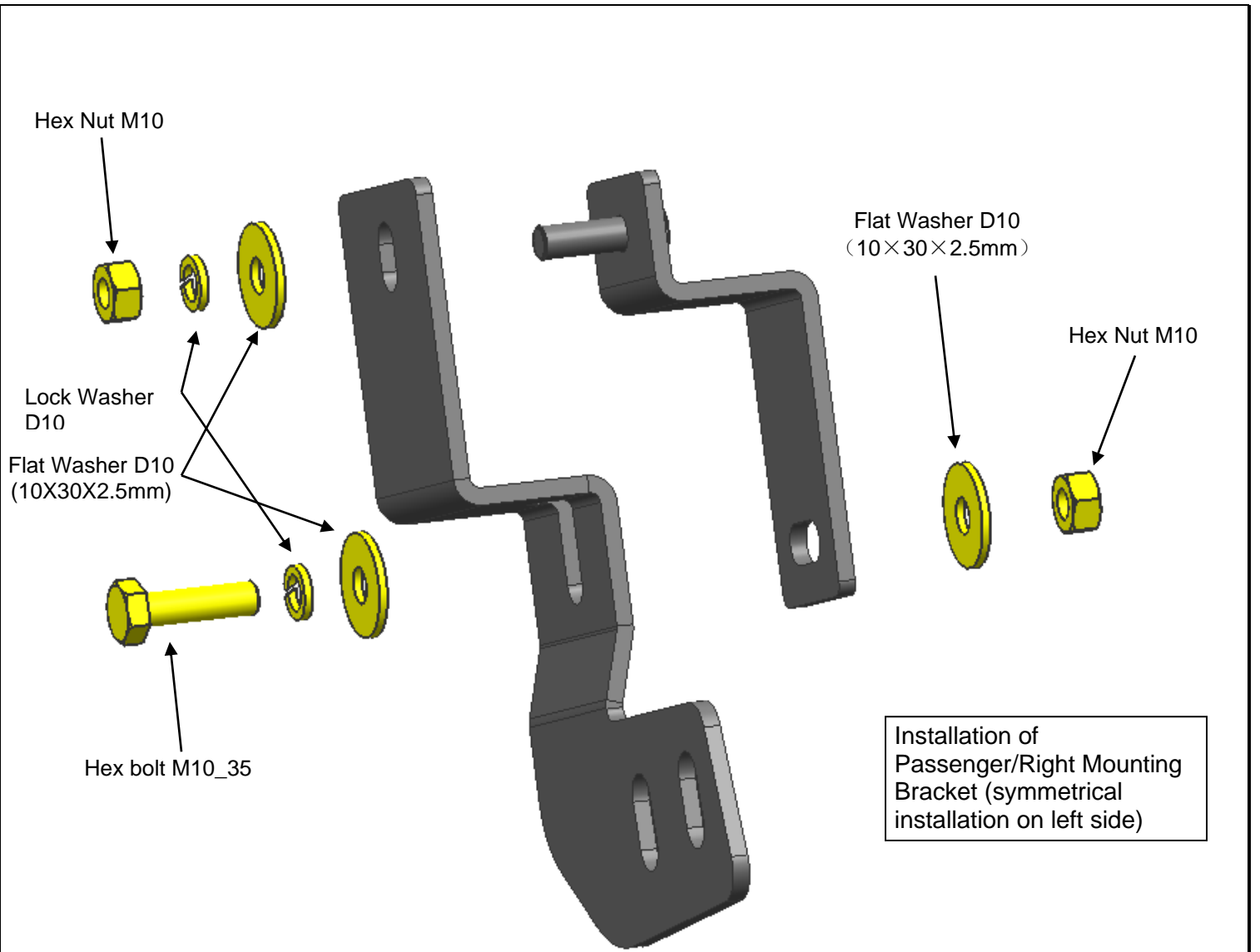


PROCEDURE:

- 1. REMOVE CONTENTS FROM BOX. VERIFY ALL PARTS ARE PRESENT. READ INSTRUCTIONS CAREFULLY BEFORE STARTING INSTALLATION. CUTTING IS REQUIRED. ASSISTANCE IS RECOMMENDED.**
- Use standard parts Lock Washer D10, Flat Washer D10, Hex Nut M10 and Hex Bolt M10_35 to fix mounting brackets and bolt plates on girder.
- Use standard parts Lock Washer D12, Flat Washer D12 (12X37X3mm), Hex Nut M12 and Hex Bolt M12_40 to install bull bar on step 2 brackets.

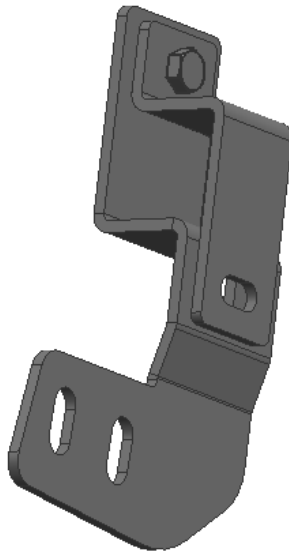
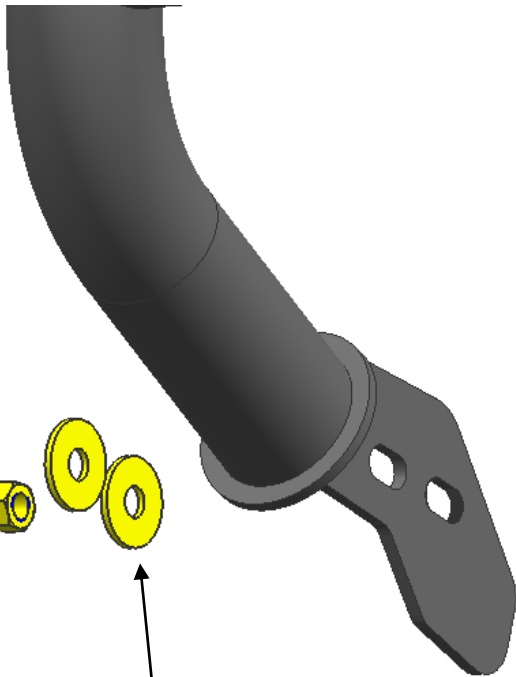


Installation of Passenger/Right Mounting Bracket (symmetrical installation on left side)

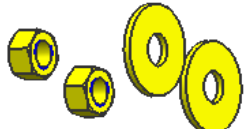




Install on the right side, pay attention to symmetrical installation



Hex Bolt M12_40

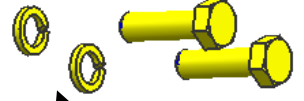


Hex Nut M12

Flat Washer D12
(12X37X3mm)



Flat Washer D12
(12X37X3mm)



Lock Washer D12