

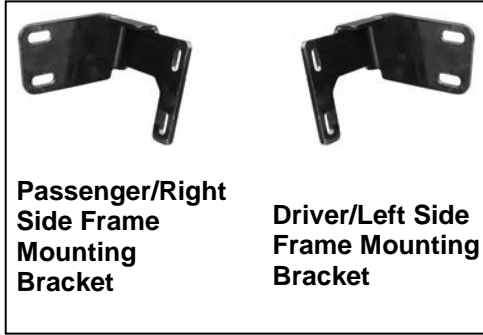


TEL: 1-866-XANATOS

INSTALLATION INSTRUCTION
PART # BBDG110-SP/BBDG110A-SP
BULL BAR WITH SKID PLATE FOR DODGE RAM 2500 10-12

PARTS LIST:

Qty	Description	Qty	Description
1	Bull Bar	16	10mm x 27mm OD x 3mm Flat Washers
1	Driver/Left Frame Mounting Bracket	8	10mm Lock Washers
1	Passenger/Right Frame Mounting Bracket	8	10-1.5mm Hex Nuts
8	10-1.5mm x 35mm Hex Bolts		



PROCEDURE:

- 1. REMOVE CONTENTS FROM BOX. VERIFY ALL PARTS ARE PRESENT. READ INSTRUCTIONS CAREFULLY BEFORE STARTING INSTALLATION. TOW HOOKS CANNOT BE REINSTALLED WITH THIS BULL BAR. NOTE:** It may be necessary to remove/relocate front license plate and license plate bracket. It is not required, but strongly recommended. If local/state law requires a visible front license plate, a license plate relocation kit is available.
- Starting at the front of the vehicle, determine if the truck is equipped with or without factory tow hooks, **(Figure 1)**.

For models without tow hooks:

Select the driver side Frame Bracket. Bolt the Bracket to the (2) outer holes in the frame with the included (2) 10mm x 35mm Hex Bolts, (4) 10mm Flat Washers, (2) 10mm Lock Washers and (2) 10mm Hex Nuts, **(Figure 2 & 3)**. Snug the hardware but do not tighten at this time.

Repeat this step for passenger side Frame Mounting Bracket installation

For models with tow hooks:

Remove the (4) hex bolts holding the tow hook to the frame, **(Figure 1)**. Remove the tow hook. **TIP:** Removing the inner hex bolts securing each tow hook can be difficult to reach from behind the bumper, (long socket extensions required). It may be easier to access the (2) hex bolts by going through the front of the bumper opening and holding the hex nuts in place with an open-ended wrench, **(Figure 2)**.

Select the driver side Frame Mounting Bracket and bolt it to the (2) outer holes for the tow hook with the factory hardware or the included (2) 10mm x 35mm Hex Bolts, (4) 10mm Flat Washers, (2) 10mm Lock Washers and (2) 10mm Hex Nuts, **(Figure 2 & 3)**. Snug the hardware but do not tighten at this time. Repeat this step for passenger side Frame Mounting Bracket installation.

- With help, position the Bull Bar up to the outside of the Mounting Brackets. Use the included (4) 10-1.5mm x 35mm Hex Bolts, (4) 10mm Lock Washers, (8) 10mm Flat Washers and (4) 10-1.5mm Hex Nuts to attach the Bull Bar to the Mounting Brackets, **(Figure 4)**. Snug but do not tighten hardware.

BULL BAR WITH SKID PLATE FOR DODGE RAM 2500 10-12

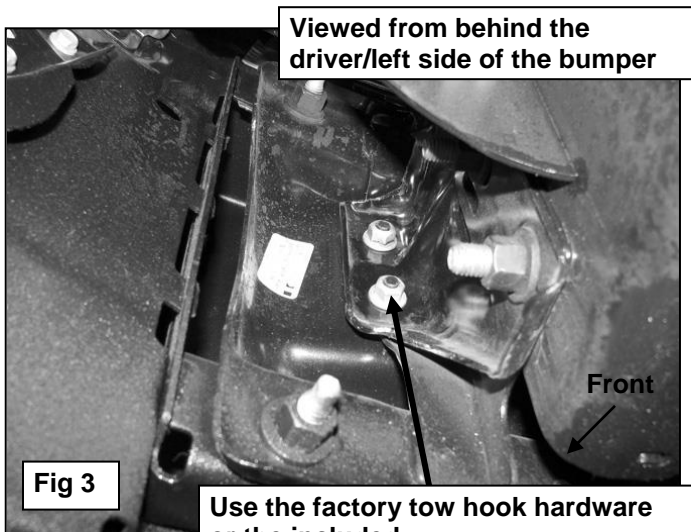
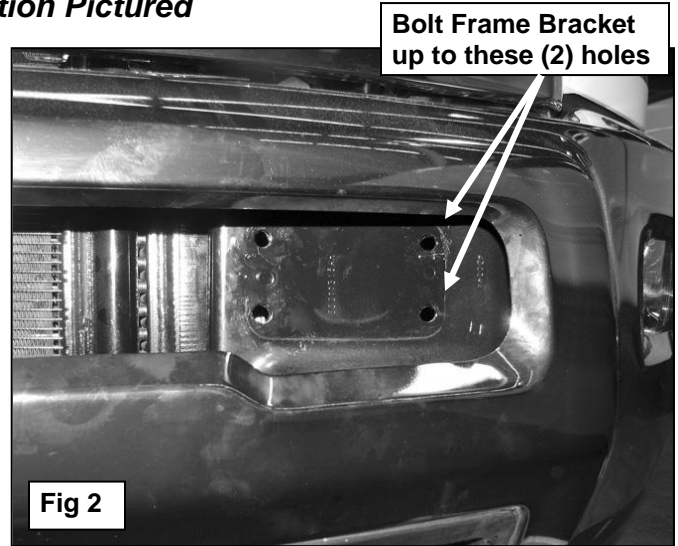
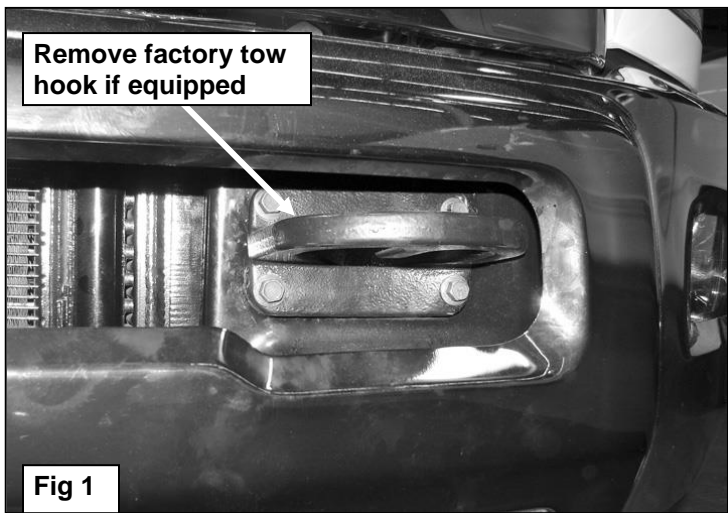
4. Stand back from the vehicle and check to see that the Bull Bar is centered and level on the vehicle and adjust as necessary. Once properly adjusted, tighten all hardware.
5. Do periodic inspections to the installation to make sure that all hardware is secure and tight.

To protect your investment, wax this product after installing. Regular waxing is recommended to add a protective layer over the finish. Do not use any type of polish or wax that may contain abrasives that could damage the finish.

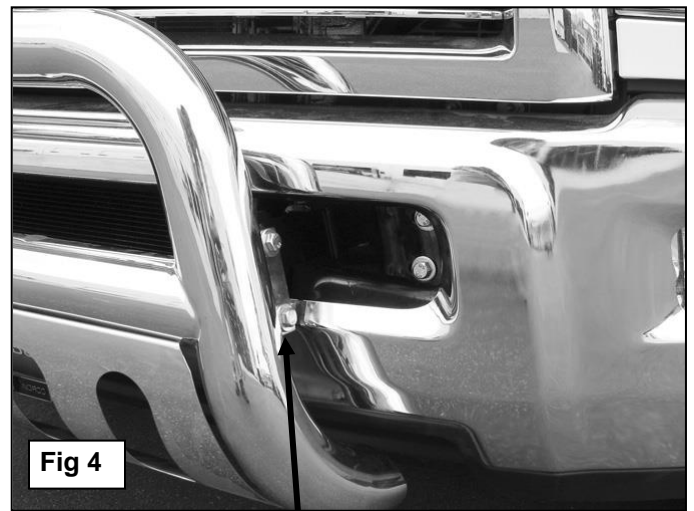
For stainless steel: Aluminum polish may be used to polish small scratches and scuffs on the finish. Mild soap may be used also to clean the Bull Bar.

For gloss black finishes: Mild soap may be used to clean the Bull Bar

Driver Side Installation Pictured



Use the factory tow hook hardware or the included:
(2) 10mm x 35mm Hex Bolts
(4) 10mm Flat Washers
(2) 10mm Lock Washers
(2) 10mm Hex Nuts



(2) 10mm x 35mm Hex Bolts
(4) 10mm Flat Washers
(2) 10mm Lock Washers
(2) 10mm Hex Nuts