

INSTALLATION INSTRUCTION

**Aluminum Running Board
07-12 Mercedes GL450(X164)
PART # RMWGL**



**BLACK HORSE
OFF ROAD**

A、 Note:

- 1、 Instructions in all the pictures for reference only.
- 2、 Please check all the accessories and car connection to ensure safe use.

B、 Installation steps:

Step 1: Refer to the part list and installation drawings check if all accessories are included.

Step 2: Pull down two side shirts. Refer to figure 1.

Step 3: Install the carriage match the original hole as figure 2. (Two sides with the same way.)

Step 4: Use special nut and snap joint to make the carriage more stable. Refer to figure3.

Step 5: Put the running board on the carriage directly. Refer to figure 4, (two sides with the same way.)

Step 6: Use Special Nut to make the side step more stable and fitting perfectly with the car. Put the fixture block to the running board.

Step 7: Check the side step whether it is tighten all the bolts.

Step 8: Open the passenger side door, and find the wire to connect the light of the running board. Note: The wire usually was placed near the door sill under the foot pad.

Step 9: Complete the installation.

Figure 1

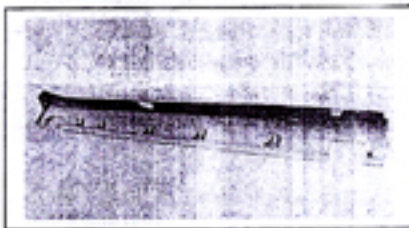


Figure 2

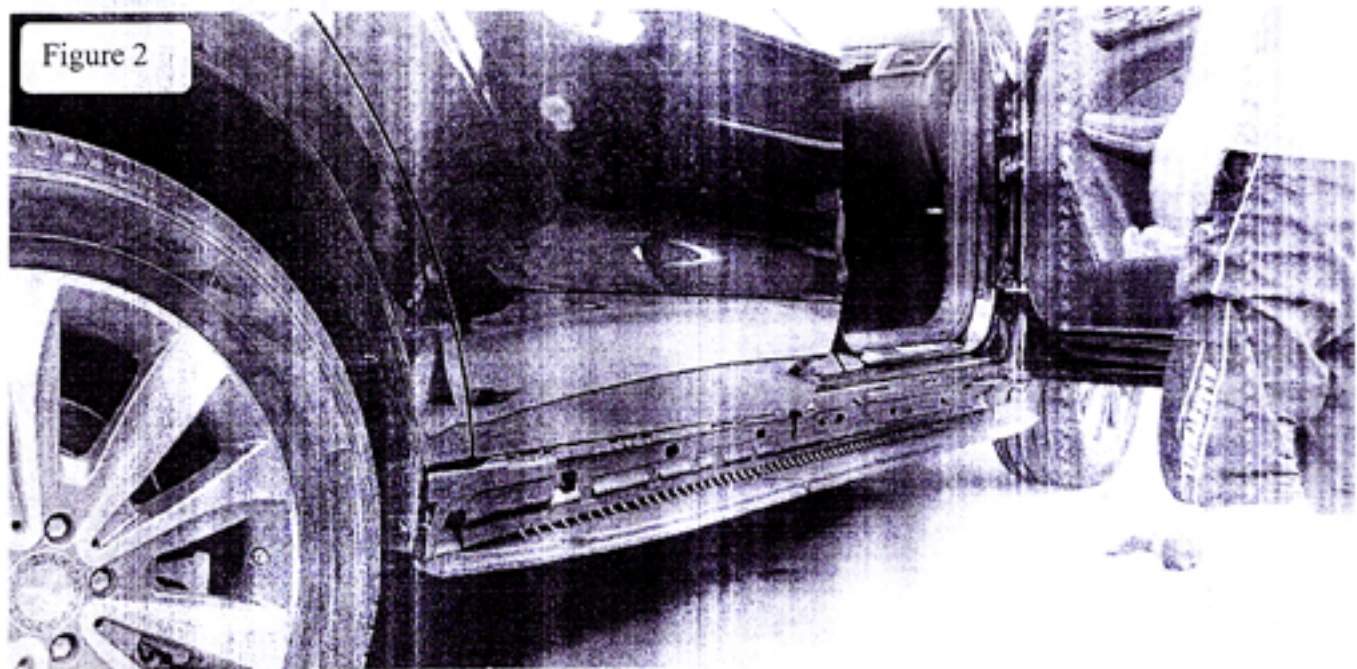


Figure 3

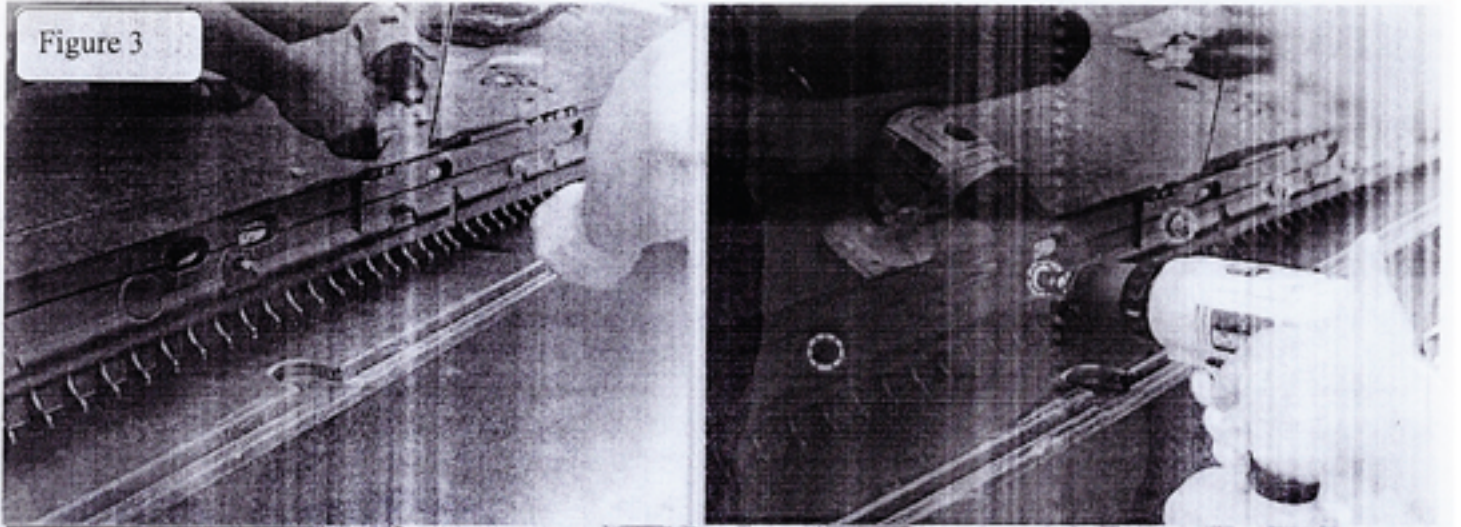
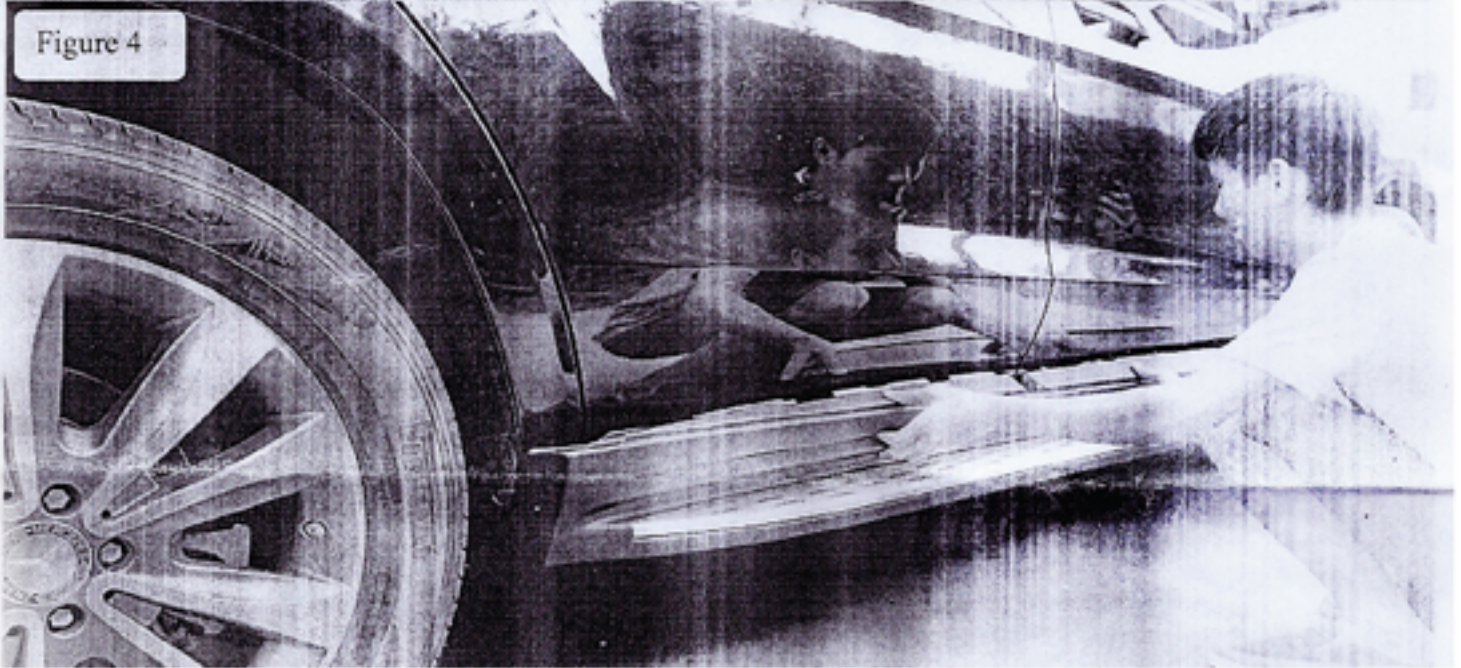


Figure 4





Fitting very well!

Disclaimer: Caused due to improper installation initiates or some related problem and losses, are beyond our company's quality assurance.

Choose reliable running boards offered on our website.