

INSTALLATION INSTRUCTIONS

Running Boards

2015-2016 Nissan Murano

PART # PR-RNIMU-15



**BLACK HORSE
OFF ROAD**

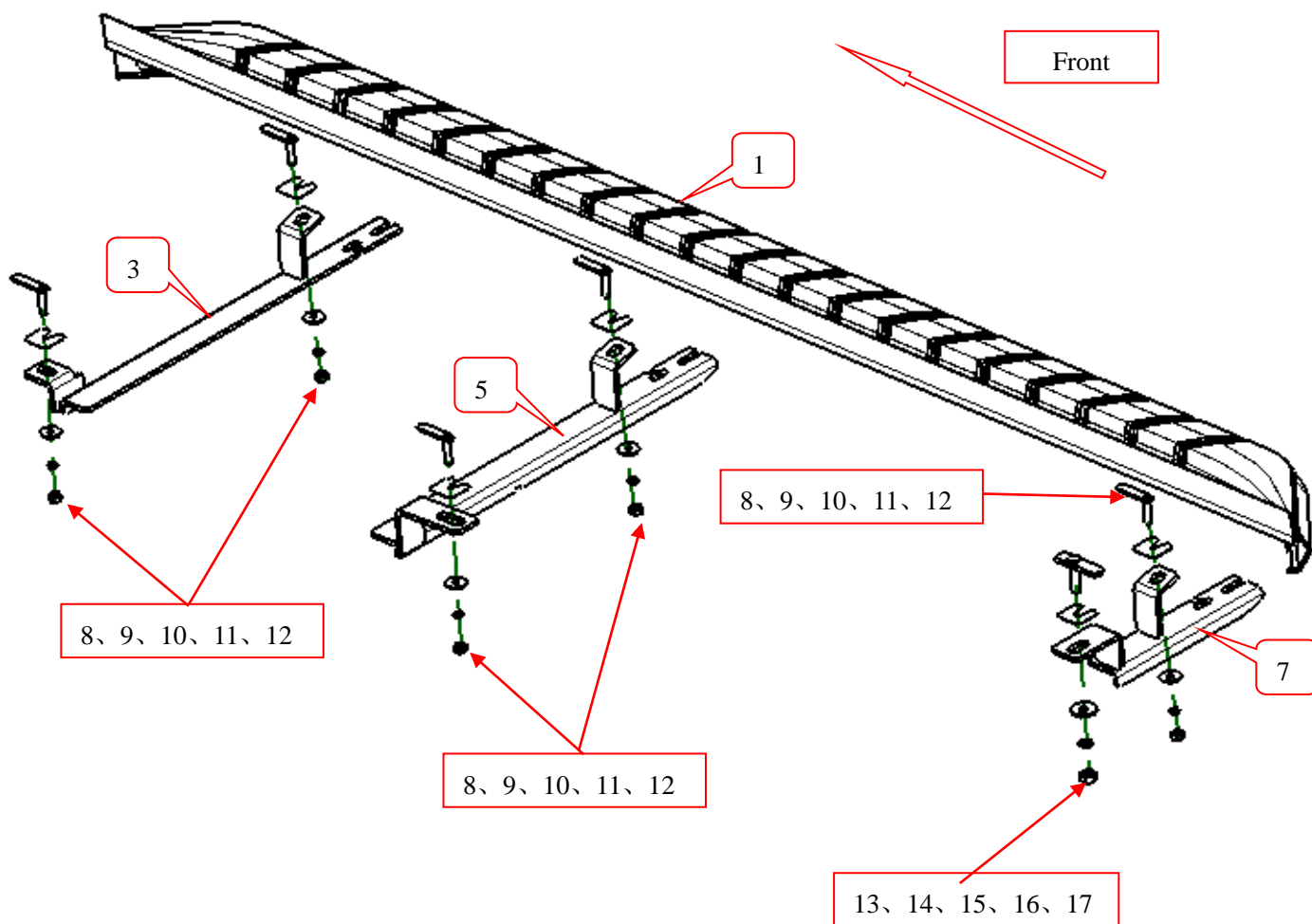
Attention:

- Please read this installation menu before installing this part. Protect your car properly in case there is any scratch might have.
- You may need to periodically to re-tighten all hardware for safety use after installation.
- Installation pictures are only for your reference, there might be some differences between pictures and real parts but no affect for your fitting.

PART LIST

NO.	NAME	QTY	REMARK	NO.	NAME	QTY	REMARK
1	F1 Running Board	2		10	Large Washer	15	$\phi 8 \times 25 \times 2.0$
2	Front Bracket(left)	1		11	Spring Washer	10	$\phi 8$
3	Front Bracket(right)	1		12	Hexagon Nut	10	M8
4	Middle Bracket(left)	1		13	T Bolt 2	2	M10*40
5	Middle Bracket(right)	1		14	Plastic Fixture	2	$\Phi 12$
6	Rear Bracket(left)	1		15	Large Washer	2	$\phi 10 \times 30 \times 2.5$
7	Rear Bracket(right)	1		16	Spring Washer	2	$\phi 10$
8	T Bolt 1	10	M8x35	17	Hexagon Nut	3	M10
9	Plastic Fixture	10	$\Phi 8$				

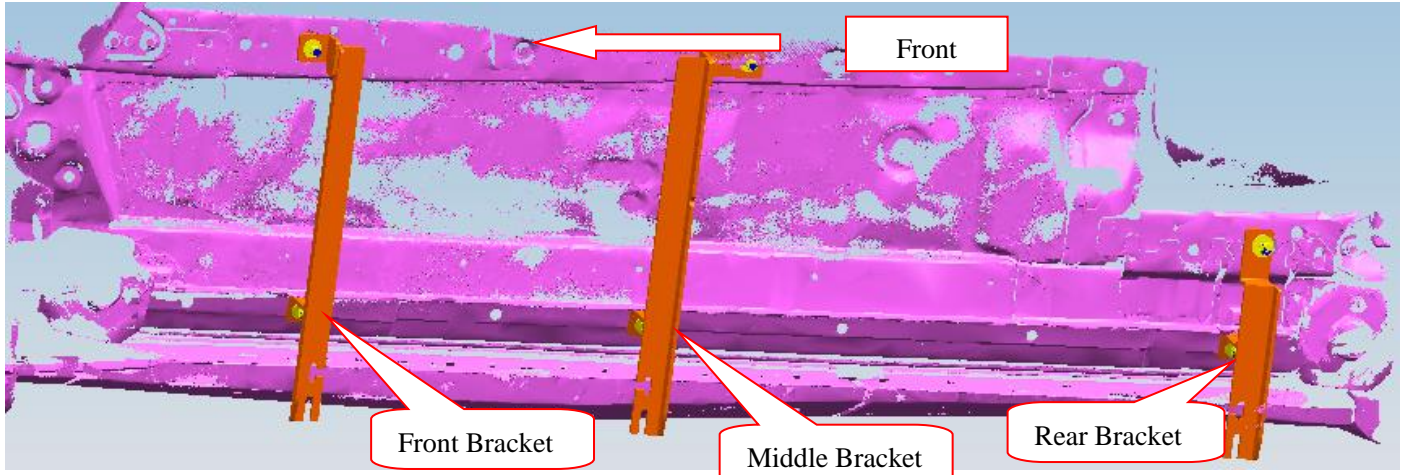
INSTALLATION PICTURE



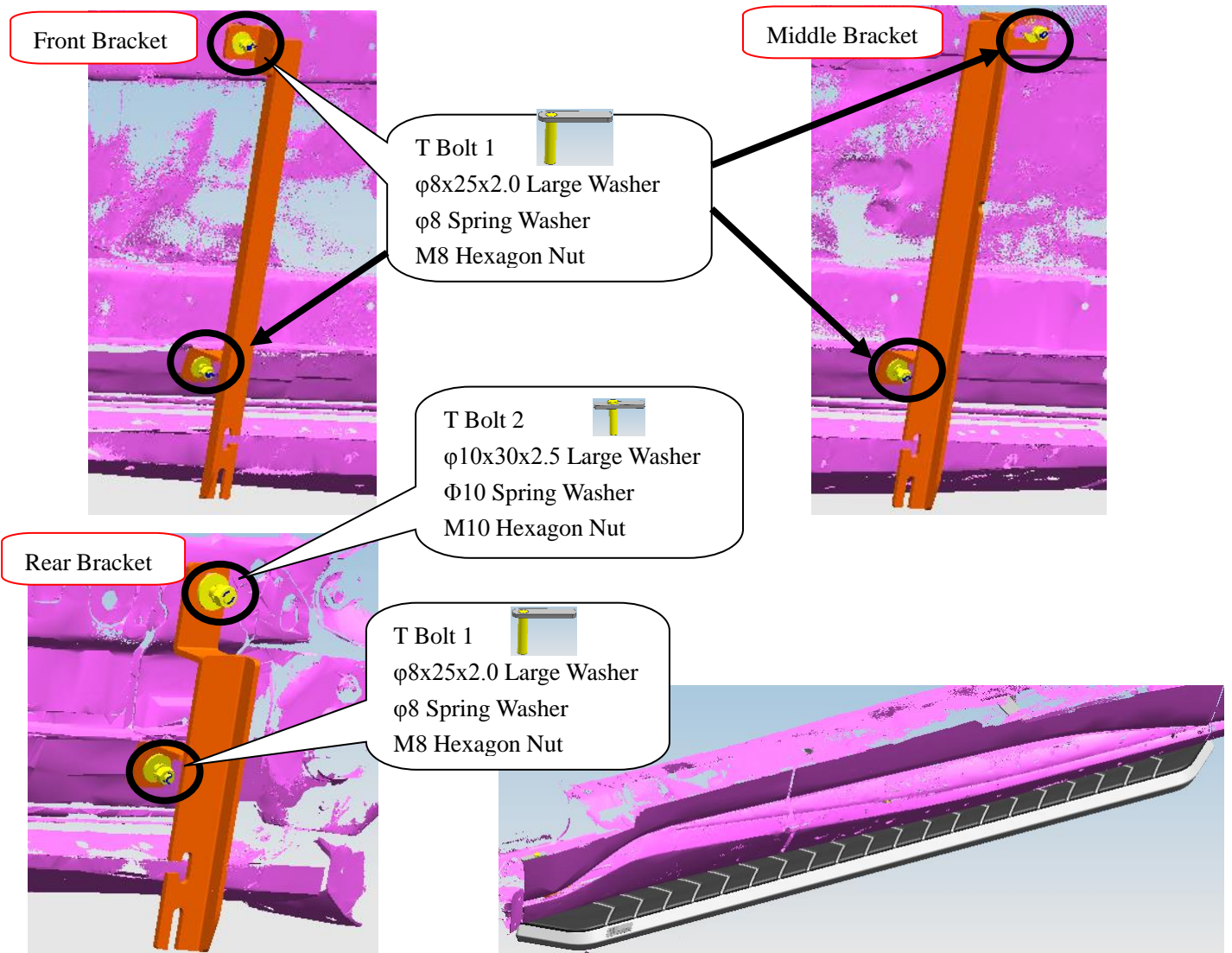
INSTALLATION PROCEDURES

Step 1: Refer to Part List and Installation Picture to check if all hard ware are included.

Step 2: Refer to the following picture to install front, middle and rear brackets.



Step 3: Install the running board on the brackets and then adjust them to the proper positions.



Step 4: Check if all hard ware are installed and then fasten all to complete the installation.

Disclaimer: Caused due to improper installation initiates some related problem and losses, are beyond our