



INSTALLATION INSTRUCTIONS

SIDE BAR FOR NISSAN FRONTIER KING CAB / SUZUKI EQUATOR
EXTRA CAB 05-12
PART # 9NIFRKA/9NIFRKSS

PARTS LIST:

1	Passenger/Right Side Bar	12	8-1.25mm x 30mm Hex Head Bolts
1	Driver/Left Side Bar	24	8X24mm O.D.X2mm Flat Washers
1	Front Passenger/Right Side Mounting Bracket	24	8mm Lock Washers
1	Rear Passenger/Right Side Mounting Bracket	12	8-1.25mm Nuts
1	Front Driver/Left Side Mounting Bracket		
1	Rear Driver/Left Side Mounting Bracket		

PROCEDURE:

1. **REMOVE CONTENTS FROM BOX. VERIFY ALL PARTS ARE PRESENT. READ INSTRUCTIONS CAREFULLY.**
2. On the passenger/right side, if equipped, remove the existing running board by removing the four nuts holding mount to inside of body. Install the two passenger/right side mounting brackets with the removed stock nuts, leave nuts loose for now. **NOTE:** Holes in brackets are off set, install with holes towards front of truck, passenger/right side shown. *See Fig. #1*
3. If not equipped with factory running boards – then use the four supplied 8mm nuts, washers & lock washers to install mounting brackets to truck.
4. Repeat procedures 2 & 3 for driver/left side.
5. Install side bar onto mounting brackets using four 8X25mm hex head bolts, four 8mm lock washers & four 8mm flat washers. Leave bolts loose – short end whole pattern installs towards the front of truck, passenger/right side shown.
6. Repeat procedure #5 on driver/left side.
7. Level and adjust side bars as desired and tighten.
8. Do periodic inspections to the installation to make sure that all hardware is secure and tight.

FIG. #1PASSENGER SIDE SHOWN

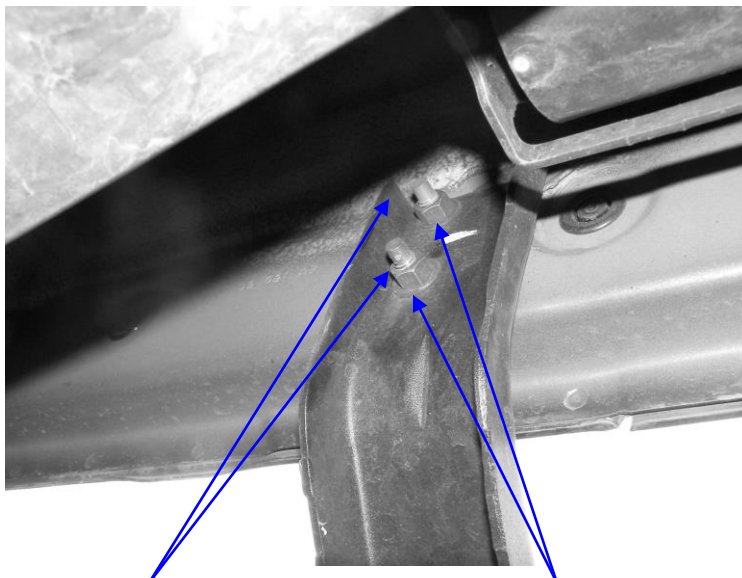
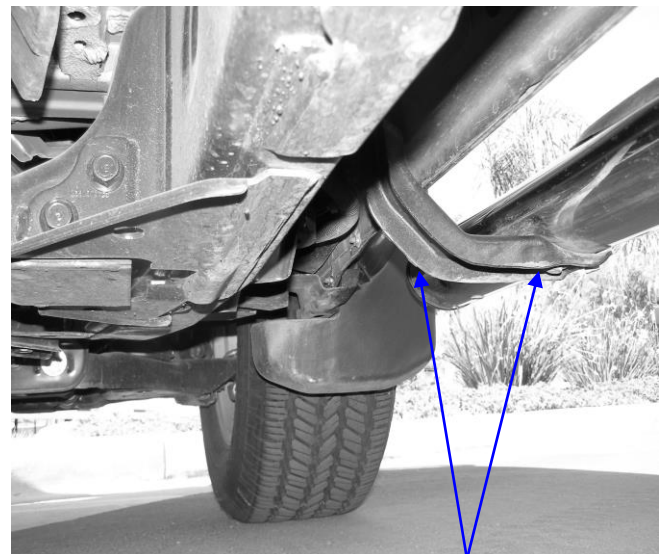


FIG. #2 PASSENGER SIDE SHOWN



EXISTING NUTS
NOTE: If vehicle is not equipped with factory Sidebars use the included 8mm Hex Nuts 8mm Lock Washers 8mm Flat Washers

OFF CENTER HOLES

SHORT END HOLE PATTERN