



INSTALLATION INSTRUCTIONS

PART # 9JPCSS

2014-2015 CHEROKEE 3" ROUND SIDE STEPS

INSTALLATION INSTRUCTION

ITEM NO.: 9JPCSS

DESCRIPTION: 14-15 Cherokee 3" Round Side Step SS

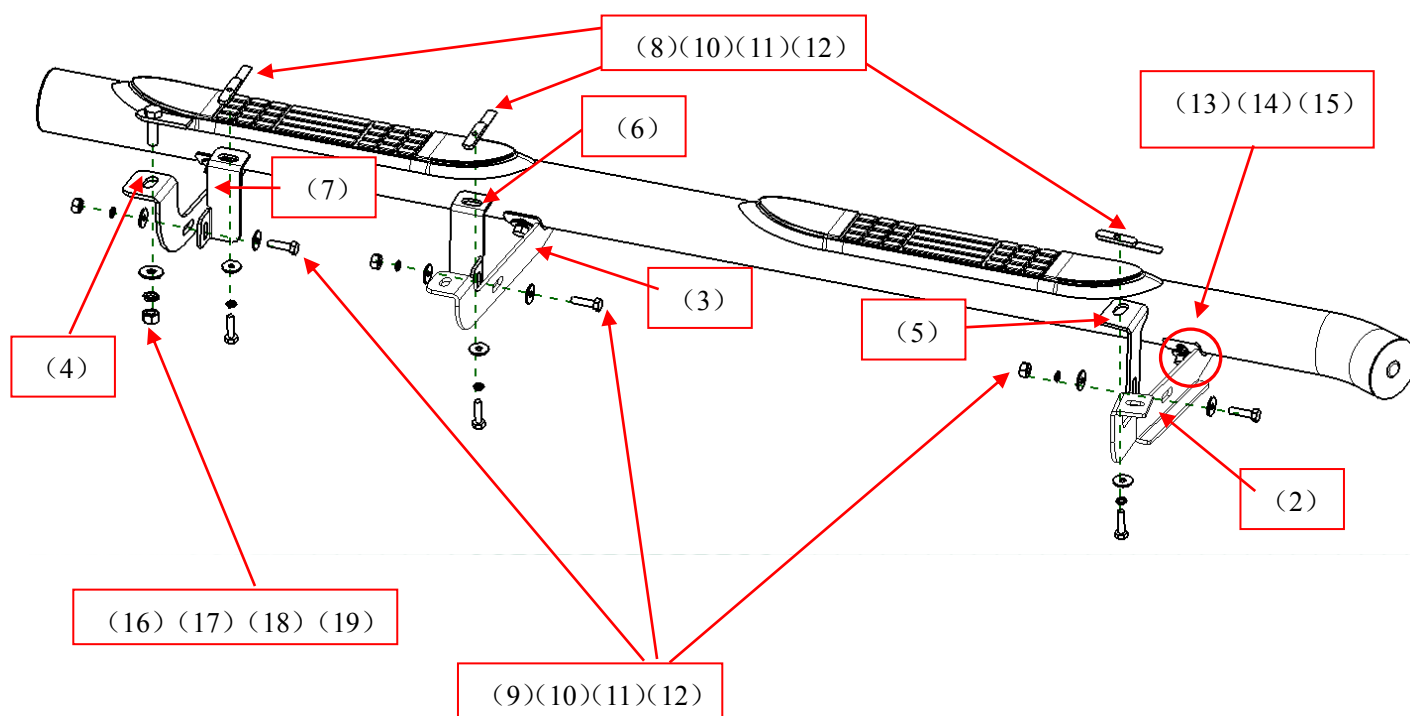
Attention:

- Please read this installation menu before installing this part. Protect your car properly in case there is any scratch might happen.
- You may need to periodically to re-tighten all hardware for safety use after installation.
- Installation pictures are only for your reference, there might be some differences between pictures and real parts but no affection for your fitting.

PART LIST

NO.	NAME	QTY	REMARK	NO.	NAME	QTY	REMARK
(1)	Side Bar	2		(11)	Spring Washer	12	φ8
(2)	Front Bracket	2		(12)	Hexagon Nut	6	M8
(3)	Mid Bracket	2		(13)	Hexagon Head Bolt	12	M10X30
(4)	Rear Bracket	2		(14)	Large Washer	12	φ10*30*2.5
(5)	Front Mounting Kit	2		(15)	Spring Washer	12	φ10
(6)	Mid Mounting Kit	2		(16)	T Bolt 6-3	2	67
(7)	Rear Mounting Kit	2		(17)	Large Washer	2	φ12*30*2.5
(8)	Bar Nut	6	50*12	(18)	Spring Washer	2	φ12
(9)	Hexagon Head Bolt	12	M8*30	(19)	Hexagon Nut	2	M12
(10)	Large Washer	18	φ8*25*2.0				

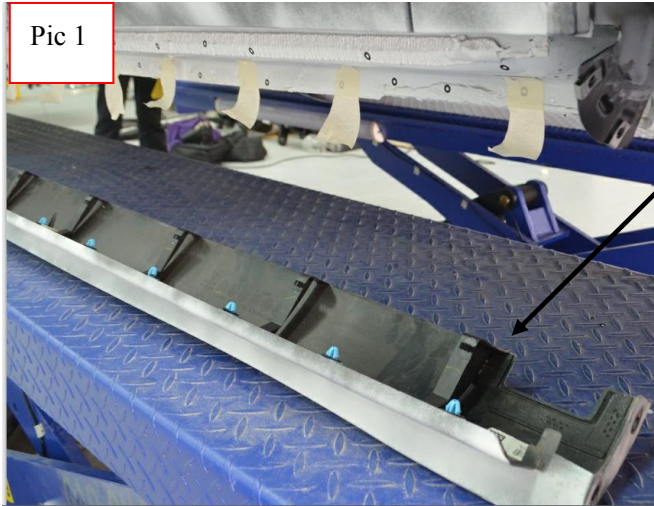
INSTALLATION PICTURES



INSTALLATION PROCEDURES

Step 1: Refer to the Part list to check if all the hardware are included.

Step 2: Distinguish the left and right according to the print **R** and **L**. It is easier for your installation by putting the bracket with its fastening pieces together.



Pic 1

Remove the side protection first.



Bottom installation

Front

Factory hardware

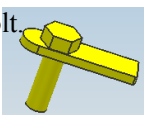
Pic 2

Rear Mounting Kit Installation Hole

Mid Mounting Kit Installation Hole

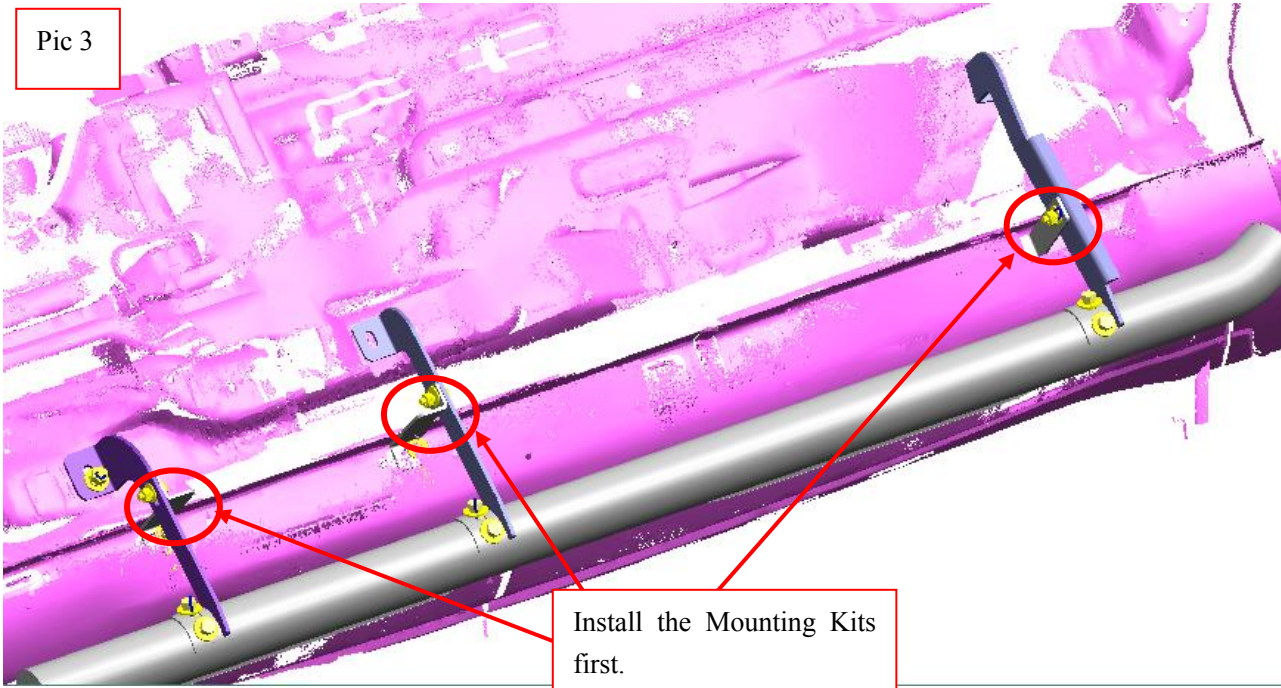
Front Mounting Kit Installation Hole

Here use the T bolt.
(16)



Step 3: Cut a square hole on the side protection so as to install the brackets.

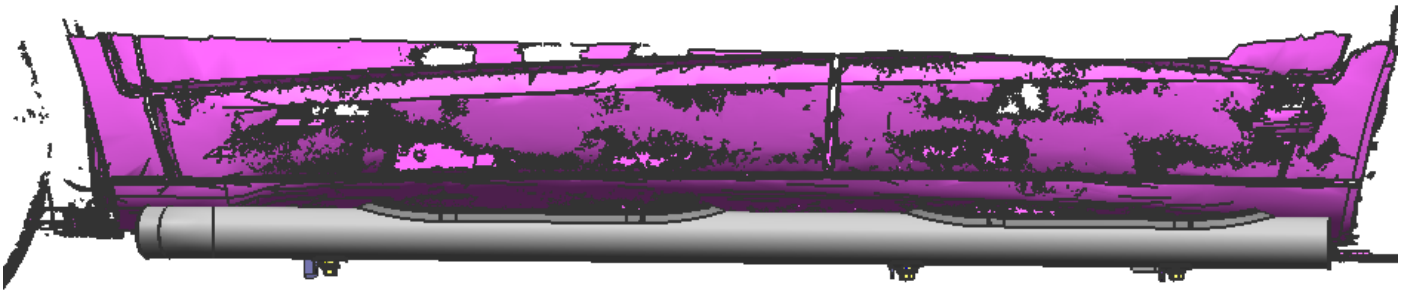
Pic 3



Step 4: Install the Mounting Kits first without fastening pieces, and then install the mounting brackets on the car. Next, install the side bar on the brackets and adjust the brackets.

Step 5: Check if all hard ware are installed and tighten up.

Step 6: Complete the installation.



Disclaimer: Caused due to improper installation initiates or some related problem and losses, are beyond our company's quality assurance.