



# **INSTALLATION INSTRUCTIONS**

**PART # BBJPCE-SP**

**2014-2015 JEEP CHEROKEE BULL BAR**

**WITH SKID PLATE**

# INSTALLATION INSTRUCTION

**ITEM NO.:** BBJPCE-SP

**DESCRIPTION:** 32.5" BULL BAR WITH SKID PLATE FOR CHEROKEE 2014-2015

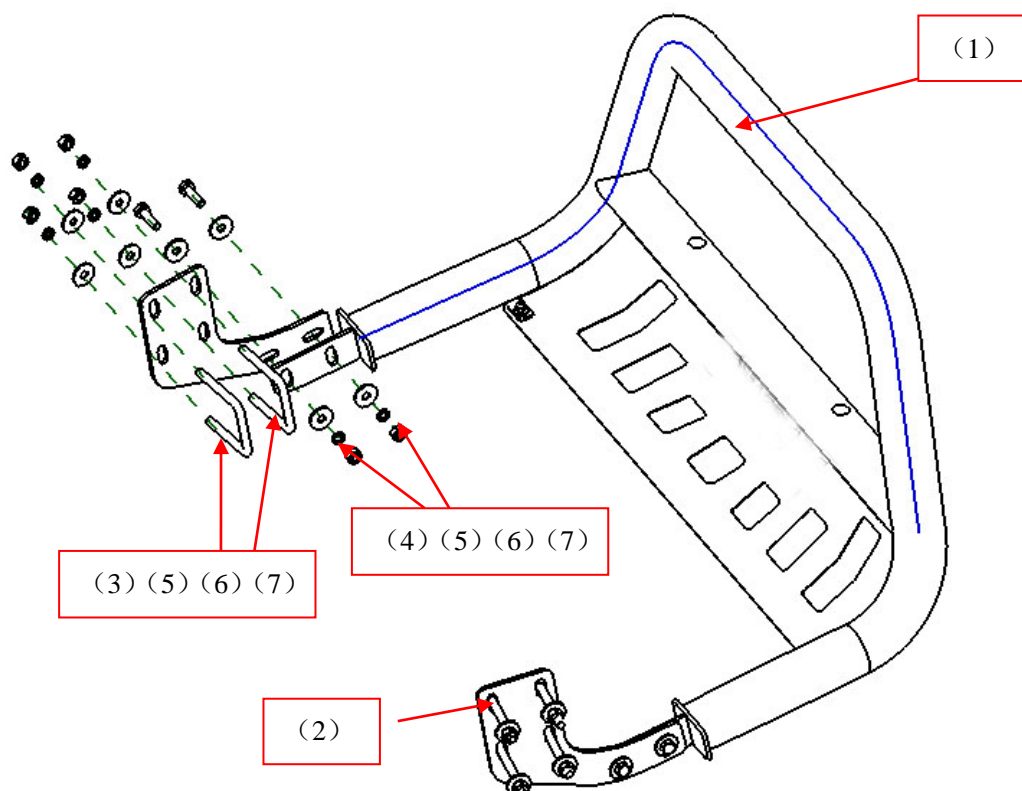
**Attention:**

- Please read this installation menu before installing this part. Protect your car properly in case there is any scratch might happen.
- During the installation you might remove some components from the car, please remember the position of the components so as to re-install them.
- You may need to periodically to re-tighten all hardware for safety use after installation.

**Part list:**

NO.	NAME	QTY	REMARK	NO.	NAME	QTY	REMARK
(1)	Bull Bar	1		(5)	Large Washer	16	φ10*30*2.5
(2)	Bracket	2		(6)	Spring Washer	12	φ10
(3)	U Bolt	4	245	(7)	Hexagon Nut	12	M10
(4)	Hexagon Head Bolt	4	M10*35				

## INSTALLATION PICTURES

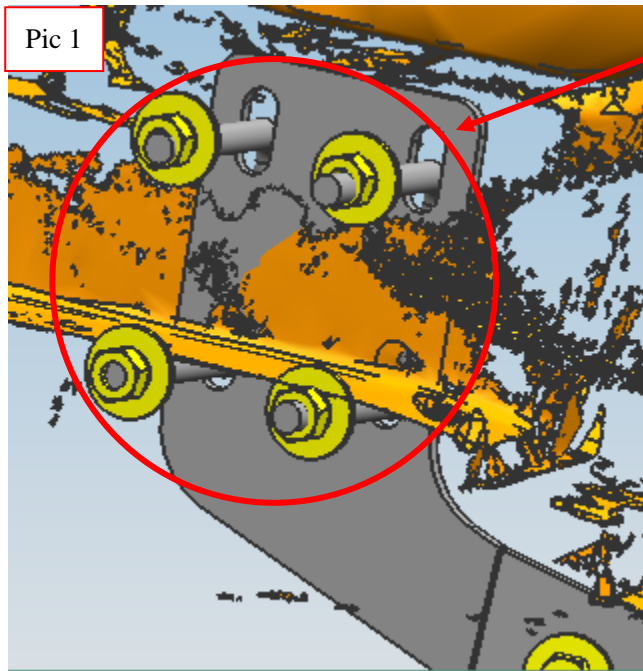


## INSTALLATION PROCEDURES

Step 1: Refer to the Part list to check if all the hardware are included.

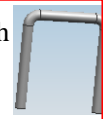
Step 2: Distinguish the left and right according to the print **R** and **L**. It is easier for your installation by

putting the bracket with its fastening pieces together.

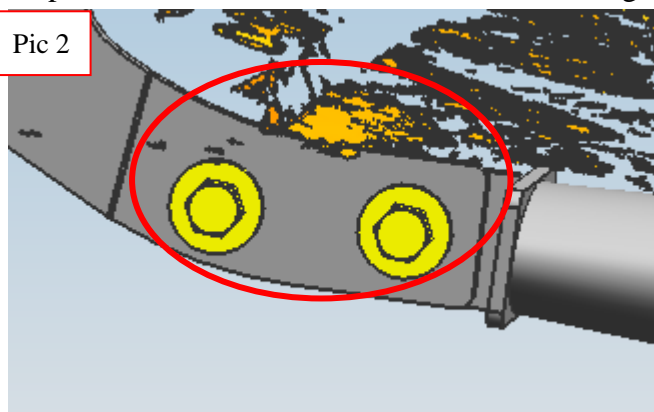


Pic 1

Install the brackets with U Bolt and relevant hardware.



Step 3: Install the side bar on the brackets and tighten up hardware after adjusting the brackets.



Pic 2

Step 4: Complete the installation.

**Disclaimer:** Caused due to improper installation initiates or some related problem and losses, are beyond our company's quality assurance.