



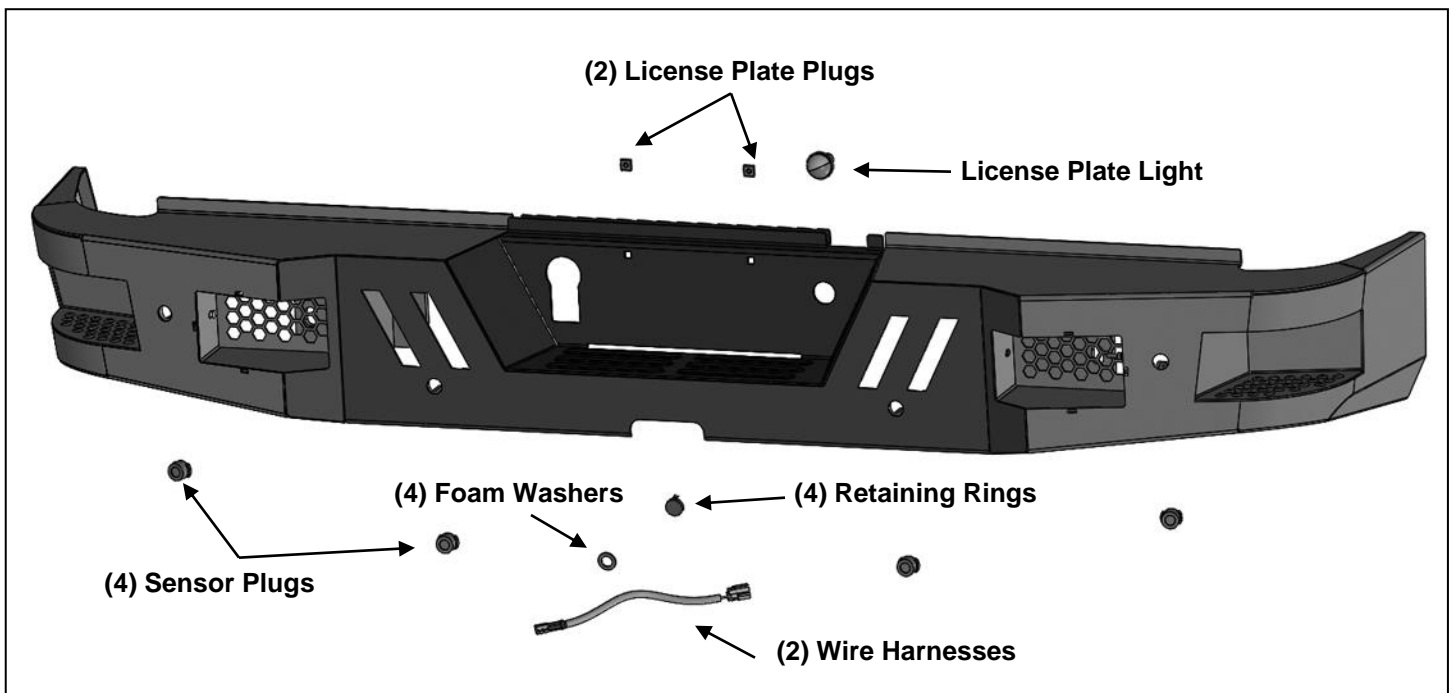
**BLACK HORSE  
OFF ROAD**

# **INSTALLATION INSTRUCTIONS**

**ARMOUR REAR BUMPER FOR  
10-18 DODGE RAM 2500/3500  
PART#ARB-RA25-10**

**PARTS LIST:**

1	Heavy Duty Rear Bumper Assembly	4	8mm x 28mm x 3mm Flat Washers
1	Push in License Plate Light	4	8mm Lock Washers
2	Plastic Plugs for license plate mount	8	4mm x 10mm Button Head Bolts
4	Sensor Hole Plugs	1	4mm Wrench
8	12-1.75mm x 50mm Hex Bolts	4	Retaining Rings
16	12mm x 37mm x 3mm Flat Washers	4	15.5mm x 25mm x 2mm Foam Washers
8	12mm Nylon Lock Nuts	2	Wire Harnesses
4	8mm x 40mm Hex Bolts	1	Sensor Cover Kit



**PROCEDURE:**

**REMOVE CONTENTS FROM BOX. VERIFY ALL PARTS ARE PRESENT. READ INSTRUCTIONS CAREFULLY BEFORE STARTING INSTALLATION. BUMPER IS HEAVY, ASSISTANCE IS HIGHLY RECOMMENDED TO AVOID POSSIBLE INJURY OR DAMAGE TO THE VEHICLE.**

1. Remove the license plate. On models with back up sensors, unplug the sensors and move the wiring harness away from the bumper, **(Figure 1)**. Next, remove the sensors from the plastic sleeves and remove the sleeves from the bumper, **(Figure 2)**.
2. Unplug the factory license plate lights. Next, unplug the wiring harness from the back of the trailer plug and remove the plug from the bumper, **(Figure 3)**. Move all wiring harnesses away from the bumper.
3. Place blocks or jack stands under the bumper to support it during bumper bolt removal. Once the bumper has been safely supported, remove the bumper bolts and slide the rear bumper off of the end of the frame, **(Figures 4—6)**. **WARNING!** Assistance is required to hold the bumper in place during hardware removal and to prevent the bumper from falling.
4. Sensors must be installed in Bumper, (if equipped), before installing Bumper Assembly.

**Models without bumper sensors:**

- a. Select the included (4) Rubber Plugs.
- b. From behind bumper, push plugs into sensor mounting holes.

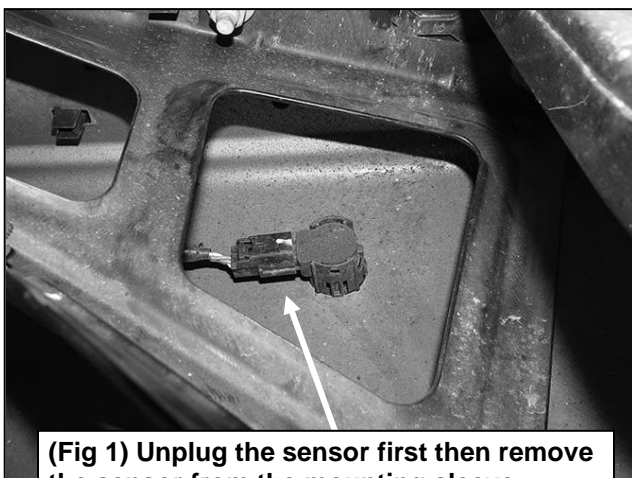
**Models with bumper mounted sensors:**

- a. Remove factory sealing washer from sensor. Attach Foam Washer onto the front of the sensor.
- b. Push the sensor in from the back of the Bumper until it is flush with the sensor sleeve. **NOTE:** Sensor tabs may need to be trimmed to fit sensor inside the sensor sleeve. Push (1) Retaining Ring into the sensor sleeve to secure the sensor in place, **(Figure 7)**.
- c. Repeat the previous steps for the remaining sensors.

**ARMOUR REAR BUMPER  
2010-18 RAM 25-3500**

- d. Starting on the driver side, run the OE sensor wire harness through the bumper cutouts. Connect the first two driver side sensors to the OE sensor wire harness.
  - e. Use the provided wire harness extensions to connect the remaining two passenger side sensors to the OE sensor wire harness.
5. With assistance, position the Bumper Assembly up and over the bumper brackets on the ends of the frame, **(Figures 6 & 7)**. Temporarily support the weight of the Bumper Assembly. **WARNING:** To avoid possible injury or damage to the vehicle, do not proceed until the Bumper is fully and safely supported.
  6. Line up the (2) outer holes in the passenger side frame mounting bracket with the (2) holes in the Mounting Plate. Attach the Bumper to the frame bracket with (2) 12mm Hex Bolts, (4) 12mm Flat Washers and (2) 12mm Nylon Lock Nuts, **(Figures 8 & 9)**. Leave hardware loose at this time. Repeat to attach the driver side of the Bumper to the frame bracket.
  7. Next, line up the (2) inner holes on the passenger side frame bracket to the mounting plate on the Bumper. Select the correct installation. **NOTE:** On some models/years, the frame bracket may only be equipped with outer mounting holes. Adjust installation accordingly, **(Figure 5)**.  
**Models with 8mm hex nuts welded onto the back of the frame bracket:**
    - a. Use (2) 8mm Hex Bolts, (2) 8mm Lock Washers and (2) 8mm Flat Washers to attach the passenger side of the Bumper to the frame bracket, **(Figures 4 & 8)**. Repeat this Step to attach the driver side of the Bumper to the frame bracket. Do not fully tighten hardware.**Models without 8mm welded hex nuts (open holes):**
    - b. Use (2) 12mm Hex Bolts, (4) 12mm Flat Washers and (2) 12mm Nylon Lock Nuts to attach the passenger side of the Bumper to the frame bracket, **(Figure 8)**. Repeat this Step to attach the driver side of the Bumper to the frame bracket. Leave hardware loose.
  8. Level and adjust the ARMOUR Bumper and fully tighten all hardware.
  9. Snap the plug for the trailer harness into the opening in the ARMOUR Bumper. If necessary, use a flat blade screwdriver to carefully pry the metal clips out to grab the edge of the openings in the Bumper. Reattach the wiring harness to the back of the plugs.
  10. Select the included (2) push-in plugs to attach the license plate to the Bumper, **(Figure 10)**.
  11. Select the included snap in Universal License Plate Light. Insert the Light into the mounting hole in the bumper, **(Figure 10)**. Connect the wire harness to the License Plate Light. Tie down all wiring harnesses and seal off any open wiring connection.
  12. Remove screens in light housings for more room around lights as needed, **(Figure 11)**.
  13. Use the included Wire Ties to secure the wiring harnesses to the bumper and frame.
  14. Do periodic inspections to the installation to make sure that all hardware is secure and tight.

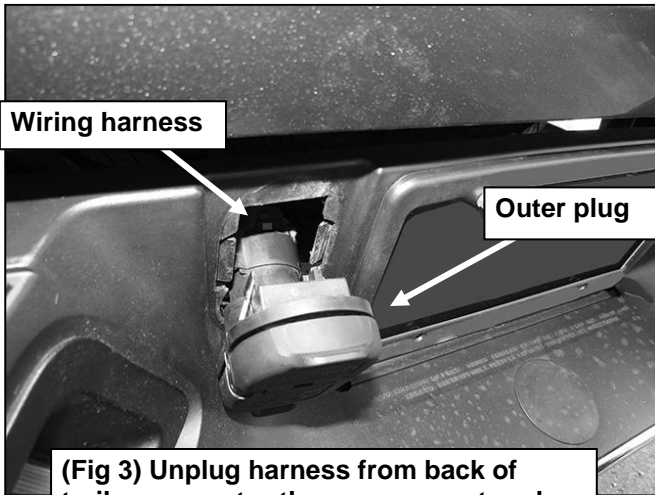
**To protect your investment**, wax this product after installing. Regular waxing is recommended to add a protective layer over the finish. Do not use any type of polish or wax that may contain abrasives that could damage the finish. Mild soap may be used to clean the Heavy Duty Bumper assembly.



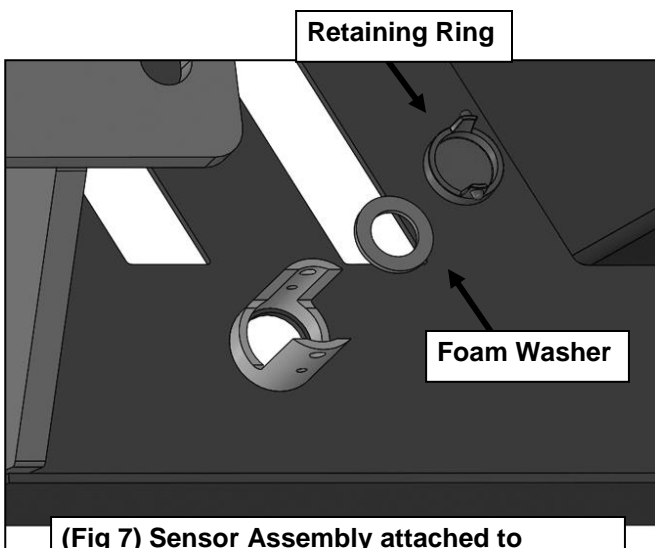
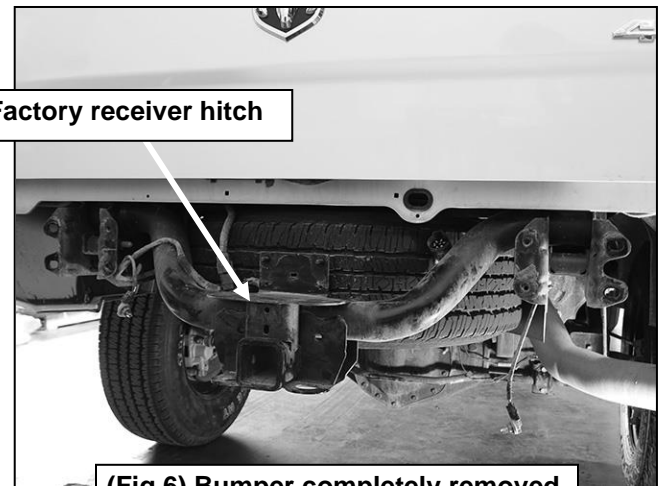
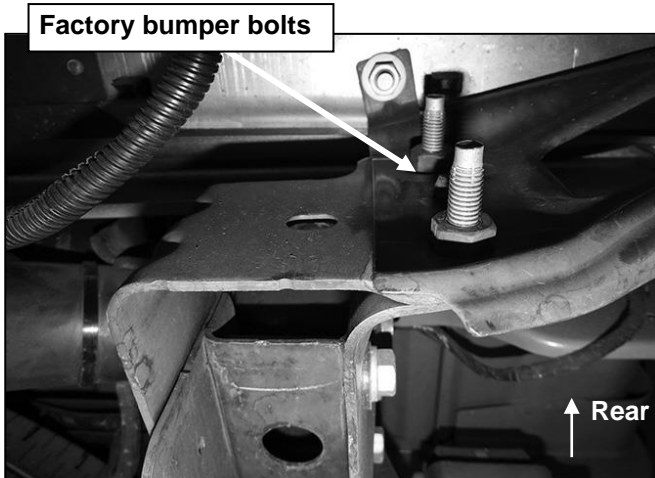
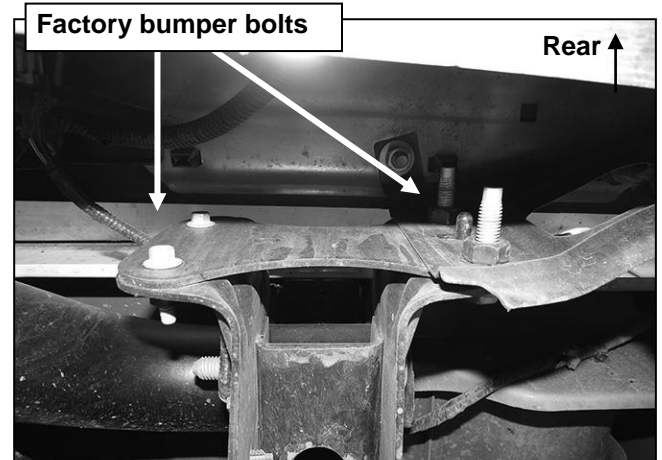
**(Fig 1) Unplug the sensor first then remove the sensor from the mounting sleeve**



**(Fig 2) Remove the mounting sleeve (right) from each sensor location in bumper**



**WARNING!** Do not remove bumper bolts unless the bumper is properly supported on blocks or stands or the bumper may fall.



**ARMOUR REAR BUMPER  
2010-18 RAM 25-3500**

- (2) 12mm Hex Bolts
- (4) 12mm Flat Washers
- (2) 12mm Nylon Lock Nuts

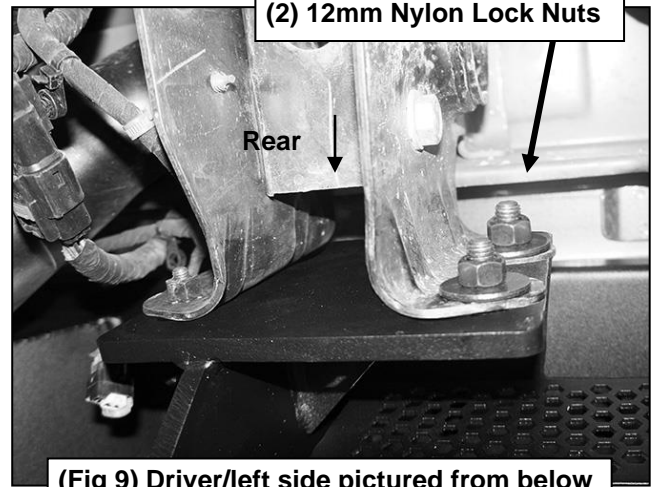
**WARNING!** Do not crawl under bumper unless the bumper is properly supported on blocks or stands or the bumper may fall.

- On inner side of bracket, use:
- (2) 12mm Hex Bolts
  - (4) 12mm Flat Washers
  - (2) 12mm Nylon Lock Nuts
- or
- (2) 8mm Hex Bolts
  - (2) 8mm Lock Washers
  - (2) 8mm Flat Washers

- (2) 12mm Hex Bolts
- (4) 12mm Flat Washers
- (2) 12mm Nylon Lock Nuts

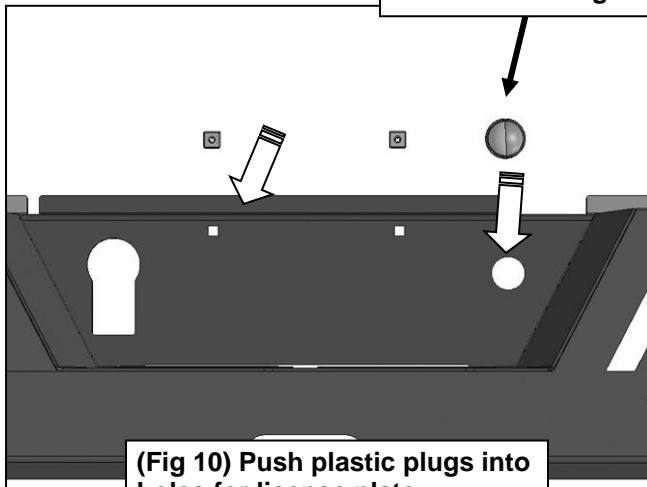
Rear

**Fig 8**



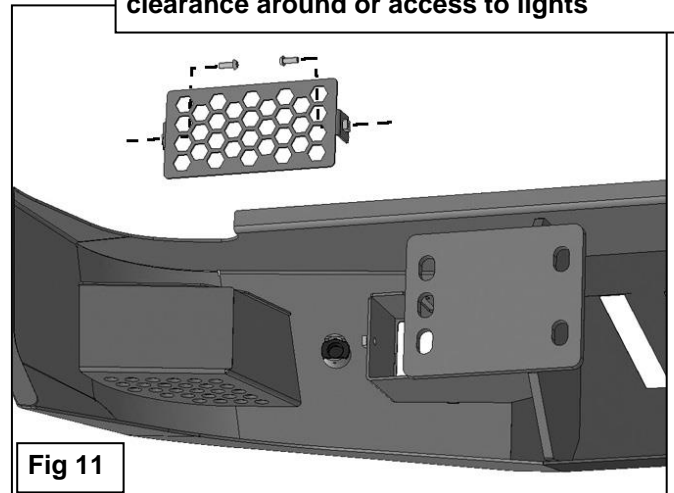
**(Fig 9) Driver/left side pictured from below**

License Plate Light



**(Fig 10) Push plastic plugs into holes for license plate**

Remove screens if necessary for additional clearance around or access to lights



**Fig 11**



**Complete Installation**