



INSTALLATION INSTRUCTIONS
TAILLIGHT GUARD FOR SILVERADO 1500LD/2500/3500HD 07-13
PART # 7GMSLSS / 7GMSLA

TAILLIGHT GUARD FOR SILVERADO 1500LD/2500/3500HD 07-13

PARTS LIST:

1	Drivers Side Tail Light Guard	1	Passenger Side Tail Light Guard
2	Support Brackets	2	4-0.7mmX12mm Screws
2	4mm Lock Washers	2	4mm Flat Washers

PROCEDURE:

- 1. REMOVE CONTENTS FROM BOX. VERIFY ALL PARTS ARE PRESENT. READ INSTRUCTIONS CAREFULLY.**
2. Open tail gate and remove the two drive's side black Phillips head screws that hold taillight assembly in place. (Fig 1) Set the two screws aside, as they will be reused in the guard and taillight assembly reinstallation.
3. Pull the taillight assembly out towards the rear, the same as if you were replacing a burnt out taillight bulb. Install furnished front mounting bracket onto the upper plastic snap-in fastener of taillight assembly, curved pocket to the rear. (Figs 2)
4. Position the taillight assembly snap-in fasteners back into position and push into place. Place the guard over the taillight and reinstall the two stock Phillips head screws through the guard through the bed and into the taillight assembly. Leave the screws loose for now. (Fig 3)
5. Install one of the furnished 4mm screws through the front bracket installed in step two and into the threaded insert in guard and tighten down. (Fig 4)
6. Repeat this procedure on the opposite side.

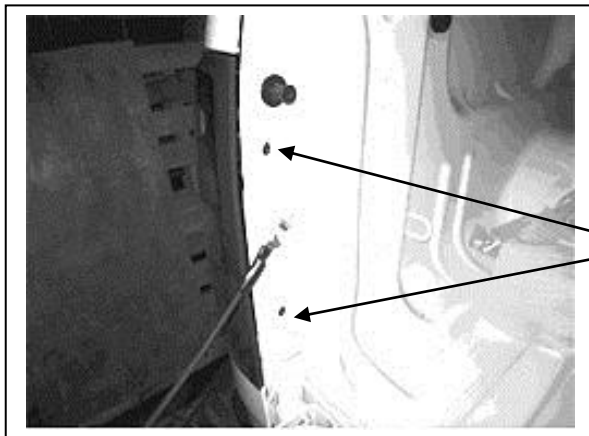
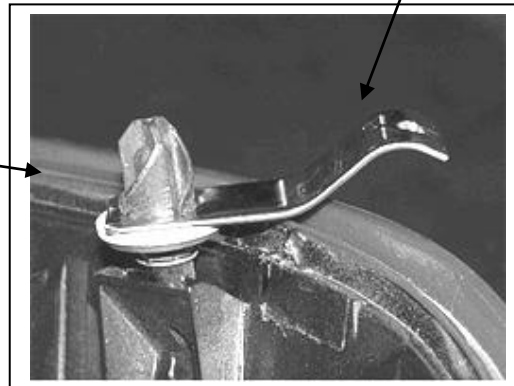


FIG. 1
DRIVER SIDE

PHILLIPS HEAD
SCREWS, REMOVE
AND SET ASIDE

CURVE FACES
REAR OF VEHICLE

FIG. 2
PLACE FRONT
BRACKET ONTO
UPPER PLASTIC
SNAP FASTENER



TAILLIGHT GUARD FOR SILVERADO 1500LD/2500/3500HD 07-13



FIG. 3
Stock taillight mounting screws reinstall through inside brackets.

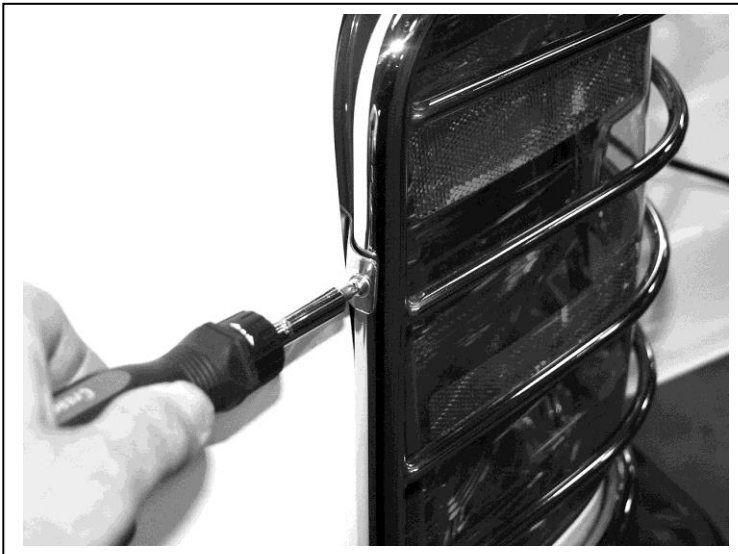


FIG. 4
4mm screw installs through front bracket into threaded insert in guard

Driver's side installed

