



**Before installation please observe
the following points:**

- Read all information in this manual carefully.
All suspension components are fitted and removed acc. to the manufacturer's specifications for installing and removal, if not otherwise required in these instructions.

- Check that your vehicle type is listed in the certificate as being specified for this kit.

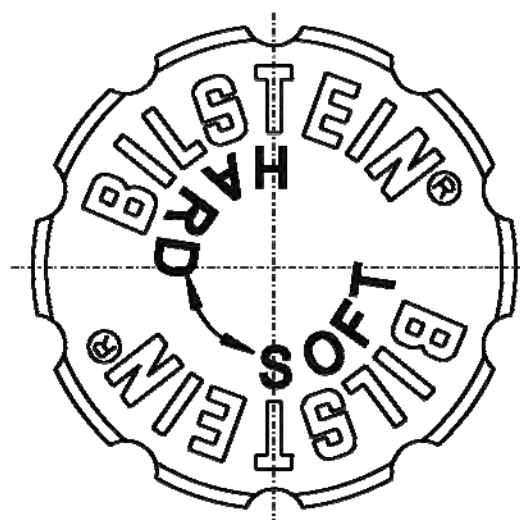
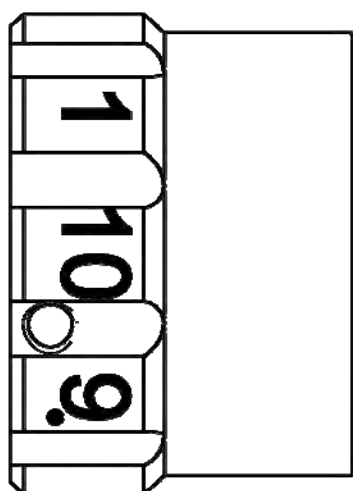
- Check the product for all components before starting installation!
- Check that dimensions and fastening points are comparable between the original and Bilstein shock absorbers.
- Directional references (left, right, front, rear) are always with reference to the driving direction.
Remove the negative battery pole.
- The test vehicles are left- hand drive vehicles.

**After installation please observe
the following points:**

- Set the vehicle height by adjusting spring plates and lock nuts on the new dampers. Only use the supplied spanner wrenches.

- All rubber- mounted strut/ damper attachments must not be fully tightened until AFTER the suspension system is loaded (wheels on the ground). Other mounting fasteners (for example brackets) must be securely tightened BEFORE load is placed on the suspension system.
Because the vehicle has been lowered, ground clearance for all wheel-/ tire- combinations must be checked.
Connect the negative battery pole.
- After installing the suspension system, caster and camber must be checked and adjusted according to manufacturer's specifications.
Check and reset load- dependent brake compensator and ABS system according to manufacturer's specifications.
- Check and adjust headlight setting.

All diagrams are generalized
and not to scale!
brackets, etc. specific to
strut are not shown!



position **1** = **comfort**

position **10** = **sport**

During the adjustment you will hear a definite „click“ at each position of the adjustment.

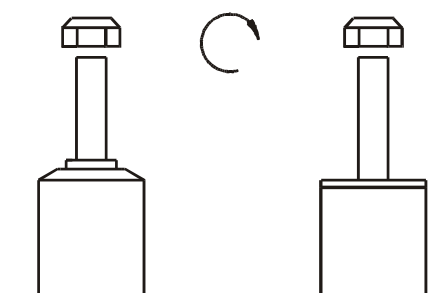
Instruction for the front axle

The adjusting element of the front struts is located at the bottom end of the strut.

Adjusting position must aligned with the red mark on outer tube.

Status of delivery is position **1**.

-						list of torques
	M 8	M 10	M 12	M 14	M 16	Thread
	13	25	45	72	110	Torque Nm
	10	19	34	54	83	Torque ft lb



Do not use an impact tool to loosen or tighten fasteners due to possible damage to the product.
Self- locking nuts must only be used once!

Removal strut

Place vehicle on a wheel- free car hoist, lift it and remove wheels.

Vehicles equipped with xenon headlight the sensor for the headlamp levelling controller must removed before.



The lower control arm must be supported by suitable means!

Remove bottom mounting.

Remove top fixing nuts from support bearing.

Do not remove central nut at this time!

Remove complete strut and clamp it in an appropriate strut vice.

Using a suitable spring compressor, compress suspension spring until tension on support bearing is free to move.

Release central nut and remove original mounting parts and coil spring. Please refer to diagram to identify which parts will be replaced with BILSTEIN- supplied components.

Installing strut

Assemble BILSTEIN and/ or original mounting parts, as well as the new BILSTEIN spring on the BILSTEIN strut in reverse order as removal.



IMPORTANT! Spring plates must not be adjusted outside the ranges specified in the certificat!

The correct mounting position of the suspension springs can be determined by the printing on the springs; install them with the print upright.

Fit assembled BILSTEIN strut to the vehicle in reverse order as removal.

The cable for the electronic force adjustment must fixed with small cable clips (10x) along the ABS-cable to connect with original plug adapter.

Removal shock absorber

Place vehicle on a wheel- free car hoist, lift it and remove wheels.



When the vehicle is equipped with Bose- Sound- System the soundboard must be removed for reaching the adjustment of B16.

The lower control arm must be supported by suitable means!

Remove bottom mounting.

Remove top fixing nuts from support bearing.

Do not remove central nut at this time!

Remove complete shock absorber and clamp it in an appropriate strut vice.

Compress suspension spring until tension on support bearing is free to move.

Release central nut and remove original mounting parts and coil spring. Please refer to diagram to identify which parts will be replaced with BILSTEIN- supplied components.

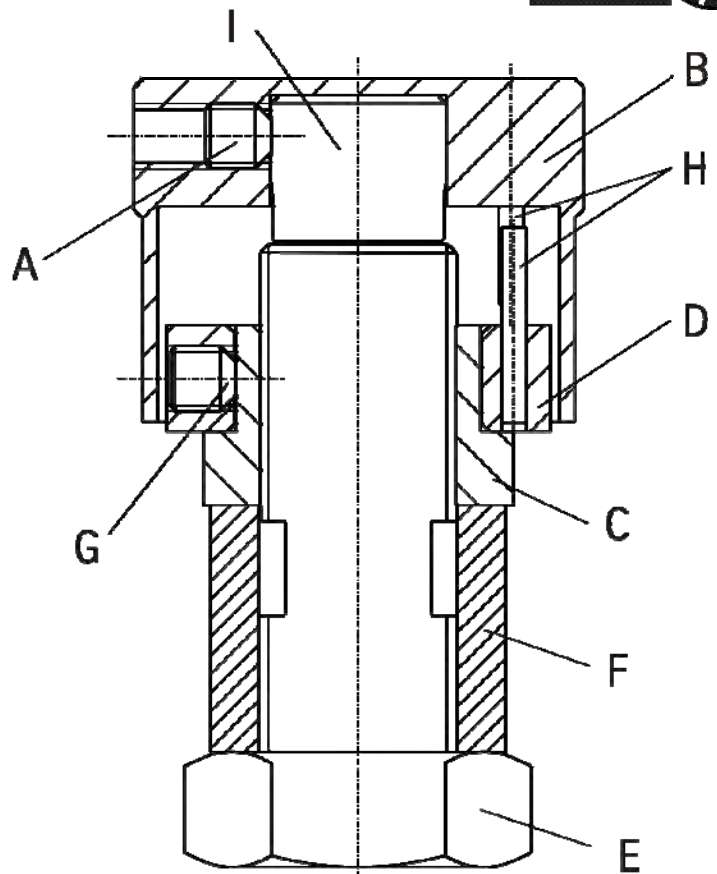
Original rubber spring pad at rear axle must be replaced by Bilstein part.

PSS10- 10 step- pin adjustment

The adjustment unit must be deinstall before the shock absorber installation can be completed in reverse order with BILSTEIN and/ or original mounting parts.

- A- Set screw
- B- head
- C- lock nut M12x 1
- D- End stop disc
- E- Nut M12x1

- F- sleeve
- G Set screw
- H stop pin
- I Adjusting screw



position **1** = **comfort** (CCW direction)
 position **10** = **sport** (CW direction)

Instruction for the rear axle
 Status of delivery is position **10**.



Removal Adjustment Unit PSS10

To remove the adjusting head (B)
the set screw must loose.

Remove the lock nut (C) together
with end stop disc (D).

Now remove all original mounting parts and
fit Bilstein and/ or original mounting parts in
reverse order as removal (see fig. on page
20)

Installing Adjustment Unit PSS10

Tighten (E) to block and fit lock nut (C)
together with end stop disc (D).

Getting an optimal installing position for the
adjustment unit you can also loose the set
screw (G) and turn the end stop disc (D) in
a position to a saliently mark at the chassis
you have selected before. Fix the set screw
again. Pins (H) are end stops.

Place the adjusting knob (A) flat on the adjust-
ing screw (I) and turn it clockwise to end stop.

Fix the adjusting head (B) with set screw (A).

The adjusting head should move easily and
with definite “clicks” at each adjustment posi-
tion. If not, disassemble the adjustment unit
and reassemble acc. to the instruction.

Installing shock absorber

Assemble BILSTEIN and/ or original mounting
parts on BILSTEIN shock absorber in reverse
order as removal.



***IMPORTANT! Spring plates must
not be adjusted outside the
ranges specified in the certificate!***

Fit assembled shock absorber to the
vehicle in reverse order as removal.

B= BILSTEIN Lieferumfang
Delivered by BILSTEIN

OE= Original Anbauteile
Original Equipment

