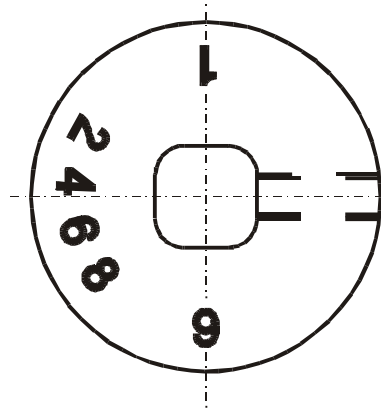


**instructions for force adjustment**



position **9** = **soft** (clockwise direction)  
 position **1** = **firm** (counter-clockwise direction)

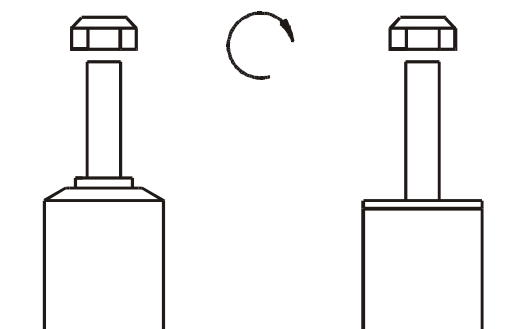
During the adjustment you will hear a positive „click“ at each position of the adjustment.

**Instruction for the front axle**

The adjusting element of the front struts is located at the bottom edge of the strut, covered by a blue plastic cap. That cap must be removed before adjusting. After the adjustment the cap must be replaced again.

**- list of torques**

	M8	M 10	M 12	M 14	M 16	Thread
	13	25	45	72	110	Torque Nm
	10	19	34	54	83	Torque ft lb



**DO NOT USE IMPACT TOOLS FOR LOOSENING OR TIGHTENING FASTENERS, BECAUSE THIS MAY DESTROY THE THREADS. SELF- LOCKING NUTS MUST ONLY BE USED ONCE!**



**After installation please observe  
the following points:**

After installing the suspension system, caster and camber must be checked and adjusted according to manufacturer's specifications. Check and reset load- dependent brake compensator and ABS system according to manufacturer's specifications.

Check and adjust headlight aim.

Because the vehicle has been lowered, freedom of movement for all wheel- / tire- combinations must be checked.

All rubber- mounted strut/ damper attachments must not be fully tightened until AFTER the suspension system is loaded (wheels on the ground). Other mounting fasteners (for example brackets) must be securely tight-ened BEFORE load is placed on the suspension system.

**ALL DIAGRAMS ARE GENERALIZED  
AND NOT TO SCALE!  
BRACKETS, ETC. SPECIFIC TO  
STRUT ARE NOT SHOWN!**

### Removal

Place vehicle on a chassis hoist,  
lift it and remove wheels.



***The lower control arm must be supported by suitable means!***

Remove bottom mount.

Remove top fixing nuts from support bearing.  
Do not remove center nut at this time!

Remove complete strut and  
clamp it in an appropriate strut vise.

Using a suitable spring compressor, compress  
suspension spring until tension on support  
bearing is released.

Release center nut and remove original  
mounting parts and coil spring. Please refer  
to diagram to identify which parts will be  
replaced with BILSTEIN- supplied components.

### Install

Assemble BILSTEIN and/ or original mounting  
parts, as well as the new BILSTEIN spring on the  
BILSTEIN strut in reverse sequence of removal.



***IMPORTANT! Spring plates must not be adjusted outside the ranges specified below!***

The correct mounting position of the suspension  
springs can be determined by the printing on  
the springs; install them with the print upright.

Do not reuse original- bumper, since  
BILSTEIN- strut has built in bump stop.

Fit assembled BILSTEIN strut to the  
vehicle in reverse sequence of removal.

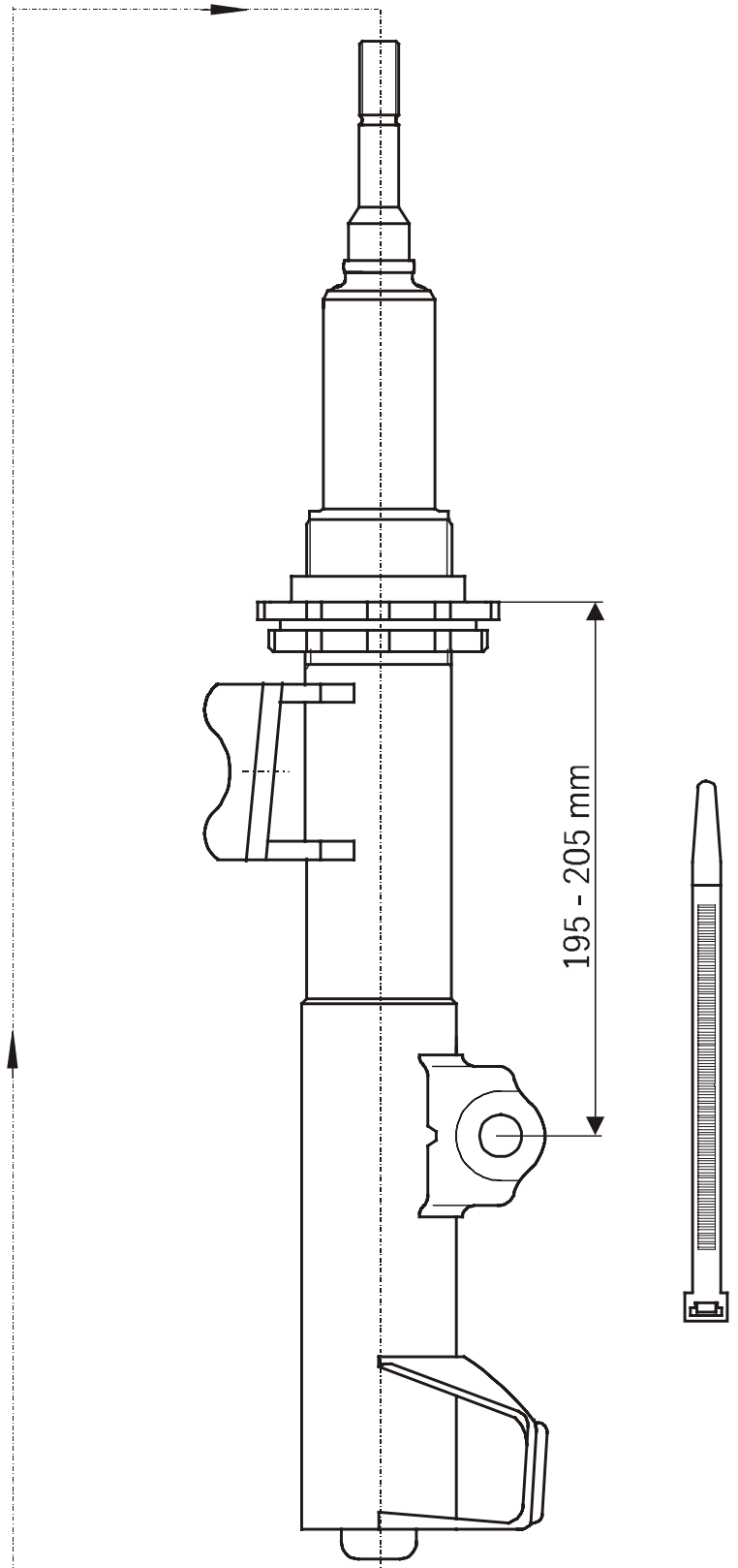
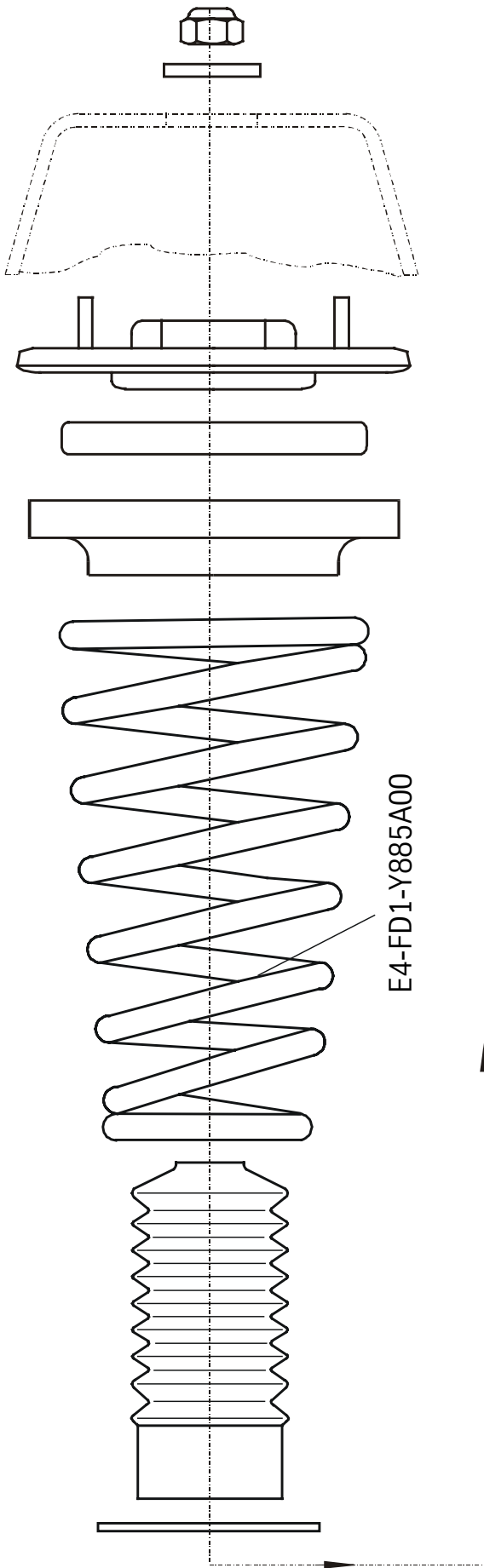
The adjustment range of the spring plates is only approved within the range of the values given in Point 1. Adjustment must be carried out so that the body is level when the vehicle is empty apart from the driver. The lowest approved adjustment and the permissible adjustment range are to be entered, stating the fixed axle reference points. (Example, see below).

<b>Manufacturer</b>	<b>Daimler Chrysler</b>
<b>ABE-/ EG- BE- No.</b>	<b>e1*2001/116*0262*..</b>
<b>type designation</b>	<b>SLK 171 (W171)</b>
<b>model</b>	<b>171</b>

<b>FRONT</b>	<b>according to permissible axle load and adjusting dimensions</b>
<b>spring part number</b>	main spring <b>E4-FD1-Y885A00</b>
<b>shock absorber part number</b>	with damping force adjustment <b>VM3-B609</b> Without damping force adjustment <b>VE3-B612</b>
<b>permissible adjustment range</b>	<b>maximum permissible axle load 910 kg ( 2178 lb)</b> <b>195 – 205 mm* = 10 mm range</b>
* measurement: top edge of spring seat down to the center of mounting screw	

<b>REAR</b>	<b>according to permissible axle load and adjusting dimensions</b>
<b>spring part number</b>	main spring <b>E4-FD1-Y656A00</b>
<b>shock absorber part number</b>	with damping force adjustment <b>BM5-B610</b> Without damping force adjustment <b>BE3-B613</b>
<b>permissible adjustment range</b>	<b>maximum permissible axle load 940 kg ( 2068 lb)</b> <b>35 - 50 mm* = 15 mm range</b>
* measurement: bottom edge of spring seat up to bottom of original spring seat	

- There are no technical objections against the use of all O.E. wheel/tyre combinations.
- There is also no technical reason to object to the use of special wheel/tyre combinations, provided the following conditions are met:
  - Special TÜV assessments or approvals have been obtained for the relevant wheel/tyre combination and the necessary conditions are met.
  - If the series bump travel limitation has to be modified as a result of conditions laid down in these test reports (e.g. change of O.E. bump stops or installation of additional bump travel limiters), the characteristic line of the axle suspension has to be verified and assessed new (assessment acc. to §21 StVZO).
- The ground clearance in unladen state is reduced by the installation of special springs. It is the approximate equivalent of that of a partially laden series vehicle. When the vehicle is loaded to the admissible axle loads the ground clearance does not change as compared to the series vehicle. If spoilers, rear aprons and special exhaust systems are mounted, however, the reduced angle of slope must be noted (travelling on ramps etc.).
- The specified minimum height of the coupling ball above the road surface with the permissible total weight of the vehicle (acc. DIN 74058) is 350 mm.





## Mounting instruction rear axle

### Remove

Place vehicle on a chassis hoist,  
lift it and remove wheels.



***The lower control arm must be supported by suitable means!***

Remove top and bottom fixing mount.

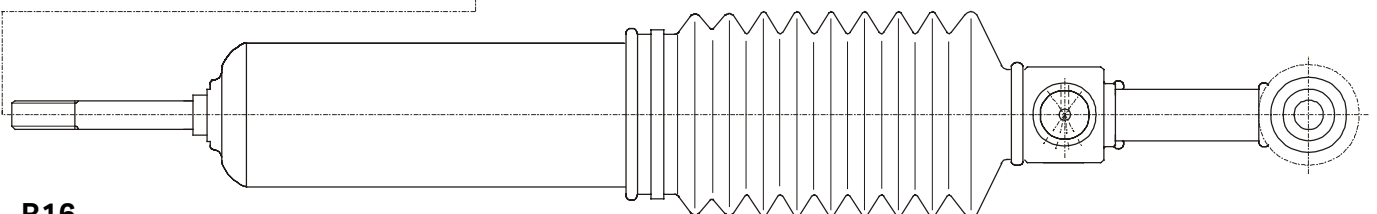
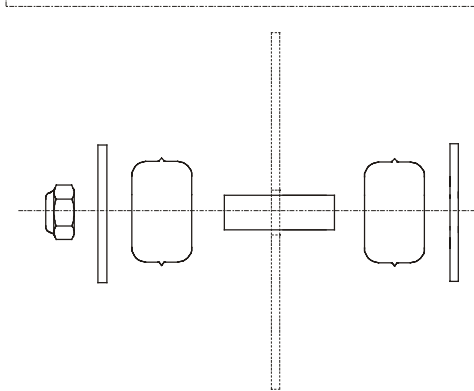
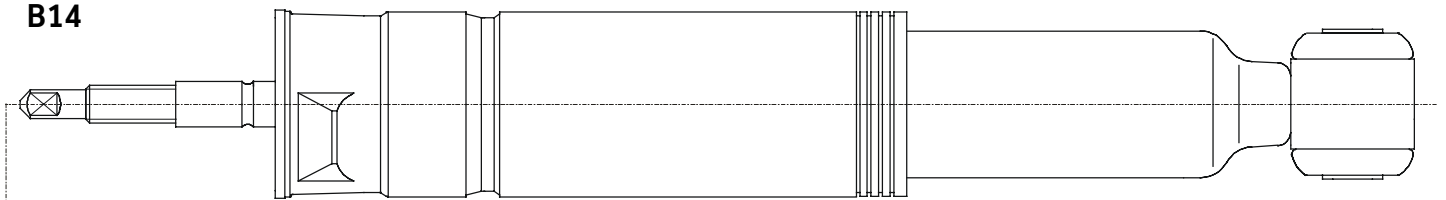
Remove original shock absorber.

### Install

Fit BILSTEIN mounting parts on BILSTEIN shock absorber according to the sketch below.

Fit BILSTEIN shock absorber to the vehicle in reverse sequence of removal.

**B14**



Original- Federunterlage durch  
BILSTEIN- Unterlage ersetzen/  
Replace original spring pad  
by Bilstein part.

